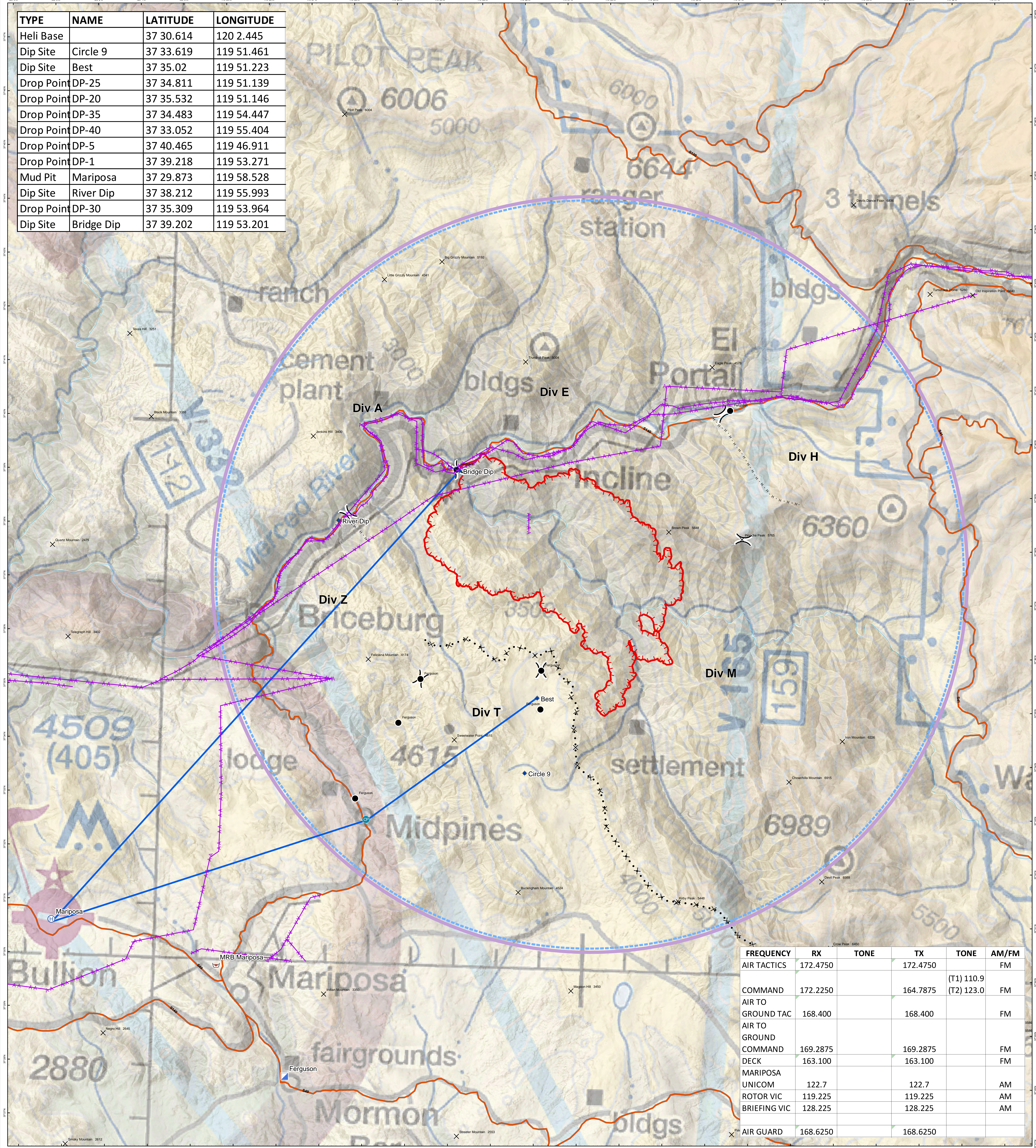


TYPE	NAME	LATITUDE	LONGITUDE
Heli Base		37 30.614	120 2.445
Dip Site	Circle 9	37 33.619	119 51.461
Dip Site	Best	37 35.02	119 51.223
Drop Point	DP-25	37 34.811	119 51.139
Drop Point	DP-20	37 35.532	119 51.146
Drop Point	DP-35	37 34.483	119 54.447
Drop Point	DP-40	37 33.052	119 55.404
Drop Point	DP-5	37 40.465	119 46.911
Drop Point	DP-1	37 39.218	119 53.271
Mud Pit	Mariposa	37 29.873	119 58.528
Dip Site	River Dip	37 38.212	119 55.993
Drop Point	DP-30	37 35.309	119 53.964
Dip Site	Bridge Dip	37 39.202	119 53.201



FREQUENCY	RX	TX	AM/FM
AIR TACTICS	172.4750	172.4750	FM
COMMAND	172.2250	164.7875	(T1) 110.9 (T2) 123.0 FM
AIR TO GROUND TAC	168.400	168.400	FM
AIR TO GROUND COMMAND	169.2875	169.2875	FM
DECK	163.100	163.100	FM
MARIPOSA UNICOM	122.7	122.7	AM
ROTOR VIC	119.225	119.225	AM
BRIEFING VIC	128.225	128.225	AM
AIR GUARD	168.6250	168.6250	

Division Break
 Uncontrolled Fire Edge
 Aviation Obstacle
 Streams
 CheckPoint
 Summit
 FlightRoute
 Highway
 TFR

Ferguson Fire
CA-SNF-000745
Pilot Map
7/16/2018

1:40,000

Datum: Nad 1983

0 0.5 1 2 Miles

