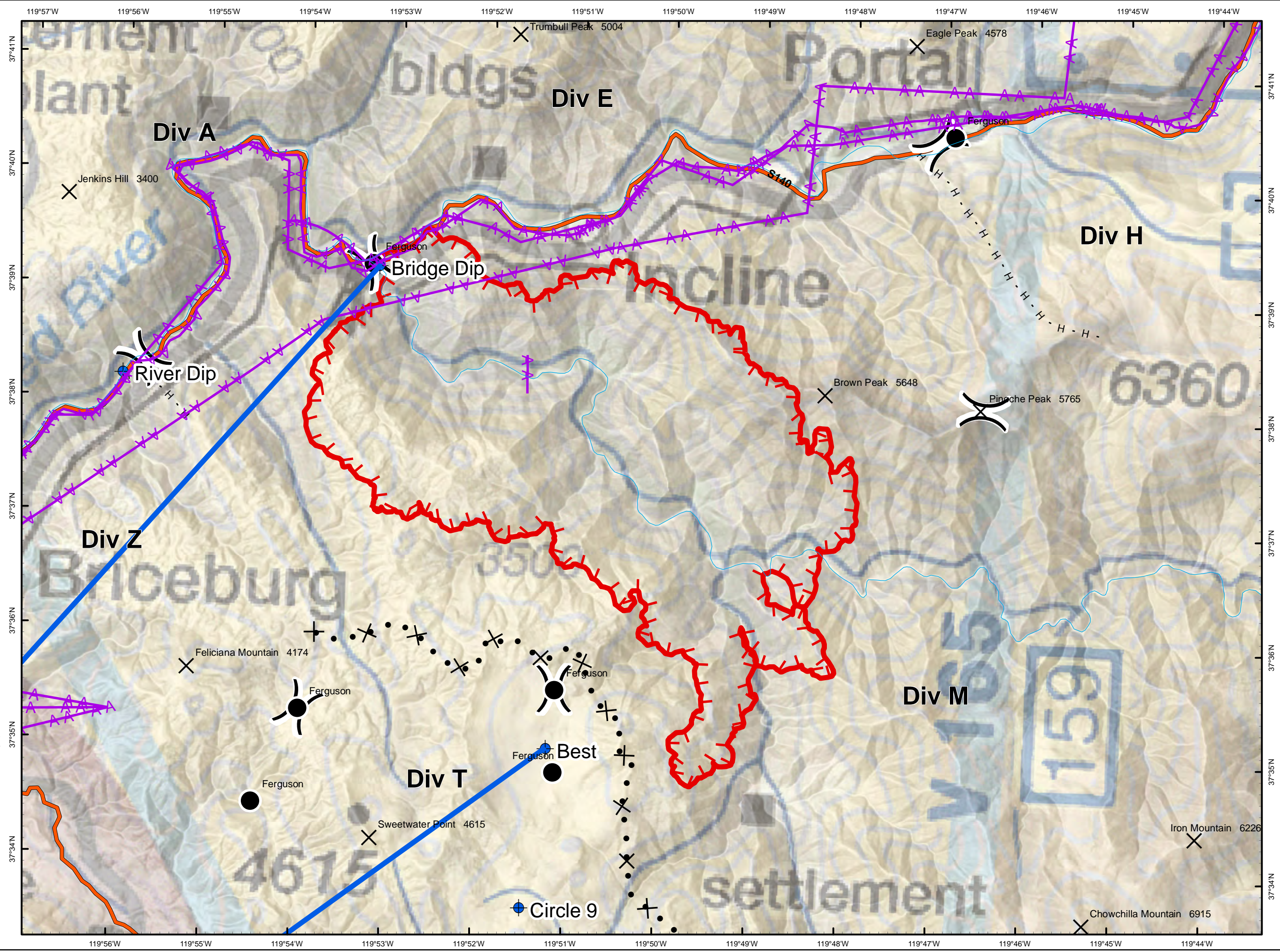


Ferguson Fire
CA-SNF-000745
Pilot Map
7/16/2018

-  Streams
-  Aviation Obstacle
-  FS Road
-  Highway
-  Division Break
-  Uncontrolled Fire Edge
-  TFR
-  FlightRoute
-  CheckPoint
-  Summit
-  FergusonHighway100K



1:57,480
 Datum: Nad 1983



Ferguson Pilot Location Information

TYPE	NAME	LATITUDE	LONGITUDE
Heli Base		37 30.614	120 2.445
Dip Site	Circle 9	37 33.619	119 51.461
Dip Site	Best	37 35.02	119 51.223
Drop Point	DP-25	37 34.811	119 51.139
Drop Point	DP-20	37 35.532	119 51.146
Drop Point	DP-35	37 34.483	119 54.447
Drop Point	DP-40	37 33.052	119 55.404
Drop Point	DP-5	37 40.465	119 46.911
Drop Point	DP-1	37 39.218	119 53.271
Mud Pit	Mariposa	37 29.873	119 58.528
Dip Site	River Dip	37 38.212	119 55.993
Drop Point	DP-30	37 35.309	119 53.964
Dip Site	Bridge Dip	37 39.202	119 53.201

Radio Frequencies

FREQUENCY	RX	TONE	TX	TONE	AM/FM
AIR TACTICS	172.4750		172.4750		FM
COMMAND	172.2250		164.7875	(T1) 110.9 (T2) 123.0	FM
AIR TO GROUND TAC	168.400		168.400		FM
AIR TO GROUND COMMAND	169.2875		169.2875		FM
DECK	163.100		163.100		FM
MARIPOSA UNICOM	122.7		122.7		AM
ROTOR VIC	119.225		119.225		AM
BRIEFING VIC	128.225		128.225		AM
AIR GUARD	168.6250		168.6250		

