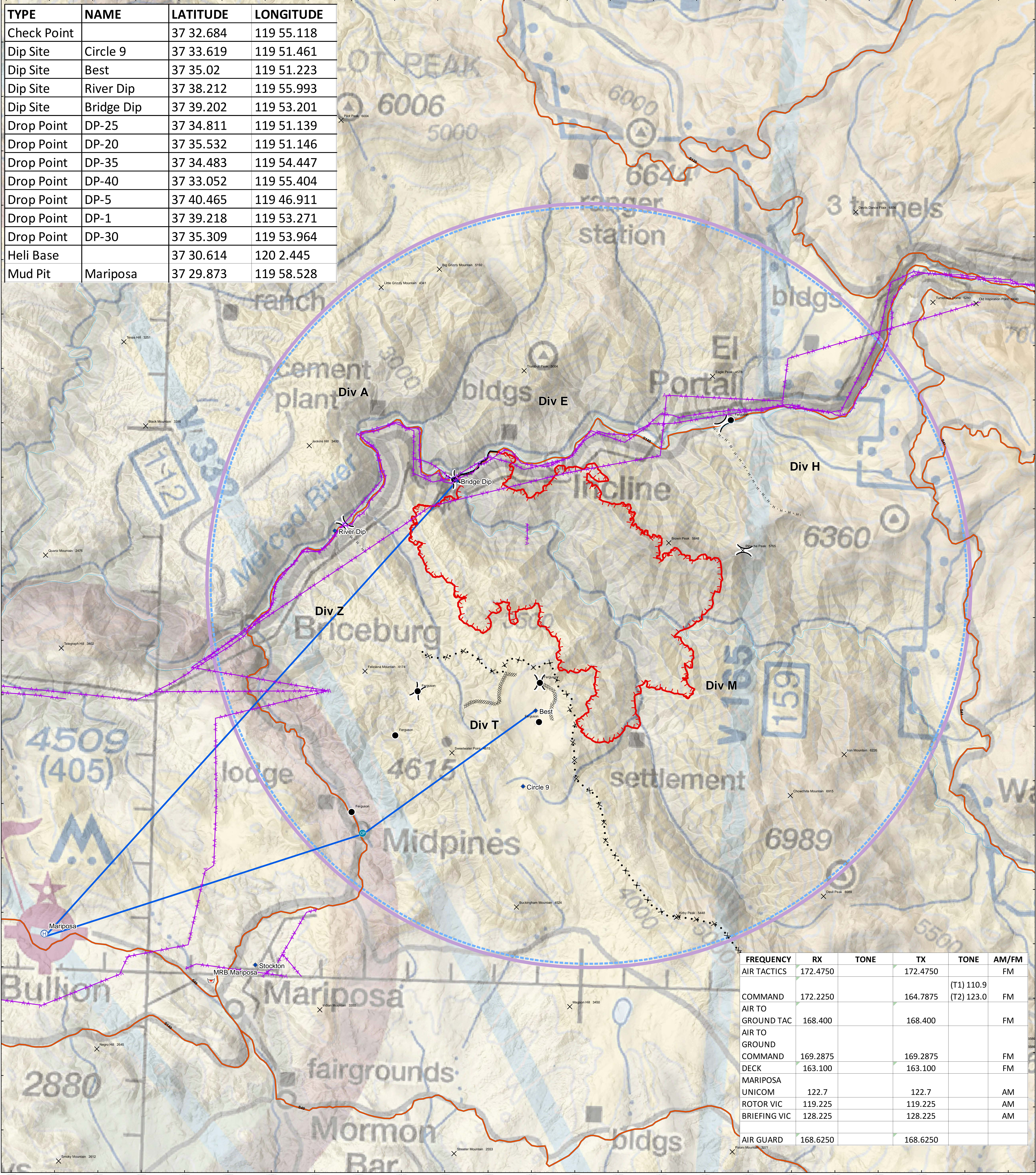


| TYPE        | NAME       | LATITUDE  | LONGITUDE  |
|-------------|------------|-----------|------------|
| Check Point |            | 37 32.684 | 119 55.118 |
| Dip Site    | Circle 9   | 37 33.619 | 119 51.461 |
| Dip Site    | Best       | 37 35.02  | 119 51.223 |
| Dip Site    | River Dip  | 37 38.212 | 119 55.993 |
| Dip Site    | Bridge Dip | 37 39.202 | 119 53.201 |
| Drop Point  | DP-25      | 37 34.811 | 119 51.139 |
| Drop Point  | DP-20      | 37 35.532 | 119 51.146 |
| Drop Point  | DP-35      | 37 34.483 | 119 54.447 |
| Drop Point  | DP-40      | 37 33.052 | 119 55.404 |
| Drop Point  | DP-5       | 37 40.465 | 119 46.911 |
| Drop Point  | DP-1       | 37 39.218 | 119 53.271 |
| Drop Point  | DP-30      | 37 35.309 | 119 53.964 |
| Heli Base   |            | 37 30.614 | 120 2.445  |
| Mud Pit     | Mariposa   | 37 29.873 | 119 58.528 |



|  |                        |  |                   |  |                |
|--|------------------------|--|-------------------|--|----------------|
|  | Division Break         |  | CheckPoint        |  | Dip Site       |
|  | Uncontrolled Fire Edge |  | Summit            |  | Drop Point     |
|  | Aviation Obstacle      |  | FlightRoute       |  | Helibase       |
|  | TFR                    |  | Retardant/Mud Pit |  | Division Break |

**Ferguson Fire**  
**CA-SNF-000745**  
**Pilot Map**  
**7/17/2018**

1:40,000  
 Datum: Nad 1983



0 0.5 1 2 Miles