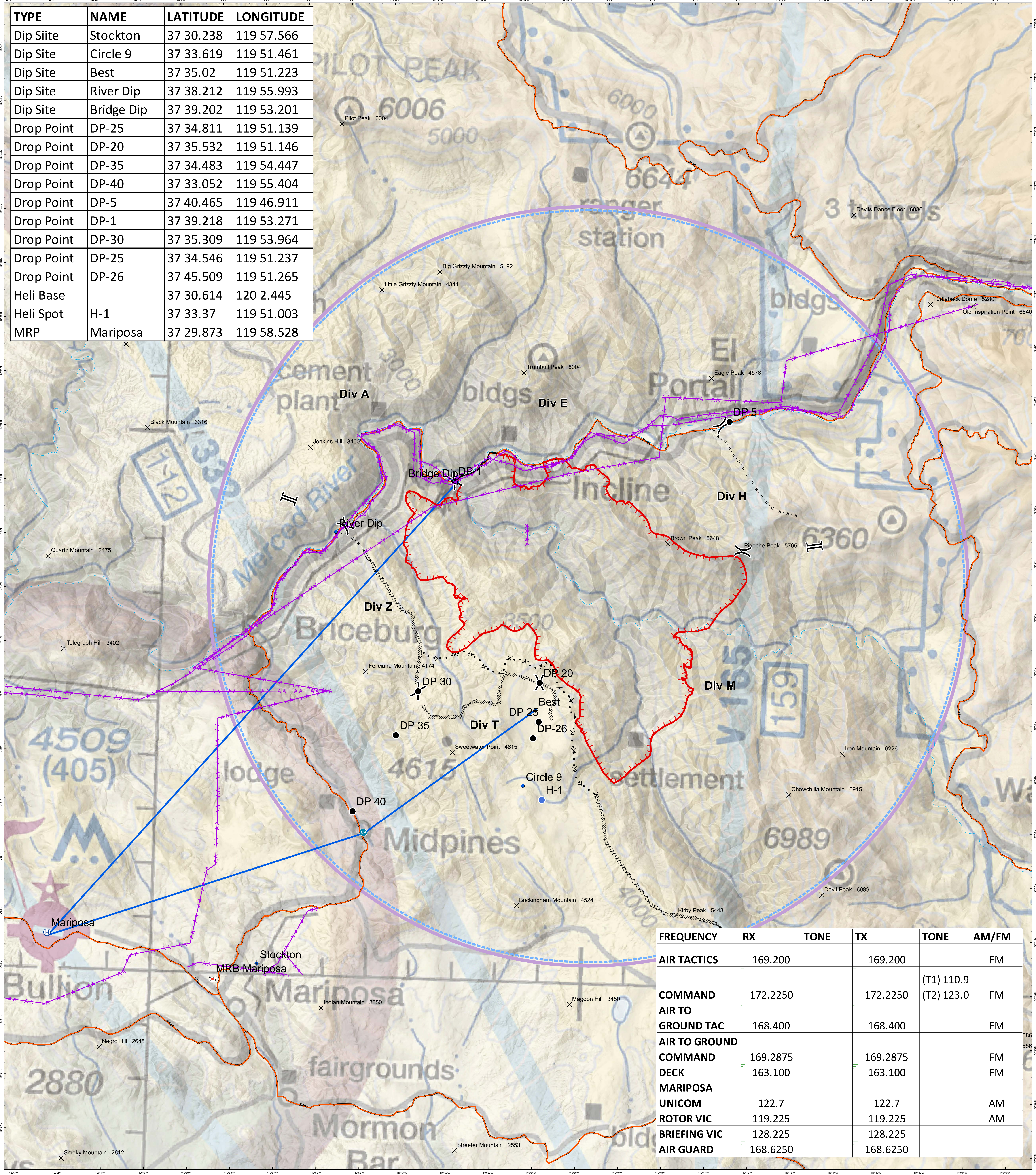


TYPE	NAME	LATITUDE	LONGITUDE
Dip Site	Stockton	37 30.238	119 57.566
Dip Site	Circle 9	37 33.619	119 51.461
Dip Site	Best	37 35.02	119 51.223
Dip Site	River Dip	37 38.212	119 55.993
Dip Site	Bridge Dip	37 39.202	119 53.201
Drop Point	DP-25	37 34.811	119 51.139
Drop Point	DP-20	37 35.532	119 51.146
Drop Point	DP-35	37 34.483	119 54.447
Drop Point	DP-40	37 33.052	119 55.404
Drop Point	DP-5	37 40.465	119 46.911
Drop Point	DP-1	37 39.218	119 53.271
Drop Point	DP-30	37 35.309	119 53.964
Drop Point	DP-25	37 34.546	119 51.237
Drop Point	DP-26	37 45.509	119 51.265
Heli Base		37 30.614	120 2.445
Heli Spot	H-1	37 33.37	119 51.003
MRP	Mariposa	37 29.873	119 58.528



FREQUENCY	RX	TONE	TX	TONE	AM/FM
AIR TACTICS	169.200		169.200		FM
COMMAND	172.2250		172.2250	(T1) 110.9 (T2) 123.0	FM
AIR TO GROUND TAC	168.400		168.400		FM
AIR TO GROUND COMMAND	169.2875		169.2875		FM
DECK	163.100		163.100		FM
MARIPOSA UNICOM	122.7		122.7		AM
ROTOR VIC	119.225		119.225		AM
BRIEFING VIC	128.225		128.225		
AIR GUARD	168.6250		168.6250		

	Dip Site		Retardant/Mud Pit
	Drop Point		Division Break
	Helibase		Branch Break
	Helispot		CheckPoint
			Summit
			FlightRoute

**Ferguson Fire**  
**CA-SNF-000745**  
**Pilot Map**  
**7/18/2018**

1:40,000  
 Datum: Nad 1983



0 0.5 1 2 Miles