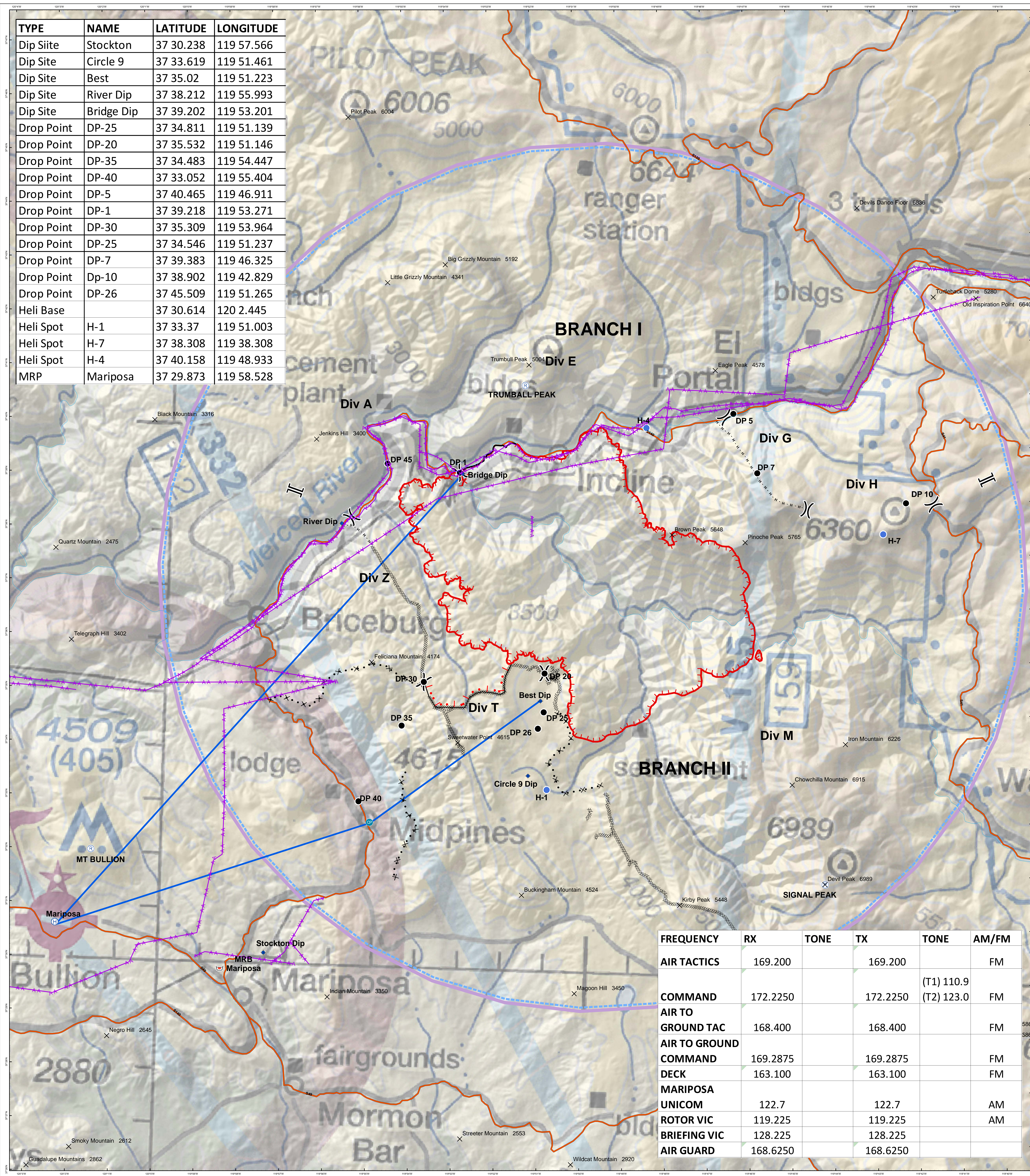


TYPE	NAME	LATITUDE	LONGITUDE
Dip Site	Stockton	37 30.238	119 57.566
Dip Site	Circle 9	37 33.619	119 51.461
Dip Site	Best	37 35.02	119 51.223
Dip Site	River Dip	37 38.212	119 55.993
Dip Site	Bridge Dip	37 39.202	119 53.201
Drop Point	DP-25	37 34.811	119 51.139
Drop Point	DP-20	37 35.532	119 51.146
Drop Point	DP-35	37 34.483	119 54.447
Drop Point	DP-40	37 33.052	119 55.404
Drop Point	DP-5	37 40.465	119 46.911
Drop Point	DP-1	37 39.218	119 53.271
Drop Point	DP-30	37 35.309	119 53.964
Drop Point	DP-25	37 34.546	119 51.237
Drop Point	DP-7	37 39.383	119 46.325
Drop Point	Dp-10	37 38.902	119 42.829
Drop Point	DP-26	37 45.509	119 51.265
Heli Base		37 30.614	120 2.445
Heli Spot	H-1	37 33.37	119 51.003
Heli Spot	H-7	37 38.308	119 38.308
Heli Spot	H-4	37 40.158	119 48.933
MRP	Mariposa	37 29.873	119 58.528



FREQUENCY	RX	TONE	TX	TONE	AM/FM
AIR TACTICS	169.200		169.200		FM
COMMAND	172.2250		172.2250	(T1) 110.9 (T2) 123.0	FM
AIR TO GROUND TAC	168.400		168.400		FM
AIR TO GROUND COMMAND	169.2875		169.2875		FM
DECK	163.100		163.100		FM
MARIPOSA UNICOM	122.7		122.7		AM
ROTOR VIC	119.225		119.225		AM
BRIEFING VIC	128.225		128.225		
AIR GUARD	168.6250		168.6250		

Division Break
 Uncontrolled Fire Edge
 Aviation Obstacle
 TFR
 Dip Site
 Drop Point
 Helibase
 Helispot
 CheckPoint
 Summit
 FlightRoute
 Repeater
 Retardant/Mud Pit
 Division Break
 Branch Break

Ferguson Fire
CA-SNF-000745
Pilot Map
7/19/2018

1:40,000
 Datum: Nad 1983

