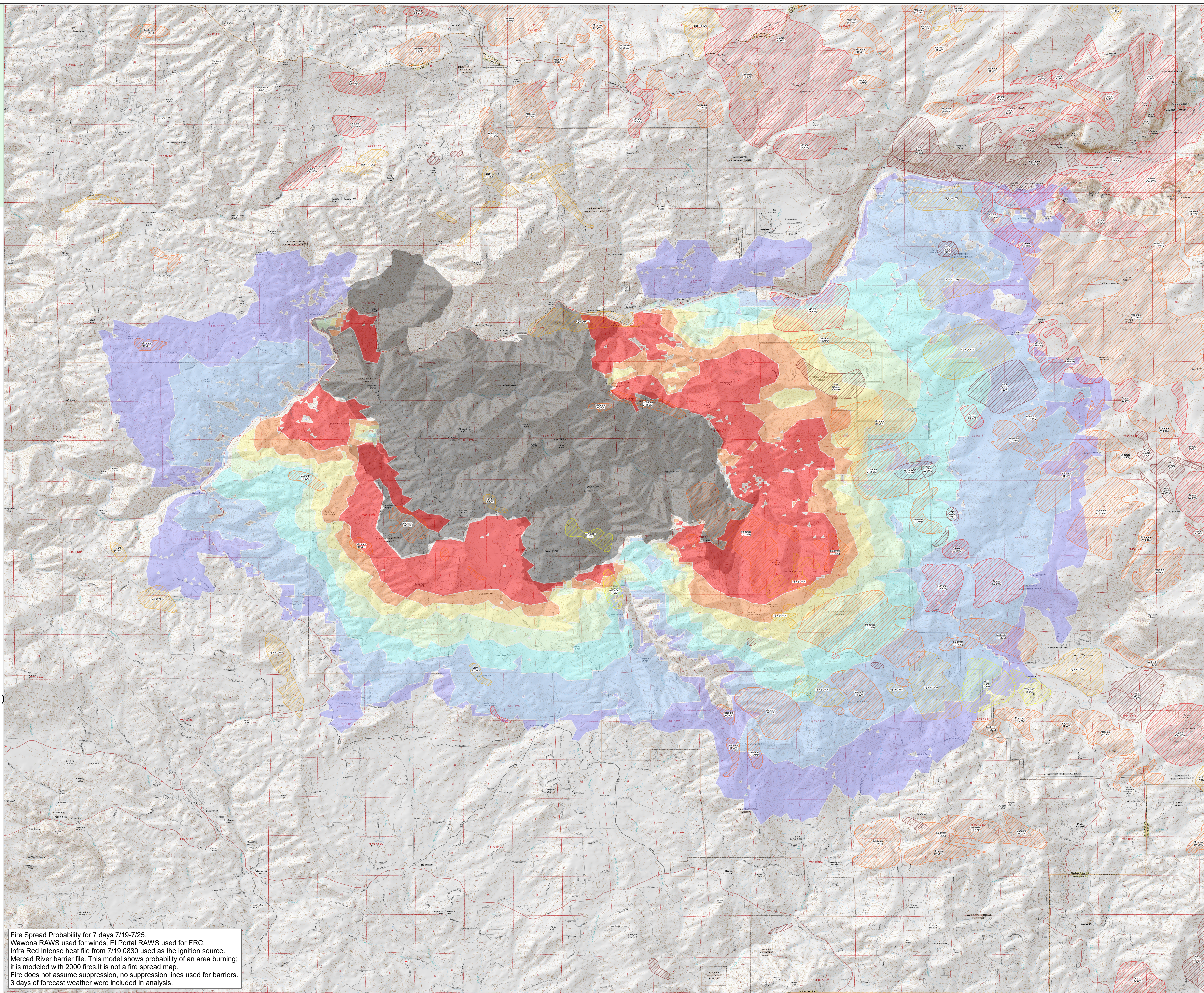


FSPPro

Ferguson
CA-SNF-000745
07/21/2018



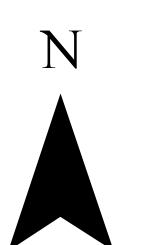
ADS17

Tree Mortality (Severity)

- Very Light (1-3%)
- Light (4-10%)
- Moderate (11-29%)
- Severe (30-50%)
- Very Severe (>50%)

Probability Percentage

- 80%
- 60%
- 40%
- 20%
- 5%
- 1%
- 0%



Fire Spread Probability for 7 days 7/19-7/25.
Wawona RAWs used for winds, El Portal RAWs used for ERC.
Infra Red Intense heat file from 7/19 0830 used as the ignition source.
Merced River barrier file. This model shows probability of an area burning;
it is modeled with 2000 fires. It is not a fire spread map.
Fire does not assume suppression, no suppression lines used for barriers.
3 days of forecast weather were included in analysis.