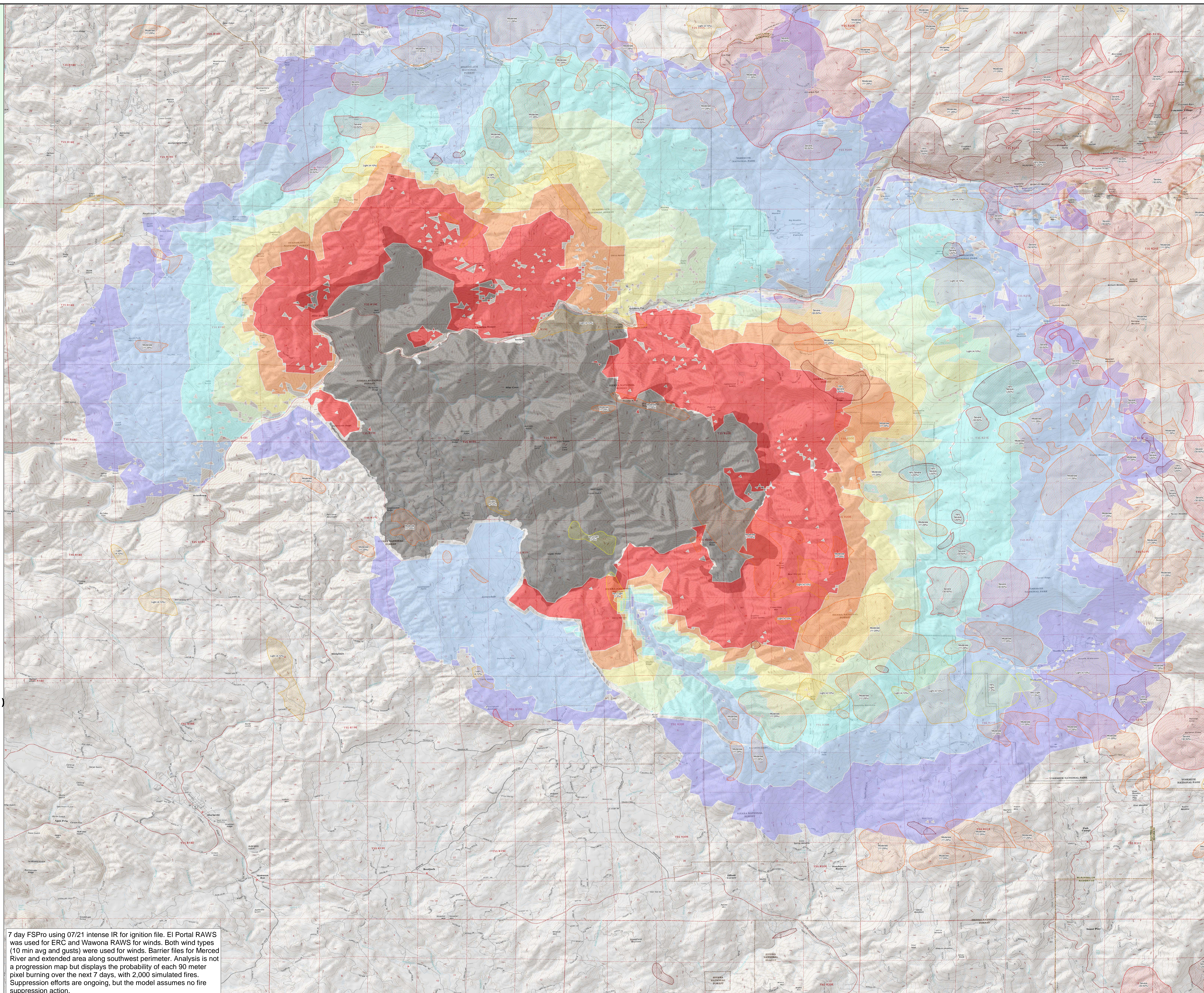
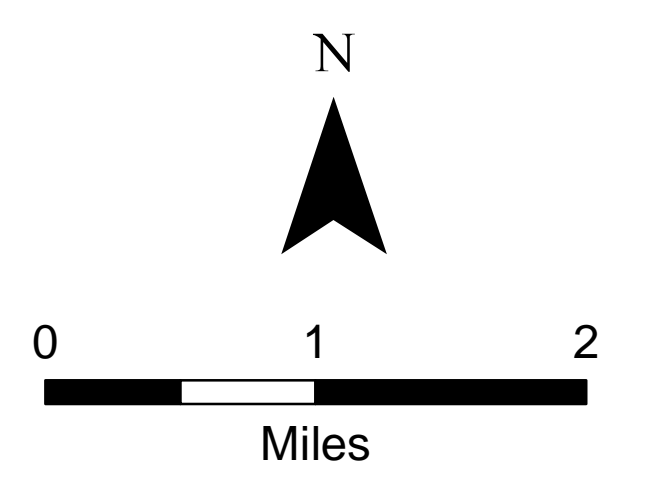


FSPPro

Ferguson
CA-SNF-000745
07/22/2018
0600



- ADS17**
Tree Mortality (Severity)
- Very Light (1-3%)
 - Light (4-10%)
 - Moderate (11-29%)
 - Severe (30-50%)
 - Very Severe (>50%)
- Probability Percentage**
- 80%
 - 60%
 - 40%
 - 20%
 - 5%
 - 1%
 - 0%



7 day FSPPro using 07/21 intense IR for ignition file. El Portal RAWs was used for ERC and Wawona RAWs for winds. Both wind types (10 min avg and gusts) were used for winds. Barrier files for Merced River and extended area along southwest perimeter. Analysis is not a progression map but displays the probability of each 90 meter pixel burning over the next 7 days, with 2,000 simulated fires. Suppression efforts are ongoing, but the model assumes no fire suppression action.