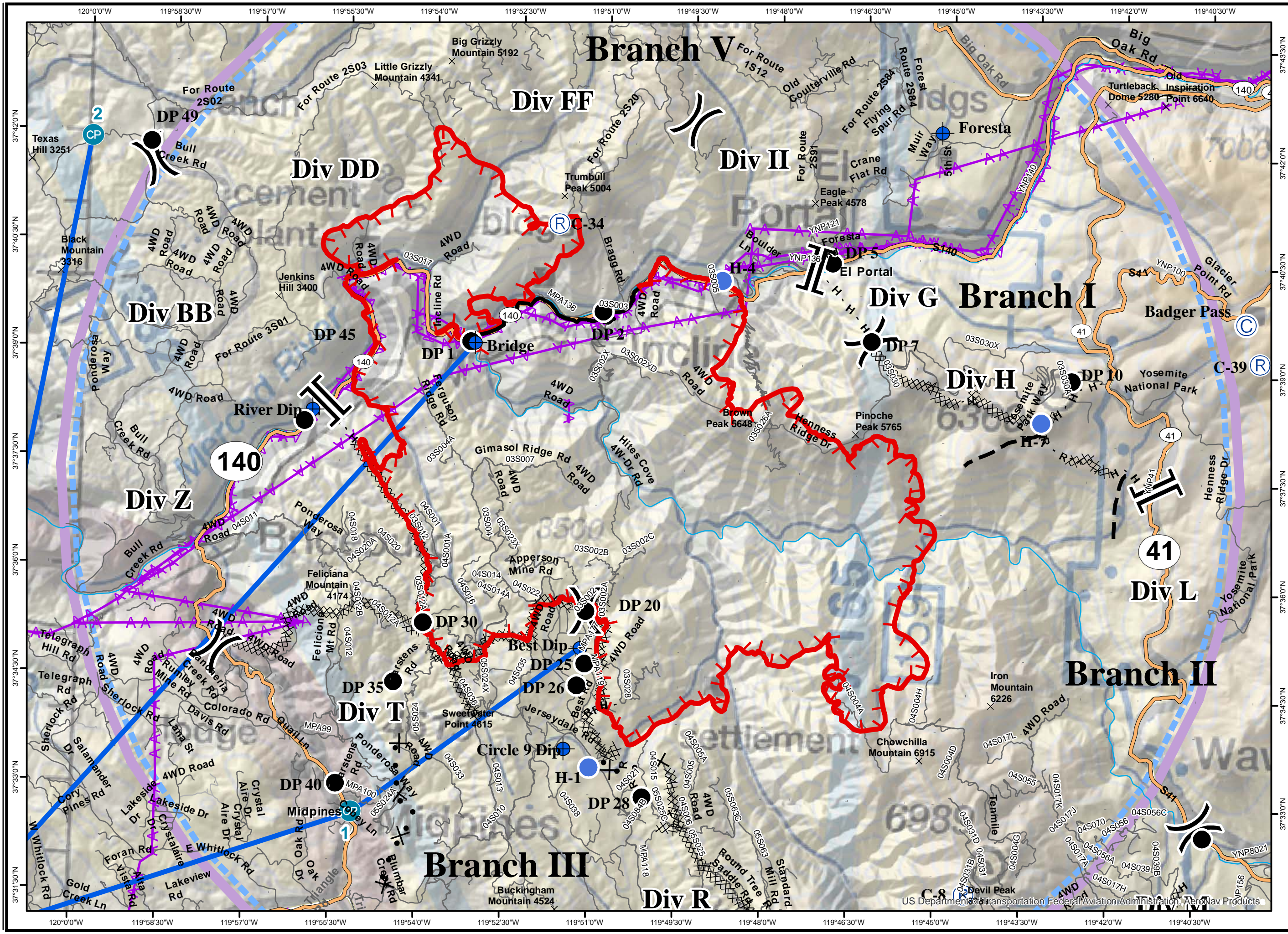


**Air Operations**  
 Ferguson  
 CA-SNF-000745  
 07/22/2018  
 0600



- CheckPoint
- Summit
- Camp
- Dip Site
- Drop Point
- Helispot
- Repeater
- Division Break
- Branch Break
- Uncontrolled Fire Edge
- Completed Line
- Completed Dozer Line
- H - H Completed Hand Line
- R - R Road as Completed Line
- Proposed Dozer Line
- Planned Fire Line
- FlightRoute
- Aviation Obstacle
- TFR





# Ferguson Pilot Location Information

TYPE	NAME	LATITUDE	LONGITUDE
Dip Site	Stockton	37 30.238	119 57.566
Dip Site	Best	37 35.02	119 51.223
Dip Site	Bridge Dip	37 39.202	119 53.201
Dip Site	Circle 9	37 33.619	119 51.461
Dip Site	Foresta	37 42.288	119 45.182
Dip Site	River Dip	37 38.212	119 55.993
Drop Point	DP-1	37 39.218	119 53.271
Drop Point	Dp-10	37 38.902	119 42.829
Drop Point	DP-12	37 32.628	119 40.32
Drop Point	DP-15	37 30.502	119 40.84
Drop Point	DP-2	37 39.68	119 50.996
Drop Point	DP-20	37 35.532	119 51.146
Drop Point	DP-25	37 34.811	119 51.139
Drop Point	DP-26	37 34.503	119 51.265
Drop Point	DP-28	37 32.983	119 50.076
Drop Point	DP-30	37 35.309	119 53.964
Drop Point	DP-35	37 34.483	119 54.447
Drop Point	DP-40	37 33.052	119 55.404
Drop Point	Dp-45	37 38.055	119 56.125
Drop Point	DP-5	37 40.442	119 47.027
Drop Point	DP-7	37 39.383	119 46.325
Heli Base		37 30.614	120 2.445
Heli Spot	H-1	37 33.37	119 51.003
Heli Spot	H-4	37 40.158	119 48.933
Heli Spot	H-7	37 38.308	119 38.308
MRP	Mariposa	37 29.873	119 58.528
Check Point 1		37 32.669	119 55.126
Check Point 2		37 41.925	119 59.974

## Radio Frequencies

FREQUENCY	RX	TONE	TX	TONE	AM/FM
AIR TACTICS	169.200		169.200		FM
COMMAND	172.2250		172.2250	(T1) 110.9 (T2) 123.0	FM
AIR TO GROUND TAC	168.400		168.400		FM
AIR TO GROUND COMMAND	169.2875		169.2875		FM
DECK	163.100		163.100		FM
MARIPOSA UNICOM	122.7		122.7		AM
ROTOR VIC	119.225		119.225		AM
BRIEFING VIC	128.225		128.225		
AIR GUARD	168.6250		168.6250		

