

Air Operations

Ferguson

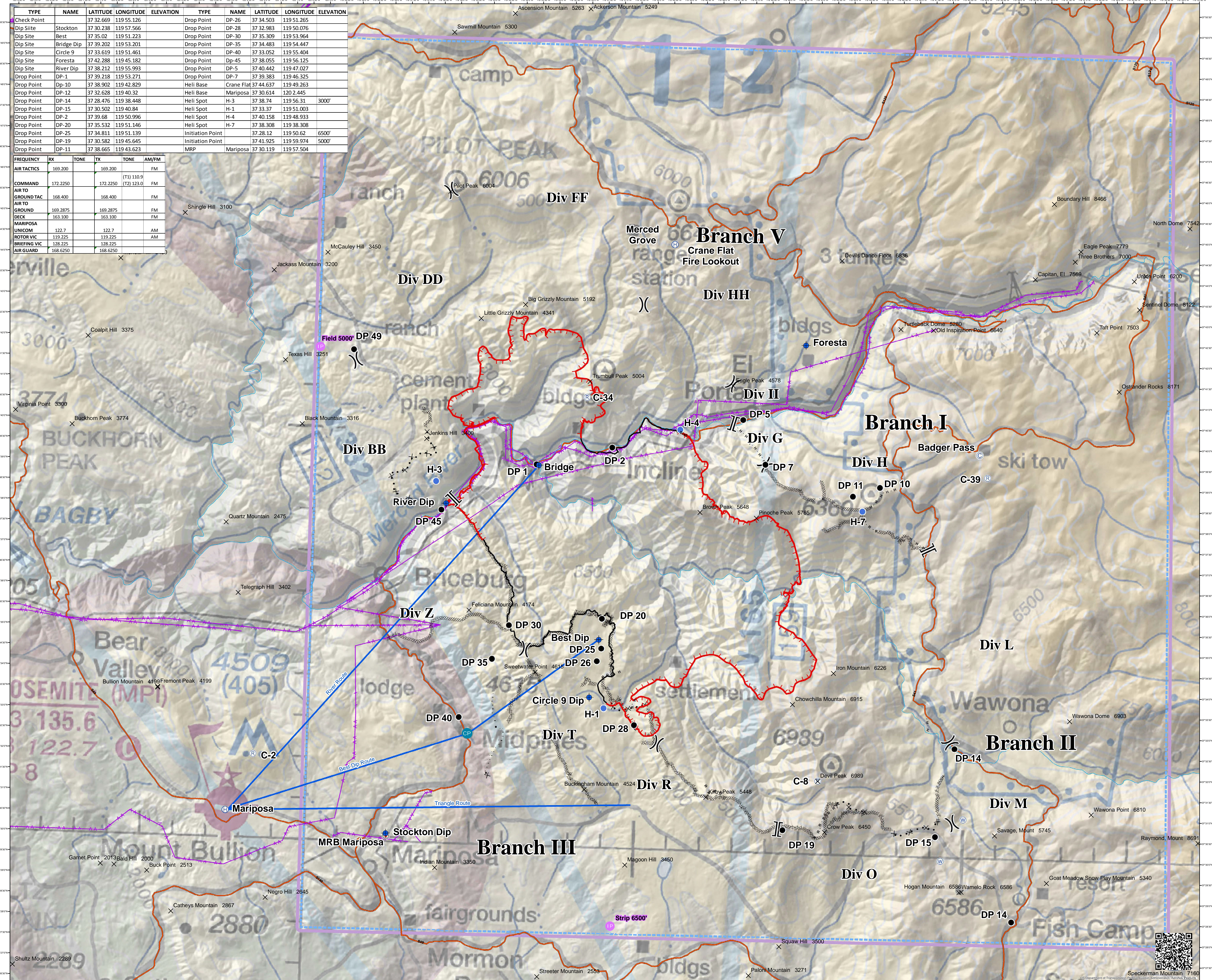
CA-SNF-000745
07/24/2018
0600



- Check Pt.
- Initiation Pt.
- Summit
- Camp
- Dip Site
- Drop Point
- Heli Base
- Heli Spot
- Repeater
- Retardant/Mud Pit
- Water Source
- Division Break
- Branch Break
- Uncontrolled Fire Edge
- Completed Line
- Completed Dozer Line
- Completed Hand Line
- Road as Completed Line
- Proposed Dozer Line
- Creek
- Flight Route
- Aviation Obstacle
- TFR

TYPE	NAME	LATITUDE	LONGITUDE	ELEVATION	TYPE	NAME	LATITUDE	LONGITUDE	ELEVATION
Check Point	Stockton	37 32.669	119 55.126		Drop Point	DP-26	37 34.503	119 51.265	
Dip Site	Best	37 35.02	119 51.223		Drop Point	DP-28	37 32.983	119 50.076	
Dip Site	Bridge Dip	37 39.202	119 53.201		Drop Point	DP-30	37 35.309	119 53.964	
Dip Site	Circle 9	37 33.619	119 51.461		Drop Point	DP-35	37 34.483	119 54.447	
Dip Site	Foresta	37 42.288	119 45.182		Drop Point	DP-40	37 33.052	119 55.404	
Dip Site	River Dip	37 38.212	119 55.993		Drop Point	DP-45	37 38.055	119 56.125	
Drop Point	DP-1	37 39.218	119 53.271		Drop Point	DP-5	37 40.442	119 47.027	
Drop Point	DP-10	37 38.902	119 42.829		Drop Point	DP-7	37 39.383	119 46.325	
Drop Point	DP-12	37 32.628	119 40.32		Heli Base	Crane Flat	37 44.637	119 49.263	
Drop Point	DP-14	37 28.476	119 38.448		Heli Spot	Mariposa	37 30.614	120 2.445	
Drop Point	DP-15	37 30.502	119 40.84		Heli Spot	H-3	37 38.74	119 56.31	3000'
Drop Point	DP-2	37 39.68	119 50.996		Heli Spot	H-1	37 33.37	119 51.003	
Drop Point	DP-20	37 35.532	119 51.146		Heli Spot	H-4	37 40.158	119 48.933	
Drop Point	DP-25	37 34.811	119 51.139		Heli Spot	H-7	37 38.308	119 38.308	
Drop Point	DP-19	37 30.582	119 45.645		Initiation Point		37 28.12	119 50.62	6500'
Drop Point	DP-11	37 38.665	119 43.623		Initiation Point		37 41.925	119 59.974	5000'
					MRP	Mariposa	37 30.119	119 57.504	

FREQUENCY	RX	TX	AM/FM
AIR TACTICS	169.200	169.200	FM
COMMAND	172.2250	172.2250	FM
AIR TO GROUND TAC	168.400	168.400	FM
AIR TO GROUND	169.2875	169.2875	FM
DECC	163.100	163.100	FM
MARIPOSA	122.7	122.7	AM
UNICOM	119.225	119.225	AM
BRIEFING VIC	128.225	128.225	AM
AIR GUARD	168.6250	168.6250	AM



Speckerman Mountain 7160