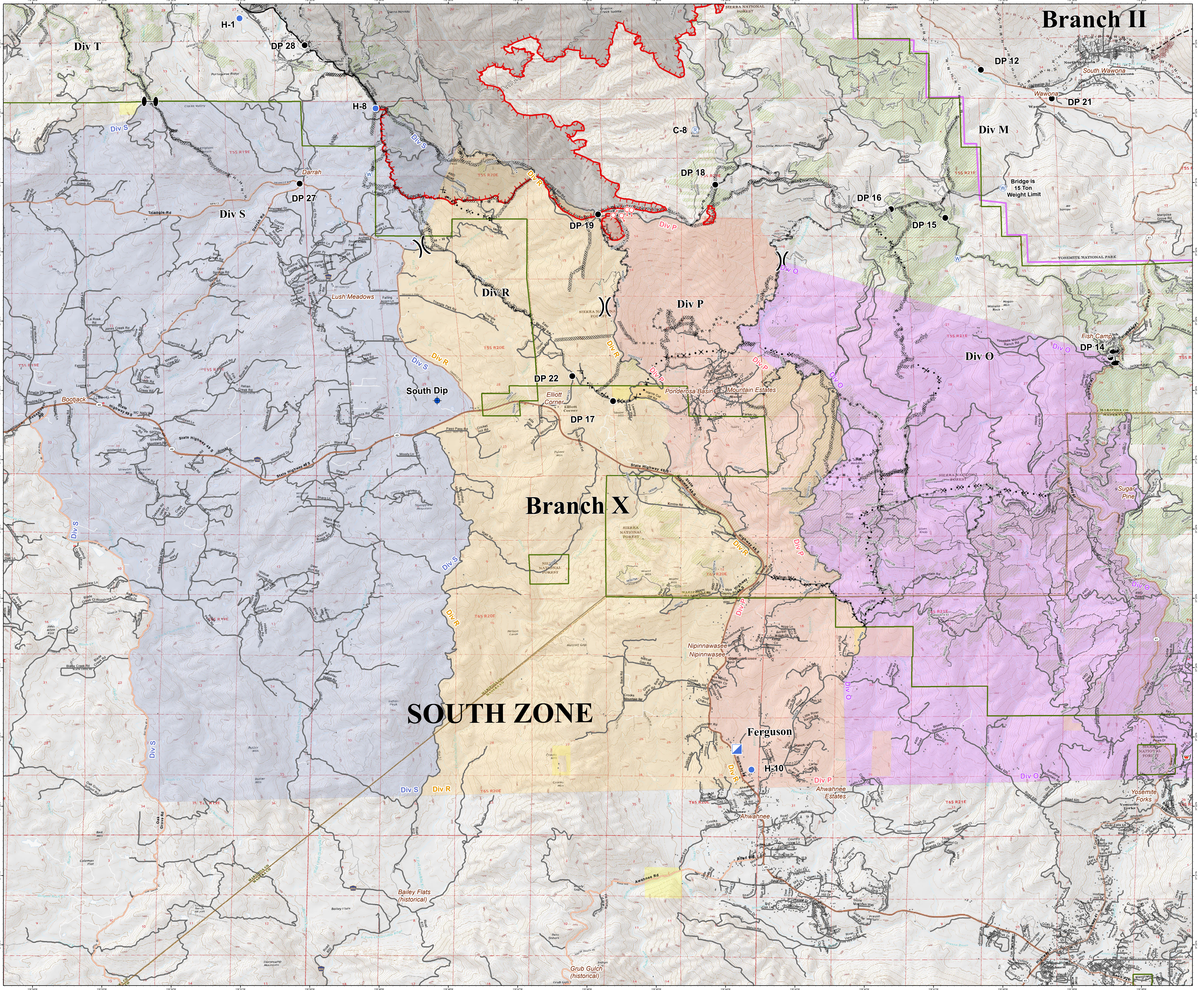




- Dip Site
- Drip Point
- Hotspot
- Incident Command Post
- Repeater
- Restoration MUD PI
- Spot Fire
- Water Source
- Zone Break
- Division Break
- Mine Hazard
- Historic Dozer Line
- Historic Hand Line
- Uncontrolled Fire Edge
- Completed Line
- Completed Dozer Line
- Completed Hand Line
- Road as Completed Line
- Proposed Dozer Line
- Planned Fire Line
- Trail
- Forest Boundary
- Historic Fuel Treatment
- BLM Land
- National Parks Boundary



Branch II

Branch X

SOUTH ZONE