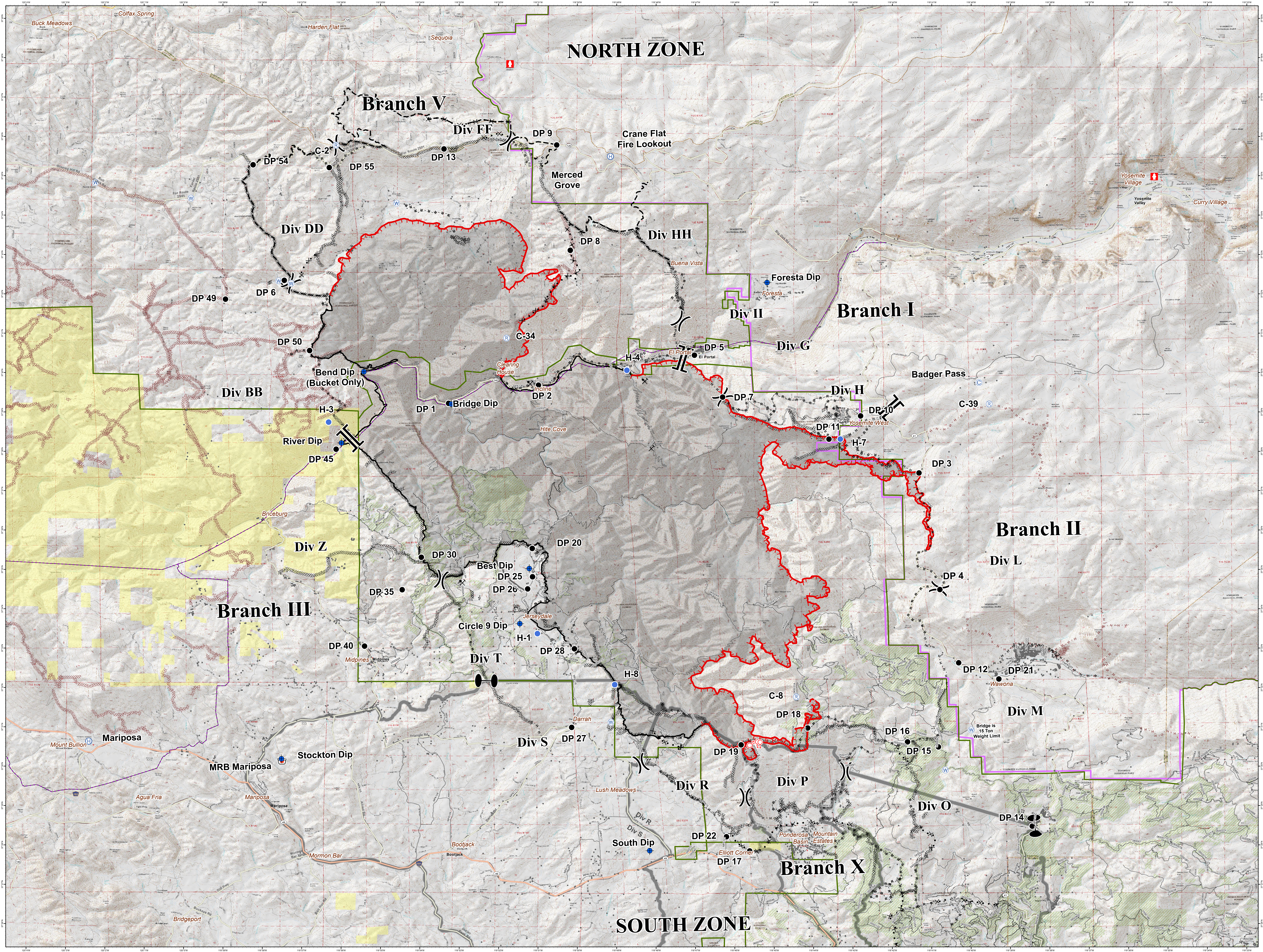


# Operations Overview

Ferguson  
CA-SNF-000745  
07/31/2018  
0600



- Camp
- Dip Site
- Drip Point
- Helibase
- Helispot
- Repeater
- Retarded Mud Pit
- Spot Fire
- Water Source
- Fire Hydrant
- Division Break
- Branch Break
- Zone Break
- 101-300 Volts
- Powerline < 100 Volts
- Uncontrolled Fire Edge
- Completed Line
- Completed Dozer Line
- Completed Hand Line
- Road as Completed Line
- Proposed Dozer Line
- Planned Fire Line
- Historic Dozer Line
- Historic Hand Line
- Mine Hazard
- Trail
- Forest Boundary
- Historic Fuel Treatment
- BLM Land
- National Parks Boundary



## NORTH ZONE

## SOUTH ZONE

### Branch V

### Branch I

### Branch II

### Branch III

### Branch X

#### Div FF

#### Div HH

#### Div II

#### Div G

#### Div H

#### Div L

#### Div M

#### Div DD

#### Div BB

#### Div Z

#### Div T

#### Div S

#### Div R

#### Div P

#### Div O

Mariposa

MRB Mariposa

Stockton Dip

South Dip

Crane Flat  
Fire Lookout

Merced  
Grove

Foresta Dip

Bend Dip  
(Bucket Only)

Bridge Dip

River Dip

Best Dip

Circle 9 Dip

Darrah

C-8

DP 16

Mount Bullion

Agua Fria

Mariposa

Mormon Bar

Bootjack

Lush Meadows

Ponderosa Mountain  
Basin Estates

Elliott Corner

Bridge is  
15 Ton  
Weight Limit

Wawona

0 1 2  
Miles

