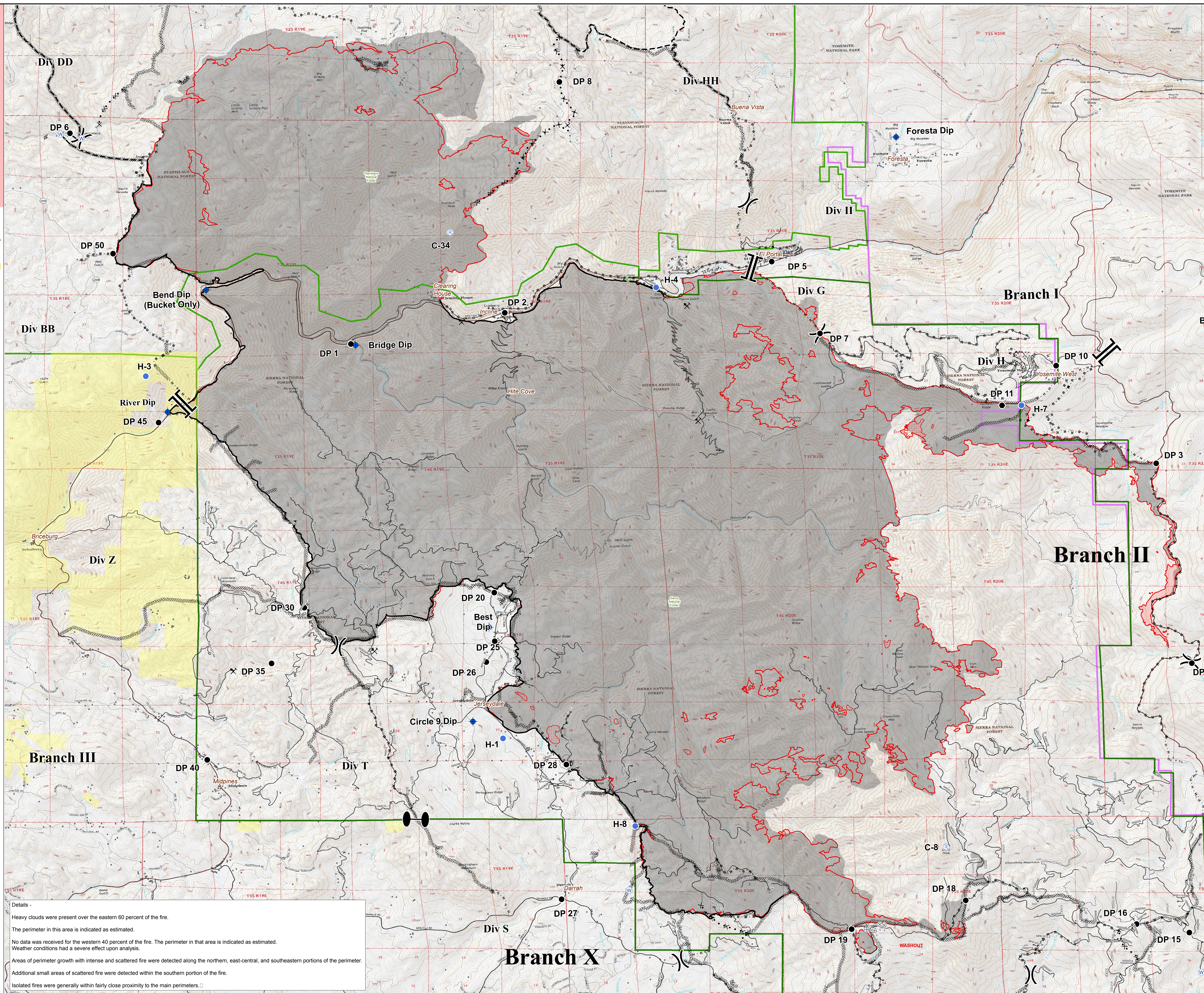




**Legend:**

- Dip Site
- Drop Point
- Helipad
- Repeater
- Retardant/Mud Pit
- Spot Fire
- Water Source
- Division Break
- Branch Break
- Zone Break
- Completed Line
- Completed Dozer Line
- Completed Hand Line
- Road as Completed Line
- Proposed Dozer Line
- Planned Fire Line
- Mine Hazard
- Trail
- Isolated Heat
- Intense Heat
- Scattered Heat
- Heat Perimeter 20180731 0300 hrs
- BLM Land
- Sierra National Forest
- Stanislaus National Forest
- National Parks Boundary

**Scale:** 0 to 1 Miles



**Details -**  
 Heavy clouds were present over the eastern 60 percent of the fire.  
 The perimeter in this area is indicated as estimated.  
 No data was received for the western 40 percent of the fire. The perimeter in that area is indicated as estimated.  
 Weather conditions had a severe effect upon analysis.  
 Areas of perimeter growth with intense and scattered fire were detected along the northern, east-central, and southeastern portions of the perimeter.  
 Additional small areas of scattered fire were detected within the southern portion of the fire.  
 Isolated fires were generally within fairly close proximity to the main perimeters.