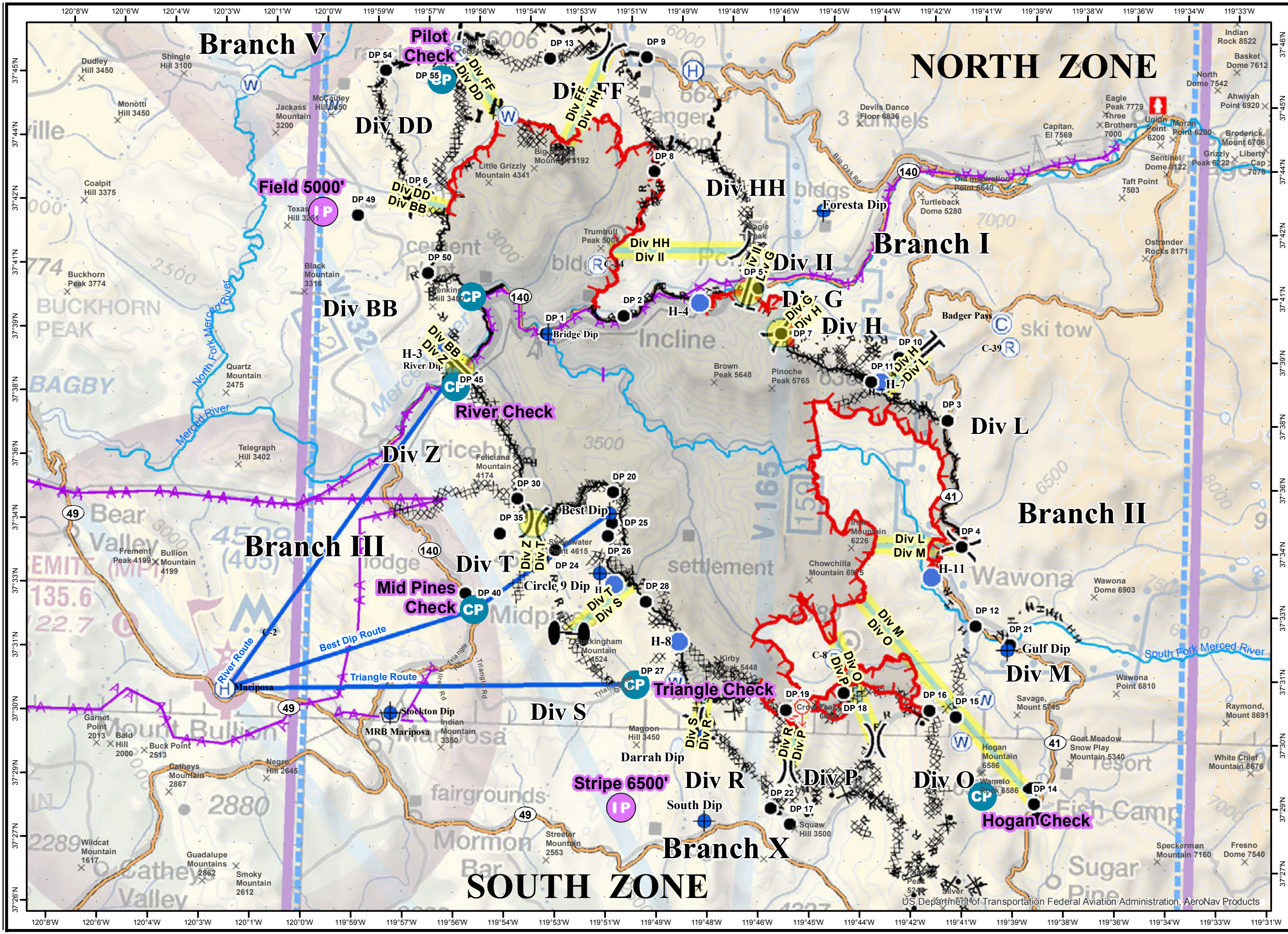


Air Operations
Ferguson
CA-SNF-000745
08/01/2018
0600



- CP Check Pt.
- IP Initiation Pt.
- Summit
- Camp
- Dip Site
- Drop Point
- Helibase
- Helispot
- Repeater
- Retardant/Mud Pit
- Spot Fire
- Water Source
- Fire Hydrant
- Division Break
- Branch Break
- Zone Break
- Uncontrolled Fire Edge
- Completed Line
- Completed Dozer Line
- Completed Hand Line
- Road as Completed Line
- Proposed Dozer Line
- Planned Fire Line
- Flight Route
- Aviation Obstacle
- Aircraft Division Delimiters
- TFR



NORTH ZONE

SOUTH ZONE

Branch I

Branch III

Branch X

Branch II

Branch V

Div DD

Div HH

Div BB

Div II

Div Z

Div L

Div T

Div M

Div S

Div R

Div O

Mid Pines Check

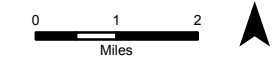
Triangle Check

Hogan Check

River Check

Field 5000'

Stripe 6500'



Ferguson Pilot Location Information

TYPE	NAME	LATITUDE	LONGITUDE	TYPE	NAME	LATITUDE	LONGITUDE	ELEVATION
Check Point		37 40.020	119 55.490	Drop Point	DP-18	37 31.037	119 44.110	
Check Point	Hogan	37 28.63	119 39.97	Drop Point	DP-19	37 30.582	119 45.645	
Check Point	Mid Pines	37 32.667	119 55.133	Drop Point	DP-20	37 35.532	119 51.146	
Check Point	Pilot Check	37 45.103	119 56.573	Drop Point	DP-21	37 32.222	119 39.298	
Check Point	River Check	37 37.887	119 55.892	Drop Point	DP-22	37 28.206	119 46.201	
Check Point	Triangle Check	37 31.014	119 50.310	Drop Point	DP-24	37 34.132	119 52.786	
Dip Site	Best Dip	37 35.02	119 51.223	Drop Point	DP-25	37 34.811	119 51.139	
Dip Site	Bend Dip (Bucket Only)	37 40.02	119 55.42	Drop Point	DP-26	37 34.503	119 51.265	
Dip Site	Bridge Dip	37 39.202	119 53.201	Drop Point	DP-27	37 30.984	119 50.145	
Dip Site	Circle 9 Dip	37 33.619	119 51.461	Drop Point	DP-28	37 32.983	119 50.076	
Dip Site	Darrah Dip	37 29.857	119 48.245	Drop Point	DP-30	37 35.309	119 53.964	
Dip Site	Foresta Dip	37 42.288	119 45.182	Drop Point	DP-35	37 34.483	119 54.447	
Dip Site	Gulf Dip	37 32.088	119 39.378	Drop Point	DP-40	37 33.052	119 55.404	
Dip Site	River Dip	37 38.212	119 55.993	Drop Point	DP-45	37 38.055	119 56.125	
Dip Site	Stockton Dip	37 30.238	119 57.566	Drop Point	DP-50	37 40.552	119 56.790	
Dip Site	South Dip	37 27.86	119 48.20	Drop Point	DP-54	37 45.282	119 58.235	
Drop Point	DP-1	37 39.218	119 53.271	Drop Point	DP-55	37 45.248	119 56.123	
Drop Point	DP-2	37 39.68	119 50.996	Heli Base	Crane Flat	37 44.637	119 49.263	
Drop Point	DP-3	37 37.451	119 41.323	Heli Base	Mariposa	37 30.614	120 2.445	
Drop Point	DP-4	37 34.487	119 40.793	Heli Spot	H-1	37 33.37	119 51.003	
Drop Point	DP-5	37 40.442	119 47.027	Heli Spot	H-3	37 38.74	119 56.31	3000'
Drop Point	DP-6	37 42.301	119 57.47	Heli Spot	H-4	37 40.062	119 48.77	
Drop Point	DP-7	37 39.383	119 46.325	Heli Spot	H-7	37 38.308	119 38.308	
Drop Point	DP-8	37 43.158	119 50.148	Heli Spot	H-8	37 32.071	119 49.051	
Drop Point	DP-9	37 45.782	119 50.523	Heli Spot	H-9	37 51.166	120 00.206	
Drop Point	DP-10	37 38.902	119 42.829	Heli Spot	H-10	37 22.528	119 43.626	
Drop Point	DP-11	37 38.312	119 43.606	Heli Spot	H-11	37 29.857	119 48.245	
Drop Point	DP-12	37 32.628	119 40.32	Initiation Point	Field	37 41.925	119 59.974	5000'
Drop Point	DP-13	37 45.684	119 53.386	Initiation Point	Miami	37 25.16	119 44.78	6500'
Drop Point	DP-14	37 28.476	119 38.448	Initiation Point	Stripe	37 28.12	119 50.62	6500'
Drop Point	DP-15	37 30.502	119 40.84	MRP	Sky	37 22.707	119 37.347	
Drop Point	DP-16	37 30.616	119 41.612	MRP	Mariposa	37 30.119	119 57.504	
Drop Point	DP-17	37 27.854	119 45.625					

Radio Frequencies

FREQUENCY	RX	TX	AM/FM
AIR TACTICS	169.200	169.200	FM
COMMAND	172.2250	172.2250	(T1) 110.9 (T2) 123.0 FM
AIR TO GROUND TAC	168.400	168.400	FM
AIR TO GROUND	169.2875	169.2875	FM
DECK	163.100	163.100	FM
MARIPOSA UNICOM	122.7	122.7	AM
ROTOR VIC	119.775	119.775	AM
BRIEFING VIC	128.225	128.225	
AIR GUARD	168.6250	168.6250	

