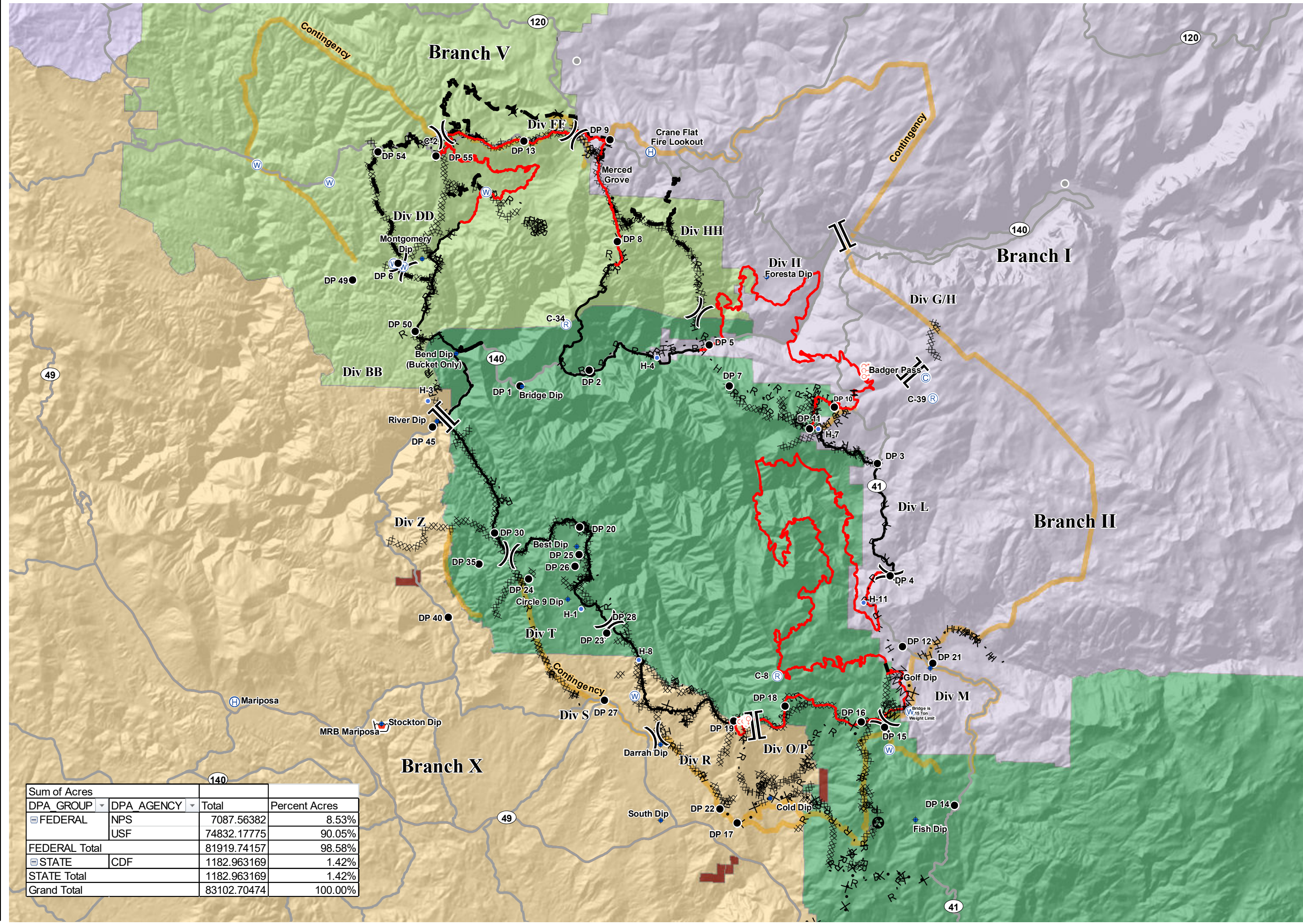


Cost Apportionment
 Ferguson Fire
 CA-SNF-000745
 08/05/2018



- Direct Protection Areas**
- MMU - CDF, MADERA-MARIPOSA-MERCED - MARIPOSA
 - SNF - USFS, SIERRA NF
 - STF - USFS, STANISLAUS NF - SONORA
 - TCU - CDF, TUOLUMNE-CALAVERAS - SAN ANDREAS
 - YNP - NPS, YOSEMITE NP - YOSEMITE NP
 - BIA
- PACE**
- Contingency
 - Camp
 - Dip Site
 - Drop Point
 - Helibase
 - Helispot
 - Repeater
 - Retardant/Mud Pit
 - Spot Fire
 - Water Source
 - Other
 - Division Break
 - Branch Break
 - Uncontrolled Fire Edge
 - Completed Line
 - Completed Dozer Line
 - Completed Hand Line
 - Road as Completed Line
 - Access or Improved Road
 - Proposed Dozer Line
 - Fire Break Planned or Incomplete
 - Planned Fire Line
 - Other
 - Highways
 - Major Roads



Sum of Acres		Total	Percent Acres
DPA GROUP	DPA AGENCY		
FEDERAL	NPS	7087.56382	8.53%
	USF	74832.17775	90.05%
FEDERAL Total		81919.74157	98.58%
STATE	CDF	1182.963169	1.42%
STATE Total		1182.963169	1.42%
Grand Total		83102.70474	100.00%

