

**Cost Apportionment**  
**Ferguson Fire**  
 CA-SNF-000745  
 08/05/2018

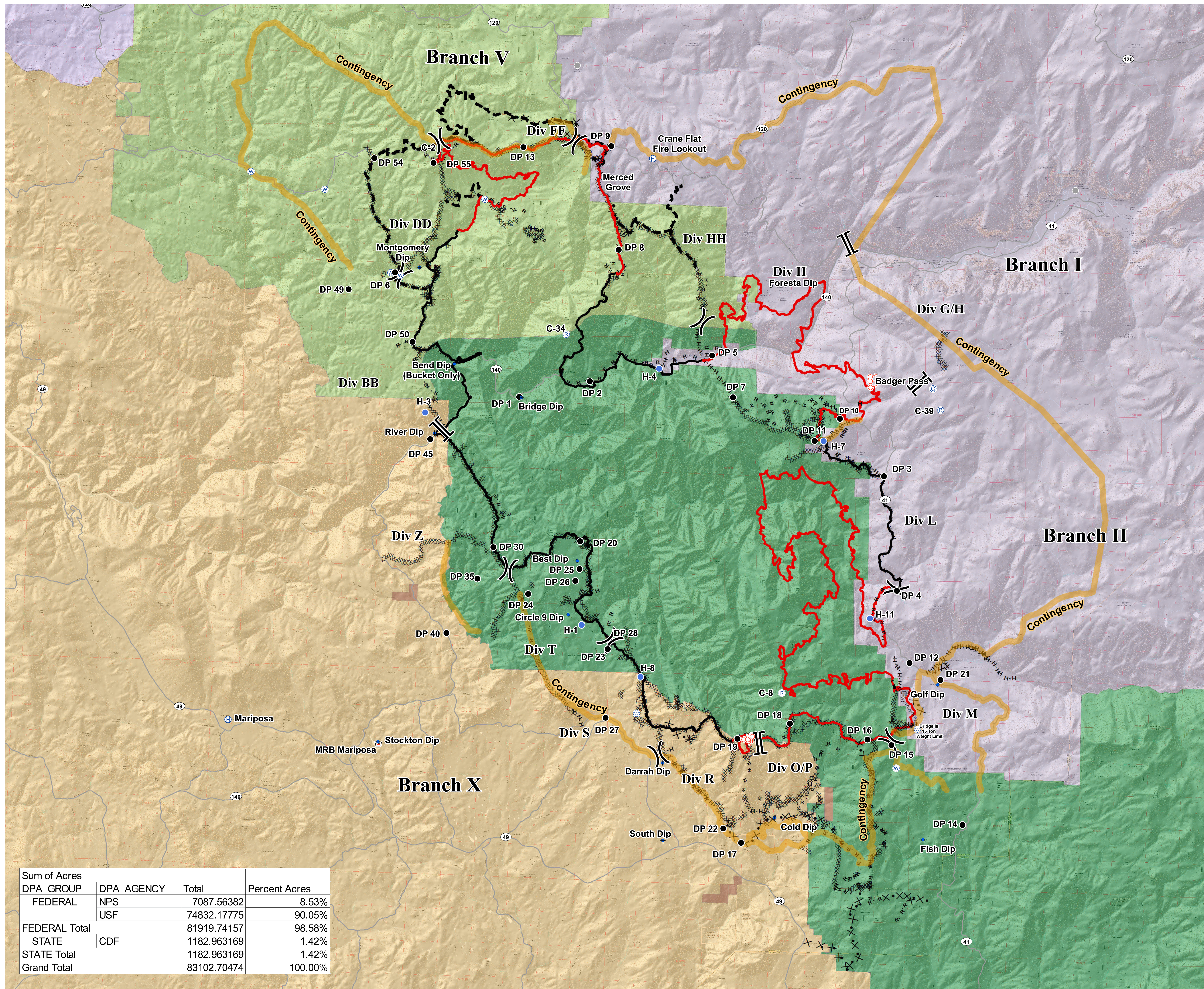


**Direct Protection Areas**

- MMU - CDF, MADERA-MARIPOSA... - MARIPOSA
- SNF - USFS, SIERRA NF
- STF - USFS, STANISLAUS NF - SONORA
- TCU - CDF, TUOLUMNE-CALAVE... - SAN ANDREAS
- YNP - NPS, YOSEMITE NP - YOSEMITE NP
- BUREAU OF INDIAN AFFAIRS

**PACE**

- Contingency
- Camp
- Dip Site
- Drop Point
- Helibase
- Helispot
- Repeater
- Retardant/Mud Pit
- Spot Fire
- Water Source
- Other
- Division Break
- Branch Break
- Uncontrolled Fire Edge
- Completed Line
- Completed Dozer Line
- Completed Hand Line
- Road as Completed Line
- Access or Improved Road
- Proposed Dozer Line
- Fire Break Planned or Incomplete
- Planned Fire Line
- Other
- Highways
- Major Roads



Sum of Acres			
DPA_GROUP	DPA_AGENCY	Total	Percent Acres
FEDERAL	NPS	7087.56382	8.53%
	USF	74832.17775	90.05%
<b>FEDERAL Total</b>		<b>81919.74157</b>	<b>98.58%</b>
STATE	CDF	1182.963169	1.42%
<b>STATE Total</b>		<b>1182.963169</b>	<b>1.42%</b>
<b>Grand Total</b>		<b>83102.70474</b>	<b>100.00%</b>

