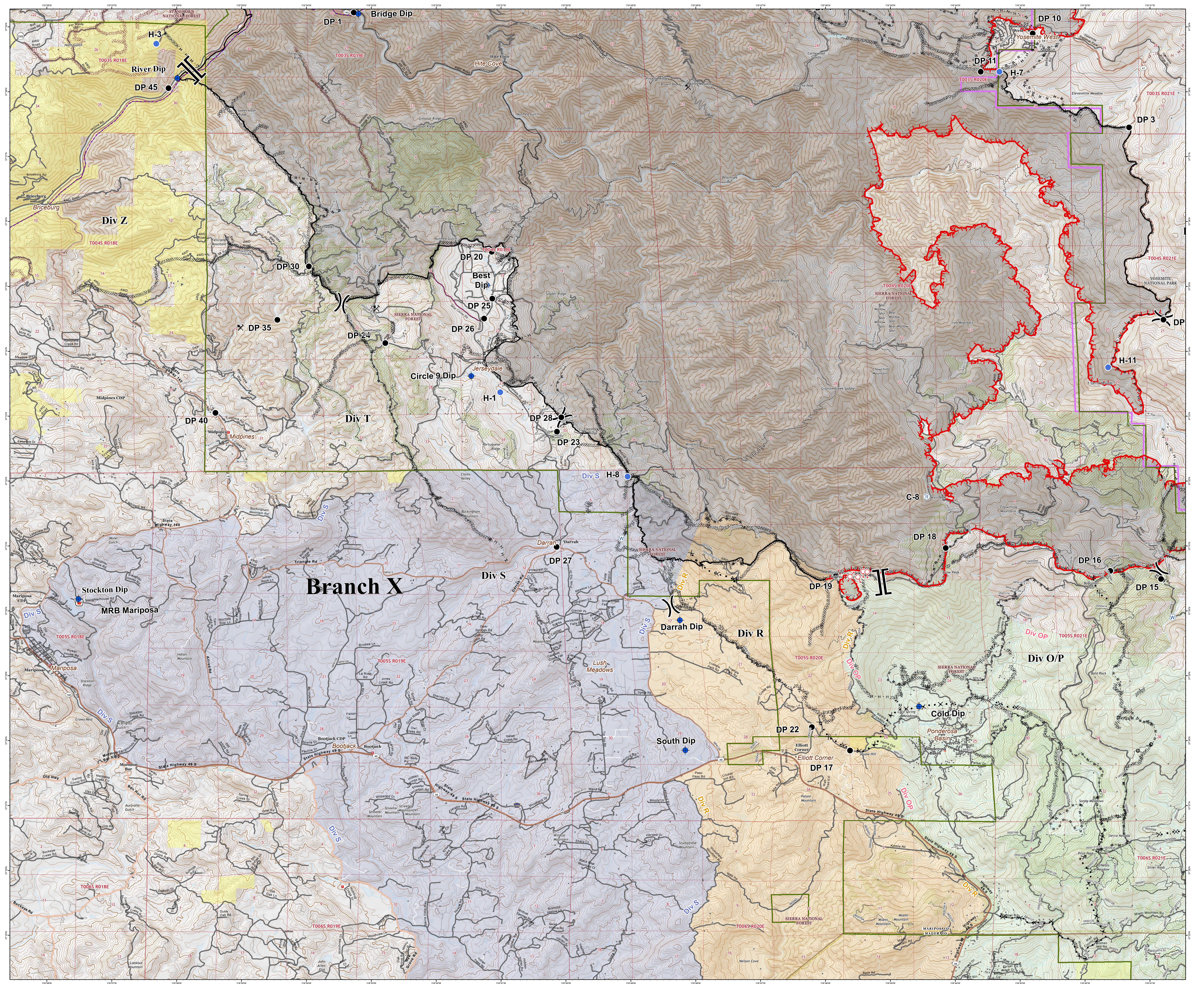




- Dip Site
- Drop Point
- Hotspot
- Repeater
- Retardant/Mud Pit
- Spot Fire
- Water Source
- Division Break
- Branch Break
- Bear/Clover Lane
- Mine Hazard
- Historic Dozer Line
- Historic Hand Line
- Powerline 1-100 Volts
- Uncontrolled Fire Edge
- Completed Line
- Completed Dozer Line
- Completed Hand Line
- Road as Completed Line
- Proposed Dozer Line
- Fire Break Planned or Incomplete
- Planned Fire Line
- Other
- Trail
- Forest Boundary
- Historic Fuel Treatment
- BLM Land
- National Parks Boundary



Branch X