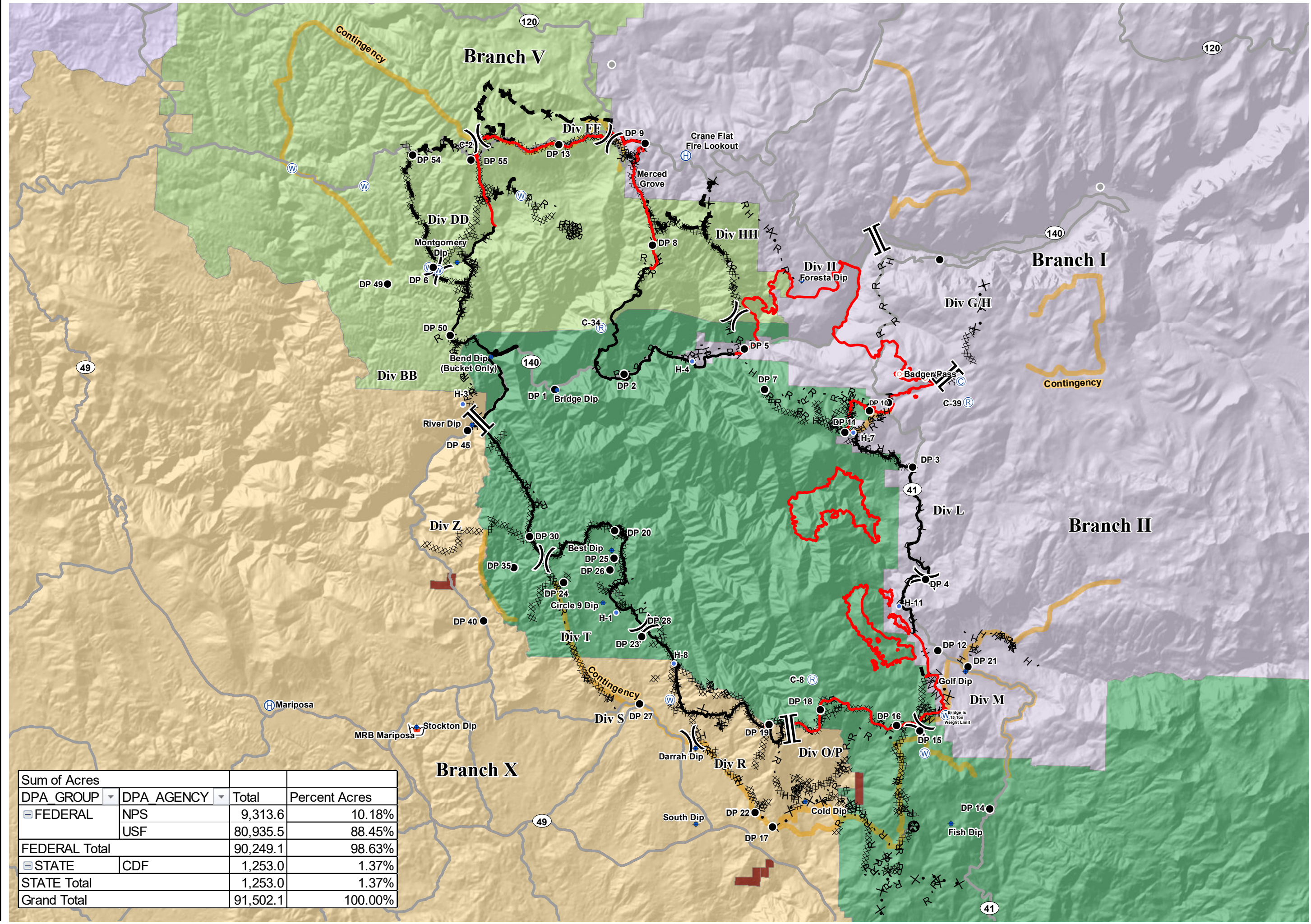


**Cost Apportionment**  
 Ferguson Fire  
 CA-SNF-000745  
 08/06/2018



- Direct Protection Areas**
- MMU - CDF, MADERA-MARIPOSA-MERCED-MARIPOSA
  - SNF - USFS, SIERRA NF
  - STF - USFS, STANISLAUS NF - SONORA
  - TCU - CDF, TUOLUMNE-CALAVERAS - SAN ANDREAS
  - YNP - NPS, YOSEMITE NP - YOSEMITE NP
  - BIA
- PACE**
- Contingency
  - Camp
  - Dip Site
  - Drop Point
  - Helibase
  - Helispot
  - Repeater
  - Retardant/Mud Pit
  - Spot Fire
  - Water Source
  - Other
  - Division Break
  - Branch Break
  - Uncontrolled Fire Edge
  - Completed Line
  - Completed Dozer Line
  - Completed Hand Line
  - Road as Completed Line
  - Access or Improved Road
  - Proposed Dozer Line
  - Fire Break Planned or Incomplete
  - Planned Fire Line
  - Other
  - Highways
  - Major Roads



Sum of Acres			
DPA GROUP	DPA AGENCY	Total	Percent Acres
FEDERAL	NPS	9,313.6	10.18%
	USF	80,935.5	88.45%
FEDERAL Total		90,249.1	98.63%
STATE	CDF	1,253.0	1.37%
STATE Total		1,253.0	1.37%
Grand Total		91,502.1	100.00%

