

Cost Apportionment
Ferguson Fire
 CA-SNF-000745
 08/06/2018

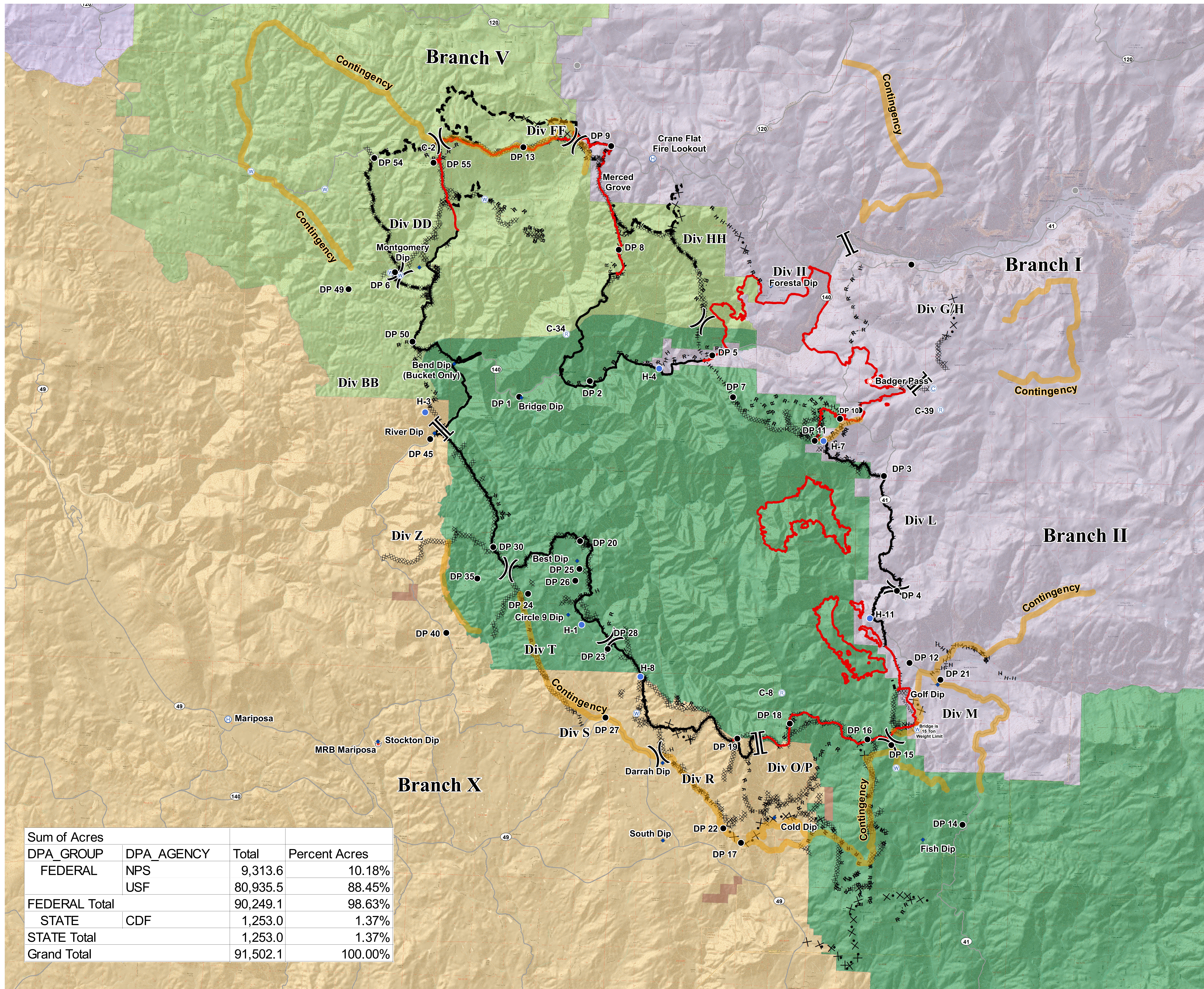


Direct Protection Areas

- MMU - CDF, MADERA-MARIPOSA... - MARIPOSA
- SNF - USFS, SIERRA NF
- STF - USFS, STANISLAUS NF - SONORA
- TCU - CDF, TUOLUMNE-CALAVE... - SAN ANDREAS
- YNP - NPS, YOSEMITE NP - YOSEMITE NP
- BUREAU OF INDIAN AFFAIRS

PACE

- Contingency
- Camp
- Dip Site
- Drop Point
- Helibase
- Helispot
- Repeater
- Retardant/Mud Pit
- Spot Fire
- Water Source
- Other
- Division Break
- Branch Break
- Uncontrolled Fire Edge
- Completed Line
- Completed Dozer Line
- Completed Hand Line
- Road as Completed Line
- Access or Improved Road
- Proposed Dozer Line
- Fire Break Planned or Incomplete
- Planned Fire Line
- Other
- Highways
- Major Roads



Sum of Acres		Total	Percent Acres
DPA_GROUP	DPA_AGENCY		
FEDERAL	NPS	9,313.6	10.18%
	USF	80,935.5	88.45%
FEDERAL Total		90,249.1	98.63%
STATE	CDF	1,253.0	1.37%
STATE Total		1,253.0	1.37%
Grand Total		91,502.1	100.00%

