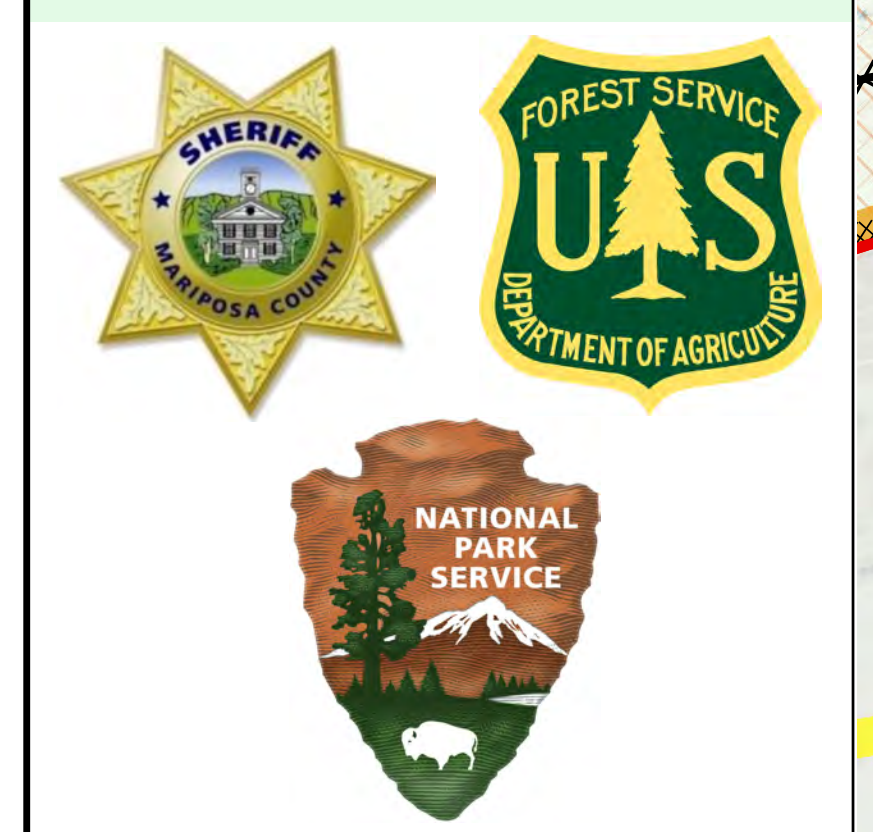


**FSPro Results**  
**7 Day**  
**Aug 3**  
**Ferguson**  
 CA-SNF-000745  
 08/06/2018  
 0600



\*Assumes no fire suppression

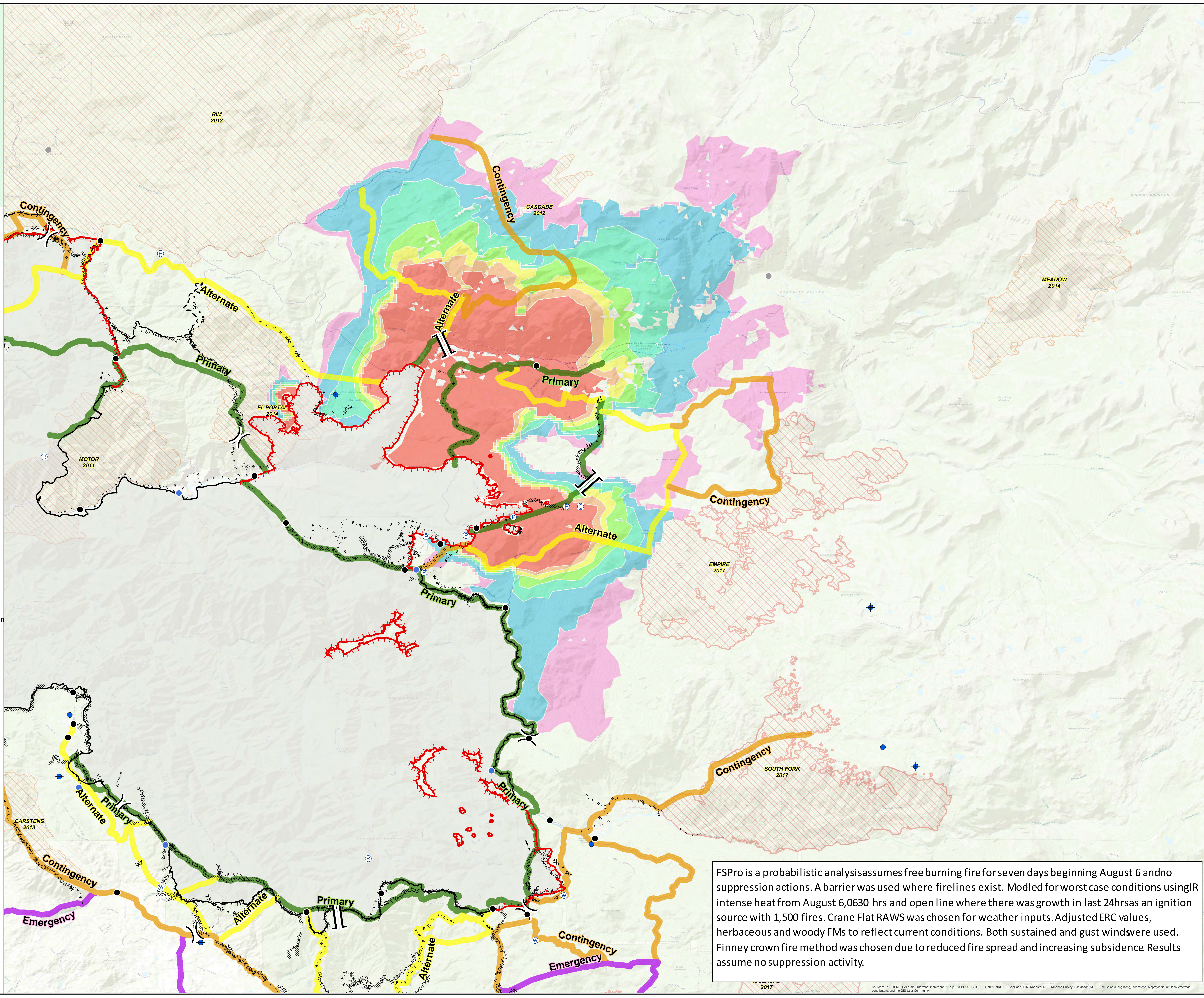
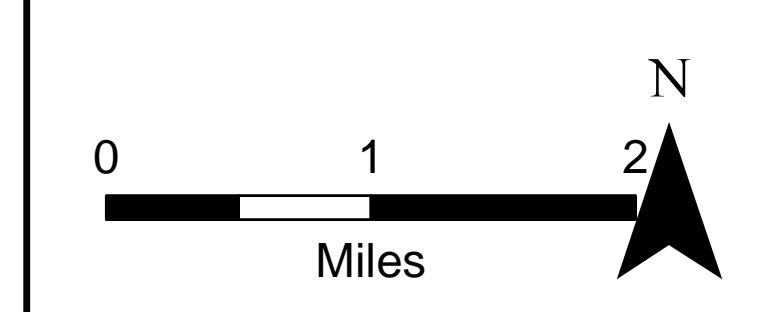
- ⊙ Camp
- ◆ Dip Site
- Drop Point
- ⊕ Helibase
- ⊙ Helispot
- ⊙ Pump
- ⊙ Repeater
- ⊙ Spot Fire
- ⊙ Water Source
- Other
- ) ( Division Break
- || Branch Break

- Uncontrolled Fire Edge
- Completed Line
- Completed Dozer Line
- - - Completed Hand Line
- R - R - Road as Completed Line
- Access or Improved Road
- × × × Proposed Dozer Line
- ~ ~ ~ Fire Break Planned or Incomplete
- - - Planned Fire Line

- PACE**
- Action**
- Primary
  - Alternate
  - Contingency
  - Emergency
  - Perimeter 0801 at 0200

- Probability Percentage**
- 80 - 100%
  - 60 - 79%
  - 40 - 59%
  - 20 - 39%
  - 5 - 19%
  - 0.2 - 4.9%
  - > 0.2%

- Historic Fires**
- 2017
  - 2010-2016



FSPro is a probabilistic analysis that assumes free burning fire for seven days beginning August 6 and no suppression actions. A barrier was used where firelines exist. Modelled for worst case conditions using IR intense heat from August 6, 0630 hrs and open line where there was growth in last 24 hrs as an ignition source with 1,500 fires. Crane Flat RAWs was chosen for weather inputs. Adjusted ERC values, herbaceous and woody FMs to reflect current conditions. Both sustained and gust winds were used. Finney crown fire method was chosen due to reduced fire spread and increasing subsidence. Results assume no suppression activity.