

3 Day Near Term Fire Behavior Prediction

Ferguson
CA-SNF-000745
08/06/2018



PACE

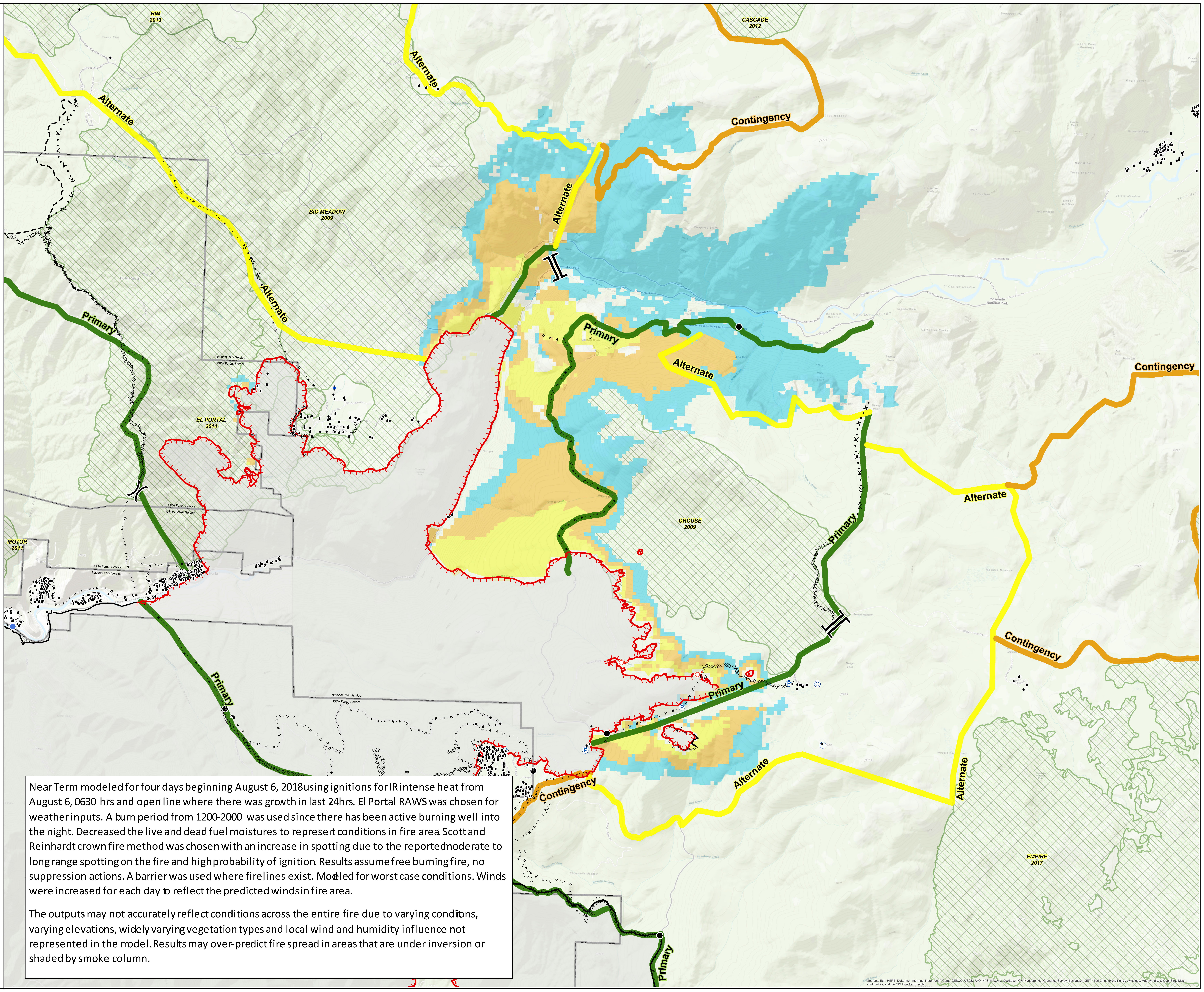
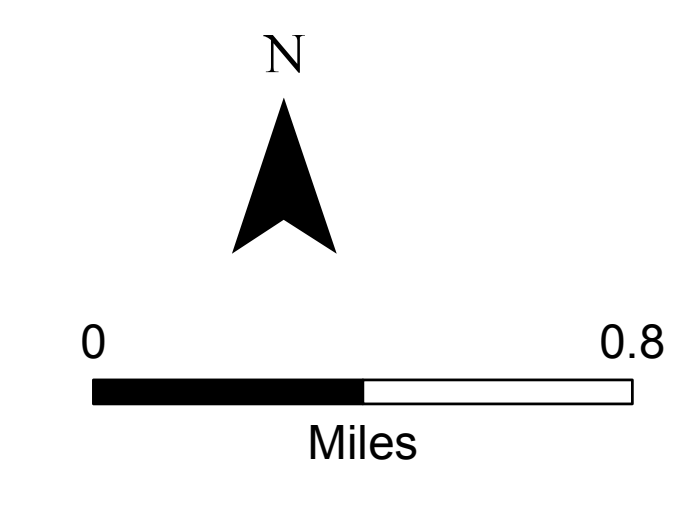
Action

- Primary (Green line)
- Alternate (Yellow line)
- Contingency (Orange line)
- Perimeter 20180802 at 0200 (Grey hatched area)

Burn Period 1400 - 2000

- August 2nd (Yellow)
- August 3rd (Orange)
- August 4th (Blue)
- Fire History 2001 - 2017 (Green hatched area)

*Assumes no fire suppression



Near Term modeled for four days beginning August 6, 2018 using ignitions for IR intense heat from August 6, 0630 hrs and open line where there was growth in last 24hrs. El Portal RAWS was chosen for weather inputs. A burn period from 1200-2000 was used since there has been active burning well into the night. Decreased the live and dead fuel moistures to represent conditions in fire area Scott and Reinhardt crown fire method was chosen with an increase in spotting due to the reported moderate to long range spotting on the fire and high probability of ignition. Results assume free burning fire, no suppression actions. A barrier was used where firelines exist. Modeled for worst case conditions. Winds were increased for each day to reflect the predicted winds in fire area.

The outputs may not accurately reflect conditions across the entire fire due to varying conditions, varying elevations, widely varying vegetation types and local wind and humidity influence not represented in the model. Results may over-predict fire spread in areas that are under inversion or shaded by smoke column.

Sources: Esri, HERE, DeLorme, Intermap, increment P Corp., GEBCO, USGS, FAO, NPS, NRC, GEBCO, Swisstopo, Mapbox, © OpenStreetMap contributors, and the GIS User Community