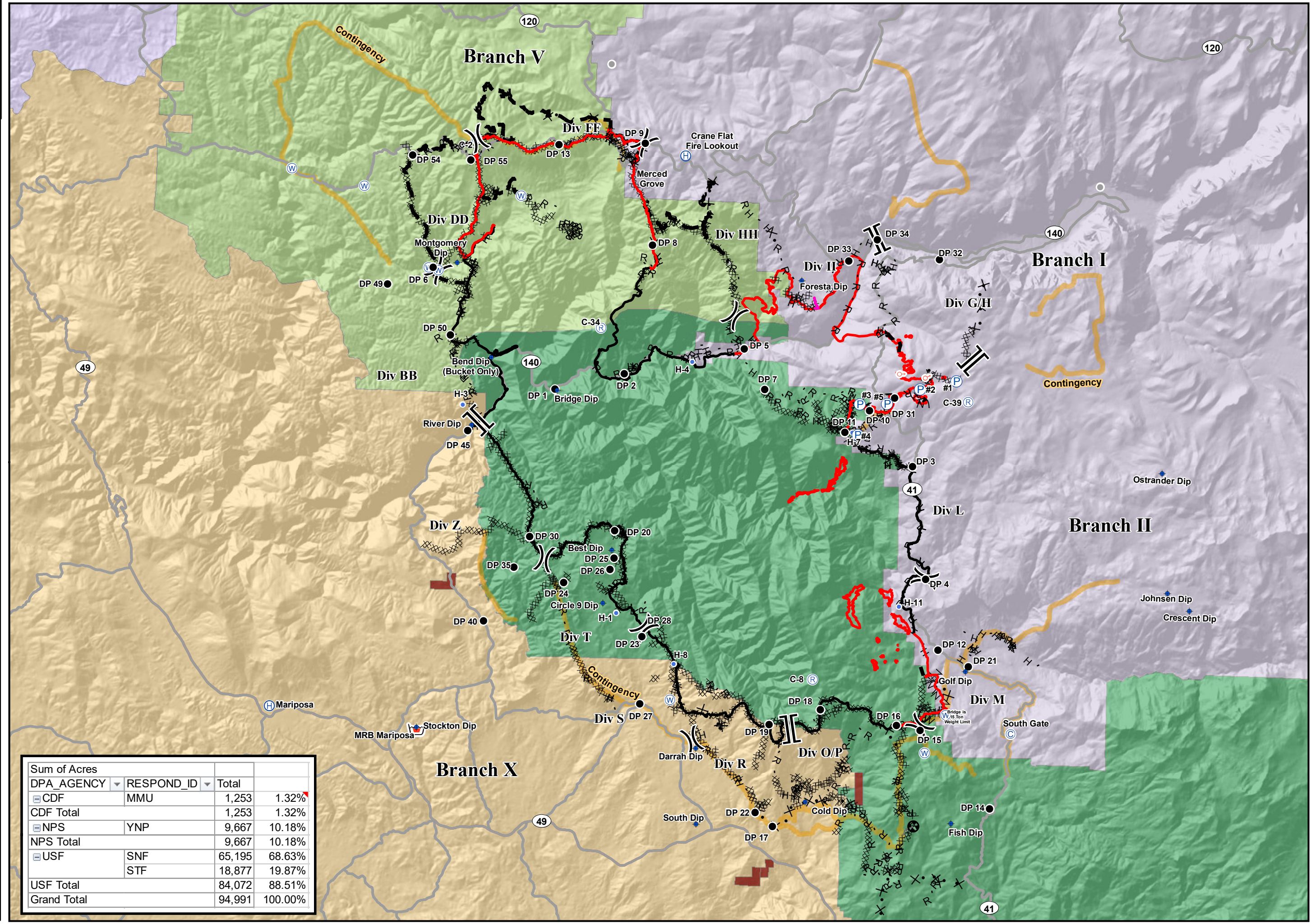


Cost Apportionment
 Ferguson Fire
 CA-SNF-000745
 08/08/2018



- Direct Protection Areas**
- MMU - CDF, MADERA-MARIPOSA-MERCED-MARIPOSA
 - SNF - USFS, SIERRA NF
 - STF - USFS, STANISLAUS NF - SONORA
 - TCU - CDF, TUOLUMNE-CALAVERAS - SAN ANDREAS
 - YNP - NPS, YOSEMITE NP - YOSEMITE NP
 - BIA
- PACE**
- Contingency
 - Camp
 - Dip Site
 - Drop Point
 - Helibase
 - Helispot
 - Pump
 - Repeater
 - Retardant/Mud Pit
 - Spot Fire
 - Water Source
 - Other
 - Division Break
 - Branch Break
 - Uncontrolled Fire Edge
 - Completed Line
 - Completed Dozer Line
 - Completed Hand Line
 - Road as Completed Line
 - Access or Improved Road
 - Proposed Dozer Line
 - Fire Break Planned or Incomplete
 - Planned Fire Line
 - Other
 - Unknown
 - Highways
 - Major Roads 2



Sum of Acres			
DPA_AGENCY	RESPOND_ID	Total	
CDF	MMU	1,253	1.32%
CDF Total		1,253	1.32%
NPS	YNP	9,667	10.18%
NPS Total		9,667	10.18%
USF	SNF	65,195	68.63%
	STF	18,877	19.87%
USF Total		84,072	88.51%
Grand Total		94,991	100.00%

