

# Cost Apportionment

Ferguson Fire

CA-SNF-000745

08/12/2018



### Direct Protection Areas

MMU - CDF, MADERA-MARIPOSA-MERCED - MARIPOSA

SNF - USFS, SIERRA NF

STF - USFS, STANISLAUS NF - SONORA

TCU - CDF, TUOLUMNE-CALAVERAS - SAN ANDREAS

YNP - NPS, YOSEMITE NP - YOSEMITE NP

BIA

### PACE

Contingency

Camp

Dip Site

Drop Point

Helibase

Helispot

Incident Command Post

Repeater

Spot Fire

Staging Area

Water Source

Water Tank

Other

Division Break

Branch Break

Uncontrolled Fire Edge

Completed Line

Completed Dozer Line

Completed Hand Line

Road as Completed Line

Access or Improved Road

Proposed Dozer Line

Fire Break Planned or Incomplete

Planned Fire Line

Other

Highways

Miles

0 1 2 3

N

0 1 2 3

Miles

0 1 2 3

Miles

0 1 2 3

Miles

0 1 2 3

Miles

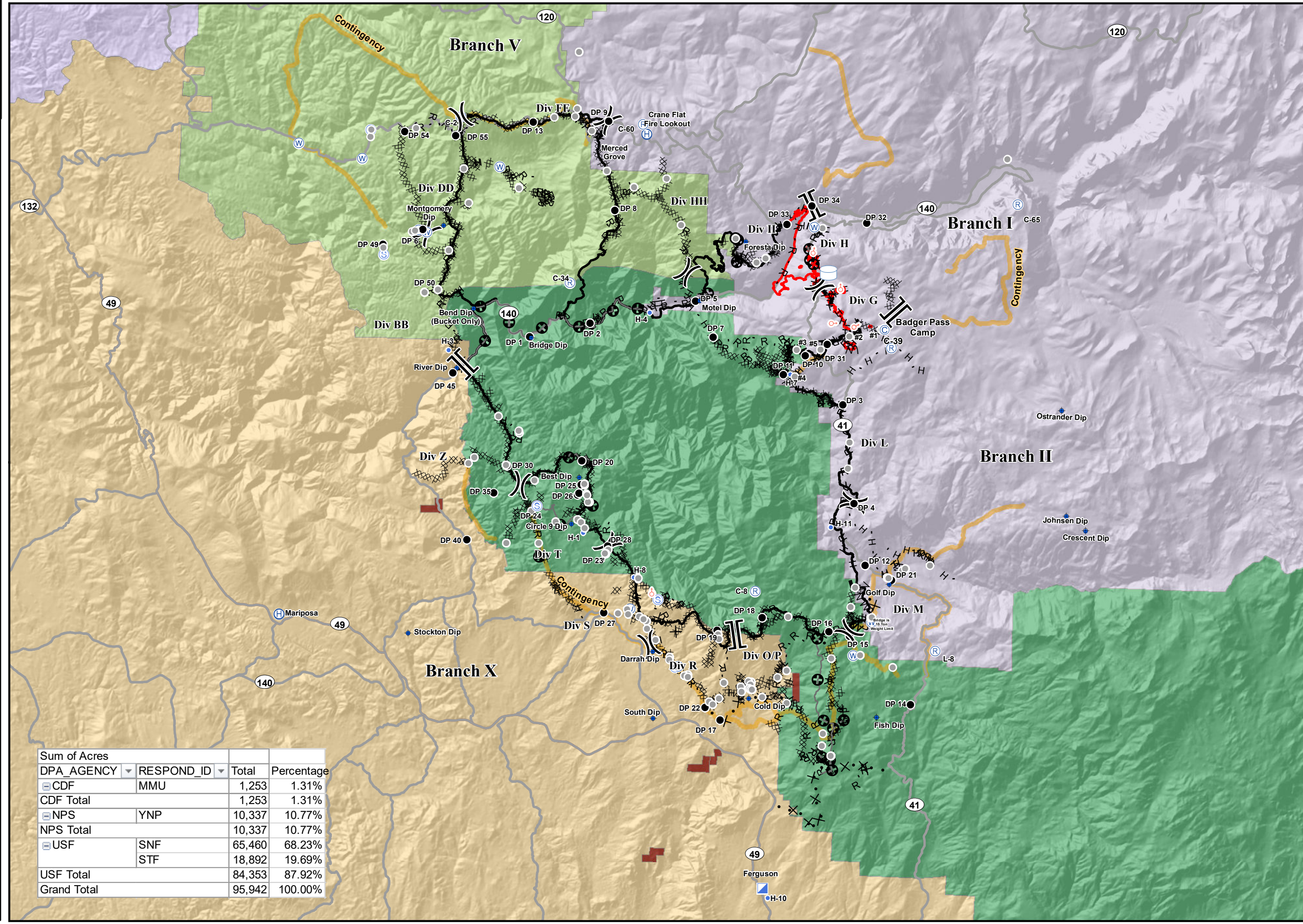
0 1 2 3

Miles

0 1 2 3

Miles

0 1 2 3



Sum of Acres			
DPA_AGENCY	RESPOND_ID	Total	Percentage
CDF	MMU	1,253	1.31%
<b>CDF Total</b>		<b>1,253</b>	<b>1.31%</b>
NPS	YNP	10,337	10.77%
<b>NPS Total</b>		<b>10,337</b>	<b>10.77%</b>
USF	SNF	65,460	68.23%
	STF	18,892	19.69%
<b>USF Total</b>		<b>84,353</b>	<b>87.92%</b>
<b>Grand Total</b>		<b>95,942</b>	<b>100.00%</b>