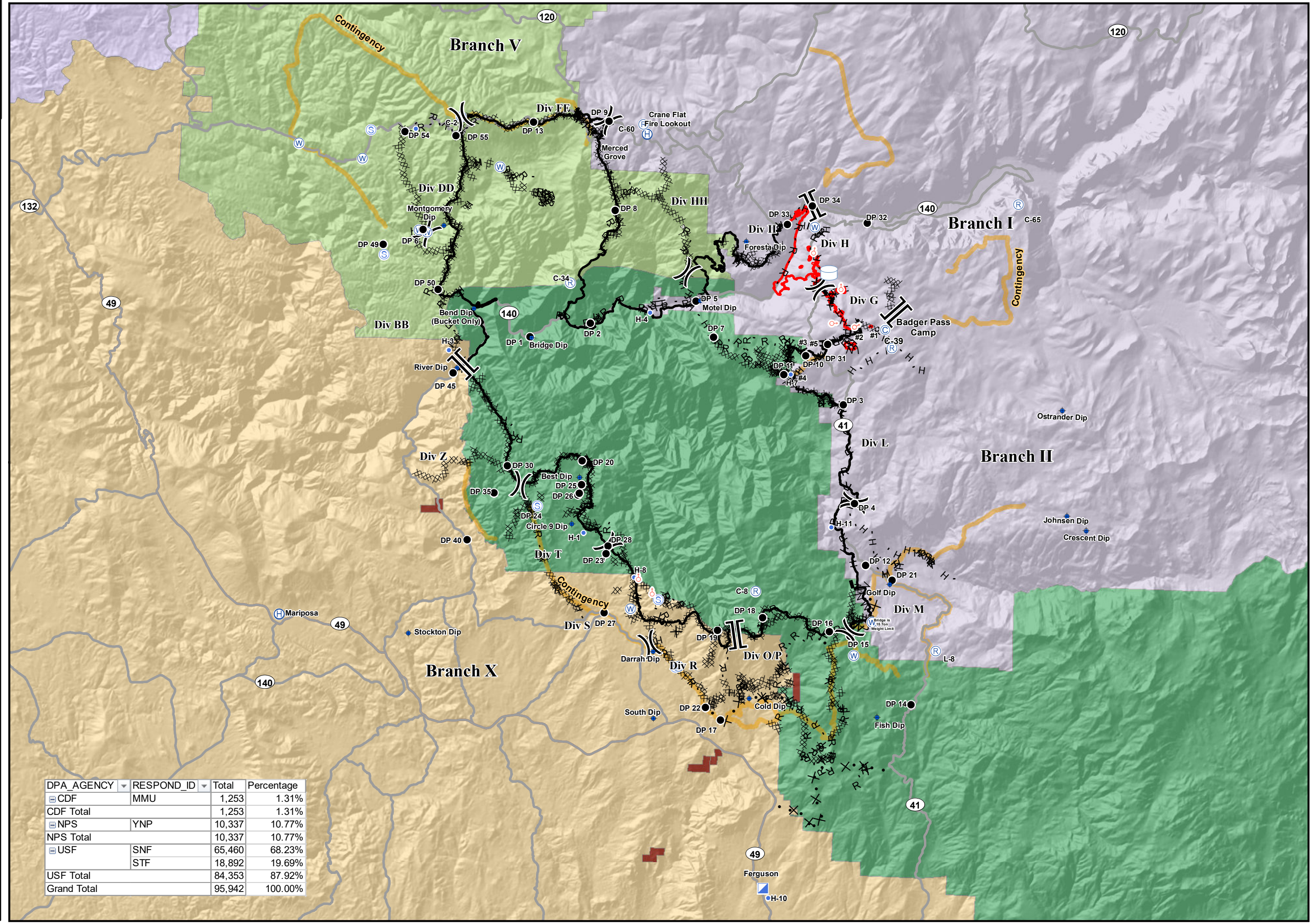
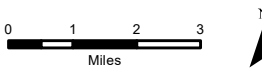


Cost Apportionment
 Ferguson Fire
 CA-SNF-000745
 08/12/2018



- Direct Protection Areas**
- MMU - CDF, MADERA-MARIPOSA-MERCED - MARIPOSA
 - SNF - USFS, SIERRA NF
 - STF - USFS, STANISLAUS NF - SONORA
 - TCU - CDF, TUOLUMNE-CALAVERAS - SAN ANDREAS
 - YNP - NPS, YOSEMITE NP - YOSEMITE NP
 - BIA
- PACE**
- Contingency
 - Camp
 - Dip Site
 - Drop Point
 - Helibase
 - Helispot
 - Incident Command Post
 - Repeater
 - Spot Fire
 - Staging Area
 - Water Source
 - Water Tank
 - Division Break
 - Branch Break
 - Uncontrolled Fire Edge
 - Completed Line
 - Completed Dozer Line
 - Completed Hand Line
 - Road as Completed Line
 - Access or Improved Road
 - Proposed Dozer Line
 - Fire Break Planned or Incomplete
 - Planned Fire Line
 - Highways
 - Major Roads



DPA_AGENCY	RESPOND_ID	Total	Percentage
CDF	MMU	1,253	1.31%
CDF Total		1,253	1.31%
NPS	YNP	10,337	10.77%
NPS Total		10,337	10.77%
USF	SNF	65,460	68.23%
	STF	18,892	19.69%
USF Total		84,353	87.92%
Grand Total		95,942	100.00%