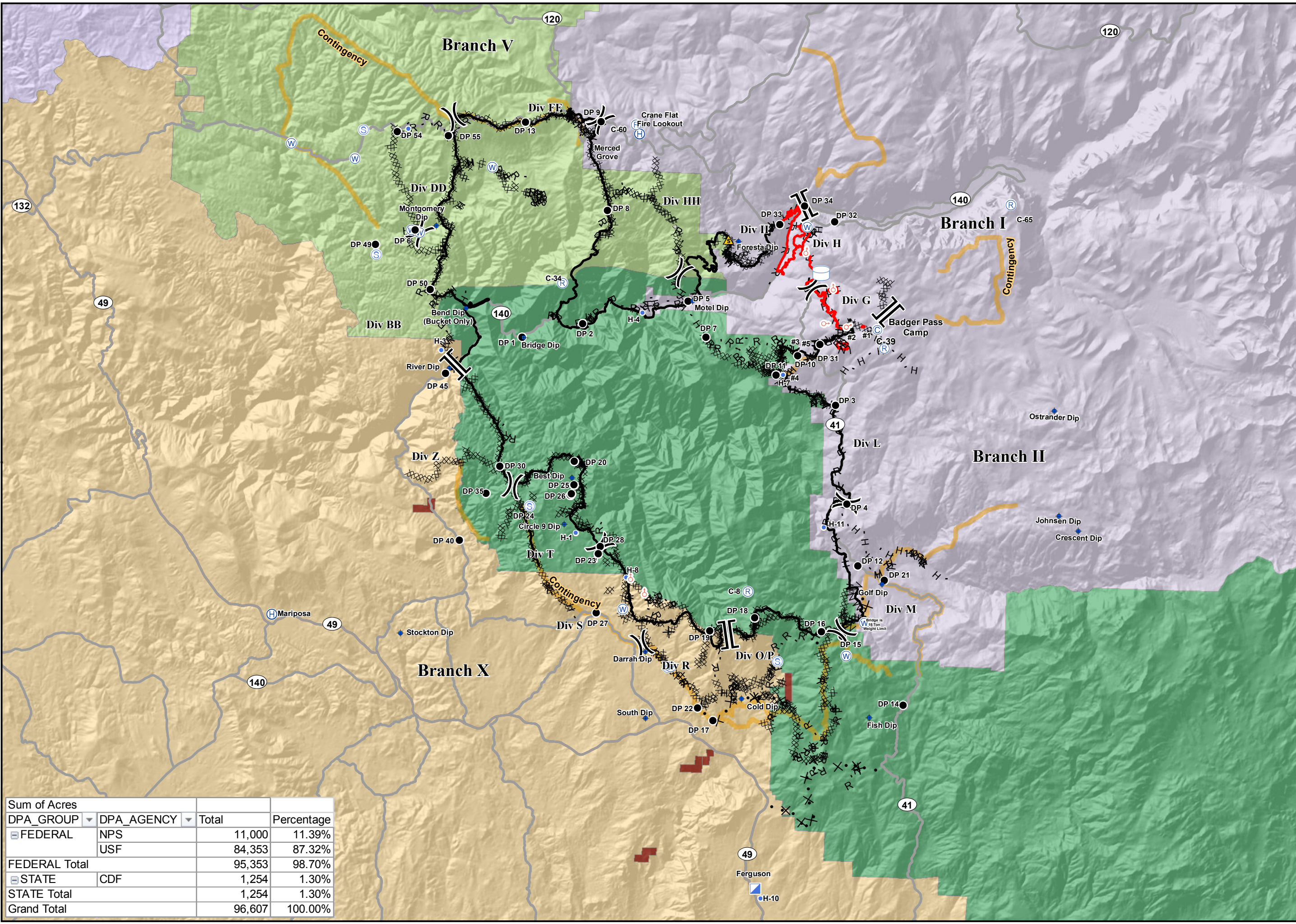
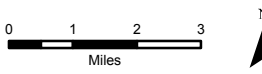


Cost Apportionment
 Ferguson Fire
 CA-SNF-000745
 08/14/2018



- Direct Protection**
- MMU - CDF, MADERA-MARIPOSA-MERCED-MARIPOSA
 - SNF - USFS, SIERRA NF
 - STF - USFS, STANISLAUS NF - SONORA
 - TCU - CDF, TUOLUMNE-CALAVERAS - SAN ANDREAS
 - YNP - NPS, YOSEMITE NP - YOSEMITE NP
 - BIA

- PACE**
- Contingency
 - Camp
 - Dip Site
 - Drop Point
 - Helibase
 - Helispot
 - Incident Command Post
 - Repeater
 - Safety Zone
 - Spot Fire
 - Staging Area
 - Water Source
 - Water Tank
 - Division Break
 - Branch Break
 - Uncontrolled Fire Edge
 - Completed Line
 - Completed Dozer Line
 - Completed Hand Line
 - Road as Completed Line
 - Access or Improved Road
 - Proposed Dozer Line
 - Fire Break Planned or Incomplete
 - Planned Fire Line
 - Highways
 - Major Roads



Sum of Acres			
DPA_GROUP	DPA_AGENCY	Total	Percentage
FEDERAL	NPS	11,000	11.39%
	USF	84,353	87.32%
FEDERAL Total		95,353	98.70%
STATE	CDF	1,254	1.30%
STATE Total		1,254	1.30%
Grand Total		96,607	100.00%