

Cost Apportionment
Ferguson Fire
 CA-SNF-000745
 08/14/2018

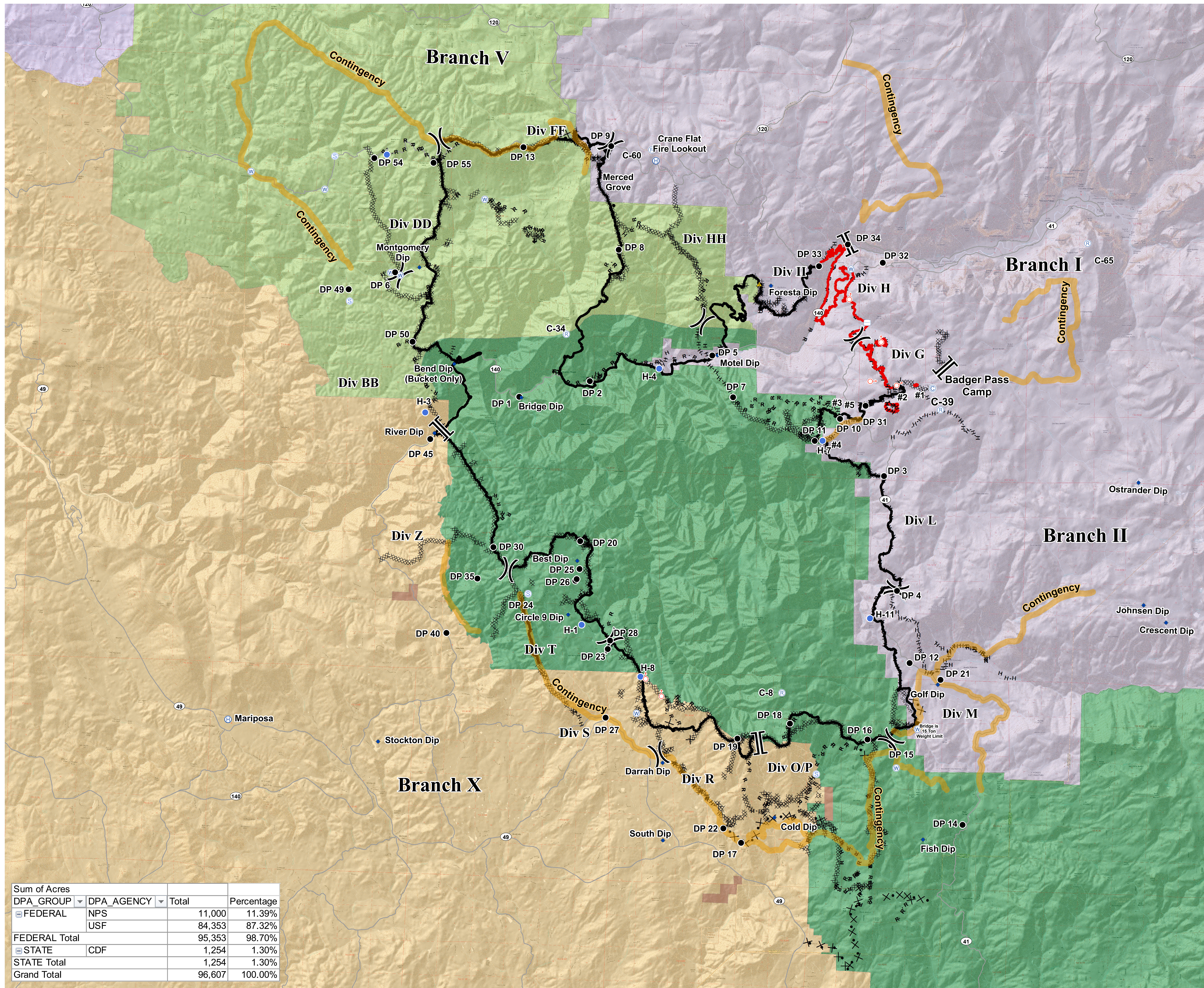


Direct Protection Areas

- MMU - CDF, MADERA-MARIPOSA... - MARIPOSA
- SNF - USFS, SIERRA NF
- STF - USFS, STANISLAUS NF - SONORA
- TCU - CDF, TUOLUMNE-CALAVE... - SAN ANDREAS
- YNP - NPS, YOSEMITE NP - YOSEMITE NP
- BUREAU OF INDIAN AFFAIRS

PACE

- Contingency
- Camp
- Dip Site
- Drop Point
- Helibase
- Helispot
- Repeater
- Safety Zone
- Spot Fire
- Staging Area
- Water Source
- Water Tank
- Division Break
- Branch Break
- Uncontrolled Fire Edge
- Completed Line
- Completed Dozer Line
- Completed Hand Line
- Road as Completed Line
- Access or Improved Road
- Proposed Dozer Line
- Fire Break Planned or Incomplete
- Planned Fire Line
- Highways
- Major Roads



Sum of Acres			
DPA_GROUP	DPA_AGENCY	Total	Percentage
FEDERAL	NPS	11,000	11.39%
	USF	84,353	87.32%
FEDERAL Total		95,353	98.70%
STATE	CDF	1,254	1.30%
STATE Total		1,254	1.30%
Grand Total		96,607	100.00%

N



0 1 2 3
Miles