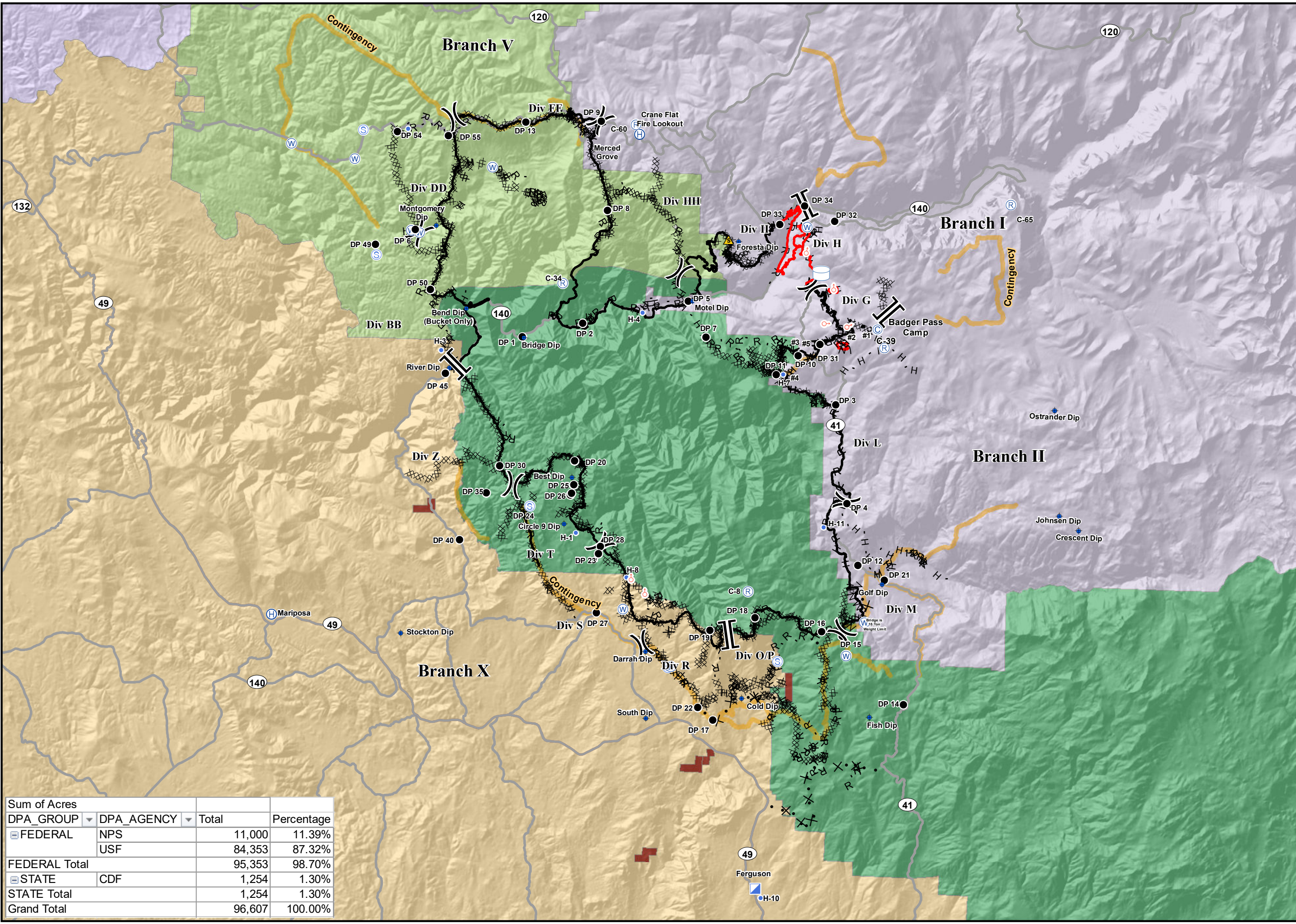
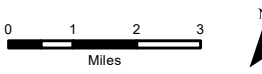


**Cost Apportionment**  
 Ferguson Fire  
 CA-SNF-000745  
 08/14/2018



- Direct Protection Areas**
- MMU - CDF, MADERA-MARIPOSA-MERCED-MARIPOSA
  - SNF - USFS, SIERRA NF
  - STF - USFS, STANISLAUS NF - SONORA
  - TCU - CDF, TUOLUMNE-CALAVERAS - SAN ANDREAS
  - YNP - NPS, YOSEMITE NP - YOSEMITE NP
  - BIA

- PACE**
- Contingency
  - Camp
  - Dip Site
  - Drop Point
  - Helibase
  - Helispot
  - Incident Command Post
  - Repeater
  - Safety Zone
  - Spot Fire
  - Staging Area
  - Water Source
  - Water Tank
  - Division Break
  - Branch Break
  - Uncontrolled Fire Edge
  - Completed Line
  - Completed Dozer Line
  - Completed Hand Line
  - Road as Completed Line
  - Access or Improved Road
  - Proposed Dozer Line
  - Fire Break Planned or Incomplete
  - Planned Fire Line
  - Highways
  - Major Roads



Sum of Acres			
DPA_GROUP	DPA_AGENCY	Total	Percentage
FEDERAL	NPS	11,000	11.39%
	USF	84,353	87.32%
<b>FEDERAL Total</b>		<b>95,353</b>	<b>98.70%</b>
STATE	CDF	1,254	1.30%
<b>STATE Total</b>		<b>1,254</b>	<b>1.30%</b>
<b>Grand Total</b>		<b>96,607</b>	<b>100.00%</b>