

**Cost Apportionment**  
**Ferguson Fire**  
 CA-SNF-000745  
 08/15/2018

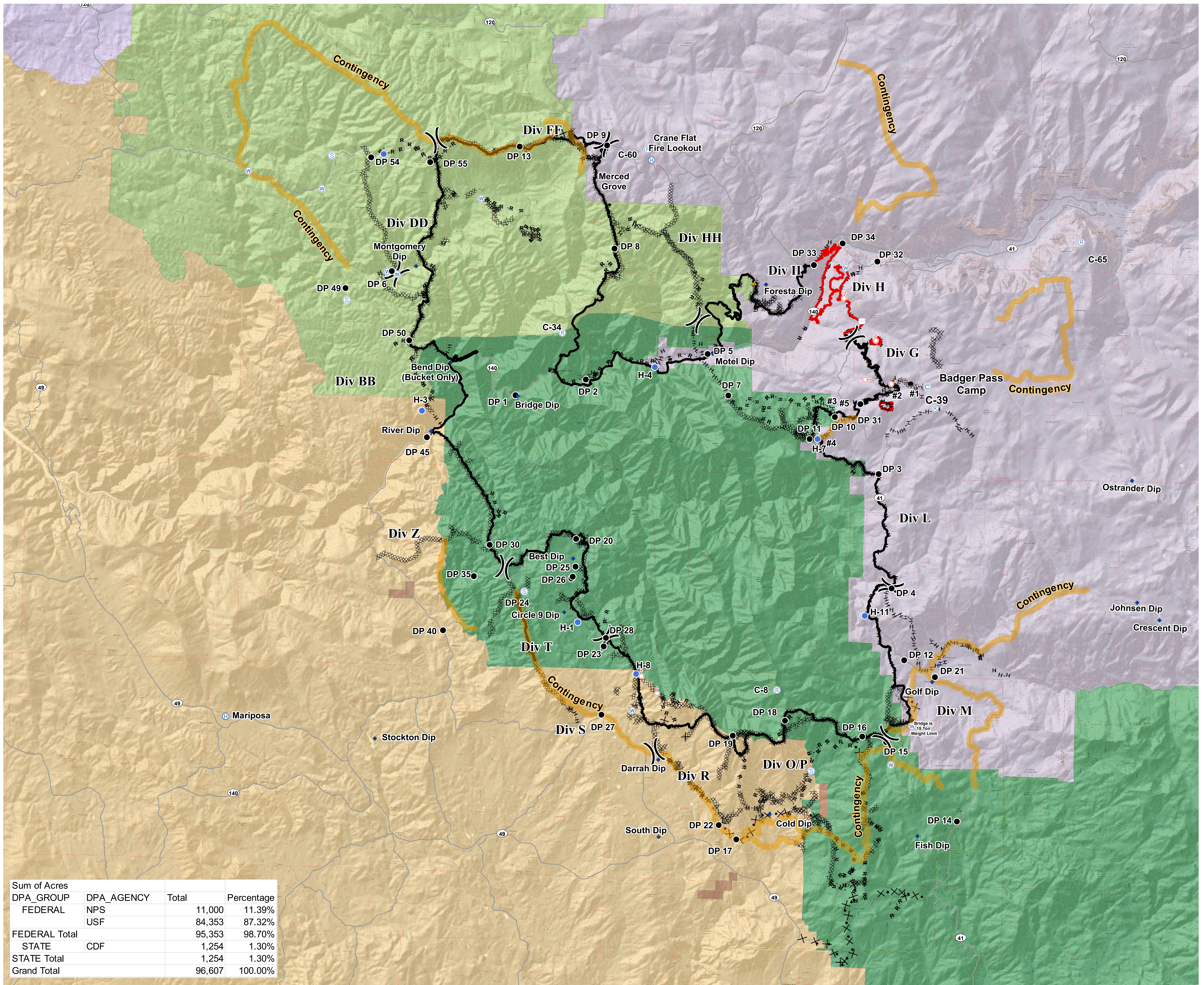


**Direct Protection Areas**

- MMU - CDF, MADERA-MARIPOSA... - MARIPOSA
- SNF - USFS, SIERRA NF
- STF - USFS, STANISLAUS NF - SONORA
- TCU - CDF, TUOLUMNE-CALAVE... - SAN ANDREAS
- YNP - NPS, YOSEMITE NP - YOSEMITE NP
- BUREAU OF INDIAN AFFAIRS

**PACE**

- Contingency
- Camp
- Dip Site
- Drop Point
- Helibase
- Helispot
- Repeater
- Safety Zone
- Spot Fire
- Staging Area
- Water Source
- Water Tank
- Division Break
- Uncontrolled Fire Edge
- Completed Line
- Completed Dozer Line
- Completed Hand Line
- Road as Completed Line
- Access or Improved Road
- Proposed Dozer Line
- Fire Break Planned or Incomplete
- Planned Fire Line
- Highways
- Major Roads



Sum of Acres				
DPA_GROUP	DPA_AGENCY	Total	Percentage	
FEDERAL	NPS	11,000	11.39%	
	USF	84,353	87.32%	
FEDERAL Total		95,353	98.70%	
STATE	CDF	1,254	1.30%	
STATE Total		1,254	1.30%	
Grand Total		96,607	100.00%	

