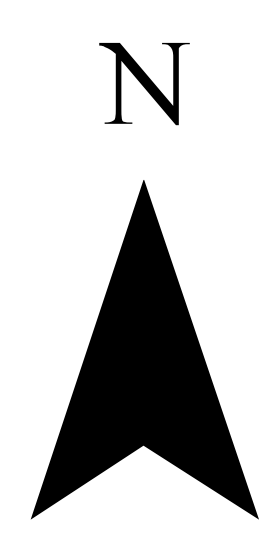


# Donnell Fire

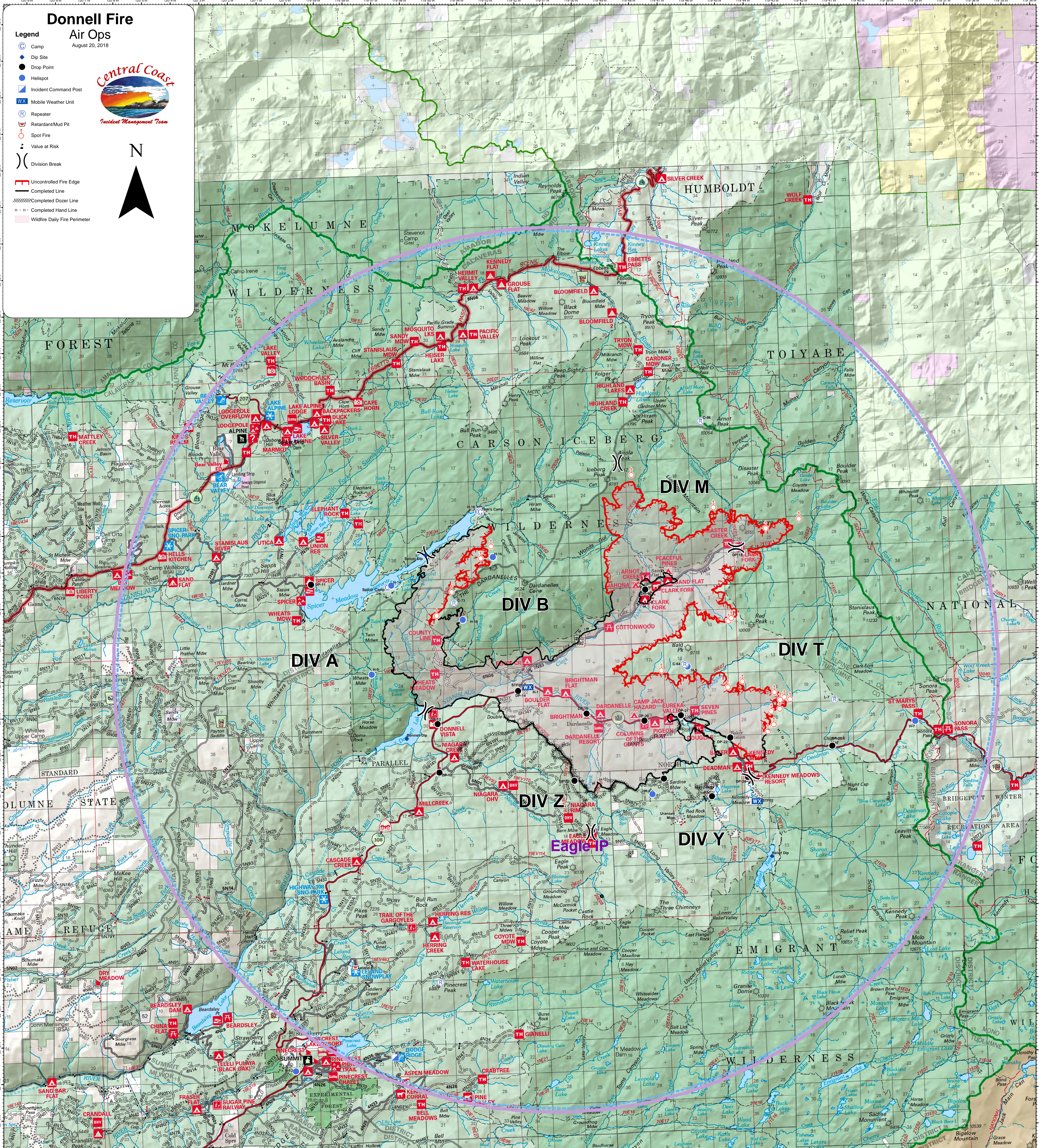
## Air Ops

August 20, 2018

- Legend**
- Camp
  - + Dip Site
  - Drop Point
  - Helispot
  - Incident Command Post
  - ✈ Mobile Weather Unit
  - ⊕ Repeater
  - ⊕ Retardant/Mud Pit
  - Spot Fire
  - + Value at Risk
  - ) Division Break



- Uncontrolled Fire Edge
- Completed Line
- - - Completed Dozer Line
- - - Completed Hand Line
- Wildfire Daily Fire Perimeter



Label	Latitude	Longitude	Type
H-1	38° 21.42	119° 52.23	OGE/ Type 2/ 5,800'
H-4	38° 18.353	119° 048.117	OGE/ Type 2/ 8,000'
H-5	38° 21.830	119° 46.755	OGE/ Type 2/ 9,000'
H-7	38° 20.125	119° 38.913	IGE/ Type 2/ 9,000'
H-9	38° 21.90	119° 57.740	OGE/ Type 2
H-10 Tom's Spike Camp	38° 26.265	119° 53.852	IGE/ Type 2/ 6,700'
H-12	38° 11.111	120° 0.816	ICP/ OGE/ Type 2/ 5,500'
H-14 Spicer Spike Camp	38° 24.32	119° 56.958	OGE/Type 2, & 3/ Hazards: Snags/7,180'
H-16	38° 25.008	119° 53.392	OGE/Type 2/Hazards: Snags/7,700'
H-18	38° 23.318	119° 54.510	OGE/Type 2/7,300'
Donnell Lake Dip	38° 20.116	119° 56.594	
Relief Dip	38° 16.563	119° 44.055	
Spicer Dip	38° 25.122	119° 55.726	
Eagle IP	38° 16.804	119° 51.140	
Bald Mountain	38° 8.394	120° 5.679	

