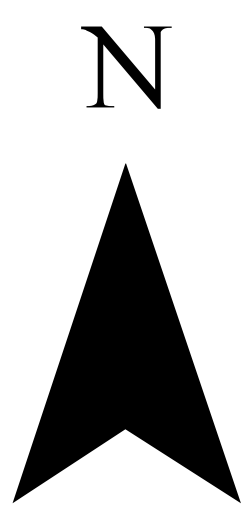


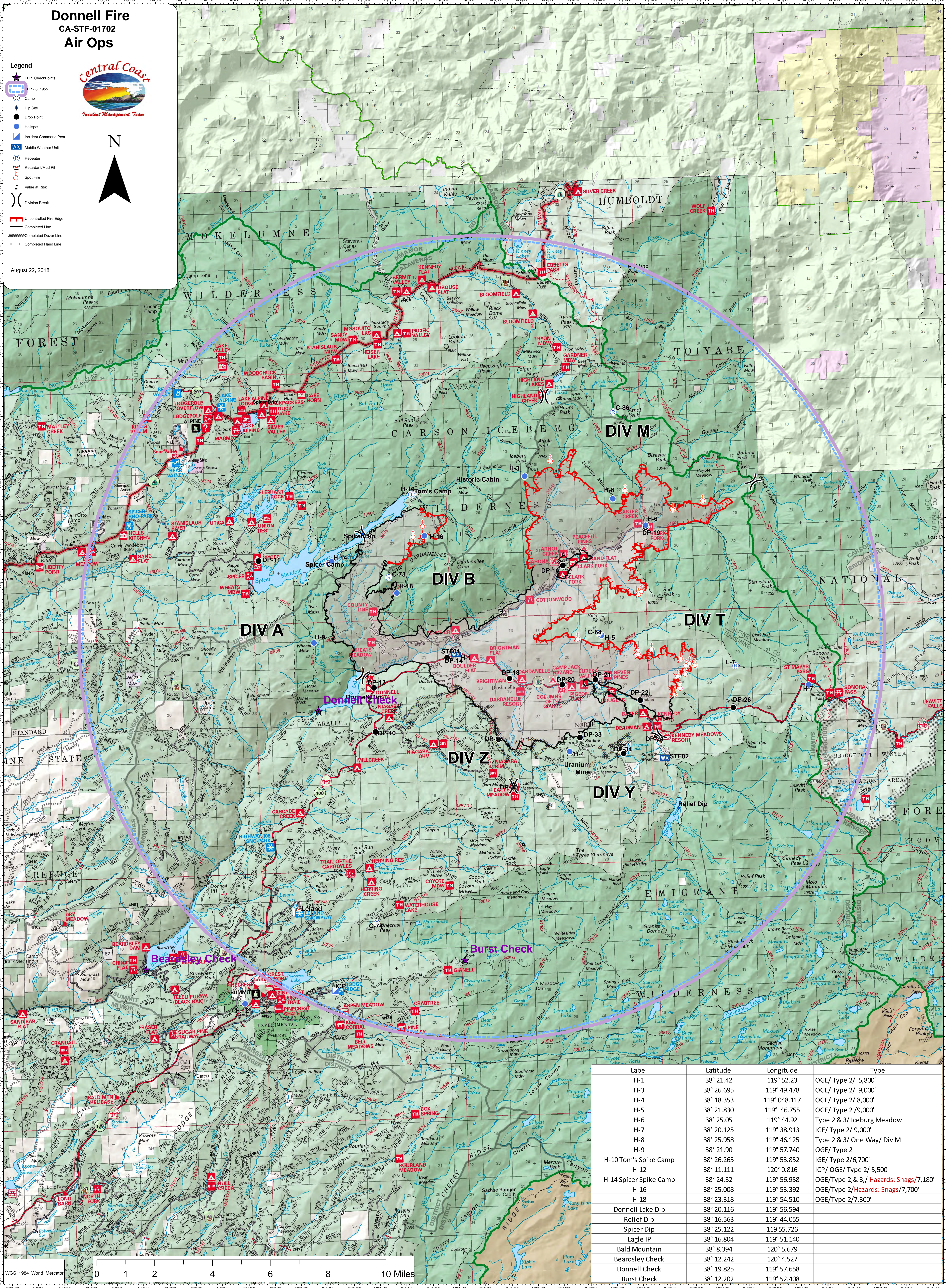
Donnell Fire
CA-STF-01702
Air Ops



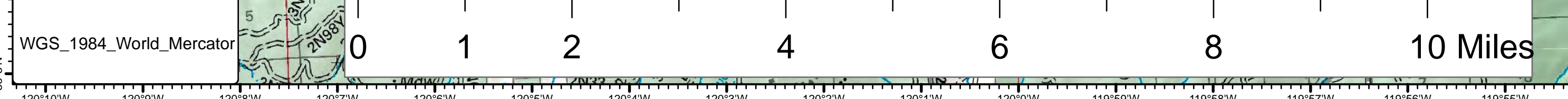
- Legend**
- TFR CheckPoints
 - TFR - 8,1965
 - Camp
 - Dip Site
 - Drop Point
 - Helispot
 - Incident Command Post
 - Mobile Weather Unit
 - Repeater
 - Retardant/Mud Pit
 - Spot Fire
 - Value at Risk
 - Division Break
 - Uncontrolled Fire Edge
 - Completed Line
 - Completed Dozer Line
 - H - H - Completed Hand Line



August 22, 2018



Label	Latitude	Longitude	Type
H-1	38° 21.42	119° 52.23	OGE/ Type 2/ 5,800'
H-3	38° 26.695	119° 49.478	OGE/ Type 2/ 9,000'
H-4	38° 18.353	119° 048.117	OGE/ Type 2/ 8,000'
H-5	38° 21.830	119° 46.755	OGE/ Type 2/ 9,000'
H-6	38° 25.05	119° 44.92	Type 2 & 3/ Iceberg Meadow
H-7	38° 20.125	119° 38.913	IGE/ Type 2/ 9,000'
H-8	38° 25.958	119° 46.125	Type 2 & 3/ One Way/ Div M
H-9	38° 21.90	119° 57.740	OGE/ Type 2
H-10 Tom's Spike Camp	38° 26.265	119° 53.852	IGE/ Type 2/ 6,700'
H-12	38° 11.111	120° 0.816	ICP/ OGE/ Type 2/ 5,500'
H-14 Spicer Spike Camp	38° 24.32	119° 56.958	OGE/ Type 2, & 3/ Hazards: Snags/ 7,180'
H-16	38° 25.008	119° 53.392	OGE/ Type 2/ Hazards: Snags/ 7,700'
H-18	38° 23.318	119° 54.510	OGE/ Type 2/ 7,300'
Donnell Lake Dip	38° 20.116	119° 56.594	
Relief Dip	38° 16.563	119° 44.055	
Spicer Dip	38° 25.122	119° 55.726	
Eagle IP	38° 16.804	119° 51.140	
Bald Mountain	38° 8.394	120° 5.679	
Beardsley Check	38° 12.242	120° 4.527	
Donnell Check	38° 19.825	119° 57.658	
Burst Check	38° 12.202	119° 52.408	



WGS_1984_World_Mercator