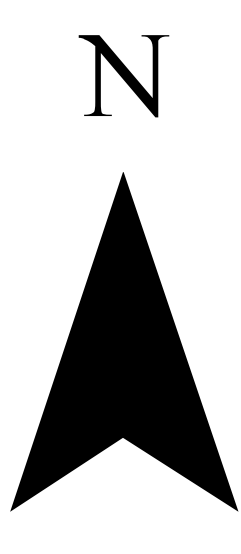
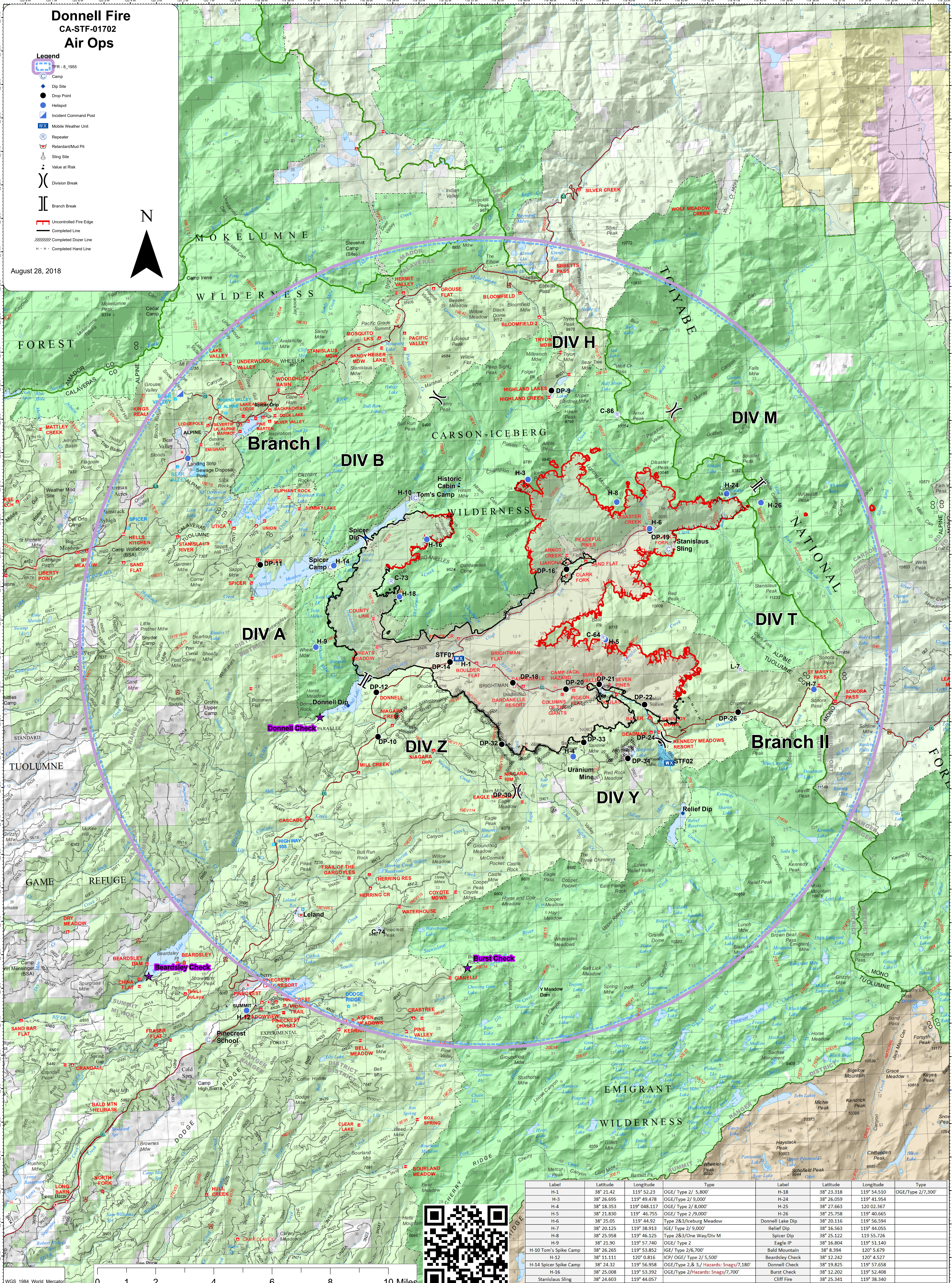


# Donnell Fire CA-STF-01702 Air Ops

- Legend**
- IFR - 8, 1955
  - Camp
  - Dip Site
  - Drop Point
  - Helispot
  - Incident Command Post
  - Mobile Weather Unit
  - Repeater
  - Retardant/Mud Pit
  - Sling Site
  - Value at Risk
  - Division Break
  - Branch Break
  - Uncontrolled Fire Edge
  - Completed Line
  - Completed Dozer Line
  - Completed Hand Line



August 28, 2018



Label	Latitude	Longitude	Type	Label	Latitude	Longitude	Type
H-1	38° 21.42	119° 52.23	OGE/Type 2/ 5,800'	H-18	38° 23.318	119° 54.510	OGE/Type 2/7,300'
H-3	38° 26.695	119° 49.478	OGE/Type 2/ 9,000'	H-24	38° 26.059	119° 41.954	
H-4	38° 18.353	119° 048.117	OGE/Type 2/ 8,000'	H-25	38° 27.663	120 02.367	
H-5	38° 21.830	119° 46.755	OGE/Type 2/9,000'	H-26	38° 25.758	119° 50.659	
H-6	38° 25.05	119° 44.92	Type 2&3/Iceberg Meadow	Donnell Lake Dip	38° 20.116	119° 46.594	
H-7	38° 20.125	119° 38.913	IGE/Type 2/ 9,000'	Relief Dip	38° 16.563	119° 44.055	
H-8	38° 25.958	119° 46.125	Type 2&3/One Way/Div M	Spicer Dip	38° 25.122	119° 55.726	
H-9	38° 21.90	119° 57.740	OGE/Type 2	Eagle IP	38° 16.804	119° 51.140	
H-10 Tom's Spike Camp	38° 26.265	119° 53.852	IGE/Type 2/6,700'	Bald Mountain	38° 19.825	119° 57.658	
H-12	38° 11.111	120° 0.816	ICP/ OGE/ Type 2/ 5,500'	Beardsley Check	38° 12.242	120° 4.527	
H-14 Spicer Spike Camp	38° 24.32	119° 56.958	OGE/Type 2 & 3/ Hazards: Snags/7,180'	Donnell Check	38° 19.825	119° 57.658	
H-16	38° 25.008	119° 53.392	OGE/Type 2/Hazards: Snags/7,700'	Burst Check	38° 12.202	119° 52.408	
Stanislaus Sling	38° 24.603	119° 44.057		Cliff Fire	38° 25.341	119° 38.340	
				Silver King	38° 25.541	119° 36.658	



WGS\_1984\_World\_Mercator

0 1 2 4 6 8 10 Miles