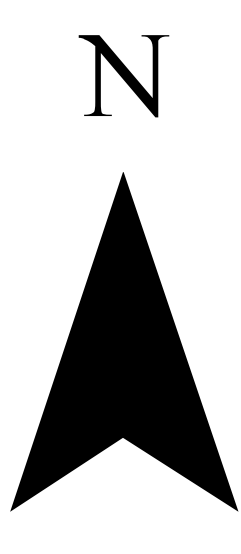
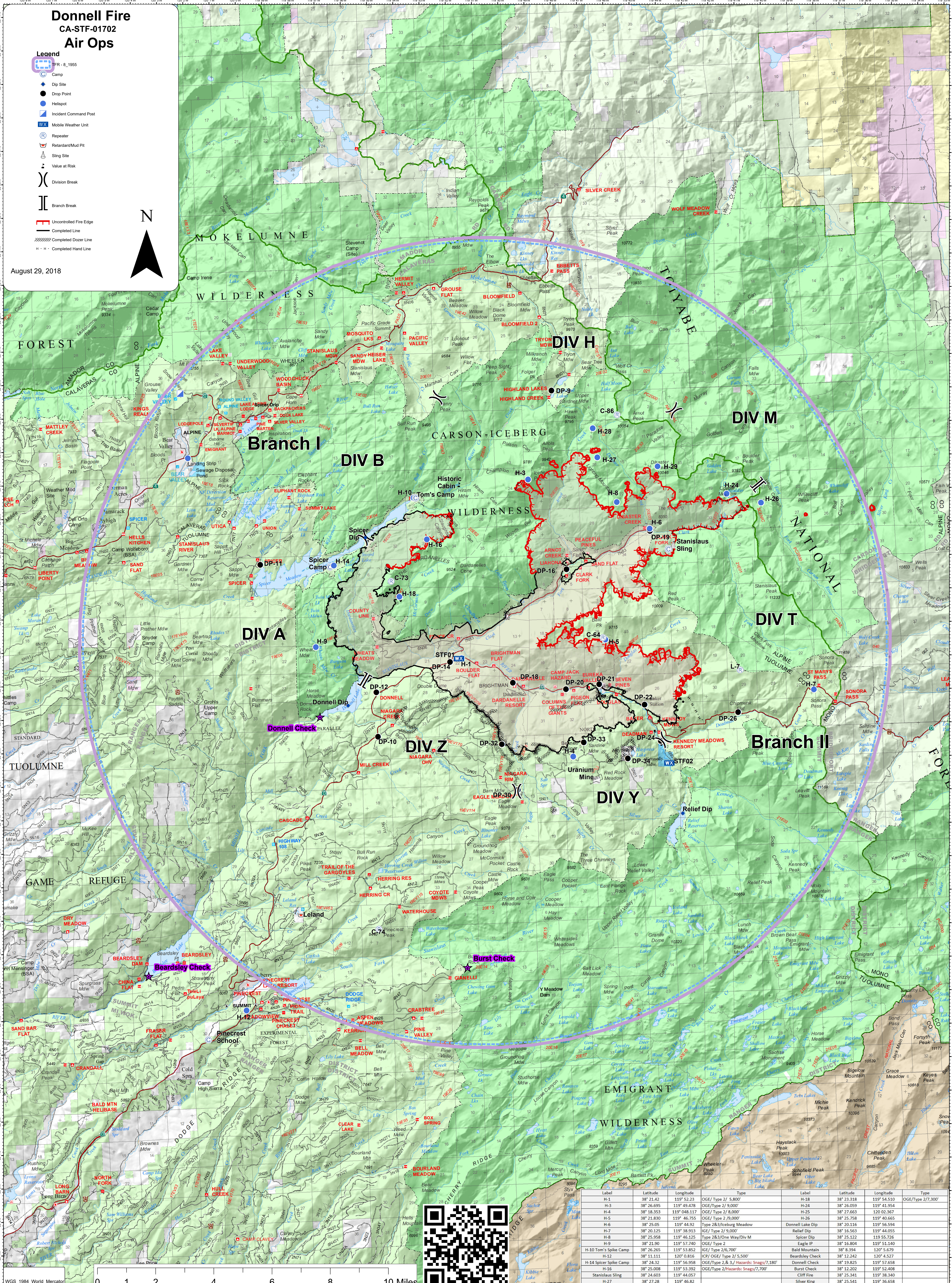


Donnell Fire CA-STF-01702 Air Ops

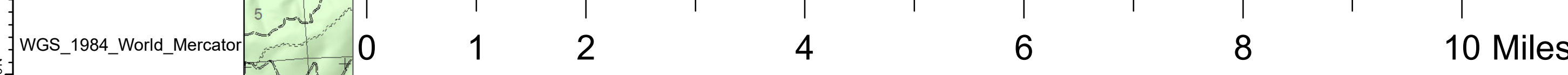
- Legend**
- IFR - 8, 1955
 - Dip Site
 - Drop Point
 - Helispot
 - Incident Command Post
 - Mobile Weather Unit
 - Repeater
 - Retardant/Mud Pit
 - Sling Site
 - Value at Risk
 - Division Break
 - Branch Break
 - Uncontrolled Fire Edge
 - Completed Line
 - Completed Dozer Line
 - Completed Hand Line



August 29, 2018



Label	Latitude	Longitude	Type	Label	Latitude	Longitude	Type
H-3	38° 21.42'	119° 52.23'	OGE/Type 2/ 5,800'	H-19	38° 23.318'	119° 54.510'	OGE/Type 2/7,900'
H-4	38° 18.353'	119° 04.817'	OGE/Type 2/ 9,000'	H-24	38° 26.059'	119° 41.954'	
H-5	38° 21.830'	119° 46.755'	OGE/Type 2/ 8,000'	H-25	38° 27.663'	120° 02.367'	
H-6	38° 25.05'	119° 44.92'	OGE/Type 2/ 9,000'	H-26	38° 25.758'	119° 40.665'	
H-7	38° 20.125'	119° 38.913'	IGE/Type 2/ 9,000'	Donnell Lake Dip	38° 20.116'	119° 56.594'	
H-8	38° 25.958'	119° 46.125'	Type 283/One Way/Div M	Spicer Dip	38° 25.122'	119° 55.726'	
H-9	38° 21.990'	119° 57.740'	OGE/Type 2	Eagle IP	38° 16.894'	119° 51.140'	
H-10 Tom's Spike Camp	38° 26.265'	119° 53.852'	IGE/Type 2/6,700'	Bald Mountain	38° 8.394'	120° 5.679'	
H-12	38° 11.111'	120° 0.816'	ICP/OGE/Type 2/ 5,500'	Beardsley Check	38° 12.242'	120° 4.527'	
H-14 Spicer Spike Camp	38° 24.32'	119° 56.958'	OGE/Type 2, 8, 3, Hazards: Snags/7,180'	Donnell Check	38° 19.825'	119° 57.658'	
H-16	38° 25.008'	119° 53.392'	OGE/Type 2/Hazards: Snags/7,700'	Burst Check	38° 12.202'	119° 52.408'	
Stanislaus Sling	38° 24.603'	119° 44.057'		Cliff Fire	38° 25.341'	119° 38.340'	
H-27	38° 27.28'	119° 46.82'		Silver King	38° 25.541'	119° 36.658'	
H-28	38° 28.16'	119° 46.35'		H-29	38° 28.16'	119° 44.54'	



WGS_1984_World_Mercator