








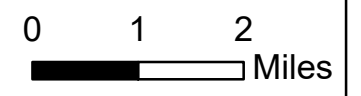
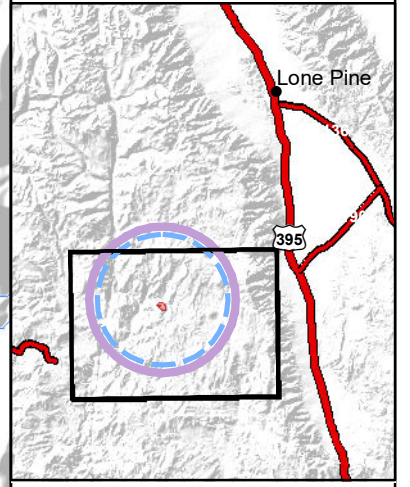
Jordan Fire
CA-INF-000903

AIR OPS

June 14 2019 0600 DAY

approx 435 acres
Jun 13 2019 2326

-  Structures
-  Dip Site
-  Helispot
-  Sling Site
-  Division Break
-  Fire Perimeter
-  TFR 9_3834



NAD 1983 UTM Zone 11N
Projection: Transverse Mercator
Datum: North American 1983

Label	Latitude	Longitude	Elevation
Blackrock	36° 5.513'	-118° 15.617'	8,100'
Cargo	36° 35.643'	-118° 11.011'	5,800'
H1	36° 13.800'	-118° 18.220'	6,400'
H2	36° 13.650'	-118° 20.400'	5,700'
H3	36° 13.310'	-118° 19.064'	7,639'
H6	36° 13.340'	-118° 17.892'	6,900'
Kern Flat Dip (Longline)	36° 10.620'	-118° 22.342'	5,000'
Kern Peak	36° 18.510'	-118° 17.240'	11,500'
Lone Pine Airport	36° 35.422'	-118° 3.427'	3,700'
Lone Pine Hospital	36° 36.577'	-118° 3.462'	3,700'
Olancha Peak	36° 15.910'	-118° 7.095'	12,600'
Rodeo	36° 3.415'	-118° 15.617'	8,520'
Yankee Sling	36° 12.808'	-118° 18.850'	8,620'