

# Jordan Fire

CA-INF-000903

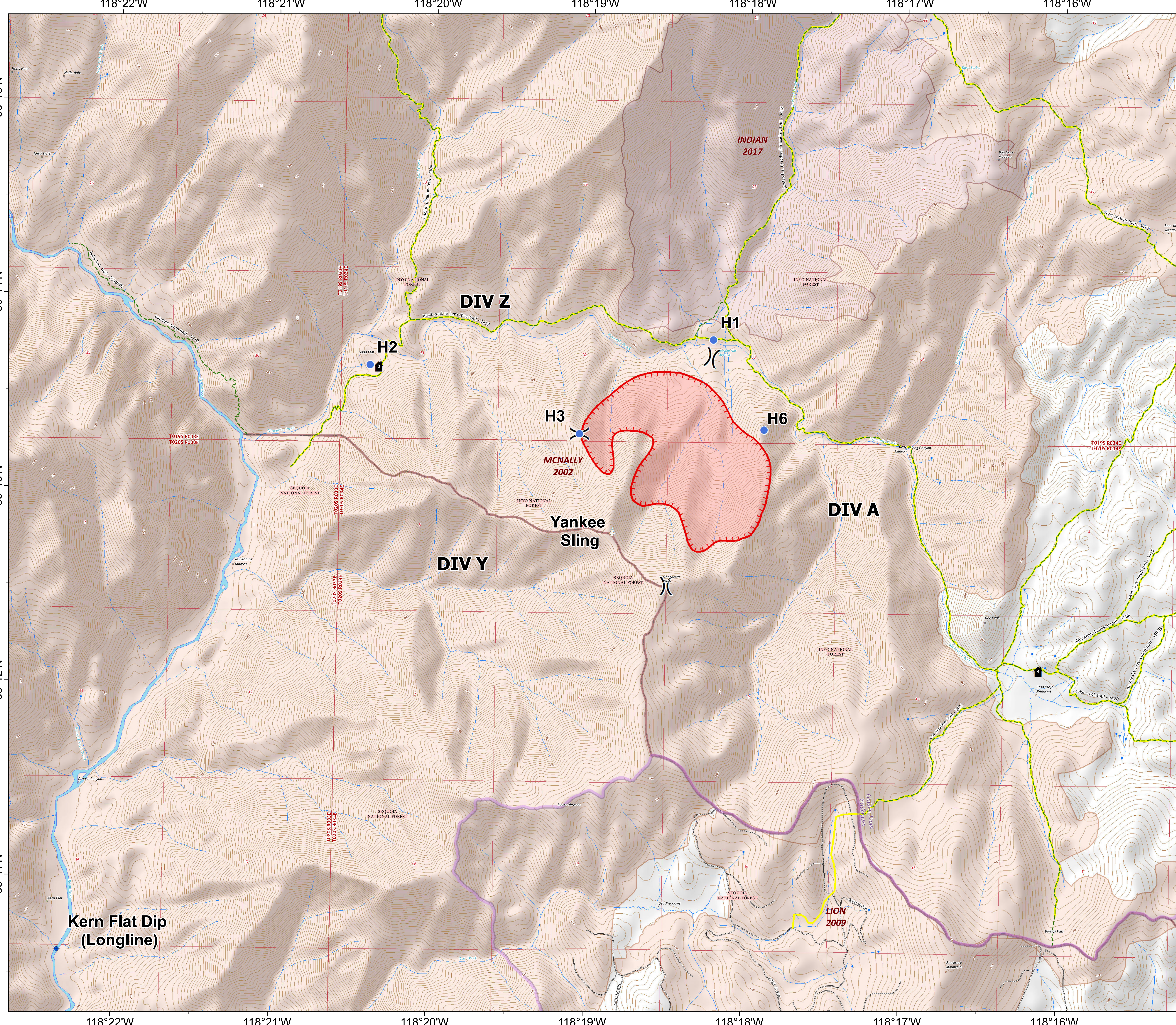
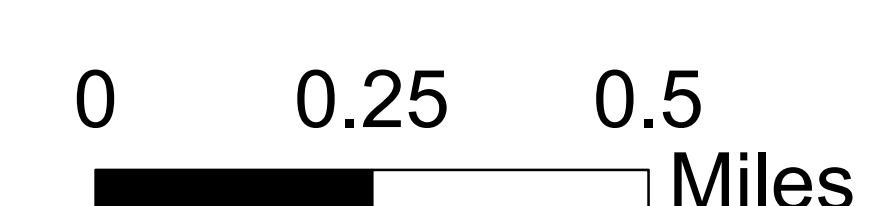
## OPERATIONS

June 14 2019 0600 DAY

approx 435 acres  
Jun 13 2019 1813

-  Dip Site
-  Helispot
-  Sling Site
-  Division Break
-  Uncontrolled Fire Edge
-  Fire Perimeter
-  Wilderness Area
-  Trails
-  Trail Closure
-  Structures
- Fire History**
-  2011 - 2017
-  2001 - 2010

Label	Latitude	Longitude	Elevation
Blackrock	36° 5.513'	-118° 15.617'	8,100'
Cargo	36° 35.643'	-118° 11.011'	5,800'
H1	36° 13.800'	-118° 18.220'	6,400'
H2	36° 13.650'	-118° 20.400'	5,700'
H3	36° 13.310'	-118° 19.064'	7,639'
H6	36° 13.340'	-118° 17.892'	6,900'
Kern Flat Dip (Longline)	36° 10.620'	-118° 22.342'	5,000'
Kern Peak	36° 18.510'	-118° 17.240'	11,500'
Lone Pine Airport	36° 35.422'	-118° 3.427'	3,700'
Lone Pine Hospital	36° 36.577'	-118° 3.462'	3,700'
Olancha Peak	36° 15.910'	-118° 7.095'	12,600'
Rodeo	36° 3.415'	-118° 15.617'	8,520'
Yankee Sling	36° 12.808'	-118° 18.850'	8,620'



**Kern Flat Dip  
(Longline)**

**LION  
2009**

**DIV Z**

**DIV A**

**DIV Y**

**Yankee  
Sling**

**MCNALLY  
2002**

**INDIAN  
2017**

**H2**

**H1**

**H3**

**H6**

118°22'W

118°21'W

118°20'W

118°19'W

118°18'W

118°17'W

118°16'W

36°15'N

36°14'N

36°13'N

36°12'N

36°11'N

118°22'W

118°21'W

118°20'W

118°19'W

118°18'W

118°17'W

118°16'W