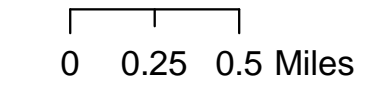


**IAP**  
**Cow Fire**  
**CA-INF-1435**  
**08/26/2019 Day Shift**

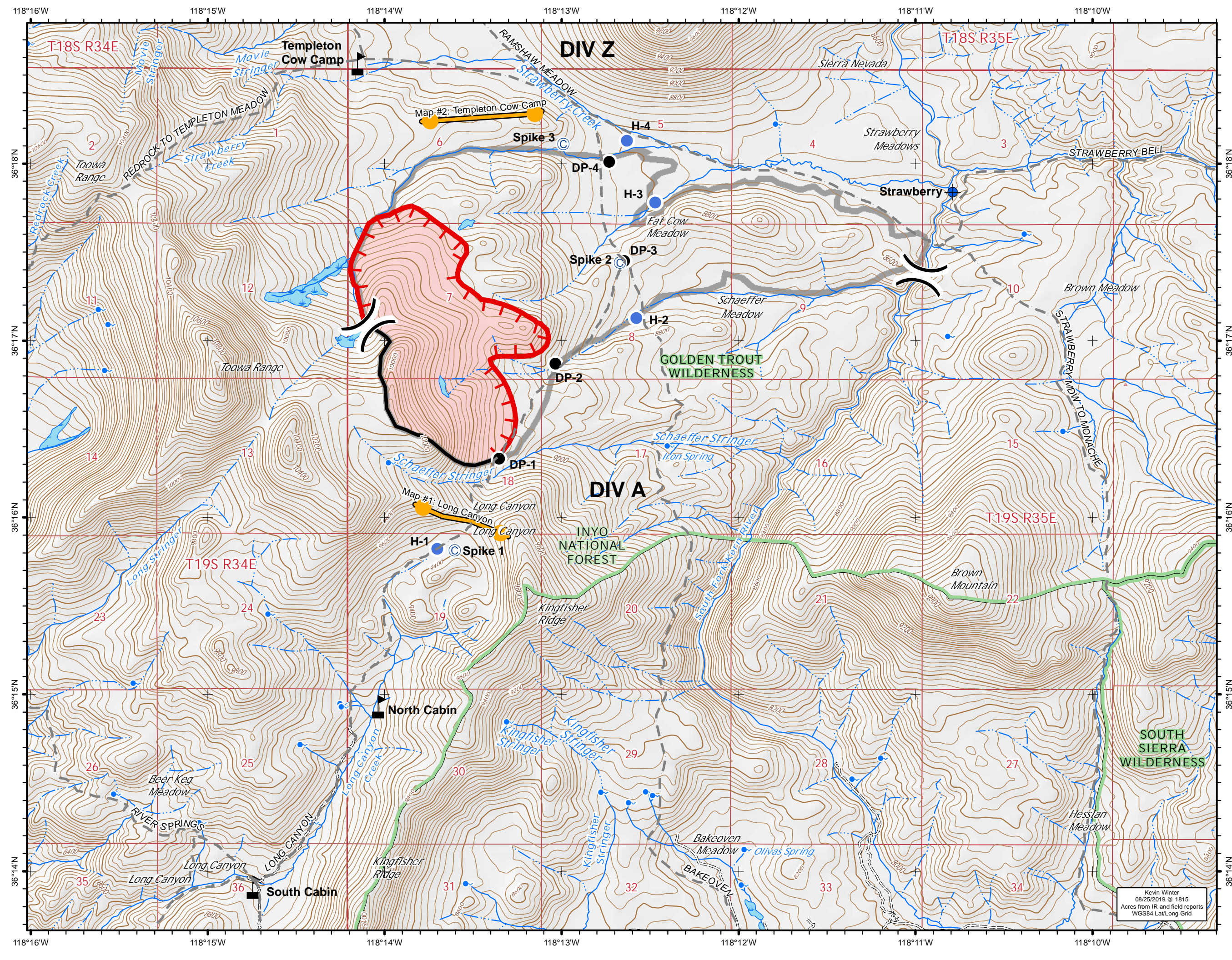
Appx 612 ac at  
 08/25/2019 @ 1300



Label	Latitude	Longitude
DP-1	36° 16.332'	-118° 13.353'
DP-2	36° 16.869'	-118° 13.036'
DP-3	36° 17.452'	-118° 12.647'
DP-4	36° 18.012'	-118° 12.732'
H-1	36° 15.822'	-118° 13.702'
H-2	36° 17.128'	-118° 12.577'
Spike 1	36° 15.813'	-118° 13.605'
Spike 2	36° 17.442'	-118° 12.670'
DIV A	36° 17.086'	-118° 14.094'
Spike 3	36° 18.110'	-118° 12.990'
Strawberry	36° 17.840'	-118° 10.790'
H-3	36° 17.780'	-118° 12.470'
H-4	36° 18.130'	-118° 12.630'
DIV Z	36° 17.371'	-118° 10.967'
North Cabin	36° 14.930'	-118° 14.030'
South Cabin	36° 13.910'	-118° 14.740'
Templeton Cow Camp	36° 18.566'	-118° 14.147'

**Legend**

- Camp
- Dip Site
- Drop Point
- Helispot
- Value at Risk
- Division Break
- Uncontrolled Fire Edge
- Completed Line
- Management Action Point
- Wildfire Daily Fire Perimeter
- Operational Area



Kevin Winter  
 08/26/2019 @ 1815  
 Acres from IR and field reports  
 WGS84 Lat/Long Grid