

# Cow Fire Fire History Map CA-INF-1435

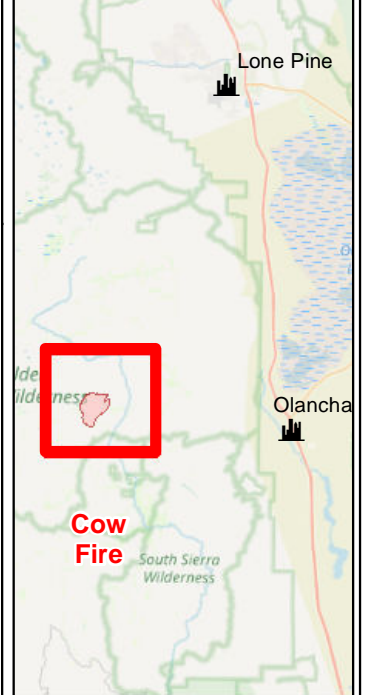
09/02/2019

Appx 1,562 ac at  
09/01/2019 @ 1600



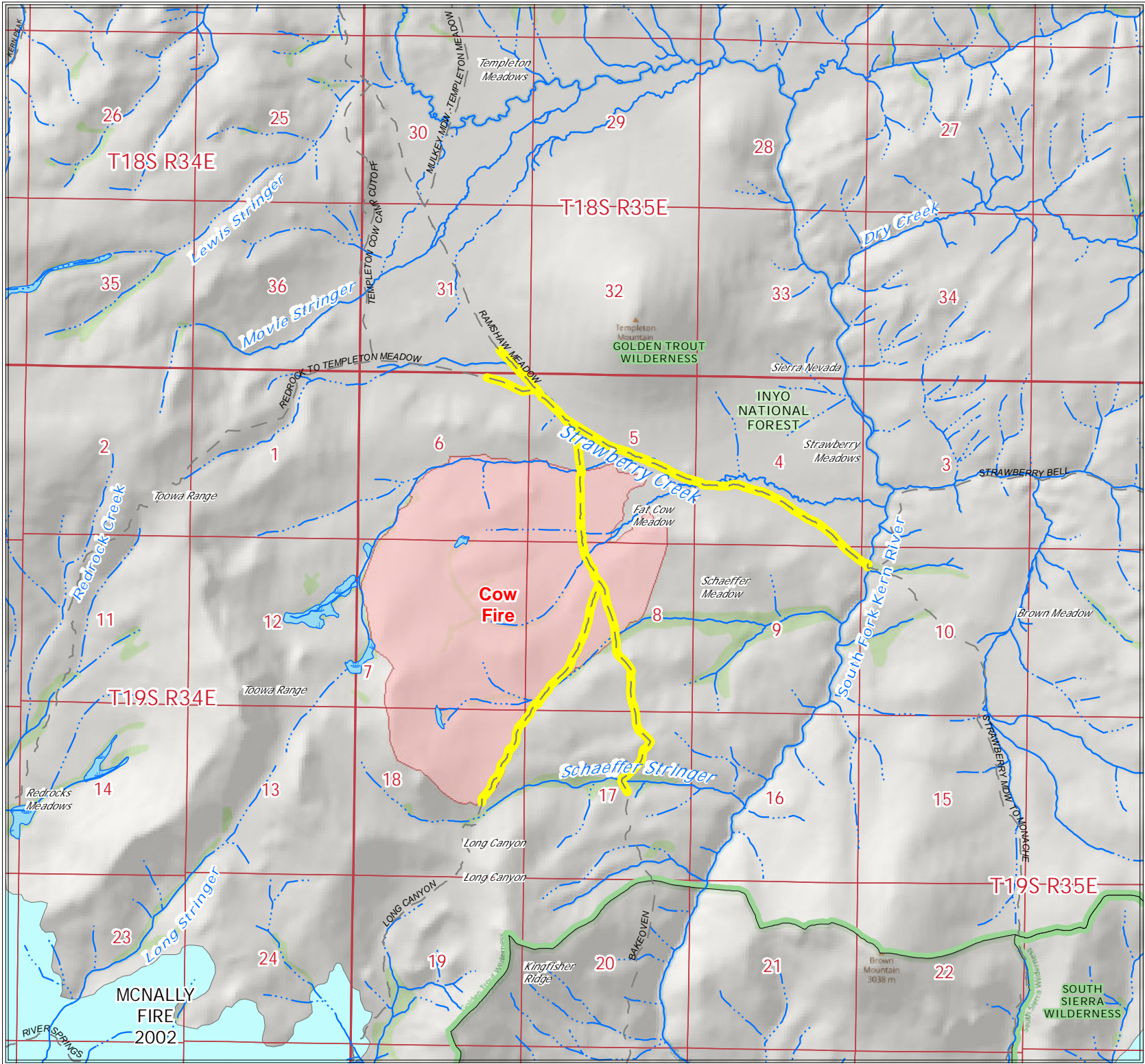
0 0.25 0.5 Miles

## Area of Interest



## Legend

- - Trails
- Trail Closures
- Fire History
- Wildfire Daily Fire Perimeter



**Cow Fire**

T18S R34E

T18S-R35E

T19S.R34E

T19S-R35E

MCNALLY  
FIRE  
2002

INYO  
NATIONAL  
FOREST

SOUTH  
SIERRA  
WILDERNESS

Templeton  
Mountain  
GOLDEN TROUT  
WILDERNESS

Sierra Nevada

Strawberry  
Meadows

Fat Cow  
Meadow

Schaeffer  
Meadow

Brown Meadow

Long Canyon

Long Canyon

Kingfisher  
Ridge

Brown  
Mountain  
3038 m

Schaeffer Stringer

Strawberry Creek

South Fork Kern River

Lewis Stringer

Movie Stringer

Redrock Creek

Long Stringer

Redrocks  
Meadows

RIVER SPRINGS

Toowa Range

Toowa Range

LONG CANYON

BAKMEYEN

Strawberry Bell

STRAWBERRY MOUNTAIN TO DUNSMITH

TEMPLETON COW CAMP CUTOFF

MULKEY MOUNTAIN TO TEMPLETON MEADOW

RAMS HAW MEADOW

REDROCK TO TEMPLETON MEADOW

PERIBLANK