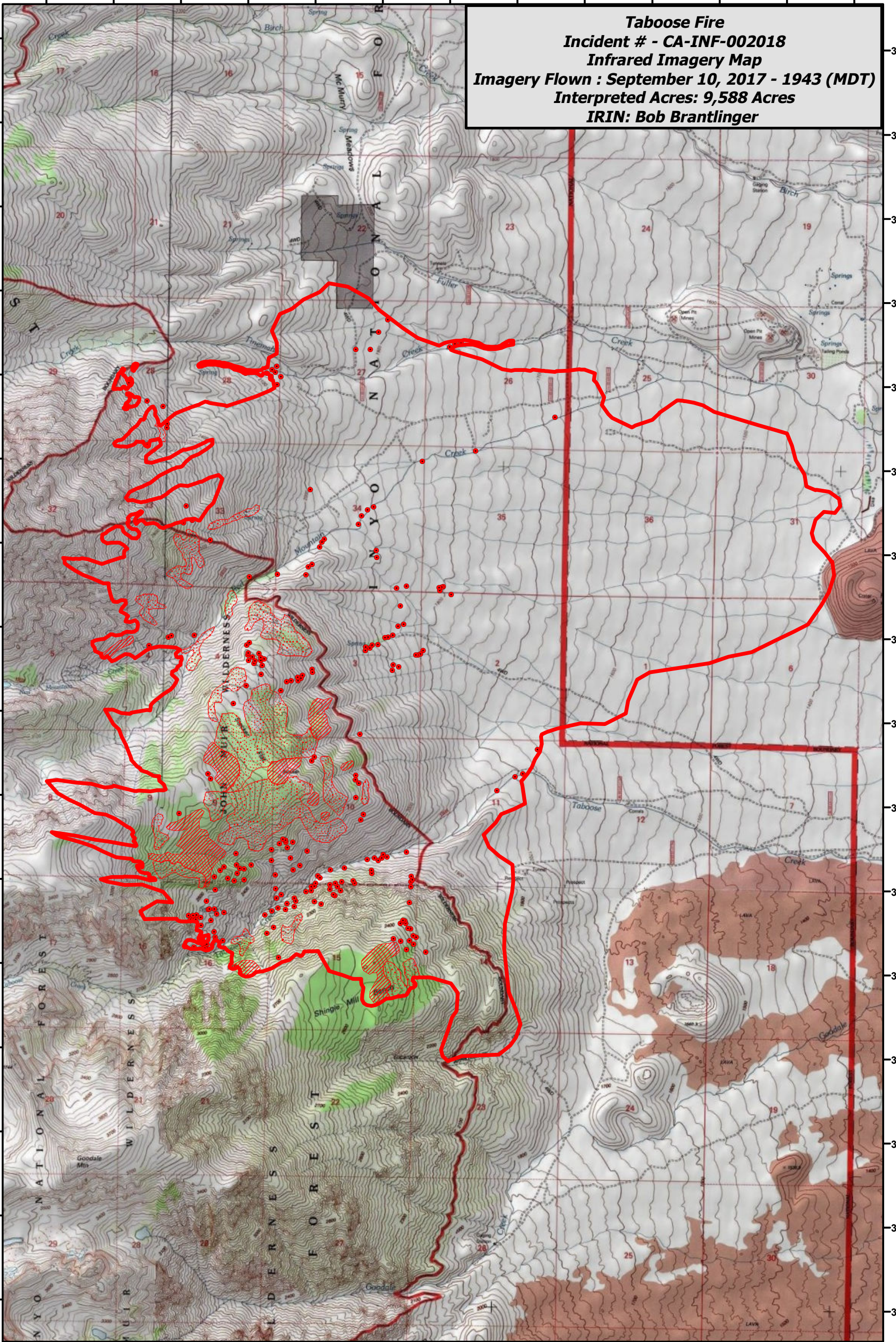


118°23'30"W 118°23'0"W 118°22'30"W 118°22'0"W 118°21'30"W 118°21'0"W 118°20'30"W 118°20'0"W 118°19'30"W 118°19'0"W 118°18'30"W 118°18'0"W 118°17'30"W

37°5'0"N
37°4'30"N
37°4'0"N
37°3'30"N
37°3'0"N
37°2'30"N
37°2'0"N
37°1'30"N
37°1'0"N
37°0'30"N
37°0'0"N
36°59'30"N
36°59'0"N
36°58'30"N
36°58'0"N
36°57'30"N



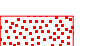

37°5'0"N
37°4'30"N
37°4'0"N
37°3'30"N
37°3'0"N
37°2'30"N
37°2'0"N
37°1'30"N
37°1'0"N
37°0'30"N
37°0'0"N
36°59'30"N
36°59'0"N
36°58'30"N
36°58'0"N
36°57'30"N

Taboose Fire
Incident # - CA-INF-002018
Infrared Imagery Map
Imagery Flown : September 10, 2017 - 1943 (MDT)
Interpreted Acres: 9,588 Acres
IRIN: Bob Brantlinger



118°23'30"W 118°23'0"W 118°22'30"W 118°22'0"W 118°21'30"W 118°21'0"W 118°20'30"W 118°20'0"W 118°19'30"W 118°19'0"W 118°18'30"W 118°18'0"W 118°17'30"W

Legend

-  Heat Perimeter
-  Intense Heat
-  Scattered Heat Source
-  Isolated Heat Source

