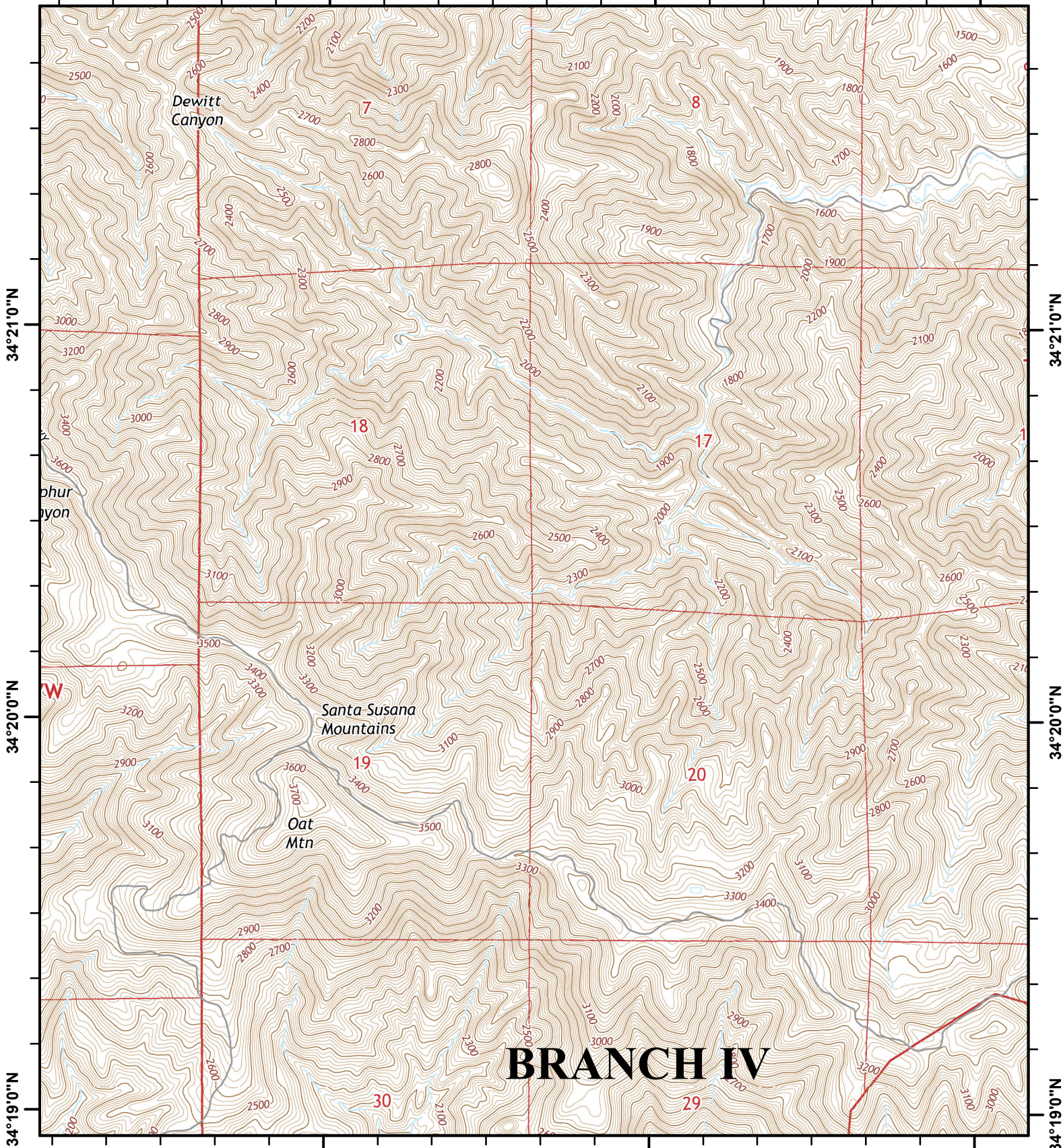


118°36'0"W

118°35'0"W

118°34'0"W



34°21'0"N

34°21'0"N

34°20'0"N

34°20'0"N

34°19'0"N

34°19'0"N

118°36'0"W

118°35'0"W

118°34'0"W

SADDLE RIDGE
Incident Action Plan Map

CA-LFD-001582
 Oct 13, 2019

Page 1 of 8

- Branch
- Division

- Dip Site
- Drop Point
- Staging Area
- Incident Command Post
- Uncontrolled Fire Edge
- Completed Line
- Completed Dozer Line



LACo GISS E. Lamas

118°33'0"W

118°32'0"W

118°31'0"W

34°21'0"N

34°21'0"N

34°20'0"N

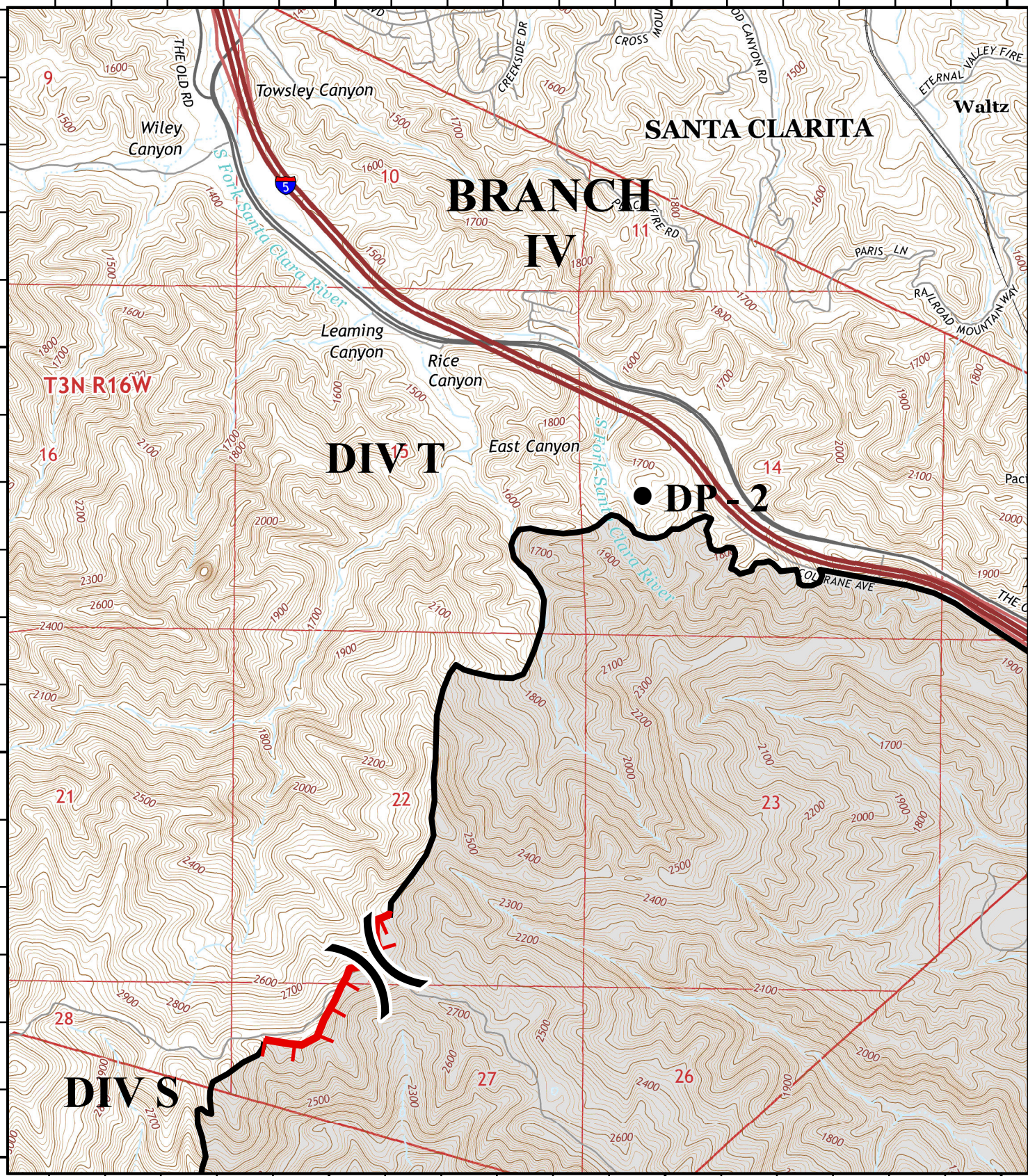
34°20'0"N

34°19'0"N

118°33'0"W

118°32'0"W

118°31'0"W



SADDLE RIDGE

Incident Action Plan Map

CA-LFD-001582

Oct 13, 2019

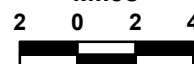
Page 2 of 8

- Branch
- Division

- Dip Site
- Drop Point
- Staging Area
- Incident Command Post
- Uncontrolled Fire Edge
- Completed Line
- Completed Dozer Line



Miles



LACo GISS E. Lamas

118°31'0"W

118°30'0"W

118°29'0"W

34°21'0"N

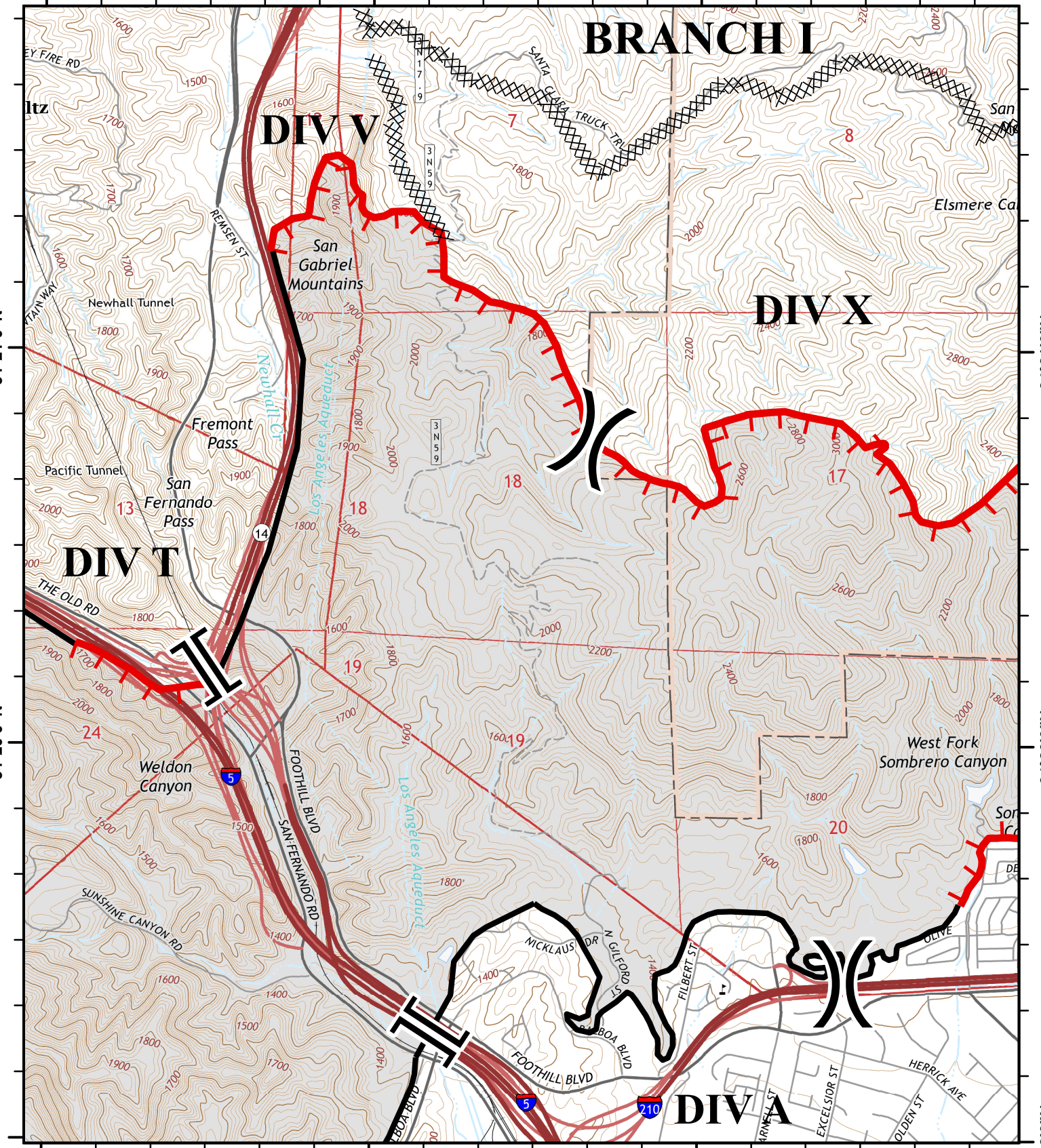
34°21'0"N

34°20'0"N

34°20'0"N

34°19'0"N

34°19'0"N



SADDLE RIDGE

Incident Action Plan Map

CA-LFD-001582

Oct 13, 2019

- [[Branch
-) Division

- Dip Site
- Drop Point
- Staging Area
- Incident Command Post
- Uncontrolled Fire Edge
- Completed Line
- Completed Dozer Line



LACo GISS E. Lamas

118°28'0"W

118°27'0"W

118°26'0"W

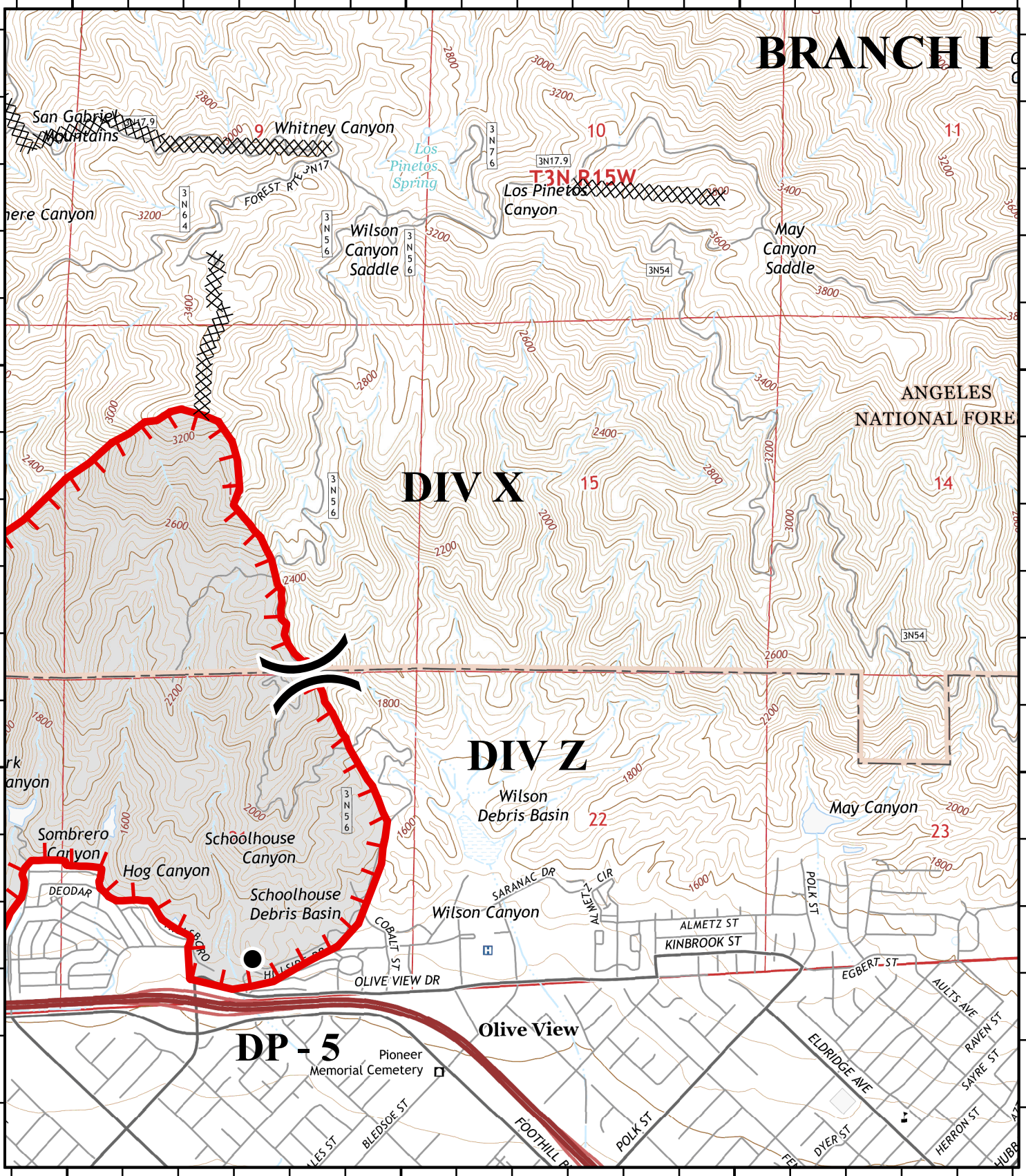
BRANCH I

34°21'0"N

34°21'0"N

34°20'0"N

34°20'0"N



118°28'0"W

118°27'0"W

118°26'0"W

SADDLE RIDGE



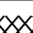
Incident Action Plan Map

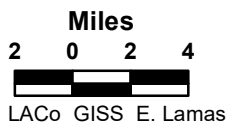
CA-LFD-001582

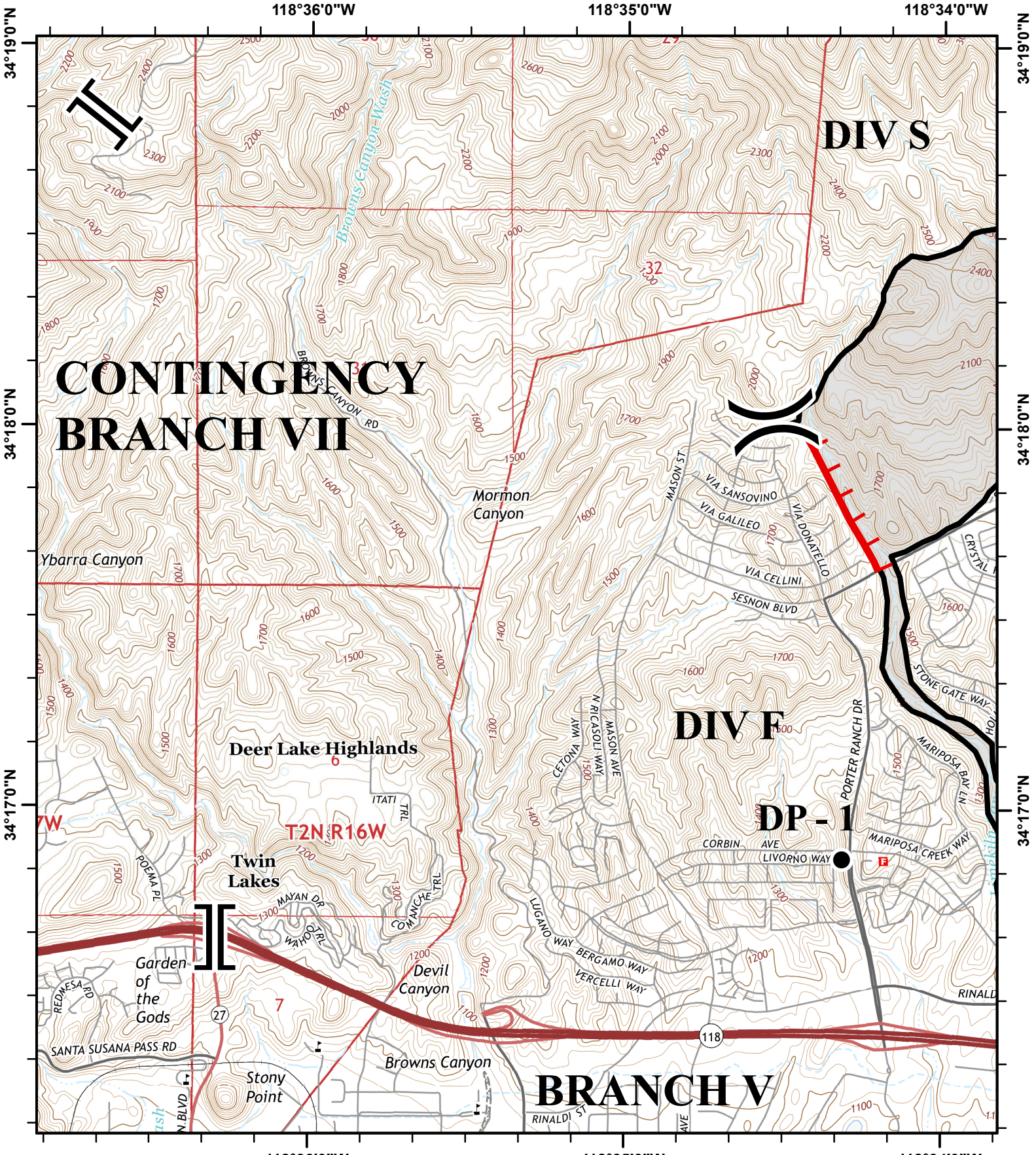
Oct 13, 2019

Page 4 of 8

-  Branch
-  Division

-  Dip Site
-  Drop Point
-  Staging Area
-  Incident Command Post
-  Uncontrolled Fire Edge
-  Completed Line
-  Completed Dozer Line



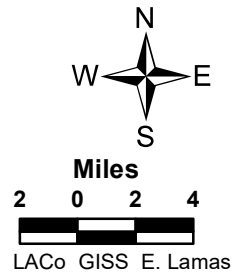


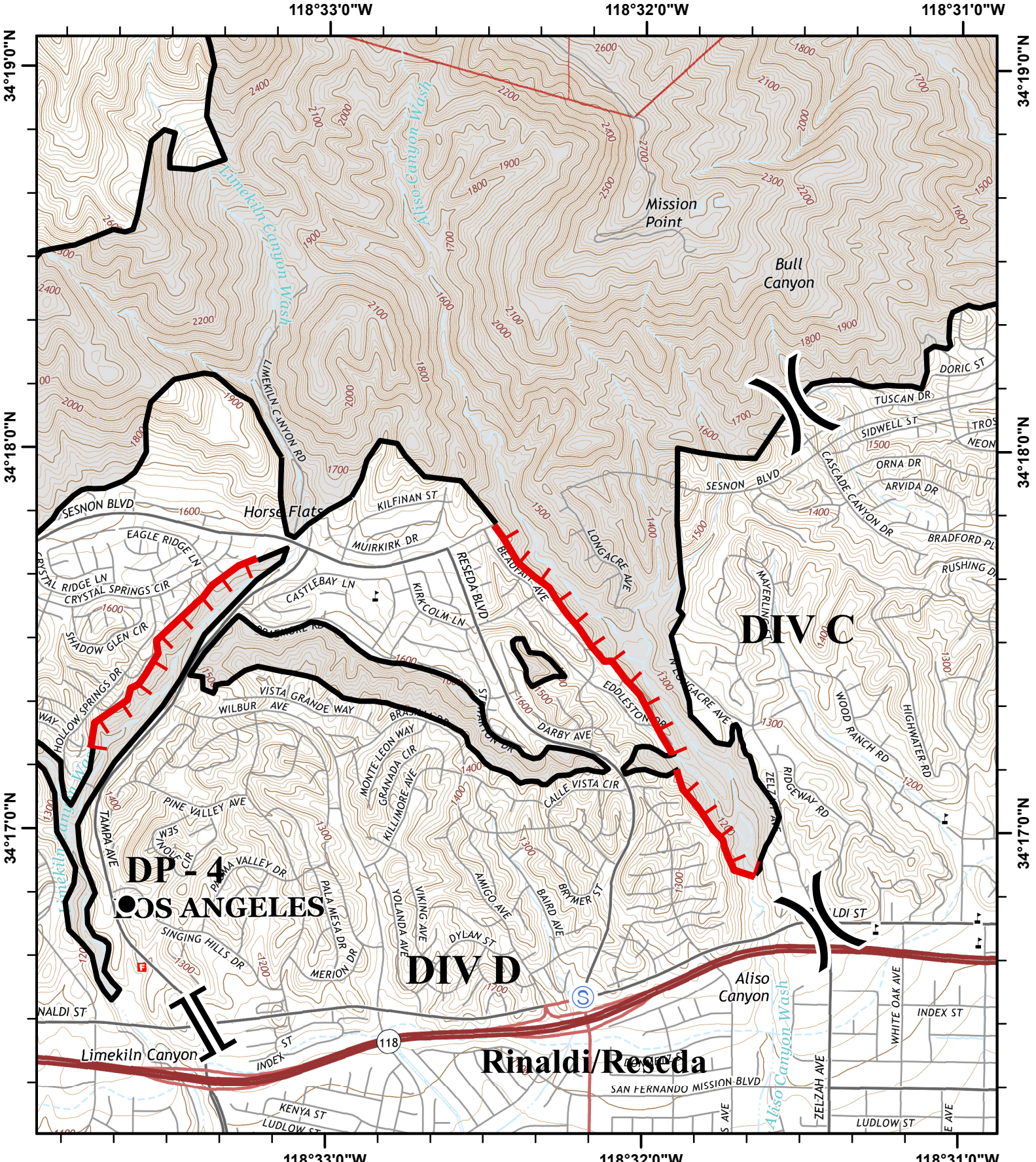
SADDLE RIDGE
Incident Action Plan Map

CA-LFD-001582
 Oct 13, 2019

- Branch
- Division



- Dip Site
- Drop Point
- Staging Area
- Incident Command Post
- Uncontrolled Fire Edge
- Completed Line
- Completed Dozer Line









SADDLE RIDGE
Incident Action Plan Map

CA-LFD-001582
 Oct 13, 2019

-  Branch
-  Division

-  Dip Site
-  Drop Point
-  Staging Area
-  Incident Command Post
-  Uncontrolled Fire Edge
-  Completed Line
-  Completed Dozer Line

North arrow pointing up, with W, E, S, N labels.

Miles
 2 0 2 4

LACo GISS E. Lamas

118°31'0"W

118°30'0"W

118°29'0"W

34°19'0"N

34°19'0"N

34°18'0"N

34°18'0"N

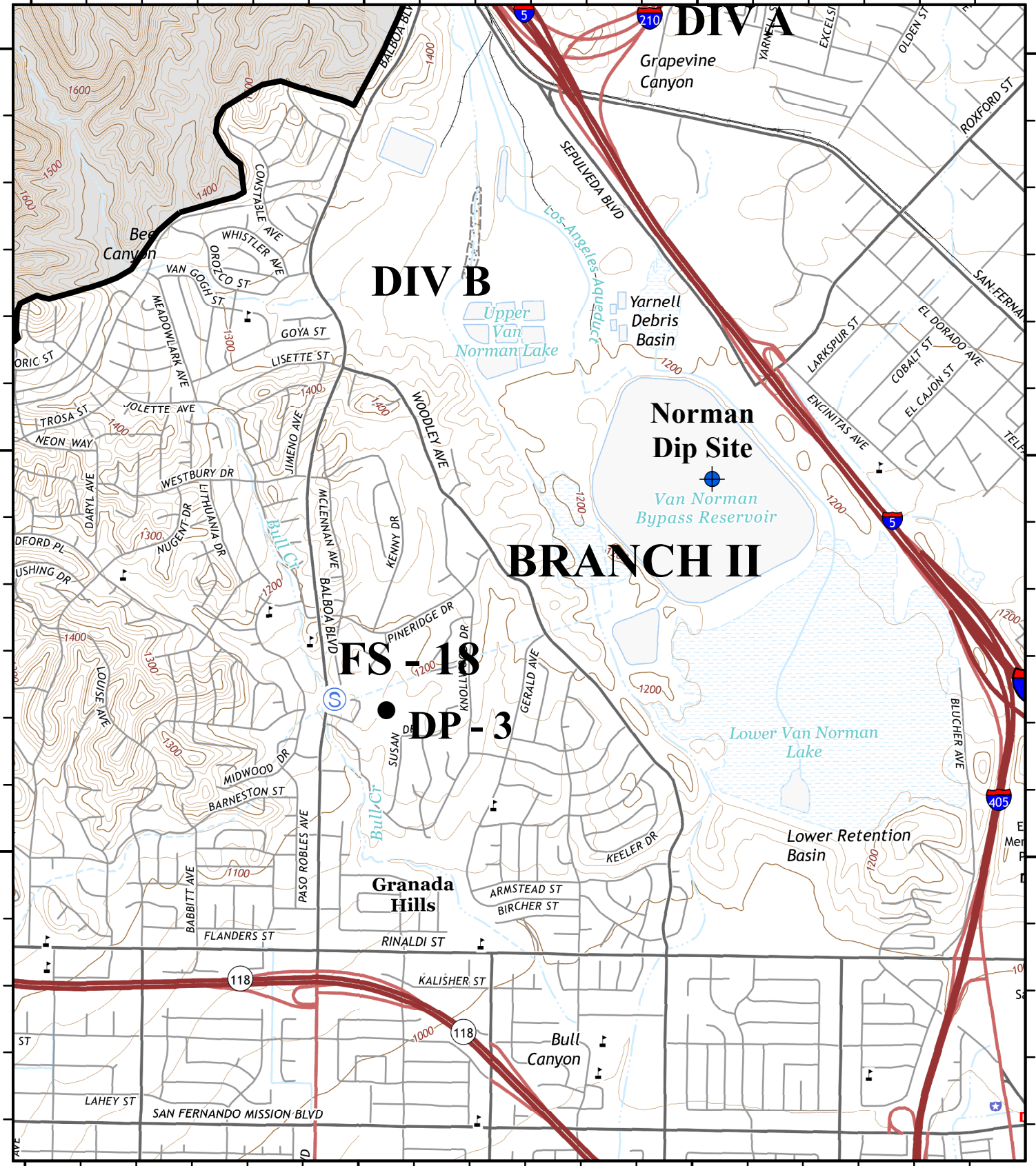
34°17'0"N

34°17'0"N

118°31'0"W

118°30'0"W

118°29'0"W



SADDLE RIDGE

Incident Action Plan Map

CA-LFD-001582

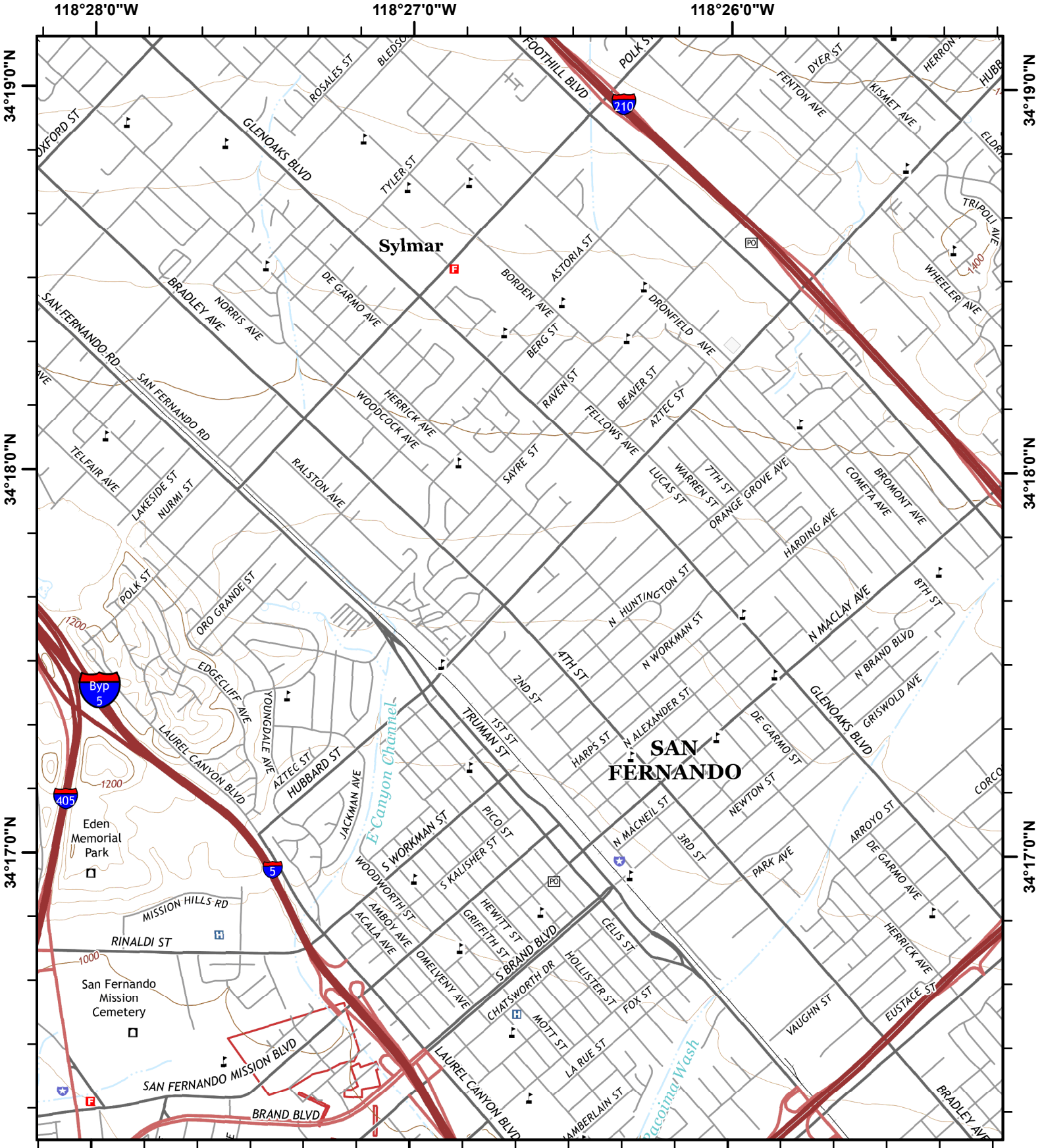
Oct 13, 2019

-  Branch
-  Division

-  Dip Site
-  Drop Point
-  Staging Area
-  Incident Command Post
-  Uncontrolled Fire Edge
-  Completed Line
-  Completed Dozer Line



LACo GISS E. Lamas





SADDLE RIDGE

Incident Action Plan Map


CA-LFD-001582
 Oct 13, 2019

-  Branch
-  Division

-  Dip Site
-  Drop Point
-  Staging Area
-  Incident Command Post
-  Uncontrolled Fire Edge
-  Completed Line
-  Completed Dozer Line



Miles



LACo GISS E. Lamas