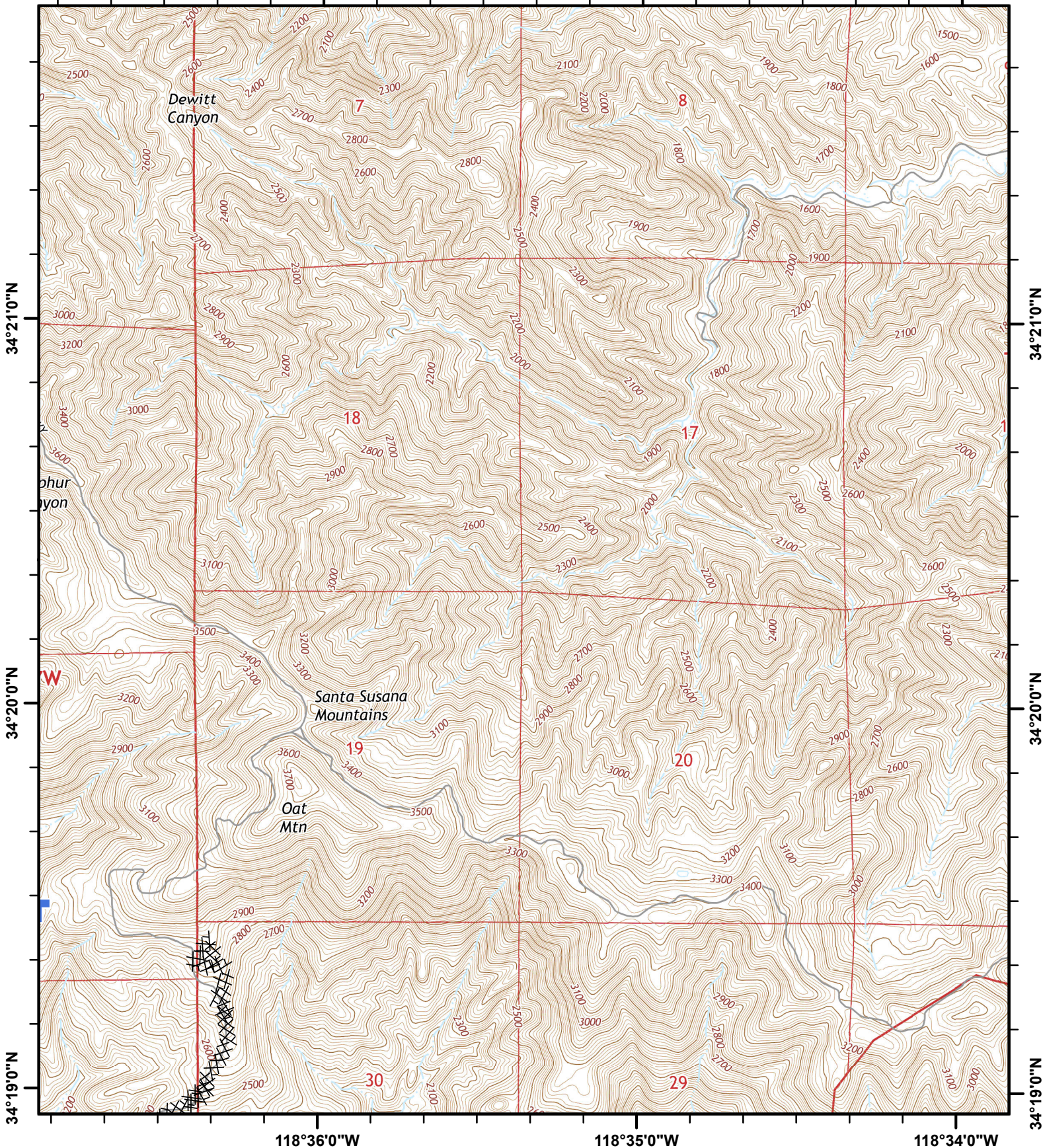


118°36'0"W

118°35'0"W

118°34'0"W



# SADDLE RIDGE

## Incident Action Plan Map

CA-LFD-001582

Oct 17, 2019

Page 1 of 8



Division



Helispot



Mobile Weather Unit



Dip Site



Drop Point



Incident Command Post



Uncontrolled Fire Edge



Completed Line



Completed Dozer Line



Hand Line



Miles

0 0.125 0.25 0.5



LACo GISS E. Lamas

118°33'0"W

118°32'0"W

118°31'0"W

34°21'0"N

34°21'0"N

34°20'0"N

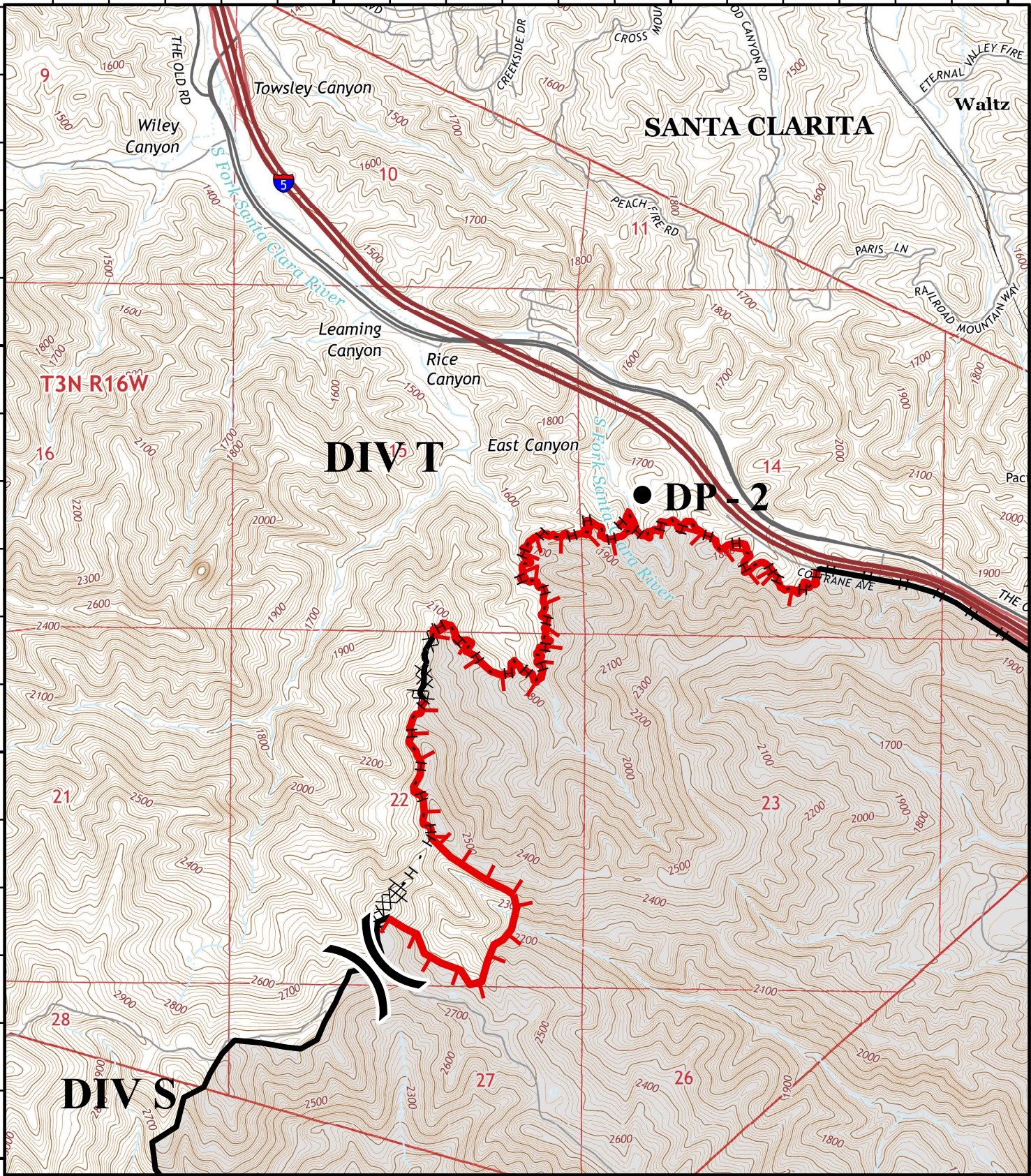
34°20'0"N

34°19'0"N

118°33'0"W

118°32'0"W

118°31'0"W



# SADDLE RIDGE

## Incident Action Plan Map

CA-LFD-001582

Oct 17, 2019



Division



Helispot



Mobile Weather Unit



Dip Site



Drop Point



Incident Command Post



Uncontrolled Fire Edge



Completed Line



Completed Dozer Line



Hand Line



Miles

0 0.125 0.25 0.5



LACo GISS E. Lamas

118°31'0"W

118°30'0"W

118°29'0"W

34°21'0"N

34°21'0"N

34°20'0"N

34°20'0"N

34°19'0"N

118°31'0"W

118°30'0"W

118°29'0"W

# SADDLE RIDGE

## Incident Action Plan Map

CA-LFD-001582

Oct 17, 2019

Page 3 of 8



Division



Helispot



Mobile Weather Unit



Dip Site



Drop Point



Incident Command Post



Uncontrolled Fire Edge



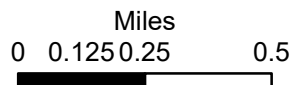
Completed Line



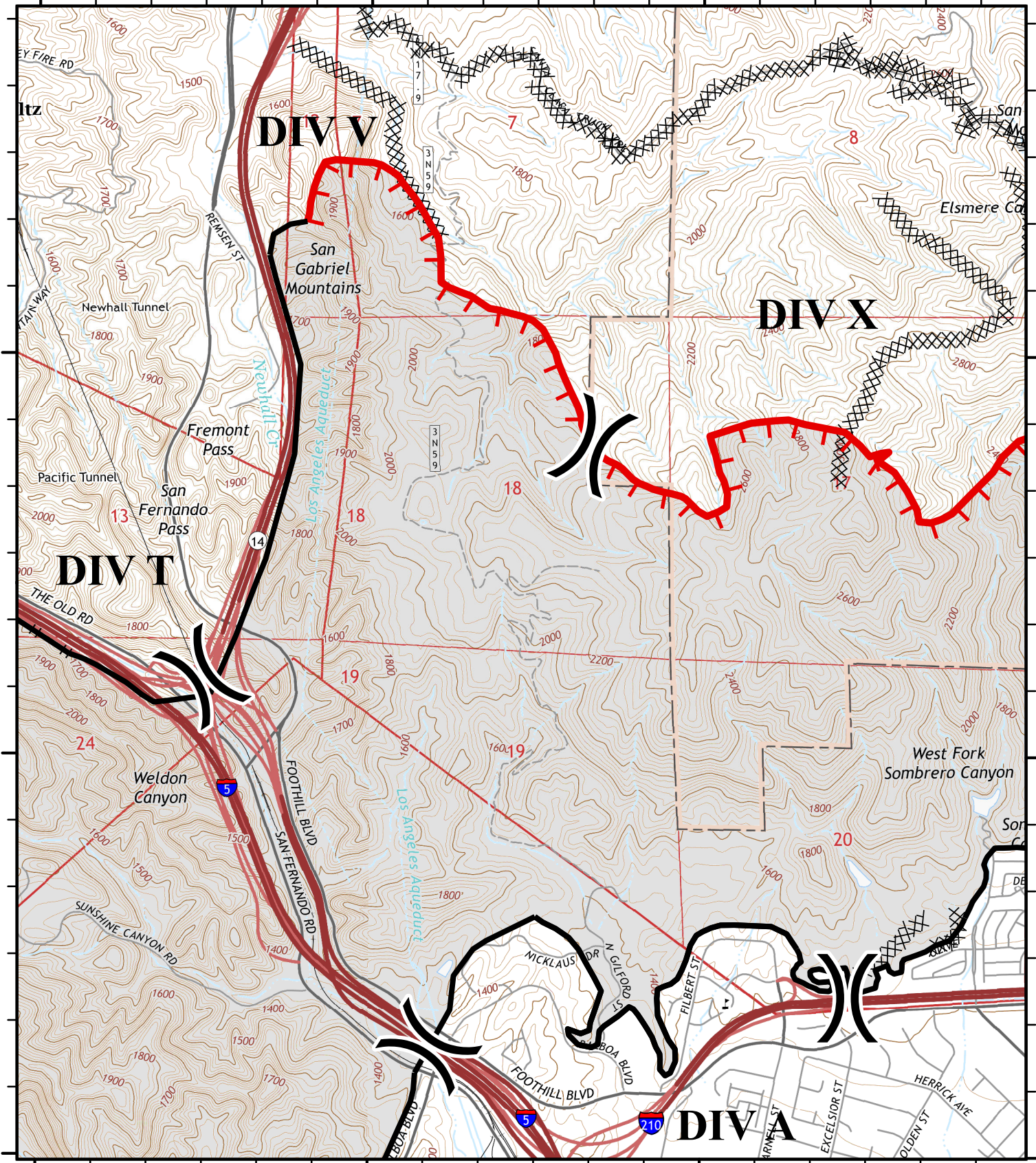
Completed Dozer Line



Hand Line



LACo GISS E. Lamas



118°28'0"W

118°27'0"W

118°26'0"W

34°21'0"N

34°21'0"N

34°20'0"N

34°20'0"N

118°28'0"W

118°27'0"W

118°26'0"W

# SADDLE RIDGE Incident Action Plan Map

CA-LFD-001582  
Oct 17, 2019

Page 4 of 8



Division



Helispot



Mobile Weather Unit



Dip Site



Drop Point



Incident Command Post



Uncontrolled Fire Edge



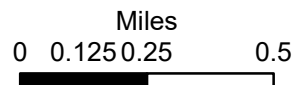
Completed Line



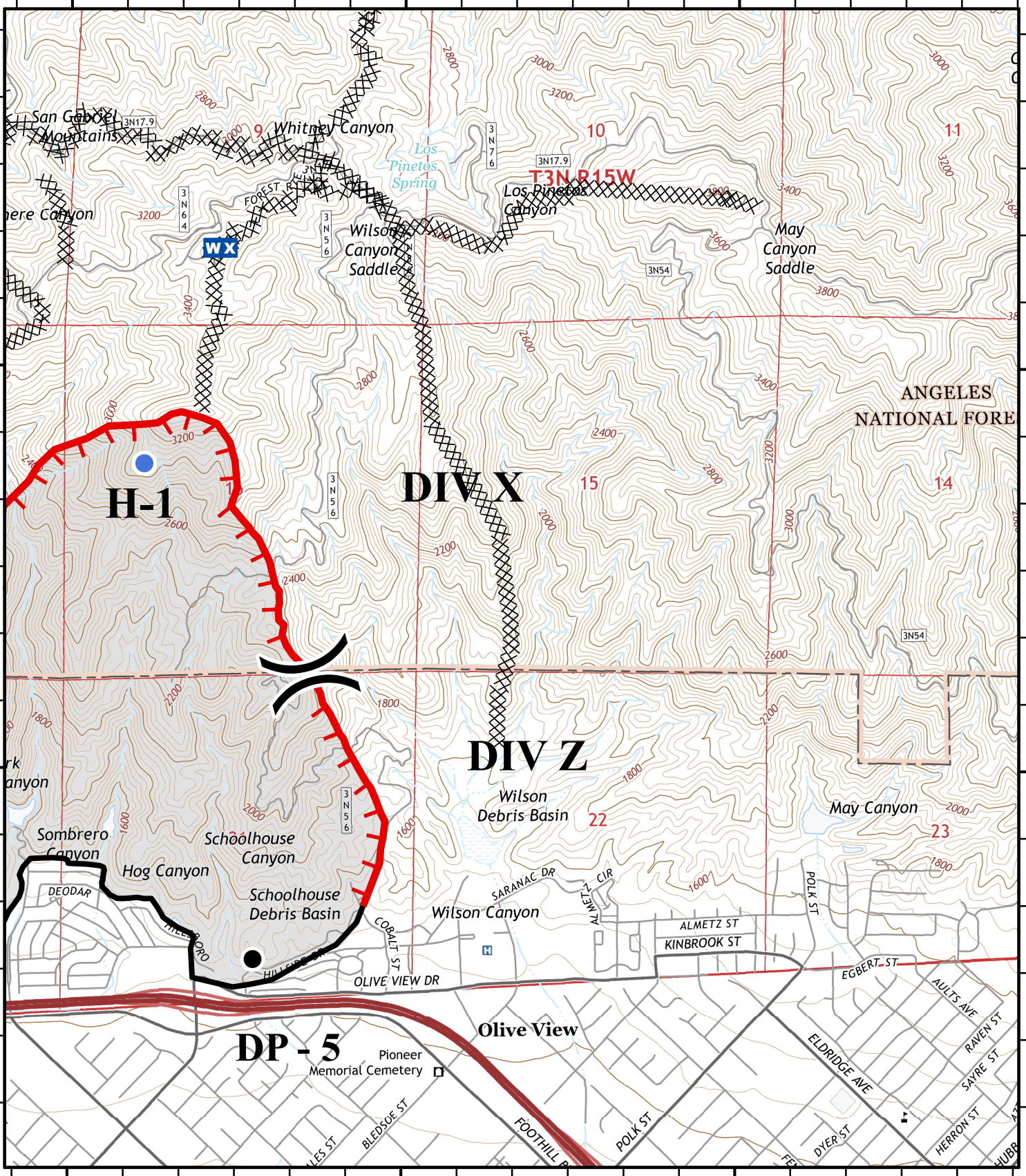
Completed Dozer Line

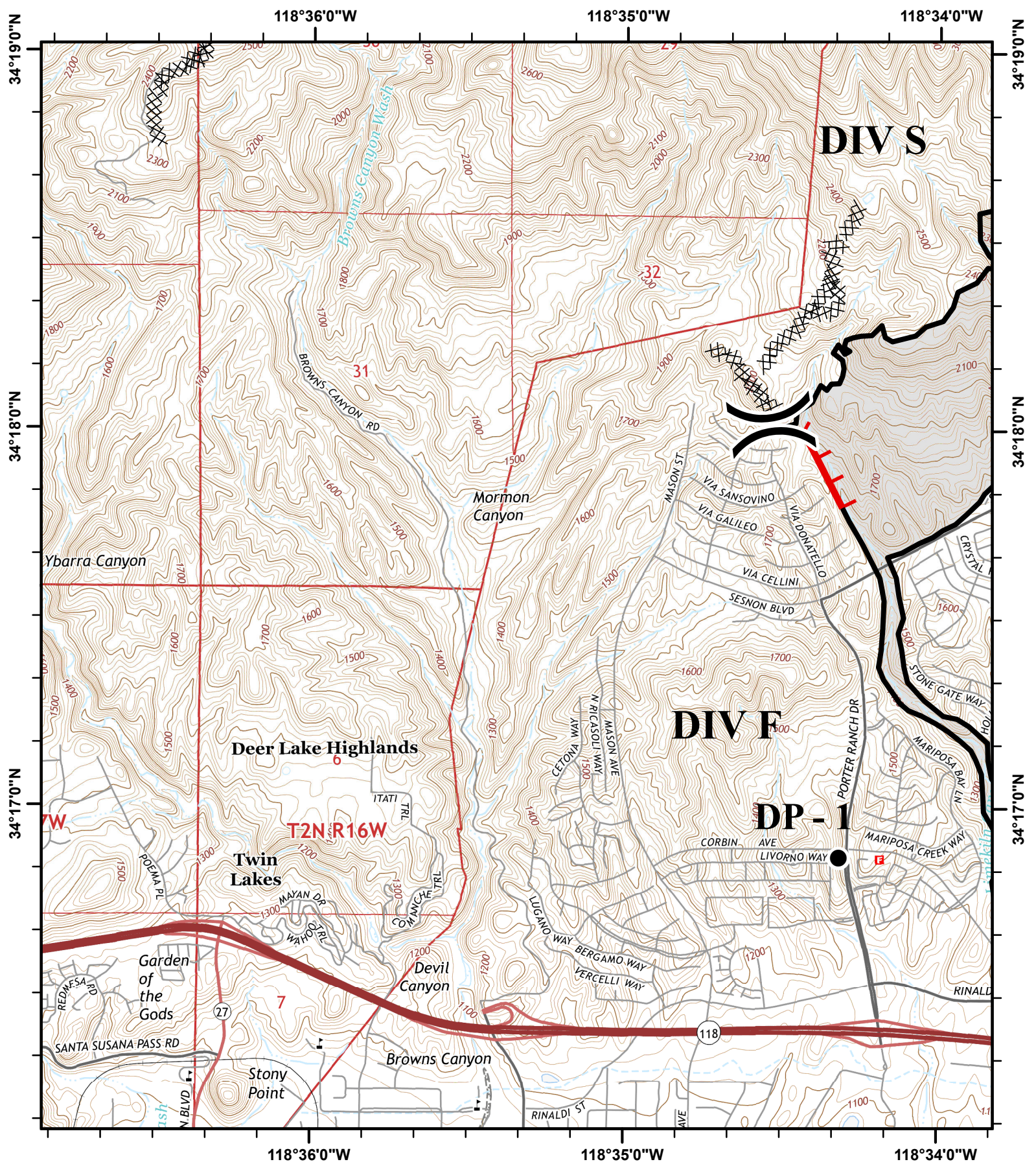


Hand Line













LACo GISS E. Lamas

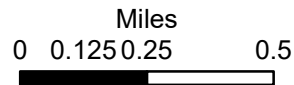


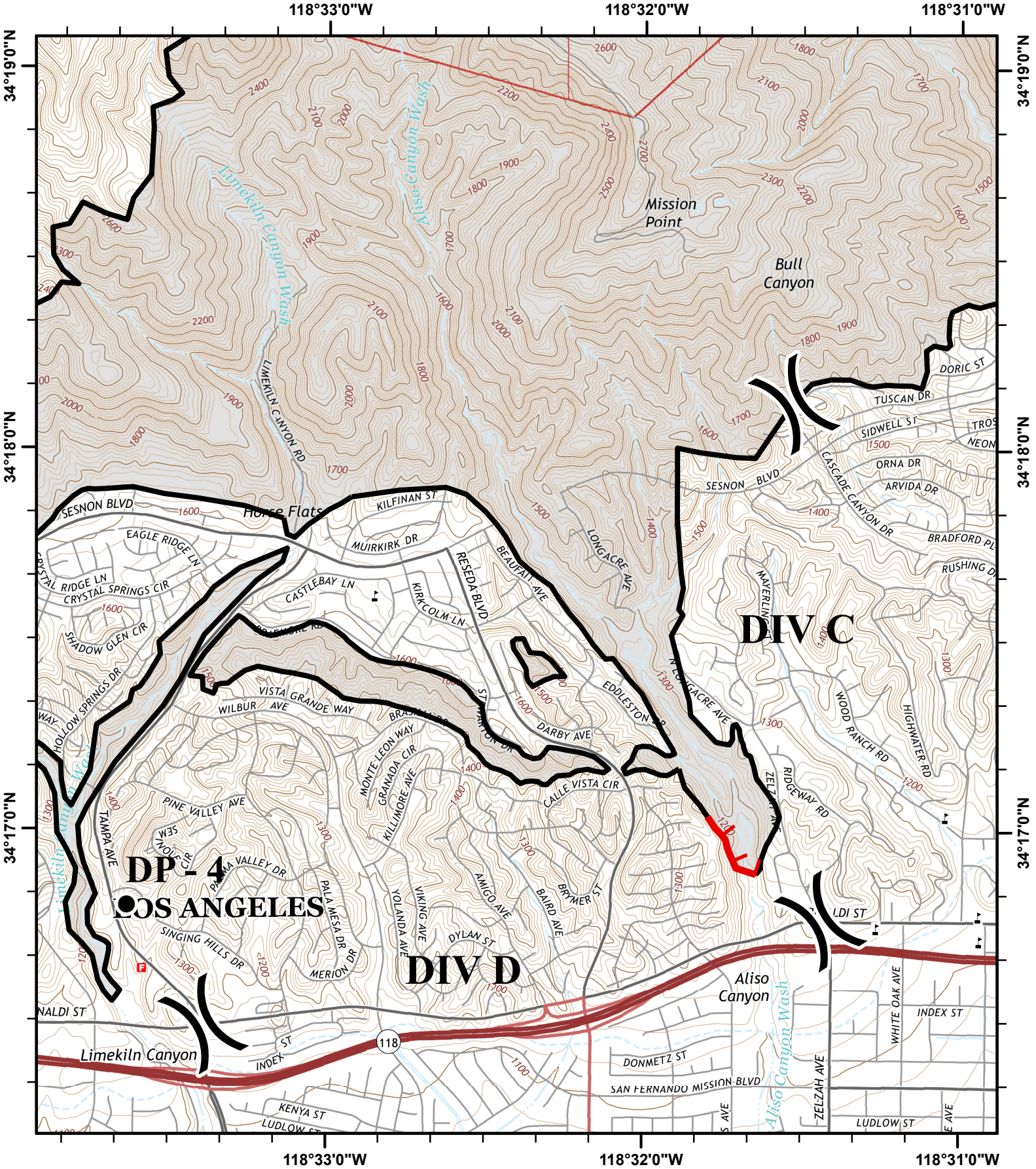


**SADDLE RIDGE**  
**Incident Action Plan Map**

CA-LFD-001582  
 Oct 17, 2019

-  Division
-  Helispot
-  Mobile Weather Unit
-  Dip Site
-  Drop Point
-  Incident Command Post
-  Uncontrolled Fire Edge
-  Completed Line
-  Completed Dozer Line
-  Hand Line

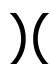





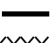






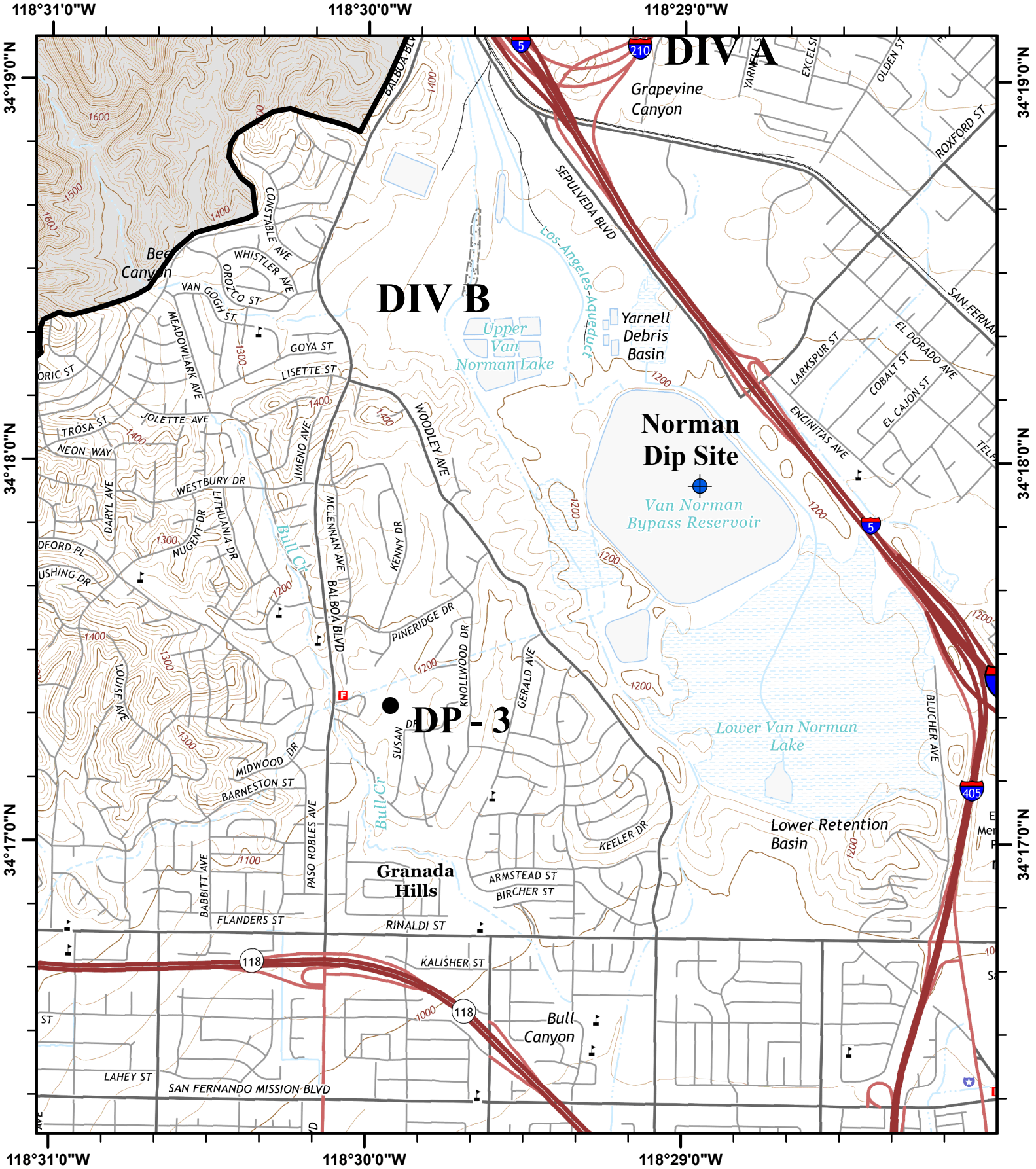
**SADDLE RIDGE**

**Incident Action Plan Map**

CA-LFD-001582  
Oct 17, 2019

-  Division
-  Helispot  
Mobile Weather Unit
-  Dip Site
-  Drop Point
-  Incident Command Post
-  Uncontrolled Fire Edge
-  Completed Line
-  Completed Dozer Line
-  Hand Line



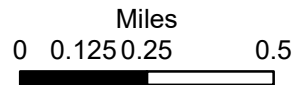


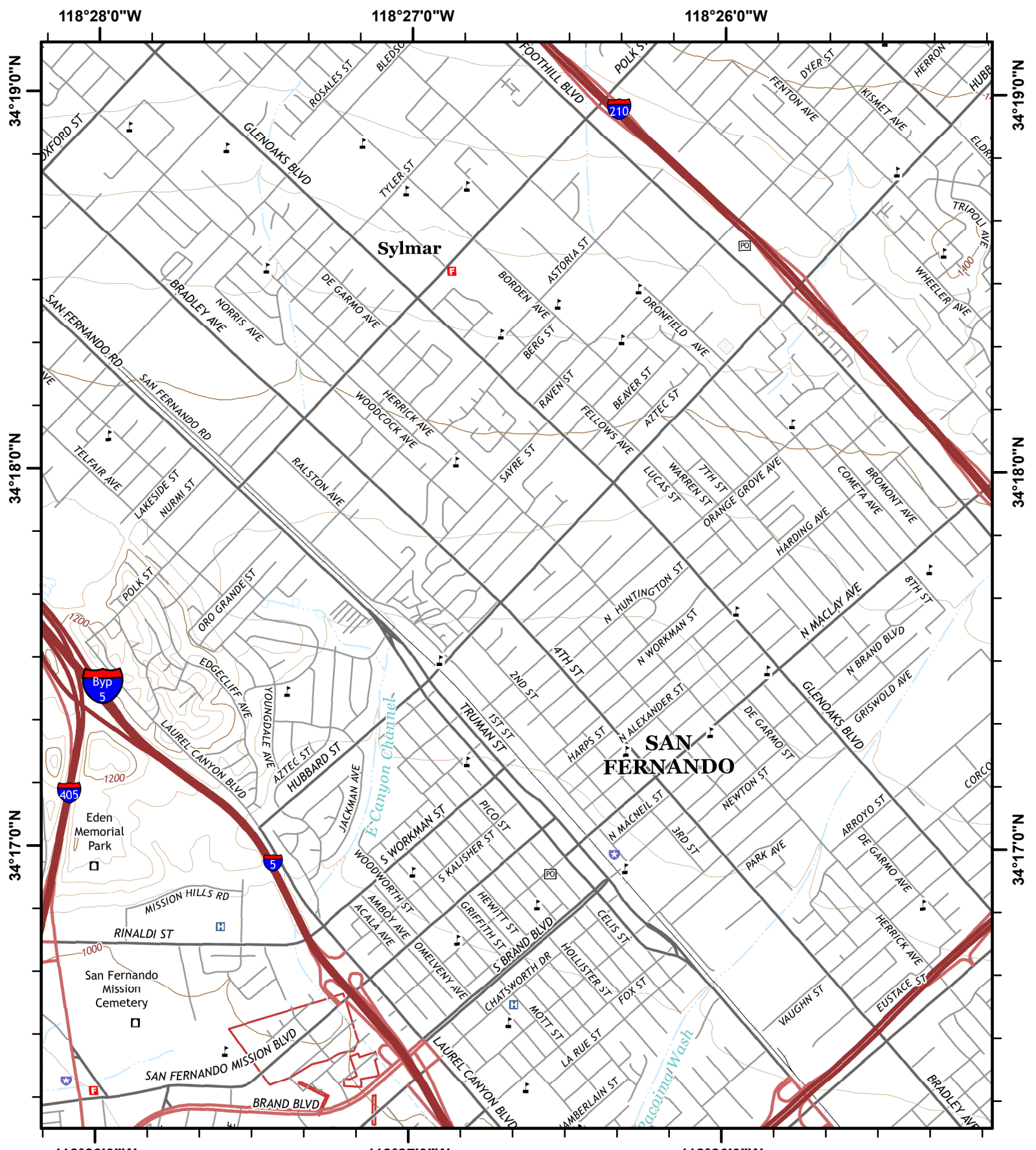
**SADDLE RIDGE**

**Incident Action Plan Map**

CA-LFD-001582  
Oct 17, 2019











- ( Division
- Helispot
- WX Mobile Weather Unit
- ⊕ Dip Site
- Drop Point
- Incident Command Post
- T Uncontrolled Fire Edge
- Completed Line
- Completed Dozer Line
- H - H Hand Line





**SADDLE RIDGE**  
**Incident Action Plan Map**

CA-LFD-001582  
 Oct 17, 2019

-  Division
-  Helispot
-  Mobile Weather Unit
-  Dip Site
-  Drop Point
-  Incident Command Post
-  Uncontrolled Fire Edge
-  Completed Line
-  Completed Dozer Line
-  Hand Line

