

# INCIDENT ACTION PLAN

# SADDLE RIDGE INCIDENT

CA-LFD-001582

Fed PCode PNMU9C20 (1502)



## OPERATIONAL PERIOD

**10/14/2019 0700**

**to**

**10/15/2019 0700**

# INCIDENT OBJECTIVES (ICS 202)

<b>1. Incident Name:</b> Saddle Ridge	<b>2. Operational Period:</b>	Date From: 10/14/2019	Date To: 10/15/2019
		Time From: 0700	Time To: 0700

**3. Objective(s):**

- Management Objectives**
- Provide for first responder and public safety through strict adherence of LCES, standard policies, and Department procedures.
  - Work in conjunction with Public Information Officers and Liason Officers to provide accurate information to the public and the news media.
  - Minimize damage to infrastructure and natural resource areas.
  - Minimize the financial and resource impact to the City of Los Angeles, Los Angeles County, and the Angeles National Forest.
  - Law Enforcement provide for personal property security in the operational area.
  - Develop and implement suppression repair for all division to limit further impact on the environment and local communities.
  - Identify on incident maps any operational contingency lines.

**Control Objectives**

- Keep the fire East of Los Angeles County Line
- Keep the fire South of Towsley Canyon
- Keep the fire West of May Canyon
- Keep the fire North of Highway 118

**General Situational Awareness:**

- \* Safety zones and escape routes are mandatory.
- \* Ensure all personnel have good situational awareness.
- \* Keep your hydration up by drinking water and other electrolyte beverages. Avoid energy drinks.
- \* Maintain good communications with your supervisors, adjacent forces and crew members.
- \* Guard against complacency.
- \* Refer to and review your IRPG often.

**5. Site Safety Plan Required?** Yes  No

**Approved Site Safety Plan(s) Located at:**

**6. Incident Action Plan**

- |   |  |  |  |
|---|--|--|--|
| <input checked="" type="checkbox"/> ICS 203 | <input checked="" type="checkbox"/> ICS 215A         | <input type="checkbox"/> Phone List                  | <input checked="" type="checkbox"/> Fire Suppression Repair Plan |
| <input checked="" type="checkbox"/> ICS 204 | <input checked="" type="checkbox"/> ICS 220          | <input checked="" type="checkbox"/> Training Message | <input type="checkbox"/>   |
| <input checked="" type="checkbox"/> ICS 205 | <input checked="" type="checkbox"/> Incident Map     | <input type="checkbox"/> Travel Map                  | <input type="checkbox"/>   |
| <input checked="" type="checkbox"/> ICS 206 | <input checked="" type="checkbox"/> Weather Forecast | <input type="checkbox"/> Demob Plan                  | <input type="checkbox"/>   |
| <input checked="" type="checkbox"/> ICS 208 | <input checked="" type="checkbox"/> Fire Behavior    | <input checked="" type="checkbox"/> Finance Message  | <input checked="" type="checkbox"/> ICS 214                      |

**7. Prepared By:** Nick Duvally, Mitch Diehl

Position/Title: PSC

Signature: 

**8. Approved by Incident Commander:**

Rose, Strawhun, Pena

Signature: 

ICS 202

## ORGANIZATION ASSIGNMENT LIST (ICS 203)

<b>1. Incident Name:</b> Saddle Ridge		<b>2. Operational Period: Date From:</b> 10/14/2019 Time From: 0700		<b>Date To:</b> 10/15/2019 <b>Time To:</b> 0700	
<b>3. Incident Commander(s) and Command Staff:</b>			<b>7. Operation Section:</b>		
IC/UC's	Rose, Strawhun, Pena	Operations	Oscar Vargas, Guy Tomlinson, Mike Inman		
Deputy	Hissong, McCloud, Whittle	Deputy Operations	Planning Ops Smith, Ramirez		
Safety Officer	Jack Wise, Mitch Brookhyser (t)	Night Ops	Tom Stukey		
Information Officer	Andrew Mitchell,	Staging Area	Sara Rathbun		
Liaison Officer	Victor Garcia, Dayton Calhoun (t)	<b>Branch</b>	<b>I</b>	<b>Matt Conklin</b>	
<b>4. Agency/Organization Representatives:</b>		Division/Group	A	Robert Gaylor	
Agency/Organization	Name	Division/Group	Z	Ron Gregor	
ANF/LACounty/LACity	Robert Garcia/David Richardson/ Ralph Terrazas	Division/Group	X	Craig Martin, Greg Stenmo (t)	
Cal Fire	Tony Jones	Division/Group	V	Curt Wisman	
Cal OES	David Stone	Division/Group			
CHP	Perry Haggard	Division/Group			
	Kim	<b>Branch</b>	<b>II/V</b>	<b>AI Ward</b>	
LASD	Tina Arevalo	Division/Group	B/C	Daniel McNamara	
LAPD	Sgt Bunch	Division/Group	D/F	Mike Schmidt	
American Red Cross	Bernie Lazari	Division/Group			
LA Animal Shelters	Lt. Julian	Division/Group			
Public Health	Mike Rodgers	<b>Branch</b>	<b>IV</b>	<b>Drew Smith</b>	
So Cal Gas	Ferguson	Division/Group	S/T	Darus Ane	
LADWP Electrical	Billy Barnes	Division/Group			
LADWP Water	Jeral Pafford	Division/Group			
SCE	Troy Whitman	<b>Branch</b>			
Mayor's Office	Polychronis	Division/Group	Damage Assessment		
BOS	Jarrob Degonia	Division/Group	Suppression Repair	Renee Henault, John Owings, Matt Lipson	
		Division/Group	A/Z NIGHT	Dave Edwards	
<b>5. Planning Section:</b>		Division/Group	X/V NIGHT	Jim Underwood	
Chief	Nick Duvally, Mitch Diehl	Division/Group	B/C/D/F NIGHT	AI Ward	
Deputy	Danny Douglas	Division/Group	S/T NIGHT	Drew Smith	
Resource Unit	Kristen Allison, Lauren Dale, Kenneth Cook (t), Rob Scott (t),	Division/Group			
Situation Unit	John Hamer, Tom Gikas (t)	Division/Group			
Documentation Unit	Wally Collins	Division/Group			
Demobilization Unit	Jackie Switzler	Division/Group			
GISS	Ed Llamas, Rene Gonzalez	Staging Area			
FBAN	Garrett Hazelton	Division/Group			
IMET	Rich Thompson	Division/Group			
Training Tech Spec	Claudia Soiza	<b>Air Operations Branch</b>		<b>Director:</b>	<b>Brad Idol/Dorman(t)</b>
SCKN	Pat O'Neil (t), Micah Carlson (t)	Air Support Group Supervisor			
<b>6. Logistics Section</b>		Helibase Manager			
Chief	Mike Takeshita	Air Attack			
Supply Unit	Tamara Hanna (t)	<b>8. Finance/Administration Section:</b>			
Facilities Unit	Brian Labrie, Rich Moody (t)	Chief	Pascal D'souza, Judy Reynolds, Muriel Jones (t)		
Food Unit	Ryan O'Gorman	Time Unit	Jessica Luna		
Communications Unit	Mike Horst, Sara Rathburn (t)	Procurement Unit			
Medical Unit	Adrian Reyes (t)	Comp/Claims Unit			
Base Camp Manager	David Godoy, Kathleen Delos Reyes (t)	Cost Unit	Tammy Hasert, Vickie Wilson		
Ground Support	Ron Durbin (t)				
Equipment Mgr	Phillip Martinez				
Ordering Manager	Juan Cueva (t), Theron Cheatham (t), JD Fox (t)				
<b>Prepared By: Name:</b>	Nick Duvally, Mitch I Position/Title:	PSC	Signature: 		
<b>ICS 203</b>	Date/Time:	10/13/2019	2300 hours		



# INCIDENT Weather Forecast



**FORECAST NO:** 3

**NAME OF FIRE:** Saddlebridge

**PREDICTION FOR:** Day/Night **SHIFT**

**UNIT:** LA County Fire

**SHIFT DATE:** 0700 10/14/19 to 0700 10/15/19

**SIGNED:** Richard Thompson

**TIME AND DATE**

**Incident Meteorologist**

**FORECAST ISSUED:** 10/13/19 @ 1900

**WEATHER DISCUSSION:** Onshore flow will prevail across the fire through this evening, then weak offshore winds will develop tonight and Tuesday morning. Afternoon temperatures will be a little below normal. Relative humidity will drop to low to moderate levels this afternoon. The humidity will likely peak this evening then lower overnight as the offshore winds develop.

Warmer and drier conditions can be expected Tuesday and Wednesday.

**WEATHER FORECAST FOR TODAY:**

**WEATHER:** Mostly sunny.

**MAX TEMPERATURES:** 70-76 lower elevations  
62-70 ridges/upper slopes

**MIN HUMIDITY:** 25-40% lower elevations  
15-25% ridges/upper slopes

**EYE LEVEL WINDS:**  
**RIDGETOP -** 0700-1000: Variable 2-5 MPH.  
1000-1900: South to southwest 4-7 MPH Gust 8-12 MPH.

**SLOPE/VALLEY -** 0700-1000: Variable/upslope 2-5 MPH.  
1000-1900: Southerly/upcanyon 5-9 MPH Gust 12-15 MPH.

**STABILITY/INVERSION:** Below 1000 ft AGL, increasing to 4500 ft AGL in the afternoon.

**OUTLOOK FOR TONIGHT:**

**WEATHER:** Mostly clear.

**MIN TEMPERATURES:** 50-58...except 58-66 ridges/upper slopes.

**MAX HUMIDITY:** 35-55% lower elevations (RH lowering through the night)  
20-35% ridges/upper slopes (RH lowering through the night)

**EYE LEVEL WINDS:**  
**RIDGETOP -** 1900-2300: North 3-6 MPH Gusts 7-9 MPH.  
2300-0400: Northeast 4-7 MPH Gusts 9-12 MPH.  
0400-0700: Northeast 6-10 MPH Gusts 15-18 MPH.

**SLOPE/VALLEY -** 1900-2100: Southerly/upcanyon 4-7 MPH Gusts 9-12 MPH.  
2100-0400: North to northeast 2-5 MPH Gusts 6-9 MPH.  
0400-0700: North to northeast 4-7 MPH Gusts 9-12 MPH.

**STABILITY/INVERSION:** 4000 ft AGL, decreasing to below 1000 ft AGL.

# FIRE BEHAVIOR FORECAST

FORECAST NUMBER: 004

TYPE OF FIRE: Wildfire

FIRE NAME: Saddleridge

OPERATIONAL PERIOD: October 14, 2019

TIME ISSUED: 2000 October 13, 2019

UNIT: LAFD, ANF, LAC

SIGNED: GARRETT HAZELTON

Typed/printed: Garrett Hazelton FBAN(T)

## INPUTS

### WEATHER SUMMARY:

**Day Time:** Mostly sunny with temps around 75° Relative humidity: min 15%

Eye level winds variable 2 - 5 mph gusting to 12 mph during the day then increasing to 5 - 9 mph in the afternoon with gusts to 15 mph up slope. Expect a wind shift mid-day with winds coming from the northeast

Ridgetop winds 2 - 5 mph gusts to 12 mph later in the day

**Night Time:** Mostly clear with temps around 55° with around 63° on ridges/upper slopes

Relative humidity: min 35% lower elevations, min 20% ridges/slopes

Eye level winds from the northeast 6 - 12 mph gusting to 12 mph

Ridgetop winds 2 - 5 mph from the north to northeast with gusts to 18 mph

**SEE NOAA WEATHER FORECAST FOR MORE INFORMATION**

## OUTPUTS

### FIRE BEHAVIOR

#### GENERAL:

##### Fuels:

Branch I: Fuels last burned in 2008 with moderate fuel loading recovery and good continuity. There are interior islands with heavy fuel loading down in the deeper drainages they still support fire growth.

Div T: With no fire history in over 40 years and dead standing timber most of the understory has burned. Ladder fuels are of concern and the dead and down that continue to burn down.

#### SPECIFIC:

Probability of Ignition up to 60% at peak fire weather

Burning Index: 43

Spotting Potential: up to 1/2 mile from ridge tops

All Branches Day: Any new perimeter growth will be challenging if not in alignment with wind, slope and fuels. With the mid-day wind shift alignments will change to increase the potential for head fire runs that would be resistant to control efforts. Interior islands still have the ability to burn out and create spotting risk especially from tree torching. Look for opportunities of going direct if fire is in backing and flanking alignment.

All Branches Night: Upper slopes will have diminished recovery compared to lower slopes thru the night supporting fire activity. If the fire burns in head fire alignment flame lengths will support direct line construction. Larger fuels will continue to burn down under the canopy increasing the chance of roll out especially on the steeper slopes of Div. T

**AIR OPERATIONS:** Clear skies and diminished wind speeds will favorable conditions for air resources.

### SAFETY:

**Fire weakened trees are all over the interior areas of the fire. Make sure to look up in your working areas.**

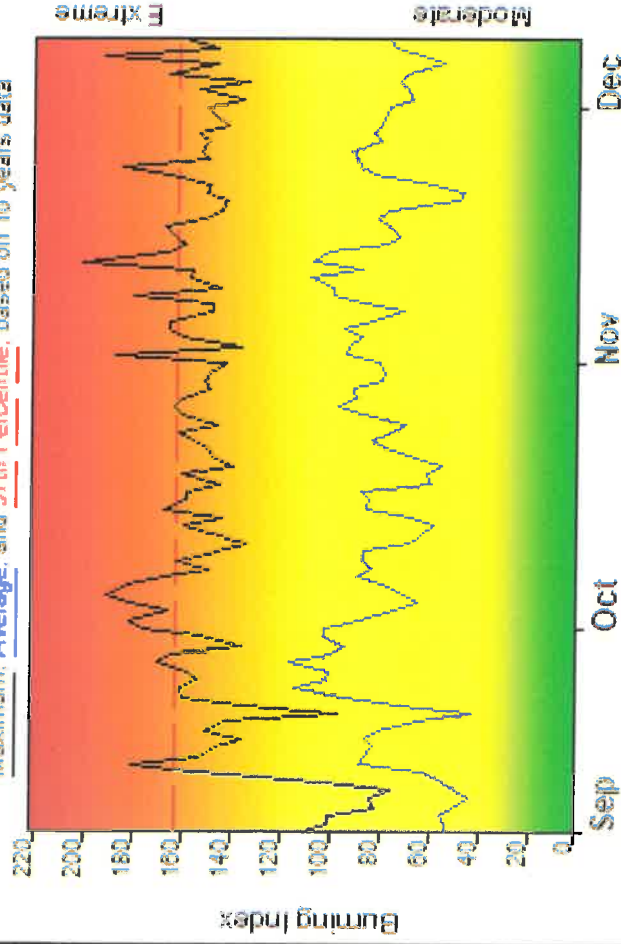
**LCES is built on two guidelines:**

- Before safety is threatened, each firefighter must know the LCES system will be used,
- and LCES must be continuously reevaluated as fire conditions change.

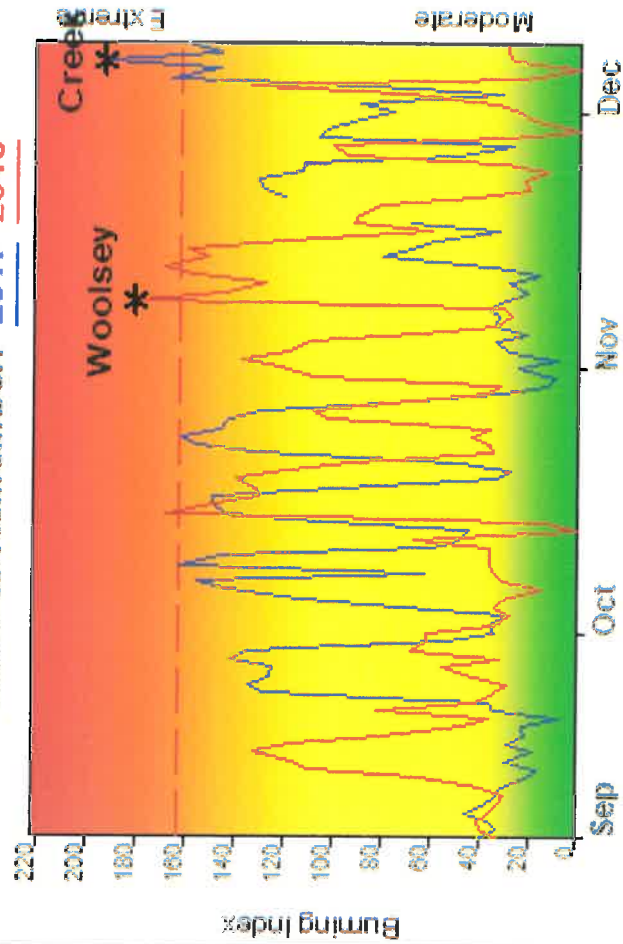


## FIRE DANGER -- LA Zone Review

Maximum, Average, and 97th Percentile, based on 10 years data



## Years to Remember: 2017 2018



## Fuel Model: B - California Chaparral

## Fire Danger Area:

- LA Basin Fire Danger
- LA Basin Forecast Zone
- SIG-LA Basin WX Stations
  - \* Meets NWCG Wx Station Standards

## Fire Danger Interpretation:

- EXTREME** -- Use extreme caution
- High** -- Watch for change
- Moderate** -- Lower Potential, but always be aware

Maximum -- Highest Burning Index by day for 2009 - 2018

Average -- shows peak fire season over 10 years (925 observations)  
**97th Percentile** -- 3% of the 925 days from 2009 - 2018 had an Burning Index above 162

## Local Thresholds - Watch out: Combinations

of any of these factors can greatly increase fire behavior:  
 20+ Wind Speed over 20 mph, RH less than 20%,  
 Temperature over 85, Burning Index over 77

## Remember what Fire Danger tells you:

- ✓ Burning Index gives day-to-day fluctuations calculated from 2 pm temperature, humidity, wind, daily temperature & rh ranges, and precip duration.
- ✓ Wind is part of BI calculation.
- ✓ Watch local conditions and variations across the landscape -- Fuel, Weather, Topography.
- ✓ Listen to weather forecasts -- especially WIND.

## Past Experience:

- Rates of Spread > 160 ch/hr
- Spotting up to 0.5-1 Mile Ahead of Fire Front
- Eye Level Wind Speed > 7 MPH
- Live Fuel Moistures < 75%
- Fine Fuel Moistures < 5%
- Active Night Burning Conditions with RH < 30%
- Non-Wind Driven Fires: Look for variation on the fire ground
- Identify the alignment of wind, slope and solar pre-heating

Responsible Agency: LA County

FF+4.2 build 24.19.06/29/2019-21:13 (C:\Users\Garrett.Hazelton\...LA Basin 2019\_10 Year)

Design by NWCG Fire Danger Working Team



# ASSIGNMENT LIST (ICS 204 WF)

CONTROLLED UNCLASSIFIED  
INFORMATION//BASIC

<b>1. Incident Name:</b> <p style="text-align: center;"><b>Saddle Ridge</b></p>	<b>2. Operational Period:</b> Date From: 10/14/19      Date To: 10/15/19 Time From: 0700              Time To: 0700	<b>3. Branch</b> <b>Division</b> <p style="text-align: center;"><b>I</b>                                      <b>Z</b></p>
--	---	---

<b>4. Operations Personnel:</b>	<b>Page 1 of 1</b> <b>Zulu</b>
---------------------------------	--------------------------------

Operations Section Chief: <b>Oscar Vargas, Guy Tomlinson, Mike Inman</b> Branch Director: <b>Matt Conklin</b> Division/Group Supervisor: <b>Ron Gregor</b>	Night Ops: <b>Tom Stukey</b> Branch Safety: <b>Dan Giles, Jeff Birg (t), Mike Goudchaux (t)</b> Air Attack:
--	---

5. Resources Assigned:		** Resources Below in Bold are 12 Hour **						
Resource Identifier	ALS	LWD	Leader	Personnel	Request #	Hours	Reporting Location	
<b>STC BDF 6606C</b>			<b>Jim Snow</b>	<b>27</b>		<b>0700-1900</b>	<b>ICP</b>	
<b>ENG3 ANF E316</b>				<b>4</b>		<b>0700-1900</b>	<b>ICP</b>	
<b>ENG3 ANF E19</b>				<b>4</b>		<b>0700-1900</b>	<b>ICP</b>	
<b>ENG3 ANF E17</b>				<b>4</b>		<b>0700-1900</b>	<b>ICP</b>	
<b>ENG3 ANF E13</b>				<b>4</b>		<b>0700-1900</b>	<b>ICP</b>	
<b>CRW ANF 63</b>			<b>Pablo Arriaga</b>	<b>21</b>		<b>0700-0700</b>	<b>ICP</b>	
<b>WT LPF 5</b>			<b>Show Talifero</b>			<b>0700-1900</b>	<b>ICP</b>	
<b>WT ANF 10</b>			<b>Kevin Slack</b>	<b>2</b>		<b>0700-1900</b>	<b>ICP</b>	

**6. Work Assignments:**  
Mop up 300' in from control line.  
Improve direct and indirect line constructed in Wilson Cyn.

**7. Special Instructions:**

8. Communications							
Name	Ch	Function	Rx Freq	Rx Tone	Tx Freq	Tx Tone	Notes
LAC V-3	1	COMMAND	152.5400 N	(T14) 151.4	157.8000 N	(T14) 151.4	
FCA V-4D	10	TACTICAL	155.3550 N	(T6) 156.7	155.3550 N	(T6) 156.7	
CALCORD	13	MEDICAL TAC	156.0750 N	(T6) 156.7	156.0750 N	(T6) 156.7	
A/G CMD	14	AIR TO GROUND	167.8125 N	NONE	167.8125 N	NONE	BRANCH, OPS, DIVS
A/G TAC	15	AIR TO GROUND	168.3375 N	NONE	168.3375 N	NONE	ALL DIVISIONS
AIR GUARD	16	EMERGENCY	168.6250 N	NONE	168.6250 N	(T1) 110.9	

**9. Prepared by: Name:**                      Kristen Allison, Lauren Dale, Kenneth Cook (t), Rob Scott (t),                      RESL                      Signature: \_\_\_\_\_

**ICS 204**    Date/Time: 10/13/2019 2200    Personnel Count: 66



# ASSIGNMENT LIST (ICS 204 WF)

CONTROLLED UNCLASSIFIED  
INFORMATION//BASIC

<b>1. Incident Name:</b>	<b>2. Operational Period:</b>	<b>3. Branch</b>	<b>Division</b>
<b>Saddle Ridge</b>	Date From: 10/14/19      Date To: 10/15/19 Time From: 0700              Time To: 0700	<b>I</b>	<b>X</b>

**4. Operations Personnel:** Page 1 of 2      X-ray

Operations Section Chief: <b>Oscar Vargas, Guy Tomlinson, Mike Inman</b> Branch Director: <b>Matt Conklin</b> Division/Group Supervisor: <b>Craig Martin, Greg Stenmo (t)</b>	Night Ops: <b>Tom Stukey</b> Branch Safety: <b>Dan Giles, Jeff Birg (t), Mike Goudchaux (t)</b> Air Attack:
---	---

5. Resources Assigned:		** Resources Below in Bold are 12 Hour **					
Resource Identifier	ALS	LWD	Leader	Personnel	Request #	Hours	Reporting Location
CRW INYO IHC			<b>Joel Schilling</b>	<b>20</b>	<b>C-3</b>	<b>0700-1900</b>	<b>ICP</b>
CRW VISTA GRANDE IHC			<b>Bretty Pascale</b>	<b>18</b>	<b>C-1</b>	<b>0700-1900</b>	<b>ICP</b>
CRW BEAR DIVIDE IHC			<b>Brian Anderson</b>	<b>20</b>	<b>C-39</b>	<b>0700-1900</b>	<b>ICP</b>
CRW MILL CREEK IHC			<b>John Ellison</b>	<b>19</b>	<b>C-2</b>	<b>0700-1900</b>	<b>ICP</b>
CRW EL DORADO IHC			<b>Aaron Humphrey</b>	<b>21</b>	<b>C-11</b>	<b>0700-1900</b>	<b>ICP</b>
CRW VANTANA CREW			<b>Harol Cook</b>	<b>20</b>	<b>C-6</b>	<b>0700-1900</b>	<b>ICP</b>
CRW KLAMATH CREW 14			<b>Andy Zink</b>	<b>19</b>	<b>C-7</b>	<b>0700-1900</b>	<b>ICP</b>
CRW UKONOM CREW 2			<b>Joel Berg</b>	<b>20</b>	<b>C-8</b>	<b>0700-1900</b>	<b>ICP</b>
DOZ BDF DOZER 3			<b>Daren Howard</b>	<b>3</b>	<b>E-19</b>	<b>0700-1900</b>	<b>ICP</b>
DOZ LAC DZ 7				<b>3</b>	<b>E-80</b>	<b>0700-1900</b>	<b>ICP</b>
DOZ LPF DOZER 4			<b>Dan Fawcett</b>	<b>2</b>	<b>E-18</b>	<b>0700-1900</b>	<b>ICP</b>
DOZ LPF DOZER 3			<b>Michael Fuerch</b>	<b>3</b>	<b>E-17</b>	<b>0700-1900</b>	<b>ICP</b>
DOZ ANF DOZER 10			<b>Ryan Walker</b>	<b>4</b>	<b>E-213</b>	<b>0700-1900</b>	<b>ICP</b>
DOZ ANF DOZER 12			<b>Mike Nott</b>	<b>2</b>	<b>E-214</b>	<b>0700-1900</b>	<b>ICP</b>
DOZ LAC DOZER 3				<b>2</b>	<b>E-82</b>	<b>0700-1900</b>	<b>ICP</b>
DOZ						<b>0700-1900</b>	<b>ICP</b>
WT PVT CLEER							<b>ICP</b>
WT SNF 23			<b>Robert McDonald</b>	<b>2</b>	<b>E-16</b>	<b>0700-1900</b>	<b>ICP</b>

**6. Work Assignments:**  
 Construct direct line from Wilson Cyn west to Sombrero Cyn.  
 Construct indirect dozer line along Santa Clara Divide Rd.

**7. Special Instructions:**

8. Communications							
Name	Ch	Function	Rx Freq	Rx Tone	Tx Freq	Tx Tone	Notes
LAC V-3	1	COMMAND	152.5400 N	(T14) 151.4	157.8000 N	(T14) 151.4	
R5 TAC 4	12	TACTICAL	166.5500 N	NONE	166.5500 N	NONE	
CALCORD	13	MEDICAL TAC	156.0750 N	(T6) 156.7	156.0750 N	(T6) 156.7	
A/G CMD	14	AIR TO GROUND	167.8125 N	NONE	167.8125 N	NONE	BRANCH, OPS, DIVS
A/G TAC	15	AIR TO GROUND	168.3375 N	NONE	168.3375 N	NONE	ALL DIVISIONS
AIR GUARD	16	EMERGENCY	168.6250 N	NONE	168.6250 N	(T1) 110.9	

**9. Prepared by: Name:** Kristen Allison, Lauren Dale, Kenneth Cook (t), Rob Scott (t), RESL Signature: \_\_\_\_\_

**ICS 204** Date/Time: 10/13/2019 2200 Personnel Count: 178



# ASSIGNMENT LIST (ICS 204 WF)

CONTROLLED UNCLASSIFIED  
INFORMATION//BASIC

<b>1. Incident Name:</b> <p style="text-align: center;"><b>Saddle Ridge</b></p>	<b>2. Operational Period:</b> Date From: 10/14/19    Date To: 10/15/19 Time From: 0700    Time To: 0700	<b>3. Branch</b> <b>Division</b> <p style="text-align: center;"><b>I</b>                      <b>V</b></p>
--	---	---

<b>4. Operations Personnel:</b>	<b>Page 1 of 1</b> <b>Victor</b>
---------------------------------	----------------------------------

Operations Section Chief: <b>Oscar Vargas, Guy Tomlinson, Mike Inman</b> Branch Director: <b>Matt Conklin</b> Division/Group Supervisor: <b>Curt Wisman</b>	Night Ops: <b>Tom Stukey</b> Branch Safety: <b>Dan Giles, Jeff Birg (t), Mike Goudchaux (t)</b> Air Attack:
---	---

5. Resources Assigned:	** Resources Below in Bold are 12 Hour **						
Resource Identifier	ALS	LWD	Leader	Personnel	Request #	Hours	Reporting Location
<b>STC STF 4631C</b>			<b>Michael Scheu</b>	<b>27</b>	<b>E-267</b>	<b>0700-1900</b>	<b>ICP</b>
<b>STC 6631C</b>				<b>21</b>		<b>0700-1900</b>	<b>ICP</b>
<b>CRW ARROWHEAD IHC</b>				<b>14</b>	<b>C-41</b>	<b>0700-1900</b>	<b>ICP</b>
<b>CRW GROVELAND IHC</b>			<b>Steven Marks</b>	<b>19</b>		<b>0700-1900</b>	<b>ICP</b>
<b>CRW GOLDEN EMPIRE T2IA</b>			<b>Paddrick Young</b>	<b>20</b>	<b>C-18</b>	<b>0700-1900</b>	<b>ICP</b>
<b>CRW HEART LAKE CREW</b>			<b>Corey Buckley</b>	<b>18</b>	<b>C-9</b>		<b>ICP</b>
<b>CRW EL CARISO CREW 2</b>			<b>Charles Kott</b>	<b>20</b>	<b>C-33</b>		<b>ICP</b>
<b>WT ANF 212</b>			<b>Freddie Hernandez</b>	<b>2</b>	<b>E-216</b>	<b>0700-1900</b>	<b>ICP</b>
<b>WT CNF 245</b>			<b>T. Downs</b>	<b>2</b>	<b>E-12</b>	<b>0700-1900</b>	<b>ICP</b>
<b>WT LFD 77</b>				<b>2</b>	<b>E-123</b>	<b>0700-1900</b>	<b>ICP</b>

**6. Work Assignments:**  
 Construct direct handline in Sombrero Cyn.  
 Identify and extinguish hot spots.

**7. Special Instructions:**

**8. Communications**

Name	Ch	Function	Rx Freq	Rx Tone	Tx Freq	Tx Tone	Notes
LAC V-3	1	COMMAND	152.5400 N	(T14) 151.4	157.8000 N	(T14) 151.4	
NIFC T-1	11	TACTICAL	168.0500 N	NONE	168.0500 N	NONE	
CALCORD	13	MEDICAL TAC	156.0750 N	(T6) 156.7	156.0750 N	(T6) 156.7	
A/G CMD	14	AIR TO GROUND	167.8125 N	NONE	167.8125 N	NONE	BRANCH, OPS, DIVS
A/G TAC	15	AIR TO GROUND	168.3375 N	NONE	168.3375 N	NONE	ALL DIVISIONS
AIR GUARD	16	EMERGENCY	168.6250 N	NONE	168.6250 N	(T1) 110.9	

**9. Prepared by: Name:**    Kristen Allison, Lauren Dale, Kenneth Cook (t), Rob Scott (t),    RESL    Signature: \_\_\_\_\_

**ICS 204**    Date/Time: 10/13/2019 2200    Personnel Count: 145







# ASSIGNMENT LIST (ICS 204 WF)

CONTROLLED UNCLASSIFIED  
INFORMATION//BASIC

<b>1. Incident Name:</b> <p style="text-align: center;"><b>Saddle Ridge</b></p>	<b>2. Operational Period:</b> Date From: 10/14/19    Date To: 10/15/19 Time From: 0700    Time To: 0700	<b>3. Branch</b> <b>Division</b> <p style="text-align: center;"><b>IV</b>    <b>S/T</b></p>
--	---	--

Page 1 of 1

<b>4. Operations Personnel:</b>	
Operations Section Chief: <b>Oscar Vargas, Guy Tomlinson, Mike Inman</b> Branch Director: <b>Drew Smith</b> Division/Group Supervisor: <b>Darus Ane</b>	Night Ops: <b>Tom Stukey</b> Branch Safety: <b>Mike Diersing/Eric Suarez (t)</b> Air Attack:

5. Resources Assigned:	** Resources Below in Bold are 12 Hour **							
Resource Identifier	ALS	LWD	Leader	Personnel	Request #	Hours	Reporting Location	
STA OES 1860A						0700-0700		
STC OES 1880C			Brian Dameron	22		0700-0700		
STC NEU 9230C			Jesse Morris	21	E-65	0700-0700		
<b>STC 9260C</b>						<b>0700-1900</b>		
<b>STC 5650C</b>			<b>Robert Sollami</b>	<b>27</b>	<b>E-10</b>	<b>0700-1900</b>		
<b>STC MEU 9110C</b>			<b>Howard Forrest</b>	<b>18</b>	<b>E-64</b>	<b>0700-1900</b>		
<b>STC LNU 9142C</b>			<b>Scott Weese</b>		<b>E-63</b>	<b>0700-1900</b>		
<b>STF XAL 2005F</b>			<b>Nate Girard</b>	<b>22</b>		<b>0700-1900</b>		
<b>STG LAC 1173G</b>				<b>25</b>		<b>0700-1900</b>		
<b>STG LAC 1176G</b>			<b>Chad Hunter</b>	<b>25</b>		<b>0700-1900</b>		
<b>STG LAC 1177G</b>				<b>25</b>		<b>0700-1900</b>		
<b>STG LAC 1178G</b>			<b>David Hernandez</b>	<b>25</b>	<b>C-15</b>	<b>0700-1900</b>		
<b>STG LAC 1179G</b>				<b>25</b>		<b>0700-1900</b>		
STG 9261G			Jason Gumm	31	C-21	0700-0700		
STG LMU 9220G			Troy McKinney		C-16	0700-0700		
<b>STG BDU 9351G</b>			<b>Mike Apodaca</b>		<b>C-19</b>	<b>0700-1900</b>		
<b>STL TUU 9417L</b>			<b>Angelo Prampini</b>	<b>7</b>		<b>0700-1900</b>		
<b>STL LMU 9223L</b>			<b>Peter Coates</b>	<b>5</b>	<b>E-84</b>	<b>0700-1900</b>		
<b>WT LAC 128</b>					<b>E-257</b>	<b>0700-1900</b>		
<b>WT LAC 132</b>					<b>E-256</b>	<b>0700-1900</b>		
HWT1 LAC					E-255	0700-0700		

**6. Work Assignments:**  
Mop up 300' or more, as needed, from control lines.  
Tactical Patrol.  
Backhaul trash and supplies.

**7. Special Instructions:**  
Be aware of respiratory hazard associated with mulch pile.  
Stay uphill/upwind if possible  
DIVS ensure 24hr resources are briefed on night communication plan prior to leaving division.

**8. Communications**

Name	Ch	Function	Rx Freq	Rx Tone	Tx Freq	Tx Tone	Notes
LAC V-3	1	COMMAND	152.5400 N	(T14) 151.4	157.8000 N	(T14) 151.4	
VFIRE26	6	TACTICAL	154.3025 N	(T6) 156.7	154.3025 N	(T6) 156.7	
CALCORD	13	MEDICAL TAC	156.0750 N	(T6) 156.7	156.0750 N	(T6) 156.7	
A/G CMD	14	AIR TO GROUND	167.8125 N	NONE	167.8125 N	NONE	BRANCH, OPS, DIVS
A/G TAC	15	AIR TO GROUND	168.3375 N	NONE	168.3375 N	NONE	ALL DIVISIONS
AIR GUARD	16	EMERGENCY	168.6250 N	NONE	168.6250 N	(T1) 110.9	

Signature: \_\_\_\_\_

**ICS 204**

Date/Time: 10/13/2019 2200

Personnel Count: 278









Saddle Ridge Incident  
Night Operations 204's

10/14/2019

1800-0700











## AIR OPERATIONS SUMMARY ICS-220

**Incident Name and Incident Number**  
**Saddle Ridge CA-LFD-001582**

**Sunrise** 7:01 **Startup** 7:31 **Cutoff** 17:50 **Sunset** 18:20

**General Remarks, Safety Notes, Hazards, Air Operations Special Equipment, etc.**  
 TRACK ALL DIPSITE LOCATIONS / NUMBER OF DIPS / GALLONS TAKEN.  
 TRACK ALL DROP LOCATIONS / NUMBER OF DROPS / GALLONS DROPPED  
 All GPS DATA to BE COLLECTED IN DEGREES, MINUTES, DECIMAL MINUTES FORMAT.  
 AVOID Aerial Application of Retardant / Foam / Agent within 300' of Waterways, Bodies of Water, etc.  
 If Retardant / Foam / Agent is Dropped Within These Areas Immediately Notify the AOB and Provide the Following Information: Lat / Long, Estimated Number of Gallons and a Map Detailing The Area.

**Time Prepared**  
 18:00

**Shutdown**  
 18:50

**Helibase Information**  
 Name Camarillo  
 Latitude 34 12.83  
 Longitude 119 05.66

Name KWJF - Fox Field  
 Latitude 34 44.46  
 Longitude 118 13.12  
 (use page 2 if needed)

**Date Prepared**  
 Sunday, October 13, 2019

**Operational Period - Date**  
 Monday, October 14, 2019

**TFR Information**  
 Request # A-111  
 Radius: Rhombus NM  
 Altitude: 7000' MSL  
 Centerpoint: 34 20.13 Lat  
 118 30.48 Long  
 NOTAMS: 9/5303  
 Frequency 123.175  
<http://tfr.faa.gov/tfr2/list.html>

**Prepared By**  
 Bart Dorman

**Operational Period - Time**  
 0600-0600

**Rescue Ship Information**  
 Name LA County or LA County or  
 Phone LA City, LA City,  
 Make/Model Request Request  
 Location through COMS through COMS  
 Request Procedure for These Aircraft:

Frequencies	RX	Tone	TX	Tone	AM / FM	Position	Name	Phone	Trainee Name	Phone
AIR TACTICS Primary	169.1000		169.1000		FM	AOBD	Brad Idol	805-338-4715	Bart Dorman	818-929-5987
AIR TACTICS Secondary					FM	AOBD				
AIR / AIR Rotor Primary	123.1750		123.1750		AM	ASGS	Greg Bradshaw	949-887-2841		
AIR/AIR Rotor Wing Secondary					AM	ASGS				
AIR / AIR - Briefing					AM	HEBM	KWJF - Kevin Christy	310-422-3832		
AIR / GROUND Command	167.8125		167.8125		FM	HEBM	Camarillo - Jerick Domingues	805-350-3716		
AIR / GROUND Tactical	168.3375		168.3375		FM	HLCO	KWJF - Doug Ross	951-288-5372		
COMMAND	152.5400	151.4	157.8000	151.4	FM	HLCO	KWJF - Tim Perkins	949-702-3868		
TOLC					AM	HLCO	Camarillo - Jon Harris	805-729-0299		
DECK	163.1000		163.1000		FM	HLCO	KWJF - Mark Babieracki	970-946-4800		
CALCORD - MEDICAL	156.0750	156.7	156.0750	156.7	FM	ATGS	AA-52- Brian Baker	530-394-8110		
AIR GUARD - Emergency Only	168.6250		168.6250	110.9 (1)	FM	ATGS	AA-12 Joel Lane	559-310-9430	Isaac Flatly	530-864-0202
						ATGS				

### HELICOPTERS ( Use page 2 if Needed )

FAA #	Type	Make/Model	Helibase	Start	Avail	Remarks / A - #	FAA #	Type	Make/Model	Helibase	Start	Avail	Remarks / A - #
8GH	III	A-Star	KWJF	630	700	HLCO A-69	9125M	I	Sikorsky/CH54A	KWJF	630	700	A-34
922FS	III	Bell/407	Camarillo	630	700	HLCO A-68	624CK	I	Sikorsky/S61	KWJF	630	700	A-12
707AH	III	Bell/407	KWJF	630	700	HLCO A-70	4037S	I	Sikorsky/S64E	KWJF	630	700	A-13
15HX - 531	II	Bell/205A1 ++	KWJF	1730	700	Night Only - A-3	261CG	I	Sikorsky/S61	Van Nuys	24H	24H	A-14
205WW - 532	II	Bell/205A1 ++	KWJF	630	700	A-16	404AJ	I	Boeing/CH47D	Camarillo	630	700	A-15
386HQ - 530	II	Bell/205A1 ++	KWJF	630	700	A-53	1043T	I	Sikorsky/S61	KWJF	630	700	A-32
612TA - 528	II	Bell/212HP	Camarillo	630	700	A-55	472CH	I	Boeing/CH47D	Camarillo	630	700	A-49
109Z-H509	II	Bell/209	KWJF	630	700	HLCO/IR A-106	722HT	I	Sikorsky/CH54B	Camarillo	630	700	A-51
							7095B	I	Sikorsky/CH54A	Camarillo	630	700	A-36
							718HT	I	Sikorsky/CH54B	Camarillo	630	700	A-50

**Lopez MRB is located at:**  
**N 34 17.635 x W 118 23.459**

<b>Helibase Name:</b>	Van Nuys Airport
<b>Latitude:</b>	34 12.34
<b>Longitude:</b>	118 29.22
<b>Helibase Name:</b>	Helibase Name:
<b>Latitude:</b>	Latitude:
<b>Longitude:</b>	Longitude:



## HEALTH AND SAFETY MESSAGE

### *SAFETY IS EVERYONES RESPONSIBILITY*

INCIDENT: Saddle Ridge Fire

DATE: 10/14-15/2019

TIME: 0700-0700

**Major Hazards and Risks: Toxins from Smoke during Overhaul and Mop-up, Backing Accidents, Personal Hygiene, Complacency and Poison Oak!**

Fire Order of the Day– Give Clear Instructions and Be sure They are Understood.

#### **Watch Out Situation** COMMUNICATION BREAKDOWN



- *Drink lots of fluids to avoid dehydration.*
- *Visit the Medical Unit right away for minor injuries or sickness.*
- *Maintain your personal hygiene*

#### **Code of Conduct for Fireline Personnel:**

- Firefighter safety comes first on every fire every time.
- The 10 Standard Firefighting Orders are firm...we don't break them; we don't bend them.
- All 18 Watch Out Situations must be mitigated before engagement or re-engagement of suppression activities.
- Every firefighter has the right to know that his or her assignments are safe.
- Every fireline supervisor, every fire manager, and every administrator has the responsibility to confirm that safe practices are known and observed.

Incident Safety Officer: Jack Wise SOF 1, Mitch Brookhyser SOF 2 (t)

## INCIDENT SAFETY ANALYSIS 215a

SADDLE RIDGE - Monday, October 14, 2019

8. Location	9. Hazard	6. Control or Abatement Action (Engineering, Administrative, PPE, Avoidance, Education, etc)
DIV A and T	Compost Pile / Overhaul Operations	"Monitor Air for CO and other potential Hazards. Wear dust respirators or SCBA during operations. Wear PPE for identified and potential hazards. Refer to IRPG page 86 when working with heavy equipment. Watch for potential flareups or collapse. "
ALL	Roadside Response Safety	Keep all hose, fire tools, equipment out of traffic lanes. Refer to IRPG Page 26
BRANCH I and II	ASH POTS	Beware of burnt-out areas around trees and stumps
BRANCH I	Steep Terrain & Rolling Debris	~ Maintain 8'-10' spacing when working & walking. ~ Don't work above any personnel. ~ Be on the lookout for rolling rocks, debris, or burning material. ~ Evaluate necessity to send personnel in areas with limited access. ~ Post lookouts (IRPG pg 6).
ALL	Mop-up & Rehab	~ Do not work above or below personnel during rehab/mop-up operations. ~ Alert crew personnel of rolling debris by yelling to affected individuals. ~ Position debris that could roll vertically on slope. ~ Wear eye protection.
ALL	Personal Hygiene	~ Don't share personal items such as water bottles communication devices and utensils. ~ Wash hands before meals, and after use of rest room facilities.
BRANCH I	Hazard Trees	~ Follow "Hazard Tree Safety" guidelines, IRPG page 22. ~ Post lookouts, or use a spotter in mop-up areas with personnel. ~ Don't park vehicles or take breaks in high concentrations of hazard trees. ~ Establish trigger points for disengagement during high wind events. ~ Remember that the hazard zone extends a minimum of 2 1/2 tree heights.
ALL	Fireline Hazards	~ Do not work directly above or below personnel during firing and mop-up operations. ~ Watch for falling and rolling debris on steep slopes. ~ Alert crew personnel of rolling debris by yelling to affected individuals. ~ Position debris that could roll vertically on slope. ~ Avoid stepping over debris that could roll by walking around object. ~ Avoid radiant heat by wearing appropriate PPE correctly. ~ Use correct tool for task assigned. ~ Follow power line safety protocol as outlined on page 22 in IRPG. ~ Flag and isolate all HAZMAT and alert all personnel working in Division. ~ Follow WUI recommendations on pages 10-11 in IRPG.
BRANCH I	Heavy Equipment Operations	~ Ensure communications are established with operators. ~ Use hand signals if other communications are unavailable. ~ Maintain a 50'-100' exclusion area around equipment and increase it to 1 1/2 times tree height when in timber. ~ Use a spotter when backing. ~ Avoid working below heavy equipment.
ALL	Fatigue & Over Exertion	~ Drink 1 quart of water each hour during and after work. ~ Rotate crews out of smoky areas. ~ Set a reasonable work pace and allow adequate rest breaks while on the project. ~ Stagger work crews start time to limit fatigue. ~ Use buddy system to monitor personnel of heat related and fatigue issues. ~ Follow work / rest guidelines.

*John W...*

## MEDICAL PLAN (ICS 206)

<b>1. Incident Name:</b> Saddle Ridge	<b>2. Operational Period:</b> Date From: 10/14/19 Time From: 0700	Date To: 10/15/19 Time To: 0700
---------------------------------------	--	------------------------------------

<b>3. Medical Aid Stations:</b>			
Name	Location	Contact Number(s)/Frequency	Paramedics on Site?
LFD RA266 Day / LFD RA7 Night	ICP – Hansen Dam	Command	<input checked="" type="checkbox"/> Yes <input type="checkbox"/> No

<b>4. Transportation (indicate air or ground):</b>			
	Location	Contact Number(s)/Frequency	Level of Service
LAC Helicopter (Hoist)	Barton Heliport – 12605 Osborne St.	Command	<input checked="" type="checkbox"/> ALS <input type="checkbox"/> BLS
LFD / LAC	*** JURISDICTIONAL AGENCY***	Command	<input checked="" type="checkbox"/> ALS <input type="checkbox"/> BLS

<b>5. Hospitals:</b>							
Hospital Name	Address, Latitude & Longitude if Helipad	Contact Number(s)/ Frequency	Travel Time		Trauma Center	Burn Center	Helipad
			Air	Ground			
Henry Mayo Newhall Hospital	23845 West McBean Parkway Valencia, 91355 N34 23.94 / W118 33.11	(661) 200-1601	10	20	<input checked="" type="checkbox"/> Yes Level: <u>2</u>	<input type="checkbox"/> Yes <input checked="" type="checkbox"/> No	<input checked="" type="checkbox"/> Yes <input type="checkbox"/> No
LAC Olive View Medical Center	14445 Olive View Drive Sylmar, 91342 N34 19.61 / W118 26.70	(747) 210-4324	5	10	<input type="checkbox"/> Yes Level: _____	<input type="checkbox"/> Yes <input checked="" type="checkbox"/> No	<input checked="" type="checkbox"/> Yes <input type="checkbox"/> No
West Hills Hospital	7300 Medical Center Dr. West Hills, 91307 N34 12.18 / W118 37.75	(818) 676-4598	10	30	<input type="checkbox"/> Yes Level: _____	<input checked="" type="checkbox"/> Yes <input type="checkbox"/> No	<input checked="" type="checkbox"/> Yes <input type="checkbox"/> No
Dignity Health Northridge Hospital	18300 Roscoe Blvd Northridge, 91328 N34 13.21 / W118 31.95	(818) 885-5396	5	20	<input checked="" type="checkbox"/> Yes Level: <u>2</u>	<input type="checkbox"/> Yes <input checked="" type="checkbox"/> No	<input checked="" type="checkbox"/> Yes <input type="checkbox"/> No
Providence Holy Cross Medical Center	15031 Rinaldi St. Mission Hills, 91345 N 34 16.81 / W 118 27.67	(909) 623-8715	5	15	<input checked="" type="checkbox"/> Yes Level: <u>2</u>	<input type="checkbox"/> Yes <input checked="" type="checkbox"/> No	<input checked="" type="checkbox"/> Yes <input type="checkbox"/> No
LAC + USC Medical Center	1200 North State Street Los Angeles, 90033 N 34 03.345 / W 118 12.48	(323) 226-2622	15	40	<input checked="" type="checkbox"/> Yes Level: <u>1</u>	<input checked="" type="checkbox"/> Yes <input type="checkbox"/> No	<input checked="" type="checkbox"/> Yes <input type="checkbox"/> No

**6. Medical Emergency Procedures:**  
In the event of a medical emergency follow the 8-Step Medical Incident Report, pages 118-119 of the IRPG.

1. Contact Communications
  - a. "Stand-by for Emergency Traffic"
2. Incident Status:
  - a. Severity of Emergency (Red/Yellow /Green)
  - b. Nature of injury/illness/MOI
  - c. Transport request (Air, ground)
  - d. Patient Location (Lat/Long, WGS84)
  - e. Incident name (Geographic name + medical)
  - f. Incident Commander
  - g. Patient Care (provider name)
3. Initial patient assessment - Refer to **Page 106**
4. Develop transport plan
  - a. Air/Ground, Need for hoist, drop point, Helispot
5. Determine need for additional resources
6. Confirm Communications
  - a. A/G EMS Frequencies
7. Contingency Plan
8. Additional Information
  - a. Updates/changes, etc.

**In Camp Emergency:** Contact Medical Unit at ICP

**EMERGENCY REPORTING WORKSHEET**

SEVERITY RED (Immediate) YELLOW (Delayed) GREEN (Minor)

NATURE OF EMERGENCY \_\_\_\_\_

LOCATION OF PATIENT \_\_\_\_\_

TRANSPORTATION REQUESTED BY: AIR \_\_\_ GROUND \_\_\_

POINT OF PICKUP \_\_\_\_\_

WGS84 LAT \_\_\_\_\_ LONG \_\_\_\_\_

PATIENT UNIT ID \_\_\_\_\_

REMINDER: **DO NOT** GIVE PT NAME OVER RADIO

IS AN EMT WITH PATIENT: YES \_\_\_ NO \_\_\_

AGE \_\_\_\_\_ SEX: MALE \_\_\_\_\_ FEMALE \_\_\_\_\_

**ALL EMERGENCIES—Secure the area and identify witnesses for later investigation. Keep an accurate log of events.**

**NOTE: IWI NOTIFICATIONS**

1. Incident Commander
2. Operations
3. Safety Officer
4. Medical Unit Leader

**7. Prepared by (Medical Unit Leader):** Name: K. Litz MEDL / A. Reyes MEDL(t) / R. Wickles MEDL(t) Signature: \_\_\_\_\_

**8. Approved by (Safety Officer):** Name: \_\_\_\_\_ Signature: \_\_\_\_\_

ICS 206 IAP Page \_\_\_\_\_ Date/Time: 10/13/19 / 1900hrs

**INCIDENT RADIO COMMUNICATIONS PLAN** Incident Name: **SADDLE RIDGE** Date/Time Prepared: **10/13/19 2000** Operational Period Date/Time: **10/14/19 @ 0700 - 10/15/19 @ 0700**

**CONTROLLED UNCLASSIFIED INFORMATION//BASIC**

CH	Function	Channel Name/Trunked Talkgroup	Assignment	RX Freq	RX Tone/NAC	TX Freq	TX Tone/NAC	Dev	Pwr	Mode A, D, M	Remarks
<b>VHF</b>											
1	COMMAND	LAC V-3	ALL DIVISIONS	152.5400	Tone 14 151.4	157.8000	Tone 14 151.4	N	H	A	
2	TACTICAL	VFIRE22	DIVISION B/C	154.2650	Tone 6 156.7	154.2650	Tone 6 156.7	N	L	A	NIGHT DIVISION B/C/D/F
3	TACTICAL	VFIRE23	DIVISION D/F	154.2950	Tone 6 156.7	154.2950	Tone 6 156.7	N	L	A	
4	TACTICAL	VFIRE24	UNASSIGNED	154.2725	Tone 6 156.7	154.2725	Tone 6 156.7	N	L	A	
5	TACTICAL	VFIRE25	UNASSIGNED	154.2875	Tone 6 156.7	154.2875	Tone 6 156.7	N	L	A	
6	TACTICAL	VFIRE26	DIVISION S/T	154.3025	Tone 6 156.7	154.3025	Tone 6 156.7	N	L	A	
7	TACTICAL	FCA V-1D	SUPPRESSION REPAIR	155.3250	Tone 6 156.7	155.3250	Tone 6 156.7	N	H	A	
8	TACTICAL	FCA V-2D	UNASSIGNED	155.4000	Tone 6 156.7	155.4000	Tone 6 156.7	N	H	A	
9	TACTICAL	FCA V-3D	DIVISION A	150.7750	Tone 6 156.7	150.7750	Tone 6 156.7	N	H	A	NIGHT DIVISION A/Z
10	TACTICAL	FCA V-4D	DIVISION Z	155.3550	Tone 6 156.7	155.3550	Tone 6 156.7	N	H	A	
11	TACTICAL	NIFC T-1	DIVISION V	168.0500	NONE	168.0500	NONE	N	L	A	NIGHT DIVISION XV
12	TACTICAL	R5 TAC 4	DIVISION X	166.5500	NONE	166.5500	NONE	N	L	A	
13	TACTICAL	CALCORD	MEDICAL TAC	156.0750	Tone 6 156.7	156.0750	Tone 6 156.7	N	H	A	
14	Air-to-Ground	A/G CMD	OPS, BRANCH, & DIVS	167.8125	NONE	167.8125	NONE	N	L	A	
15	Air-to-Ground	A/G TAC	ALL DIVISIONS	168.3375	NONE	168.3375	NONE	N	L	A	
16/20	EMERGENCY	AIR GUARD	EMERGENCY	168.6250	NONE	168.6250	Tone 1 110.9	N	L	A	

**LAFD 800 MHZ System**

800	DISPATCH	LFD T-8	LA CITY DISPATCH	858.4375	Tone 8 103.5	858.4375	Tone 9 103.5	W	H	A	
-----	----------	---------	------------------	----------	-----------------	----------	-----------------	---	---	---	--

Prepared By (Communications Unit Leader): **Mike Horst, COML (661) 645-4254 / Travis Wight, COML (562) 762-7304** Incident Location: **Sylmar, CA**  
 Cnty: **Los Angeles** Latitude Longitude **N W**

**CONTROLLED UNCLASSIFIED INFORMATION//BASIC**

# LACOFD FINANCE MESSAGE



**ALL LA COUNTY FIRE  
RESOURCES ARE TO  
COMPLETE A 662  
DURING DEMOB AND  
SUBMIT TO LACOFD  
FINANCE PRIOR TO  
LEAVING INCIDENT.**

## **PUBLIC INFORMATION OFFICE**

**MEDIA** - The California Penal Code Section 409.5(d) allows the news media to enter the scenes of the disaster, riot or civil disturbance. Properly identified members of the news media should not be restricted from entering locations specified within the code. However, this does not include crime scenes, private property and does not imply that the news media may interfere with incident operations while they are in the area of concern.

**NOTE:** News Media Interview Requests shall be forwarded up the chain of command to have an Incident PIO dispatched to handle the request. This ensures consistent messaging.

**SOCIAL MEDIA POLICY** - While assigned to the Saddle Ridge Fire Incident, members shall adhere to your home jurisdiction Social Media Policy.

**PHOTOGRAPHS AND VIDEOS OF INCIDENT** - We are in a new era of media. Media no longer means news/broadcast industry, but now refers to anyone that has the capability to shoot video, photographs and post them onto social media sites in a matter of minutes. Posting inappropriate video, photo or social media comments could expose oneself to unwanted ramifications. It may be unsafe to shoot photos of video and a firefighter who is concentrating on a camera loses situational awareness.

**LOST AND FOUND** - The Information Trailer will manage lost and found items for the incident. If you lost an item, please leave your contact a PIO and what you have lost. If you found an item, bring to Incident Information Trailer.

Incident Info: [LAFD.org/News](http://LAFD.org/News) & [fire.lacounty.gov](http://fire.lacounty.gov)

Twitter: @LAFD & @LACOFDPIO @Angeles\_NF

Facebook: @LosAngelesFireDepartment @LACoFD @AngelesNationalForest



## ***TRAINING SPECIALIST MESSAGE***

**All Saddle Ridge Incident Trainees  
Beat the Rush!!!**

**In order to receive documented credit for your training assignment you must register with the incident Training Specialist.**

**The Training Specialist is available immediately following the morning Briefing.**

***In order to receive documented credit for your training assignment – you must close out with the Training Specialist before you Demob!!***

**Bring the following to the “exit interview”**

- ***A completed and signed ICS 225 Performance Evaluation***
- ***A completed Evaluator’s Recommendation***

***Forms are available at the Training Office***

***Remember: No documentation – it didn’t happen!***

Claudia Soiza - 949 632-7813



## Saddle Ridge Fire Suppression Repair Guidelines

### **Objectives**

1. Minimize surface and gully erosion.
2. Minimize sediment delivery into stream channels.
3. Restore conditions to pre-fire drainage patterns.
4. Restore topsoil and soil cover, expediting revegetation.
5. Remove all suppression associated trash.

### **Special Provisions**

1. Motorized equipment should be thoroughly cleaned to prevent noxious weed spread before entering and after exiting the ANF.
2. Any reopened preexisting dozer lines or new handlines have been cleared for suppression repair work. New dozer lines, safety zones, helispots must be cleared by READs prior to suppression repair work.
3. Avoid all sensitive resources identified by orange and blue flagging.

### **ROADS**

1. Existing dirt surfaced roads used for access will be returned as close to pre-incident condition as possible.
2. Existing roads that are closed, but reopened for current incident use, will be returned as close to pre-incident condition as possible.
3. Remove woody debris, logs, rocks and other obstructions large enough to block water flow from drainage areas along roads and culverts.

### **DOZER LINES**

1. Dozer lines will be treated by pulling outside berms back into the control line, re-contouring or out-sloping the surface to allow water to quickly drain off of the dozer line.
2. Waterbars are to be built on slopes greater than 5% and the outlet should drain into the green whenever possible.
3. Waterbars will consist of a minimum of a six inch (6") cut into the firm bed of the control line and have a berm with a compacted height of no less than twelve inches (12") (see figure 1).
4. Waterbars will be constructed diagonally across should be skewed horizontally from the fall line of the slope (not the dozer line) approximately 30 degrees from horizontal and drained away from the fire burned area if possible.
5. Utilize natural rolls and dips whenever possible.
6. Scatter branches, wood, rock, brush or other material to naturalize the fire line and further minimize soil movement. Scattered material should be placed at critical intersections of roadways.
7. When it will not compromise the effectiveness of containment lines, hand crews may be used to augment scattering of wood debris/slash to naturalize the dozer line and further minimize soil erosion.
8. Hand crews may be used to construct waterbars on slopes greater than 50% (with little to no rock) or in areas too hazardous for safe equipment operation, or in areas where dozer use may create additional surface disturbance.
9. When dozer lines follow a ridge where there is no vegetation on either side, or where there is unburned vegetation on both sides (indirect line), re-contouring and waterbars should be designed to divert water equally to both sides of the ridge.
10. Remove all trash and equipment associated with dozer equipment maintenance.
11. Vertical slashing, chunking or berming shall be used in combination with the above techniques to prevent access for unauthorized OHV use at critical intersections of roadways and trails.
12. Entrances to dozer lines will be blocked from OHV travel by placement of berms (over 3 ft. high).

### **HAND LINES**

1. Use hand tools or chainsaws only on handlines, not dozers or excavators.
2. Trenching (if any) should be filled in with displaced dirt and the hand line restored to blend with the undisturbed soil contours.
3. Waterbars for hand lines should be cut to a depth equal to the width of a standard fire shovel.
4. Waterbars should be skewed horizontally from the fall line of the slope (not the hand line) approximately 15 to 20 degrees from horizontal and drained away from the fire burned area if possible.
5. The outside end of the waterbar must be open and should discharge into an area where the ground surface is protected by vegetation that is unburned, if possible.
6. When hand lines follow a ridge where there is no vegetation either side, or where there is unburned vegetation on both sides (indirect line), re-contouring and waterbars should be designed to divert water equally to both sides of the ridge.
7. Utilize natural rolls and dips whenever possible.

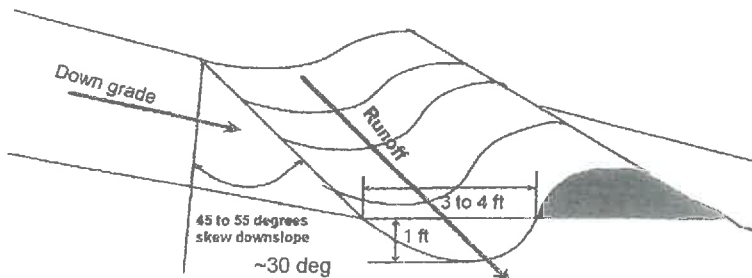
Saddle Ridge Suppression Repair, October 12, 2019, CA-LFD-001582

8. Scatter branches, wood, rock, sod, pine, needles or other material to naturalize the fire line and minimize erosion. Scattering of material should be focused at intersections of roads and trails, disguising visible portions of the line from public view.
9. In some cases, chunking or berming may be used in combination with the above techniques to prevent access for unauthorized OHV use.
10. Remove all trash, equipment, and flagging.

**WATERBARS**

1. Water-bars should only be used on steep slopes and only when soil re-contouring (putting the soil disturbed by suppression activities back in place) alone is not sufficient to prevent erosion.
2. Water-bars for hand lines should be cut to a depth equal to the width of a standard fire shovel.
3. Water-bars for dozer lines should be no more than 1 foot deep and 2 feet wide.
4. Water-bars will be constructed diagonally across the control line at an angle of thirty-five to forty degrees. The outside end of the water-bar must be open and should discharge into an area where the ground surface is protected by vegetation that is unburned, if possible. Gravel or small cobble size rock armoring at the discharge end of the water-bar will also prevent erosion off the side of the water-bar.
5. Water-bars should be constructed at logical discharge points and guided by the spacing criteria as follows:

Fireline slope %	Maximum Distance Apart (feet)	<i>Recommended spacing for water-bars on firelines. Water-bars should be no further apart than this, but they may be closer. When in doubt, put in more.</i>
10-14 .....	150	
15-20 .....	90	
21-40 .....	50	
41+ .....	25	



**WATERCOURSE**

1. *Mitigation of suppression impacts will be determined and directed by the Resource Advisor and/or designers.*

**HELISPOTS, HELIPORTS, SAFETY ZONES, DROP POINTS, AND OTHER CLEARINGS**

1. All clearings constructed to support suppression activities will be returned as closely to pre-incident conditions as possible.
2. At a minimum, berms will be pulled or raked back into the site, if needed the site will be crowned to facilitate surface drainage.
3. In some cases, chunking, berming or other barriers may be used in combination with the above techniques to prevent access for unauthorized OHV use.

**IMPROVEMENTS**

1. Improvements such as fences, gates, guzzlers, flood control basins, drainage structures, drainage channel, culverts, and paved roads damaged by suppression activities will be repaired to pre-fire conditions.

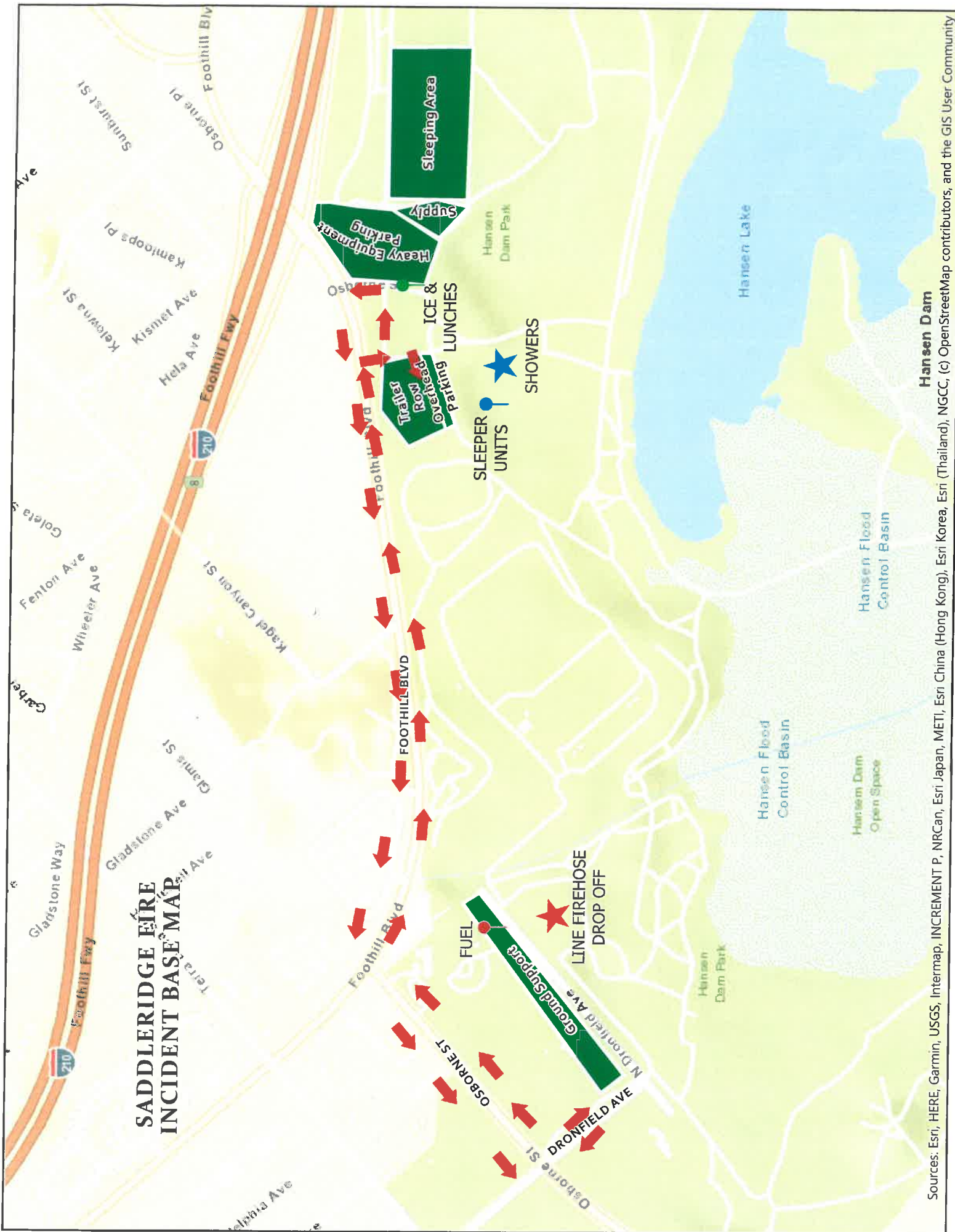
**RECREATION SITES**

1. Replace any barriers removed for access.

**VEHICLE BARRIERS** (Berms, gate, locking system etc)

1. Restore to pre-fire condition.

# SADDLERIDGE FIRE INCIDENT BASE MAP



Sources: Esri, HERE, Garmin, USGS, Intermap, INCREMENT P, NRCan, Esri Japan, METI, Esri China (Hong Kong), Esri Korea, Esri (Thailand), NGCC, (c) OpenStreetMap contributors, and the GIS User Community









