

# **INCIDENT ACTION PLAN**

# **SADDLE RIDGE INCIDENT**

CA-LFD-001582

Fed PCode PNMU9C20 (1502)



## **OPERATIONAL PERIOD**


**10/15/2019 0700**

**to**

**10/16/2019 0700**



## ORGANIZATION ASSIGNMENT LIST (ICS 203)

<b>1. Incident Name:</b> Saddle Ridge		<b>2. Operational Period: Date From:</b> 10/15/2019 Time From: 0700		<b>Date To:</b> 10/16/2019 Time To: 0700	
<b>3. Incident Commander(s) and Command Staff:</b>			<b>7. Operation Section:</b>		
IC/UC's	Rose, Strawhun, Pena	Operations	Oscar Vargas, Guy Tomlinson, Mike Inman		
Deputy	Hissong, McCloud, Whittle	Deputy Operations	Planning Ops: Smith, Ramirez, Zipperman (t)		
Safety Officer	Jack Wise, Mitch Brookhyser (t)	Night Ops	Tom Stukey		
Information Officer	Andrew Mitchell,	Staging Area	Sara Rathbun		
Liaison Officer	Victor Garcia, Dayton Calhoun (t)	<b>Branch</b>	<b>I</b>	<b>Matt Conklin</b>	
<b>4. Agency/Organization Representatives:</b>		Division/Group	A/Z	Ron Gregor	
Agency/Organization	Name	Division/Group	X	Craig Martin, Greg Stenmo (t)	
ANF/LACounty/LACity	Robert Garcia/David Richardson/ Ralph Terrazas	Division/Group	V	Curt Wisman	
Cal Fire	Tony Jones	Division/Group			
Cal OES	David Stone	Division/Group			
CHP	Perry Haggard	Division/Group			
	Kim	<b>Branch</b>			
LASD	Tina Arevalo	Division/Group	B/C/D/F	Daniel McNamara	
LAPD	Sgt Bunch	Division/Group	S/T	Darus Ane	
American Red Cross	Bernie Lazari	Staging Area	STAGING	Sara Rathbun (STAM)	
LA Animal Shelters	Lt. Julian	Division/Group	Suppression Repair	Renee Henault, John Owings, Matt Lipson	
Public Health	Mike Rodgers	<b>Branch</b>			
So Cal Gas	Furguson	Division/Group	A/Z NIGHT	Dave Edwards	
LADWP Electrical	Billy Barnes	Division/Group	X/V NIGHT	Jim Underwood	
LADWP Water	Jeral Pafford	Division/Group	B/C/D/F NIGHT	Dan McNamara	
SCE	Troy Whitman	Division/Group	S/T NIGHT	Darus Ane	
Mayor's Office	Thalia Polychronis	Division/Group			
BOS	Jarrob Degonia	Division/Group			
		Division/Group			
<b>5. Planning Section:</b>		Division/Group			
Chief	Nick Duvally, Mitch Diehl	Division/Group			
Deputy	Danny Douglas	Division/Group			
Resource Unit	Kristen Allison, Lauren Dale, Kenneth Cook (t), Rob Scott (t),	Staging Area			
Situation Unit	John Hamer, Tom Gikas (t)	Division/Group			
Documentation Unit	Wally Collins	Division/Group			
Demobilization Unit	Jackie Switzler	Division/Group			
GISS	Ed Llamas, Rene Gonzalez	Staging Area			
FBAN	Garrett Hazelton	Division/Group			
IMET	Rich Thompson	Division/Group			
Training Tech Spec	Claudia Soiza	<b>Air Operations Branch</b>	<b>Director:</b>	<b>Brad Idol/Dorman(t)</b>	
SCKN	Pat O'Neil (t), Micah Carlson (t), Justin Baclat (t)	Air Support Group Supervisor			
<b>6. Logistics Section</b>			Helibase Manager		
Chief	Mike Takeshita, Rich Moody (t)		Air Attack		
Supply Unit	Tamara Hanna (t)	<b>8. Finance/Administration Section:</b>			
Facilities Unit	Brian Labrie	Chief	Pascal D'souza, Judy Reynolds, Muriel Jones (t)		
Food Unit	Ryan O'Gorman	Time Unit	Jessica Luna		
Communications Unit	Mike Horst, Sara Rathburn (t)	Procurement Unit			
Medical Unit	Adrian Reyes (t)	Comp/Claims Unit			
Base Camp Manager	David Godoy, Kathleen Delos Reyes (t)	Cost Unit	Tammy Hasert, Vickie Wilson		
Ground Support	Ron Durbin (t)				
Equipment Mgr	Phillip Martinez				
Ordering Manager	Juan Cueva (t), Theron Cheatham (t), JD Fox (t)				
<b>Prepared By: Name:</b>	Nick Duvally, Mitch I	<b>Position/Title:</b>	PSC	<b>Signature:</b>	
<b>ICS 203</b>	<b>Date/Time:</b>	10/14/2019	2300 hours		



# INCIDENT Weather Forecast

**FORECAST NO:** 4  
**PREDICTION FOR:** Day/Night **SHIFT**  
**SHIFT DATE:** 0700 10/15/19 to 0700 10/16/19

**NAME OF FIRE:** Saddlebridge

**UNIT:** LA County Fire

**SIGNED:** Richard Thompson

**TIME AND DATE**  
**FORECAST ISSUED:** 10/14/19 @ 1900

**Incident Meteorologist**

**WEATHER DISCUSSION:** Weak offshore flow will prevail this morning, but will shift weakly onshore this afternoon and evening. For tonight, winds will generally be light and variable. Warmer and drier conditions can be expected today. For tonight, humidity recovery will be poor.

Warm and dry conditions will continue through Wednesday. For Thursday through Saturday, slightly cooler conditions are expected with some gusty northerly winds.

**WEATHER FORECAST FOR TODAY:**

**WEATHER:** Mostly sunny.

**MAX TEMPERATURES:** 78-86 lower elevations  
70-78 ridges/upper slopes

**MIN HUMIDITY:** 10-20%

**EYE LEVEL WINDS:**

**RIDGETOP -** 0700-1000: Northeast 5-9 MPH Gust 12-15 MPH.  
1000-1500: Northeast 3-6 MPH Gust 9-12 MPH.  
1500-1900: Southwest 2-5 MPH Gust 7-10 MPH.

**SLOPE/VALLEY -** 0700-1000: Northeast 2-4 MPH Gust 6 MPH.  
1000-1400: Variable 2-4 MPH.  
1400-1900: Southerly/upcanyon 2-5 MPH Gust 8 MPH.

**STABILITY/INVERSION:** Below 1000 ft AGL, increasing to 7500 ft AGL in the afternoon.

**OUTLOOK FOR TONIGHT:**

**WEATHER:** Mostly clear.

**MIN TEMPERATURES:** 50-56...except 56-64 ridges/upper slopes.

**MAX HUMIDITY:** 25-35% lower elevations  
15-25% ridges/upper slopes

**EYE LEVEL WINDS:**

**RIDGETOP -** 1900-2100: Southwest 2-5 MPH Gust 7-10 MPH.  
2100-0700: Northeast 2-4 MPH Gust 6-9 MPH.

**SLOPE/VALLEY -** 1900-2100: Southerly/upcanyon 2-4 MPH Gust 6 MPH.  
2100-0700: Downslope/downcanyon 2-4 MPH.

**STABILITY/INVERSION:** 6000 ft AGL early, decreasing to below 1000 ft AGL.

# FIRE BEHAVIOR FORECAST

FORECAST NUMBER: 005

TYPE OF FIRE: Wildfire

FIRE NAME: Saddleridge

OPERATIONAL PERIOD: October 15, 2019

TIME ISSUED: 2000 October 14, 2019

UNIT: LAFD, ANF, LAC

SIGNED: GARRETT HAZELTON

Typed/printed: Garrett Hazelton FBAN(T)

## INPUTS

### WEATHER SUMMARY:

**Day Time:** Mostly sunny with temps around 83° at lower elevations and 74° on ridges and slopes.  
Relative humidity: min 10%

Ridgetop Winds: 1000-1500 NE 3-6 MPH Gust to 12; 1500-1900 SW 2-5 mph Gust to 12 MPH

Eye Level Winds: 1000-1500 Variable 2-4 MPH; 1400-1900 Southerly/upcanyon 2-5 MPH Gust to 8 MPH

**Night Time:** Mostly clear with temps around 55° expect around 60° on ridges/upper slopes  
Relative humidity: min 25% lower elevations; min 15% ridges/slopes

Ridgetop Winds: 1900-2100 SW 2-5 MPH Gust to 10 MPH; 2100-0700 NE 2-4 MPH Gusts to 9 MPH

Eye Level Winds: 1900-2100 Southerly/upcanyon 2-4 MPH Gusts to 6 MPH; 2100-0700 Downslope 2-4 mph

## OUTPUTS

### FIRE BEHAVIOR

#### GENERAL:

##### Fuels:

As the fire season continues fuels are becoming prime for ignition and large fire development. LFM moistures have almost reached their lowest values attainable. 1000 Hr fuels are below average at the 10<sup>th</sup> percentile. Both the LFM and 1000Hr fuels reached their critical threshold a week before the fire started. The operational periods weather will only serve to increase fire danger as it relates to fuel conditions.

#### SPECIFIC:

Probability of Ignition: up to 65% at peak fire weather

Burning Index: 107 up 218%

Spotting Potential: 1/2 mile possible from ridge tops

ERC Forecast: 90<sup>th</sup> Percentile

**All Branches Day:** As the remote and isolated fuel sources continue in the smoldering phase the possibility ignition is increased with the warmer and dryer weather. Solar heating of the blacked burned area creates greater occurrence of vertical whirls taking the last remaining embers across the line into unburned fuels. Should any new ignitions occur within the operational area they will be resistant to control efforts when in head fire alignment.

**All Branches Night:** The concern through the night is the diurnal wind shift expected to occur around 2400. The burned-out aerial fuels have had a few cycles of wind shifts weakening already burned limbs and branches; creating operational hazards and new ignition sources.

**AIR OPERATIONS:** Clear skies and diminished wind speeds will favorable conditions for air resources.

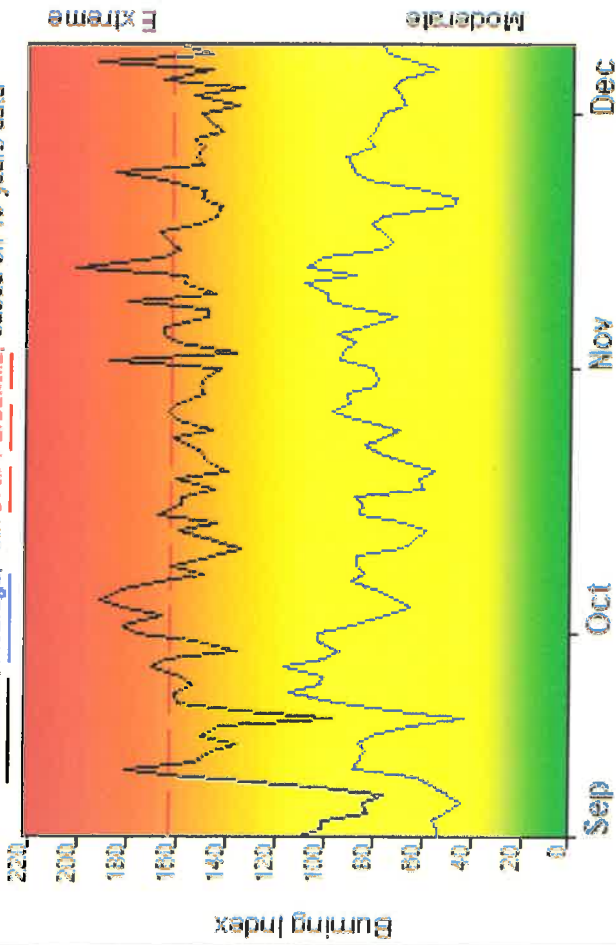
### SAFETY:

*"Fatigue is a particular problem on campaign-type fires . . . It creates the walking dead."*

-National Interagency Fire Center; Wildland Firefighter Safety Awareness Study 1996

## FIRE DANGER -- LA Zone Review

Maximum, Average, and 97th Percentile, based on 10 years data



## Fire Danger Area:

- LA Basin Fire Danger
- LA Basin Forecast Zone
- SIG-LA Basin WX Stations
  - Meets NWCG Wx Station Standards

## Fire Danger Interpretation:

- EXTREME** -- Use extreme caution
- High** -- Watch for change
- Moderate** -- Lower Potential, but always be aware

Maximum -- Highest Burning Index by day for 2009 - 2018

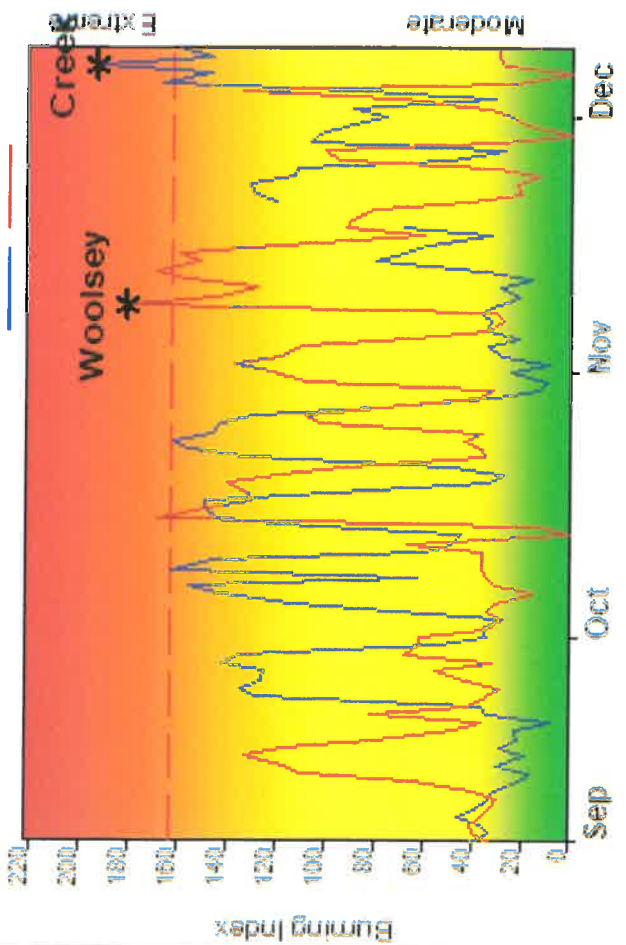
Average -- shows peak fire season over 10 years (925 observations)

97th Percentile -- 3% of the 925 days from 2009 - 2018 had an Burning Index above 162

## Local Thresholds - Watch out: Combinations

- of any of these factors can greatly increase fire behavior:
- 20+ Wind Speed over 30 mph, RH less than 20%,
- Temperature over 85, Burning Index over 77

## Years to Remember: 2017 2018



## Remember what Fire Danger tells you:

- Burning Index gives day-to-day fluctuations calculated from 2 pm temperature, humidity, wind, daily temperature & rh ranges, and precip duration.
- Wind is part of BI calculation.
- Watch local conditions and variations across the landscape -- Fuel, Weather, Topography.
- Listen to weather forecasts -- especially WIND.

## Past Experience:

- Rates of Spread > 160 ch/hr
- Spotting up to 0.5-1 Mile Ahead of Fire Front
- Eye Level Wind Speed > 7 MPH
- Live Fuel Moistures < 75%
- Fine Fuel Moistures < 5%
- Active Night Burning Conditions with RH < 30%
- Non-Wind Driven Fires: Look for variation on the fire ground Identify the alignment of wind, slope and solar pre-heating

Responsible Agency: LA County

FF-4.2 build 24.19 06/29/2019-21:13 (C:\Users\Garrett.Harston)...LA Basin 2019\_10 Year

Fuel Model: B - California Chaparral

Design by NWCG Fire Danger Working Team



# ASSIGNMENT LIST (ICS 204 WF)

CONTROLLED UNCLASSIFIED  
INFORMATION//BASIC

<b>1. Incident Name:</b> <p style="text-align: center;"><b>Saddle Ridge</b></p>	<b>2. Operational Period:</b> Date From: 10/15/19    Date To: 10/16/19 Time From: 0700        Time To: 0700	<b>3. Branch</b> <b>Division</b> <p style="text-align: center;"><b>I</b>                                      <b>X</b></p>
--	---	---

<b>4. Operations Personnel:</b>		<b>Page 1 of 1</b>	<b>X-ray</b>
Operations Section Chief: <b>Oscar Vargas, Guy Tomlinson, Mike Inman</b>		Night Ops: <b>Tom Stukey</b>	
Branch Director: <b>Matt Conklin</b>		Branch Safety:	
Division/Group Supervisor: <b>Craig Martin, Greg Stenmo (t)</b>		Air Attack:	

5. Resources Assigned:	** Resources Below in Bold are 12 Hour **							
Resource Identifier	ALS	LWD	Leader	Personnel	Request #	Hours	Reporting Location	
<b>CRW BEAR DIVIDE IHC</b>			<b>Brian Anderson</b>	<b>20</b>	<b>C-39</b>	<b>0700-1900</b>	<b>ICP</b>	
<b>CRW EL DORADO IHC</b>			<b>Aaron Humphrey</b>	<b>21</b>	<b>C-11</b>	<b>0700-1900</b>	<b>ICP</b>	
<b>CRW VISTA GRANDE IHC</b>			<b>Brett Pascale</b>	<b>18</b>	<b>C-1</b>	<b>0700-1900</b>	<b>ICP</b>	
<b>CRW MILLCREEK IHC</b>			<b>John Ellison</b>	<b>19</b>	<b>C-2</b>	<b>0700-1900</b>	<b>ICP</b>	
<b>CRW KLAMATH CREW 14</b>			<b>Andy Zink</b>	<b>19</b>	<b>C-7</b>	<b>0700-1900</b>	<b>ICP</b>	
<b>CRW UKONOM CREW 2</b>			<b>Joel Berg</b>	<b>20</b>	<b>C-8</b>	<b>0700-1900</b>	<b>ICP</b>	
<b>DOZ ANF DOZER 10</b>			<b>Ryan Walker</b>	<b>4</b>	<b>E-213</b>	<b>0700-1900</b>	<b>ICP</b>	
<b>DOZ ANF DOZER 12</b>			<b>Mike Nott</b>	<b>2</b>	<b>E-214</b>	<b>0700-1900</b>	<b>ICP</b>	
<b>DOZ LPF DOZER 3</b>			<b>Michael Fuerch</b>	<b>3</b>	<b>E-17</b>	<b>0700-1900</b>	<b>ICP</b>	
<b>DOZ LPF DOZER 4</b>			<b>Dan Fawcett</b>	<b>2</b>	<b>E-18</b>	<b>0700-1900</b>	<b>ICP</b>	
<b>WT PVT CLEER</b>			<b>Dana Cleer</b>	<b>2</b>	<b>E-281</b>	<b>0700-1900</b>	<b>ICP</b>	
<b>WT PVT ALLEN</b>			<b>Dick Allen</b>		<b>E-279</b>	<b>0700-1900</b>	<b>ICP</b>	
<b>HEQB PEREZ</b>				<b>1</b>		<b>0700-1900</b>	<b>ICP</b>	
<b>FEMT MARTINEZ O-41</b>						<b>0700-1900</b>	<b>ICP</b>	
<b>FEMT PRADO O-42</b>						<b>0700-1900</b>	<b>ICP</b>	
<b>SOFR GILES</b>			<b>Dan Giles</b>	<b>1</b>	<b>O-46</b>	<b>0700-1900</b>	<b>ICP</b>	
<b>SOFR BIRG (t)</b>			<b>Jeff Birg</b>	<b>1</b>	<b>O-344</b>	<b>0700-1900</b>	<b>ICP</b>	

**6. Work Assignments:**  
Improve established hand lines. Utilize heavy equipment in coordination with Suppression Repair.

**7. Special Instructions:**  
Refill Forest Service pre-attack tanks.

8. Communications							
Name	Ch	Function	Rx Freq	Rx Tone	Tx Freq	Tx Tone	Notes
LAC V-3	1	COMMAND	152.5400 N	(T14) 151.4	157.8000 N	(T14) 151.4	
R5 TAC 4	12	TACTICAL	166.5500 N	NONE	166.5500 N	NONE	
CALCORD	13	MEDICAL TAC	156.0750 N	(T6) 156.7	156.0750 N	(T6) 156.7	
A/G CMD	14	AIR TO GROUND	167.8125 N	NONE	167.8125 N	NONE	BRANCH, OPS, DIVS
A/G TAC	15	AIR TO GROUND	168.3375 N	NONE	168.3375 N	NONE	ALL DIVISIONS
AIR GUARD	16	EMERGENCY	168.6250 N	NONE	168.6250 N	(T1) 110.9	

Signature: \_\_\_\_\_

ICS 204

Date/Time: 10/14/2019 2200

Personnel Count: 133



# ASSIGNMENT LIST (ICS 204 WF)

CONTROLLED UNCLASSIFIED  
INFORMATION//BASIC

<b>1. Incident Name:</b> <p style="text-align: center;"><b>Saddle Ridge</b></p>	<b>2. Operational Period:</b> Date From: 10/15/19      Date To: 10/16/19 Time From: 0700              Time To: 0700	<b>3. Branch</b> <b>Division</b> <p style="text-align: center;"><b>I</b>                                      <b>V</b></p>
--	---	---

<b>4. Operations Personnel:</b>		<b>Page 1 of 1</b> <b>Victor</b>
Operations Section Chief: <b>Oscar Vargas, Guy Tomlinson, Mike Inman</b>	Night Ops: <b>Tom Stukey</b>	
Branch Director: <b>Matt Conklin</b>	Branch Safety:	
Division/Group Supervisor: <b>Curt Wisman</b>	Air Attack:	

<b>5. Resources Assigned:</b>		<b>** Resources Below in Bold are 12 Hour **</b>					
Resource Identifier	ALS	LWD	Leader	Personnel	Request #	Hours	Reporting Location
<b>STC STF 4631C</b>			<b>Michael Scheu</b>	<b>27</b>	<b>E-267</b>	<b>0700-1900</b>	<b>ICP</b>
<b>STC CNF 6631C</b>				<b>21</b>	<b>E-1</b>	<b>0700-1900</b>	<b>ICP</b>
<b>CRW ARROWHEAD IHC</b>			<b>Joe Suarez/Jeremy Loid</b>	<b>15</b>	<b>C-41</b>	<b>0700-1900</b>	<b>ICP</b>
<b>CRW GROVELAND IHC</b>			<b>Steven Marks</b>	<b>19</b>	<b>C-5</b>	<b>0700-1900</b>	<b>ICP</b>
<b>WT ANF 212</b>			<b>Freddie Hernandez</b>	<b>2</b>	<b>E-216</b>	<b>0700-1900</b>	<b>ICP</b>
<b>WT CNF 245</b>			<b>T. Downs</b>	<b>2</b>	<b>E-12</b>	<b>0700-1900</b>	<b>ICP</b>
<b>WT LFD 77</b>			<b>Mike Marsh</b>	<b>2</b>	<b>E-123</b>	<b>0700-1900</b>	<b>ICP</b>
<b>SOFR COOK</b>			<b>Mark Cook</b>	<b>1</b>	<b>O-45</b>	<b>0700-1900</b>	<b>ICP</b>

**6. Work Assignments:**  
Reinforce previously constructed line, mop up as appropriate with personnel safety considerations.  
Backhaul accountable property to ICP.

**7. Special Instructions:**  
Refill Forest Service pre-attack tanks.

<b>8. Communications</b>							
Name	Ch	Function	Rx Freq	Rx Tone	Tx Freq	Tx Tone	Notes
LAC V-3	1	COMMAND	152.5400 N	(T14) 151.4	157.8000 N	(T14) 151.4	
NIFC T-1	11	TACTICAL	168.0500 N	NONE	168.0500 N	NONE	
CALCORD	13	MEDICAL TAC	156.0750 N	(T6) 156.7	156.0750 N	(T6) 156.7	
A/G CMD	14	AIR TO GROUND	167.8125 N	NONE	167.8125 N	NONE	BRANCH, OPS, DIVS
A/G TAC	15	AIR TO GROUND	168.3375 N	NONE	168.3375 N	NONE	ALL DIVISIONS
AIR GUARD	16	EMERGENCY	168.6250 N	NONE	168.6250 N	(T1) 110.9	

Signature: \_\_\_\_\_

**ICS 204**                                      Date/Time: 10/14/2019 2200                                      Personnel Count: 89

# ASSIGNMENT LIST (ICS 204 WF)

CONTROLLED UNCLASSIFIED  
INFORMATION//BASIC

<b>1. Incident Name:</b> <p style="text-align: center;"><b>Saddle Ridge</b></p>	<b>2. Operational Period:</b> Date From: 10/15/19    Date To: 10/16/19 Time From: 0700        Time To: 0700	<b>3. Branch</b> <b>Division</b>  <p style="text-align: center;"><b>B/C/D/F</b></p>
--	---	---

<b>4. Operations Personnel:</b>		Page 1 of 1
Operations Section Chief: <b>Oscar Vargas, Guy Tomlinson, Mike Inman</b>	Night Ops: <b>Tom Stukey</b>	
Branch Director:	Branch Safety:	
Division/Group Supervisor: <b>Daniel McNamara</b>	Air Attack:	

<b>5. Resources Assigned:</b>		<b>** Resources Below in Bold are 12 Hour **</b>					
Resource Identifier	ALS	LWD	Leader	Personnel	Request #	Hours	Reporting Location
<b>STA LFD 1007A</b>			<b>Richard Fields</b>	<b>22</b>	<b>E-42</b>	<b>0700-1900</b>	<b>ICP</b>
STF LFD 1011F			Rich Diede	13		0700-0700	ICP
SOFR ALEXIOU			John Alexiou	1		0700-0700	ICP
SOFR HARMS			Jeff Harms	1	O-346	0700-0700	ICP

**6. Work Assignments:**  
 Patrol assigned divisions.  
 Mop up areas of concern as appropriate.  
 Address citizen smoke concerns and mitigate issues as can be accomplished.

**7. Special Instructions:**  
 Safety Officers Alexiou and Harms are shared with Division S/T

**8. Communications**

Name	Ch	Function	Rx Freq	Rx Tone	Tx Freq	Tx Tone	Notes
LAC V-3	1	COMMAND	152.5400 N	(T14) 151.4	157.8000 N	(T14) 151.4	
VFIRE22	2	TACTICAL	154.2650 N	(T6) 156.7	154.2650 N	(T6) 156.7	
CALCORD	13	MEDICAL TAC	156.0750 N	(T6) 156.7	156.0750 N	(T6) 156.7	
A/G CMD	14	AIR TO GROUND	167.8125 N	NONE	167.8125 N	NONE	BRANCH, OPS, DIVS
A/G TAC	15	AIR TO GROUND	168.3375 N	NONE	168.3375 N	NONE	ALL DIVISIONS
AIR GUARD	16	EMERGENCY	168.6250 N	NONE	168.6250 N	(T1) 110.9	

<b>ICS 204</b>	Date/Time: 10/14/2019 2200	Signature: _____
		Personnel Count: 37

# ASSIGNMENT LIST (ICS 204 WF)

CONTROLLED UNCLASSIFIED  
INFORMATION/BASIC

<b>1. Incident Name:</b> <p style="text-align: center;"><b>Saddle Ridge</b></p>	<b>2. Operational Period:</b> Date From: 10/15/19      Date To: 10/16/19 Time From: 0700              Time To: 0700	<b>3. Branch</b> <b>Division</b> <p style="text-align: center;"><b>S/T</b></p>
--	---	---

Page 1 of 1

<b>4. Operations Personnel:</b>	
Operations Section Chief: <b>Oscar Vargas, Guy Tomlinson, Mike Inman</b>	Night Ops: <b>Tom Stukey</b>
Branch Director:	Branch Safety:
Division/Group Supervisor: <b>Darus Ane</b>	Air Attack:

<b>5. Resources Assigned:</b>		<b>** Resources Below in Bold are 12 Hour **</b>					
Resource Identifier	ALS	LWD	Leader	Personnel	Request #	Hours	Reporting Location
<b>STA OES 1860A</b>			<b>Phil McQuade</b>	<b>22</b>	<b>E-50</b>	<b>0700-1900</b>	<b>ICP</b>
STC MVU 9331C					E-60	0700-0700	ICP
STC RRU 9310C			Bill Lawe	17	E-61	0700-0700	ICP
STC TUU 9411C					E-172	0700-0700	ICP
STG RRU 9315G			Ray Cordoba		C-17	0700-0700	ICP
STG RRU 9318G			Kevin Krauss	32	C-24	0700-0700	ICP
<b>WT LAC 128</b>			<b>Rob Fisher</b>		<b>E-257</b>	<b>0700-1900</b>	<b>ICP</b>
<b>WT 8842 PVT</b>			<b>Paul Sobyra</b>	<b>2</b>	<b>E-15</b>	<b>0700-1900</b>	<b>ICP</b>
<b>WT SNF 23</b>			<b>Robert McDonald</b>	<b>2</b>	<b>E-16</b>	<b>0700-1900</b>	<b>ICP</b>
<b>WT PVT LITTLE BIG MAN</b>				<b>1</b>	<b>E-264</b>	<b>0700-1900</b>	<b>ICP</b>
EXC LAC EXCAVATOR 25			Doug Moore		E-294	0700-0700	ICP
HEQB SHUFORD O-244			Dan Shuford	1	O-244	0700-0700	ICP
SOFR ALEXIOU			John Alexiou	1		0700-0700	ICP
SOFR HARMS (t)			Jeff Harms	1	O-346	0700-0700	ICP

**6. Work Assignments:**  
Mop up 300' or more, as needed, from control lines.  
Tactical Patrol.  
Backhaul trash and supplies.

**7. Special Instructions:**  
Be aware of respiratory hazard associated with mulch pile.  
Stay uphill/upwind if possible.  
Safety Officers Alexiou and Harms are shared with Division S/T

<b>8. Communications</b>							
Name	Ch	Function	Rx Freq	Rx Tone	Tx Freq	Tx Tone	Notes
LAC V-3	1	COMMAND	152.5400 N	(T14) 151.4	157.8000 N	(T14) 151.4	
VFIRE26	6	TACTICAL	154.3025 N	(T6) 156.7	154.3025 N	(T6) 156.7	
CALCORD	13	MEDICAL TAC	156.0750 N	(T6) 156.7	156.0750 N	(T6) 156.7	
A/G CMD	14	AIR TO GROUND	167.8125 N	NONE	167.8125 N	NONE	BRANCH, OPS, DIVS
A/G TAC	15	AIR TO GROUND	168.3375 N	NONE	168.3375 N	NONE	ALL DIVISIONS
AIR GUARD	16	EMERGENCY	168.6250 N	NONE	168.6250 N	(T1) 110.9	

**9. Prepared by: Name:** Kristen Allison, Lauren Dale, Kenneth Cook (t), Rob Scott (t),                      RESL                      Signature: \_\_\_\_\_

**ICS 204**                      Date/Time: 10/14/2019 2200                      Personnel Count: 79

# ASSIGNMENT LIST (ICS 204 WF)

CONTROLLED UNCLASSIFIED  
INFORMATION//BASIC

<b>1. Incident Name:</b>	<b>2. Operational Period:</b>	<b>3. Branch</b>
<b>Saddle Ridge</b>	Date From: 10/15/19      Date To: 10/16/19 Time From: 0700              Time To: 0700	<b>Staging</b>

**STAGING**

Page 1 of 1

<b>4. Operations Personnel:</b>	
Operations Section Chief: <b>Oscar Vargas, Guy Tomlinson, Mike Inman</b>	Night Ops: <b>Tom Stukey</b>
Branch Director:	Branch Safety:
Division/Group Supervisor: <b>Sara Rathbun (STAM)</b>	Air Attack:

<b>5. Resources Assigned:</b>		<b>** Resources Below in Bold are 12 Hour **</b>					
Resource Identifier	ALS	LWD	Leader	Personnel	Request #	Hours	Reporting Location
<b>STC LPF 1653C</b>			<b>Ryan Webster</b>	<b>26</b>	<b>E-2</b>	<b>0700-1900</b>	<b>ICP</b>
<b>STC BDF 6606C</b>			<b>Jim Snow</b>	<b>27</b>	<b>E-9</b>	<b>0700-1900</b>	<b>ICP</b>
<b>CRW ROSEBUD 2</b>			<b>Kyle Golus</b>	<b>20</b>	<b>C-10</b>	<b>0700-1900</b>	<b>ICP</b>
<b>CRW INYO IHC</b>			<b>Joel Schilling</b>	<b>20</b>	<b>C-3</b>	<b>0700-1900</b>	<b>ICP</b>
<b>CRW GOLDEN EMPIRE</b>			<b>Paddrick Young</b>	<b>21</b>	<b>C-18</b>	<b>0700-1900</b>	<b>ICP</b>
<b>CRW EL CARISO CREW 2</b>			<b>Charles Kott</b>	<b>19</b>	<b>C-3</b>	<b>0700-1900</b>	<b>ICP</b>
<b>STG LAC 1178G</b>			<b>David Hernandez</b>	<b>25</b>	<b>C-15</b>	<b>0700-1900</b>	<b>Holton Camp</b>
<b>STG LAC 1179G</b>			<b>Dan Garcia</b>	<b>25</b>	<b>C-48</b>	<b>0700-1900</b>	<b>Holton Camp</b>

**6. Work Assignments:**  
Resources to stage at ICP.  
Maintain 3 minute response time.

**7. Special Instructions:**

**8. Communications**

Name	Ch	Function	Rx Freq	Rx Tone	Tx Freq	Tx Tone	Notes
LAC V-3	1	COMMAND	152.5400	(T14) 151.4	157.8000	(T14) 151.4	

**9. Prepared by: Name:** Kristen Allison, Lauren Dale, Kenneth Cook (t), Rob Scott (t), RESL

Signature: \_\_\_\_\_

**ICS 204** Date/Time: 10/14/2019 2200      Personnel Count: 183

# ASSIGNMENT LIST (ICS 204 WF)

CONTROLLED UNCLASSIFIED  
INFORMATION//BASIC

<b>1. Incident Name:</b> <div style="text-align: center; font-weight: bold;">Saddle Ridge</div>	<b>2. Operational Period:</b> Date From: 10/15/19    Date To: 10/16/19 Time From: 0700    Time To: 0700	<b>3. Branch</b> <b>Division</b> <div style="text-align: center; font-weight: bold;">Suppression Repair</div>
<b>4. Operations Personnel:</b>		Page 1 of 1

Operations Section Chief: <b>Oscar Vargas, Guy Tomlinson, Mike Inman</b>	Night Ops: <b>Tom Stukey</b>
Branch Director:	Branch Safety:
Division/Group Supervisor: <b>Renee Henault, John Owings, Matt Lipson</b>	Air Attack:

<b>5. Resources Assigned:</b>		** Resources Below in Bold are 12 Hour **					
Resource Identifier	ALS	LWD	Leader	Personnel	Request #	Hours	Reporting Location
THSP ALONZO			<b>Denise Alonzo</b>	<b>1</b>	<b>O-335</b>	<b>0700-1900</b>	<b>ICP</b>
REAF STEINWACHS			<b>Lindsey Steinwachs</b>	<b>1</b>	<b>O-336</b>	<b>0700-1900</b>	<b>ICP</b>
REAF(t) HODGES			<b>Daryl Hodges</b>	<b>1</b>	<b>O-337</b>	<b>0700-1900</b>	<b>ICP</b>
READ RIMBENIEKS			<b>Evalds Rimbenieks</b>	<b>1</b>	<b>O-194</b>	<b>0700-1900</b>	<b>ICP</b>
READ(t) SOWINSKA			<b>Monika Sowinska</b>	<b>1</b>	<b>O-195</b>	<b>0700-1900</b>	<b>ICP</b>
READ ALEGRIA			<b>Nick Alegria</b>	<b>1</b>	<b>O-369</b>	<b>0700-1900</b>	<b>ICP</b>
READ MOORE			<b>Trevor Moore</b>	<b>1</b>	<b>O-370</b>	<b>0700-1900</b>	<b>ICP</b>
ARCH CARVER			<b>Carver, Larrynn</b>	<b>1</b>	<b>O-248</b>	<b>0700-1900</b>	<b>ICP</b>
ARCH HUCKABEE			<b>Johanna Huckabee</b>	<b>1</b>	<b>O-367</b>	<b>0700-1900</b>	<b>ICP</b>
ARCH RYDER			<b>Thalia Ryder</b>	<b>1</b>	<b>O-368</b>	<b>0700-1900</b>	<b>ICP</b>
GISS CONKLIN			<b>Evan Conklin</b>	<b>1</b>	<b>O-112</b>	<b>0700-1900</b>	<b>ICP</b>
CRW SALMON RIVER IHC			<b>Bill Robinson</b>	<b>19</b>	<b>C-12</b>	<b>0700-1900</b>	<b>ICP</b>
CRW VENTANA CREW			<b>Harold Cook</b>	<b>20</b>	<b>C-6</b>	<b>0700-1900</b>	<b>ICP</b>
CRW HEART LAKE CREW 4			<b>Corey Buckley</b>	<b>18</b>	<b>C-9</b>	<b>0700-1900</b>	<b>ICP</b>
STL TUU 9417L			<b>Angelo Prampini</b>	<b>7</b>	<b>E-235</b>	<b>0700-1900</b>	<b>ICP</b>
STL TCU 9448L			<b>William Schall</b>		<b>E-83</b>	<b>0700-1900</b>	<b>ICP</b>
DOZ BDF DOZER 3			<b>Daren Howard</b>	<b>3</b>	<b>E-19</b>	<b>0700-1900</b>	<b>ICP</b>

**6. Work Assignments:**  
Continue with suppression repair throughout fire area.  
Coordinate with Branch I and Divisions to utilize tactical resources to assist with repair needs following suppression repair guidelines.

**7. Special Instructions:**

**8. Communications**

Name	Ch	Function	Rx Freq	Rx Tone	Tx Freq	Tx Tone	Notes
LAC V-3	1	COMMAND	152.5400 N	(T14) 151.4	157.8000 N	(T14) 151.4	
FCA V-1D	7	TACTICAL	155.3250 N	(T6) 156.7	155.3250 N	(T6) 156.7	
CALCORD	13	MEDICAL TAC	156.0750 N	(T6) 156.7	156.0750 N	(T6) 156.7	
A/G CMD	14	AIR TO GROUND	167.8125 N	NONE	167.8125 N	NONE	BRANCH, OPS, DIVS
A/G TAC	15	AIR TO GROUND	168.3375 N	NONE	168.3375 N	NONE	ALL DIVISIONS
AIR GUARD	16	EMERGENCY	168.6250 N	NONE	168.6250 N	(T1) 110.9	

Signature: \_\_\_\_\_

ICS 204

Date/Time: 10/14/2019 2200

Personnel Count: 78



Saddle Ridge Incident  
Night Operations 204's  
10/15/2019  
1800-0700

# ASSIGNMENT LIST (ICS 204 WF)

CONTROLLED UNCLASSIFIED  
INFORMATION//BASIC

<b>1. Incident Name:</b> <p style="text-align: center;"><b>Saddle Ridge</b></p>	<b>2. Operational Period:</b> Date From: 10/15/19      Date To: 10/16/19 Time From: 0700              Time To: 0700	<b>3. Branch</b> <b>Division</b>  <p style="text-align: center;"><b>A/Z NIGHT</b></p>
--	---	---

Page 1 of 1

<b>4. Operations Personnel:</b>	
Operations Section Chief: <b>Oscar Vargas, Guy Tomlinson, Mike Inman</b>	Night Ops: <b>Tom Stukey</b>
Branch Director:	Branch Safety:
Division/Group Supervisor: <b>Dave Edwards</b>	Air Attack:

<b>5. Resources Assigned:</b>		** Resources Below in Bold are 12 Hour **					
Resource Identifier	ALS	LWD	Leader	Personnel	Request #	Hours	Reporting Location
<b>STC KNF 3600C</b>			<b>Matt Prentiss</b>	<b>27</b>	<b>E-144</b>	<b>1800-0700</b>	<b>ICP</b>
<b>ENG3 ANF 32</b>			<b>Eduardo Chacon</b>	<b>5</b>	<b>E-203</b>	<b>1800-0700</b>	<b>ICP</b>
<b>ENG3 ANF 20</b>			<b>Jorrod Breneman</b>	<b>5</b>	<b>E-207</b>	<b>1800-0700</b>	<b>ICP</b>
<b>ENG3 ANF 327</b>			<b>Eric Thomas</b>	<b>5</b>	<b>E-209</b>	<b>1800-0700</b>	<b>ICP</b>
ENG LFD BP8			Craig Poulson	2	E-106	0700-0700	ICP
ENG LFD BP23			Kurt Vosberg	2	E-100	0700-0700	ICP
ENG LFD BP84			Dan Zabala	2	E-97	0700-0700	ICP
SOFR AVERY			Gregg Avery	1	O-379	0700-0700	ICP
SOFR GOUDCHAUX (t)			Mike Goudchaux	1	O-306	0700-0700	ICP

**6. Work Assignments:**  
Patrol, monitor fire status.

**7. Special Instructions:**  
All night DIVS make radio contact with all 24 hour resources assigned and confirm with communications when complete.  
Refill Forest Service pre-attack tanks.  
Safety Officers Avery and Goudchaux(t) are shared with Division X/V during night operations.

<b>8. Communications</b>							
Name	Ch	Function	Rx Freq	Rx Tone	Tx Freq	Tx Tone	Notes
LAC V-3	1	COMMAND	152.5400 N	(T14) 151.4	157.8000 N	(T14) 151.4	
FCA V-3D	9	TACTICAL	150.7750 N	(T6) 156.7	150.7750 N	(T6) 156.7	
CALCORD	13	MEDICAL TAC	156.0750 N	(T6) 156.7	156.0750 N	(T6) 156.7	
A/G CMD	14	AIR TO GROUND	167.8125 N	NONE	167.8125 N	NONE	BRANCH, OPS, DIVS
A/G TAC	15	AIR TO GROUND	168.3375 N	NONE	168.3375 N	NONE	ALL DIVISIONS
AIR GUARD	16	EMERGENCY	168.6250 N	NONE	168.6250 N	(T1) 110.9	

**9. Prepared by: Name:** Kristen Allison, Lauren Dale, Kenneth Cook (t), Rob Scott (t),                      RESL                      Signature: \_\_\_\_\_

**ICS 204**    Date/Time: 10/14/2019 2200    Personnel Count: 50

# ASSIGNMENT LIST (ICS 204 WF)

CONTROLLED UNCLASSIFIED  
INFORMATION//BASIC

<b>1. Incident Name:</b> <b>Saddle Ridge</b>	<b>2. Operational Period:</b> Date From: 10/15/19     Date To: 10/16/19 Time From: 0700             Time To: 0700	<b>3. Branch</b> <b>Division</b>  <b>XIV NIGHT</b>
---	---	--

**4. Operations Personnel:** Page 1 of 1

Operations Section Chief: <b>Oscar Vargas, Guy Tomlinson, Mike Inman</b>	Night Ops: <b>Tom Stukey</b>
Branch Director:	Branch Safety:
Division/Group Supervisor: <b>Jim Underwood</b>	Air Attack:

**5. Resources Assigned:**                      **\*\* Resources Below in Bold are 12 Hour \*\***

Resource Identifier	ALS	LWD	Leader	Personnel	Request #	Hours	Reporting Location
<b>ENG3 HBR 33</b>				<b>3</b>	<b>E-198</b>	<b>1800-0700</b>	<b>ICP</b>
<b>ENG3 ANF 311</b>			<b>Victor Almahza</b>	<b>5</b>	<b>E-200</b>	<b>1800-0700</b>	<b>ICP</b>
<b>ENG3 ANF 324</b>			<b>Todd Heon</b>	<b>5</b>	<b>E-277</b>	<b>1800-0700</b>	<b>ICP</b>
<b>SOFR AVERY</b>			<b>Gregg Avery</b>	<b>1</b>	<b>O-379</b>	<b>1800-0700</b>	<b>ICP</b>
<b>SOFR GOUDCHAUX (t)</b>			<b>Mike Goudchaux</b>	<b>1</b>	<b>O-306</b>	<b>1800-0700</b>	<b>ICP</b>

**6. Work Assignments:**  
Patrol, monitor fire status.

**7. Special Instructions:**  
All night DIVS make radio contact with all 24 hour resources assigned and confirm with communications when complete.  
Refill Forest Service pre-attack tanks.  
Safety Officers Avery and Goudchaux(t) are shared with Division A/Z during night operations.

**8. Communications**

Name	Ch	Function	Rx Freq	Rx Tone	Tx Freq	Tx Tone	Notes
LAC V-3	1	COMMAND	152.5400 N	(T14) 151.4	157.8000 N	(T14) 151.4	
NIFC T-1	11	TACTICAL	168.0500 N	NONE	168.0500 N	NONE	
CALCORD	13	MEDICAL TAC	156.0750 N	(T6) 156.7	156.0750 N	(T6) 156.7	
A/G CMD	14	AIR TO GROUND	167.8125 N	NONE	167.8125 N	NONE	BRANCH, OPS, DIVS
A/G TAC	15	AIR TO GROUND	168.3375 N	NONE	168.3375 N	NONE	ALL DIVISIONS
AIR GUARD	16	EMERGENCY	168.6250 N	NONE	168.6250 N	(T1) 110.9	

Signature: \_\_\_\_\_

**ICS 204**                                      Date/Time: 10/14/2019 2200                                      Personnel Count: 15



# ASSIGNMENT LIST (ICS 204 WF)

CONTROLLED UNCLASSIFIED  
INFORMATION//BASIC

<b>1. Incident Name:</b> <b>Saddle Ridge</b>	<b>2. Operational Period:</b> Date From: 10/15/19 Date To: 10/16/19 Time From: 0700 Time To: 0700	<b>3. Branch</b> <b>B/C/D/F NIGHT</b>	<b>Division</b>
---	---	--	-----------------

**4. Operations Personnel:** Page 1 of 1

Operations Section Chief: <b>Oscar Vargas, Guy Tomlinson, Mike Inman</b>	Night Ops: <b>Tom Stukey</b>
Branch Director:	Branch Safety:
Division/Group Supervisor: <b>Dan McNamara</b>	Air Attack:

**5. Resources Assigned:**      **\*\* Resources Below in Bold are 12 Hour \*\***

Resource Identifier	ALS	LWD	Leader	Personnel	Request #	Hours	Reporting Location
STF LFD 1011F			Rich Diede	13		0700-0700	
SOFR ALEXIOU			John Alexiou	1		0700-0700	
SOFR HARMS (t)			Jeff Harms	1	O-346	0700-0700	

**6. Work Assignments:**  
Patrol assigned divisions. Mop up areas of concern as appropriate and can be safely worked.

**7. Special Instructions:**  
All night DIVS make radio contact with all 24 hour resources assigned and confirm with communications when complete.  
Safety Officers Alexiou and Harms are shared with Division S/T

**8. Communications**

Name	Ch	Function	Rx Freq	Rx Tone	Tx Freq	Tx Tone	Notes
LAC V-3	1	COMMAND	152.5400 N	(T14) 151.4	157.8000 N	(T14) 151.4	
VFIRE22	2	TACTICAL	154.2650 N	(T6) 156.7	154.2650 N	(T6) 156.7	
CALCORD	13	MEDICAL TAC	156.0750 N	(T6) 156.7	156.0750 N	(T6) 156.7	
A/G CMD	14	AIR TO GROUND	167.8125 N	NONE	167.8125 N	NONE	BRANCH, OPS, DIVS
A/G TAC	15	AIR TO GROUND	168.3375 N	NONE	168.3375 N	NONE	ALL DIVISIONS
AIR GUARD	16	EMERGENCY	168.6250 N	NONE	168.6250 N	(T1) 110.9	

ICS 204      Date/Time: 10/14/2019 2200      Signature: \_\_\_\_\_      Personnel Count: 15

# ASSIGNMENT LIST (ICS 204 WF)

CONTROLLED UNCLASSIFIED  
INFORMATION//BASIC

<b>1. Incident Name:</b>		<b>2. Operational Period:</b>		<b>3. Branch</b>		<b>Division</b>	
<b>Saddle Ridge</b>		Date From: 10/15/19	Date To: 10/16/19	S/T NIGHT			
		Time From: 0700	Time To: 0700				
<b>4. Operations Personnel:</b>						Page 1 of 1	

Operations Section Chief: <b>Oscar Vargas, Guy Tomlinson, Mike Inman</b>	Night Ops: <b>Tom Stukey</b>
Branch Director:	Branch Safety:
Division/Group Supervisor: <b>Darus Ane</b>	Air Attack:

<b>5. Resources Assigned:</b>		** Resources Below in Bold are 12 Hour **					
Resource Identifier	ALS	LWD	Leader	Personnel	Request #	Hours	Reporting Location
STC MVU 9331C				18	E-60	0700-0700	
STC RRU 9310C				18	E-61	0700-0700	
STC TUU 9411C				18	E-172	0700-0700	
STG RRU 9315G				33	C-17	0700-0700	
STG RRU 9318G				33	C-24	0700-0700	
WT FHL 8842				2	E-15	0700-0700	
SOFR ALEXIOU			John Alexiou	1		0700-0700	
SOFR HARMS			Jeff Harms	1	O-346	0700-0700	

**6. Work Assignments:**  
Tactical Patrol.  
Identify and extinguish hot spots.

**7. Special Instructions:**  
All night DIVS make radio contact with all 24 hour resources assigned and confirm with communications when complete.  
Safety Officers Alexiou and Harms are shared with Division B/C/D/F.

<b>8. Communications</b>							
Name	Ch	Function	Rx Freq	Rx Tone	Tx Freq	Tx Tone	Notes
LAC V-3	1	COMMAND	152.5400 N	(T14) 151.4	157.8000 N	(T14) 151.4	
VFIRE26	6	TACTICAL	154.3025 N	(T6) 156.7	154.3025 N	(T6) 156.7	
CALCORD	13	MEDICAL TAC	156.0750 N	(T6) 156.7	156.0750 N	(T6) 156.7	
A/G CMD	14	AIR TO GROUND	167.8125 N	NONE	167.8125 N	NONE	BRANCH, OPS, DIVS
A/G TAC	15	AIR TO GROUND	168.3375 N	NONE	168.3375 N	NONE	ALL DIVISIONS
AIR GUARD	16	EMERGENCY	168.6250 N	NONE	168.6250 N	(T1) 110.9	

Signature: \_\_\_\_\_

**ICS 204**

Date/Time: 10/14/2019 2200

Personnel Count: 124



# HEALTH AND SAFETY MESSAGE

**SLOW DOWN !!!**

INCIDENT: Saddle Ridge Fire

DATE: 10/15-16/2019

TIME: 0700-0700

**Major Hazards and Risks: Long Hours Mopping Up on Steep Terrain with High Heat, Hazard Trees, HAZ-MAT, Respiratory protection, High Winds.**

Fire Order of the Day– *Keep informed on fire weather conditions and forecasts.*

## **Watch Out Situation**

WIND INCREASING AND/ OR CHANGES IN DIRECTION



**BE AWARE !!!**

**LOTS OF LOOKEY LOU'S & HIKERS  
WITHIN THE FIRE BOUNDARIES**



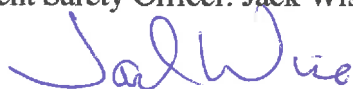
## **PLANNING FOR MEDICAL EMERGENCIES**

Develop your Extraction Plan

- WHAT DO YOU DO IF SOMEONE GETS HURT?
  - HOW WILL YOU GET THEM OUT?
- HOW LONG WILL IT GET THEM TO THE HOSPITAL?

Refer to IAP 206 Medical Plan and Medical Incident Report (IRPG Page 118-119)

Incident Safety Officer: Jack Wise SOF 1, Mitch Brookhyser SOF 2 (t)



**INCIDENT SAFETY ANALYSIS 215a**

**SADDLE RIDGE - Tuesday, October 15, 2019**

8. Location	9. Hazard	6. Control or Abatement Action (Engineering, Administrative, PPE, Avoidance, Education, etc)
DIV A&T	Compost Pile / OverHaul Operations	~ Monitor Air for CO and other potential Hazards. ~ Wear dust respirators or SCBA during operations. ~ Wear PPE for identified and potential hazards. ~ Refer to IRPG page 86 when working with heavy equipment. ~ Watch for potential flareups or collapse. "
ALL	Roadside Response Safety	~ Keep all hose, fire tools, equipment out of traffic lanes. Refer to IRPG Page 26
All	Fireline Hazards	~ Watch for falling and rolling debris on steep slopes. ~ Avoid radiant heat by wearing appropriate PPE correctly. ~ Follow power line safety protocol as outlined on page 24 in IRPG. ~ Flag and isolate all HAZMAT and alert all personnel working in Division. ~ Follow WUI recommendations on pages 12-13 in IRPG.
ALL	ASH POTS	~ Beware of burnt-out areas around trees and stumps
ALL	Driving & Traffic	~ Practice "Defensive Driving" techniques traveling on all roads and city streets. ~ Use spotters when backing. ~ Honk horn to alert personnel when backing. ~ Follow Driving LCES (Lights, Chock blocks, Emergency brake, Seat belts. ~ Always use headlights. ~ Yield to pedestrians and bicycles. ~ Observe posted speed limits. ~ Use chock blocks, turn wheels into hill. ~ Avoid distractions (eating, cell phones, radio).
DIVS S,/T, V, X	Steep Terrain & Rolling Debris	~ Maintain 8'-10' spacing when working & walking. ~ Don't work above any personnel. ~ Be on the lookout for rolling rocks, debris, or burning material. ~ Evaluate necessity to send personnel in areas with limited access. ~ Post lookouts (IRPG pg 6).
ALL	Mop-up & Rehab	~ Do not work above or below personnel during rehab/mop-up operations. ~ Alert crew personnel of rolling debris by yelling to affected individuals. ~ Position debris that could roll vertically on slope. ~ Wear eye protection.
ALL	Personal Hygiene	~ Don't share personal items such as water bottles communication devices and utensils. ~ Wash hands before meals, and after use of rest room facilities.
ALL	Structure Protection & HAZMAT	~ Isolate and deny entry, stay uphill, upwind of any suspected Haz mat ~ Follow "HAZMAT Incident Operations" on pages 34-36 in IRPG.
DIVS S/T, V, X	Hazard Trees	~ Follow "Hazard Tree Safety" guidelines, IRPG page 22. ~ Post lookouts, or use a spotter in mop-up areas with personnel. ~ Don't park vehicles or take breaks in high concentrations of hazard trees. ~ Establish trigger points for disengagement during high wind events. ~ Remember that the hazard zone extends a minimum of 2 1/2 tree heights.
ALL	Fireline Hazards	~ Do not work directly above or below personnel during mop-up operations. ~ Watch for falling and rolling debris on steep slopes. ~ Alert crew personnel of rolling debris by yelling to affected individuals. ~ Avoid radiant heat by wearing appropriate PPE correctly. ~ Use correct tool for task assigned. ~ Follow power line safety protocol as outlined on page 22 in IRPG. ~ Flag and isolate all HAZMAT and alert all personnel working in Division.
DIVS A/Z, S/T, X	Heavy Equipment Operations	~ Ensure communications are established with operators. ~ Use hand signals if other communications are unavailable. ~ Maintain a 50'-100' exclusion area around equipment and increase it to 1 1/2 times tree height when in timber. ~ Use a spotter when backing. ~ Avoid working below heavy equipment.
DIVS A/Z, S/T, X	Chain Saw Operations	~ Follow "Hazard Tree Safety" guidelines, IRPG page 22 ~ Look up, Look down, Look around for hazard tree indicators. ~ Only fell and buck trees within your expertise, and training. ~ Follow "Procedural Felling Operations" on page 85 in IRPG. ~ Do not fall trees during high wind events. ~ Ensure proper use of all required PPE.
ALL	Fatigue & Over Exertion	~ Drink 1 quart of water each hour during and after work. ~ Rotate crews out of smoky areas. ~ Set a reasonable work pace and allow adequate rest breaks while on the project. ~ Stagger work crews start time to limit fatigue. ~ Use buddy system to monitor personnel of heat related and fatigue issues. ~ Follow work / rest guidelines.

*Joel Wie SOFI*

# MEDICAL PLAN (ICS 206)

<b>1. Incident Name: Saddle Ridge</b>	<b>2. Operational Period: Date From: 10/15/19</b> Time From: 0700	<b>Date To: 10/16/19</b> Time To: 0700
---------------------------------------	--	---

<b>3. Medical Aid Stations:</b>			
Name	Location	Contact Number(s)/Frequency	Paramedics on Site?
LFD RA266 Day / LFD RA7 Night	ICP – Hansen Dam	Command	<input checked="" type="checkbox"/> Yes <input type="checkbox"/> No

<b>4. Transportation (indicate air or ground):</b>			
	Location	Contact Number(s)/Frequency	Level of Service
LAC Helicopter (Hoist)	Barton Heliport – 12605 Osborne St.	Command	<input checked="" type="checkbox"/> ALS <input type="checkbox"/> BLS
LFD / LAC	*** JURISDICTIONAL AGENCY***	Command	<input checked="" type="checkbox"/> ALS <input type="checkbox"/> BLS

<b>5. Hospitals:</b>							
Hospital Name	Address, Latitude & Longitude if Helipad	Contact Number(s)/ Frequency	Travel Time		Trauma Center	Burn Center	Helipad
			Air	Ground			
Henry Mayo Newhall Hospital	23845 West McBean Parkway Valencia, 91355 N34 23.94 / W118 33.11	(661) 200-1601	10	20	<input checked="" type="checkbox"/> Yes Level: <u>2</u>	<input type="checkbox"/> Yes <input checked="" type="checkbox"/> No	<input checked="" type="checkbox"/> Yes <input type="checkbox"/> No
LAC Olive View Medical Center	14445 Olive View Drive Sylmar, 91342 N34 19.61 / W118 26.70	(747) 210-4324	5	10	<input type="checkbox"/> Yes Level: _____	<input type="checkbox"/> Yes <input checked="" type="checkbox"/> No	<input checked="" type="checkbox"/> Yes <input type="checkbox"/> No
West Hills Hospital	7300 Medical Center Dr. West Hills, 91307 N34 12.18 / W118 37.75	(818) 676-4598	10	30	<input type="checkbox"/> Yes Level: _____	<input checked="" type="checkbox"/> Yes <input type="checkbox"/> No	<input checked="" type="checkbox"/> Yes <input type="checkbox"/> No
Dignity Health Northridge Hospital	18300 Roscoe Blvd Northridge, 91328 N34 13.21 / W118 31.95	(818) 885-5396	5	20	<input checked="" type="checkbox"/> Yes Level: <u>2</u>	<input type="checkbox"/> Yes <input checked="" type="checkbox"/> No	<input checked="" type="checkbox"/> Yes <input type="checkbox"/> No
Providence Holy Cross Medical Center	15031 Rinaldi St. Mission Hills, 91345 N 34 16.81 / W 118 27.67	(909) 623-8715	5	15	<input checked="" type="checkbox"/> Yes Level: <u>2</u>	<input type="checkbox"/> Yes <input checked="" type="checkbox"/> No	<input checked="" type="checkbox"/> Yes <input type="checkbox"/> No
LAC + USC Medical Center	1200 North State Street Los Angeles, 90033 N 34 03.345 / W 118 12.48	(323) 226-2622	15	40	<input checked="" type="checkbox"/> Yes Level: <u>1</u>	<input checked="" type="checkbox"/> Yes <input type="checkbox"/> No	<input checked="" type="checkbox"/> Yes <input type="checkbox"/> No

**6. Medical Emergency Procedures:**  
In the event of a medical emergency follow the 8-Step Medical Incident Report, pages 118-119 of the IRPG.

1. Contact Communications
  - a. "Stand-by for Emergency Traffic"
2. Incident Status:
  - a. Severity of Emergency (Red/Yellow /Green)
  - b. Nature of injury/illness/MOI
  - c. Transport request (Air, ground)
  - d. Patient Location (Lat/Long, WGS84)
  - e. Incident name (Geographic name + medical)
  - f. Incident Commander
  - g. Patient Care (provider name)
3. Initial patient assessment - Refer to **Page 106**
4. Develop transport plan
  - a. Air/Ground, Need for hoist, drop point, Helispot
5. Determine need for additional resources
6. Confirm Communications
  - a. A/G EMS Frequencies
7. Contingency Plan
8. Additional Information
  - a. Updates/changes, etc.

**In Camp Emergency:** Contact Medical Unit at ICP

<b>EMERGENCY REPORTING WORKSHEET</b>
SEVERITY RED (Immediate) YELLOW (Delayed) GREEN (Minor)
NATURE OF EMERGENCY _____
LOCATION OF PATIENT _____
TRANSPORTATION REQUESTED BY: AIR__ GROUND__
POINT OF PICKUP _____
WGS84 LAT _____ LONG _____
PATIENT UNIT ID _____
REMINDER: <b>DO NOT</b> GIVE PT NAME OVER RADIO
IS AN EMT WITH PATIENT: YES _____ NO _____
AGE _____ SEX: MALE _____ FEMALE _____
<b>ALL EMERGENCIES—Secure the area and identify witnesses for later investigation. Keep an accurate log of events.</b>
<b>NOTE: IWI NOTIFICATIONS</b>
1. Incident Commander
2. Operations
3. Safety Officer
4. Medical Unit Leader

<b>7. Prepared by (Medical Unit Leader):</b> Name: <u>K. Litz MEDL / A. Reyes MEDL(t) / R. Wicklas MEDL(t)</u> Signature:	
<b>8. Approved by (Safety Officer):</b> Name: <u>Kristian Litz for Safety</u> Signature:	
ICS 206	IAP Page _____ Date/Time: <u>10/14/19 / 1900hrs</u>

<b>INCIDENT RADIO COMMUNICATIONS PLAN</b>		Incident Name <b>SADDLE RIDGE</b>		Date/Time Prepared <b>10/14/19 2000</b>	Operational Period Date/Time <b>10/15/19 @ 0700 - 10/16/19 @ 0700</b>	
---	--	--------------------------------------	--	--	--	--

**CONTROLLED UNCLASSIFIED INFORMATION/BASIC**

CH	Function	Channel Name/Trunked Talkgroup	Assignment	BX Freq	RX Tone/NAC	IX Freq	Tx Tone/NAC	Dev	Pwr	Mode A, D, M	Remarks
<b>VHF</b>											
1	COMMAND	LAC V-3	ALL DIVISIONS	152.5400	Tone 14 151.4	157.8000	Tone 14 151.4	N	H	A	
2	TACTICAL	VFIRE22	DIVISION B/C/D/F	154.2650	Tone 6 156.7	154.2650	Tone 6 156.7	N	L	A	
3	TACTICAL	VFIRE23	UNASSIGNED	154.2950	Tone 6 156.7	154.2950	Tone 6 156.7	N	L	A	
4	TACTICAL	VFIRE24	UNASSIGNED	154.2725	Tone 6 156.7	154.2725	Tone 6 156.7	N	L	A	
5	TACTICAL	VFIRE25	UNASSIGNED	154.2875	Tone 6 156.7	154.2875	Tone 6 156.7	N	L	A	
6	TACTICAL	VFIRE26	DIVISION S/T	154.3025	Tone 6 156.7	154.3025	Tone 6 156.7	N	L	A	
7	TACTICAL	FCA V-1D	SUPPRESSION REPAIR	155.3250	Tone 6 156.7	155.3250	Tone 6 156.7	N	H	A	
8	TACTICAL	FCA V-2D	UNASSIGNED	155.4000	Tone 6 156.7	155.4000	Tone 6 156.7	N	H	A	
9	TACTICAL	FCA V-3D	DIVISION A/Z	150.7750	Tone 6 156.7	150.7750	Tone 6 156.7	N	H	A	
10	TACTICAL	FCA V-4D	UNASSIGNED	155.3550	Tone 6 156.7	155.3550	Tone 6 156.7	N	H	A	
11	TACTICAL	NIFC T-1	DIVISION V	168.0500	NONE	168.0500	NONE	N	L	A	NIGHT DIVISION XV
12	TACTICAL	R5 TAC 4	DIVISION X	166.5500	NONE	166.5500	NONE	N	L	A	
13	TACTICAL	CALCORD	MEDICAL TAC	156.0750	Tone 6 156.7	156.0750	Tone 6 156.7	N	H	A	
14	Air-to-Ground	A/G CMD	OPS, BRANCH, & DIVS	167.8125	NONE	167.8125	NONE	N	L	A	
15	Air-to-Ground	A/G TAC	ALL DIVISIONS	168.3375	NONE	168.3375	NONE	N	L	A	
16/20	EMERGENCY	AIR GUARD	EMERGENCY	168.6250	NONE	168.6250	Tone 1 110.9	N	L	A	

**LAFD 800 MHZ System**

800	DISPATCH	LFD T-8	LA CITY DISPATCH	858.4375	Tone 8 103.5	858.4375	Tone 9 103.5	W	H	A	
-----	----------	---------	------------------	----------	-----------------	----------	-----------------	---	---	---	--

Prepared By (Communications Unit Leader)  
**Mike Horst, COML (661) 645-4254 / Travis Wight, COML (562) 762-7304**

Incident Location: **Sylmar, CA**  
 Cnty: **Los Angeles**      Latitude      Longitude      W

**CONTROLLED UNCLASSIFIED INFORMATION/BASIC**

# ***TRAINING SPECIALIST MESSAGE***

**WEDNESDAY, OCTOBER 16<sup>th</sup> by 1600hrs. is the  
deadline to close the training package for the  
Saddle Ridge Incident.**

**Regardless of home agency, in order to ensure incident  
documentation of any training assignment – You must  
close your assignment with Training.**

**Bring a completed individual performance rating,**

**ICS 225/Taskbook/Qualifications card,**

**And Evaluator's Recommendation  
to the exit interview.**

**Remember: NO DOCUMENTATION - IT DIDN'T HAPPEN!**

**Thank you**

***Claudia Soiza - 949 632-7813***



**SADDLE RIDGE INCIDENT**

**DEMOB 10-15-19**

KIND #	RESOURCE ID
C 50	LAC ST 1173G
C 13	LAC ST 1176G
C 49	LAC ST 1177G
E 255	LAC HWT
E 84	LMU 9223L
E 69	SHU 9240C
E 67	LMU 9140C
E 6	LFD 1880C
E 82	LAC DT 3
E 80	LAC DT 7

## Saddle Ridge Fire Suppression Repair Guidelines

### **Objectives**

1. Minimize surface and gully erosion.
2. Minimize sediment delivery into stream channels.
3. Restore conditions to pre-fire drainage patterns.
4. Restore topsoil and soil cover, expediting revegetation.
5. Remove all suppression associated trash.

### **Special Provisions**

1. Motorized equipment will be thoroughly cleaned to prevent noxious weed spread before entering and after exiting the ANF.
2. Any reopened preexisting dozer lines or new handlines have been cleared for suppression repair work. New dozer lines, safety zones, helispots must be cleared by READs prior to suppression repair work.
3. Avoid all sensitive resources identified by orange and blue flagging.

### **ROADS**

1. Existing dirt surfaced roads used for access will be returned as close to pre-incident condition as possible.
2. Existing roads that are closed, but reopened for current incident use, will be returned as close to pre-incident condition as possible.
3. Remove woody debris, logs, rocks and other obstructions large enough to block water flow from drainage areas along roads and culverts.

### **DOZER LINES**

1. Dozer lines will be treated by pulling outside berms back into the control line, re-contouring or out-sloping the surface to allow water to quickly drain off of the dozer line.
2. Waterbars are to be built on slopes greater than 5% and the outlet should drain into the green whenever possible.
3. Waterbars will consist of a minimum of a six inch (6") cut into the firm bed of the control line and have a berm with a compacted height of no less than twelve inches (12") (see figure 1).
4. Waterbars will be constructed diagonally across should be skewed horizontally from the fall line of the slope (not the dozer line) approximately 30 degrees from horizontal and drained away from the fire burned area if possible.
5. Utilize natural rolls and dips whenever possible.
6. Scatter branches, wood, rock, brush or other material to naturalize the fire line and further minimize soil movement. Scattered material should be randomly placed along the dozer line.
7. When it will not compromise the effectiveness of containment lines, hand crews may be used to augment scattering of wood debris/slash to naturalize the dozer line and further retard soil erosion, striving to achieve a minimum of 65% surface cover.
8. Hand crews may be used to construct waterbars on slopes greater than 50% (with little to no rock) or in areas too hazardous for safe equipment operation, or in areas where dozer use may create additional surface disturbance.
9. When dozer lines follow a ridge where there is no vegetation on either side, or where there is unburned vegetation on both sides (indirect line), re-contouring and waterbars should be designed to divert water equally to both sides of the ridge.
10. Remove all trash and equipment associated with dozer equipment maintenance.
11. Vertical slashing, chunking or berming shall be used in combination with the above techniques to prevent access for unauthorized OHV use.
12. Entrances to dozer lines will be blocked from OHV travel by placement of berms (over 3 ft. high).

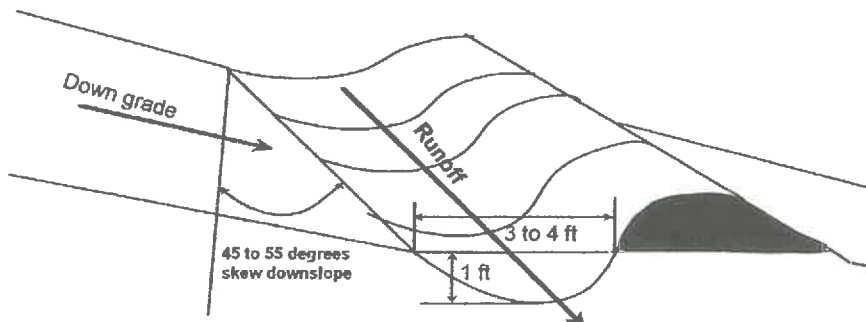
### **HAND LINES**

1. Use hand tools or chainsaws only on handlines, not dozers or excavators.
2. Trenching (if any) should be filled in and the hand line restored to blend with the undisturbed soil contours. Berms, topsoil, and organic matter should be pulled back onto the hand line. Green trees/branches, dead limbs and cut downed logs are to be re-scattered onto the hand line to obliterate evidence of the line as much as practical.
3. Waterbars for hand lines should be cut to a depth equal to the width of a standard fire shovel.
4. Waterbars should be skewed horizontally from the fall line of the slope (not the hand line) approximately 15 to 20 degrees from horizontal and drained away from the fire burned area if possible.
5. The outside end of the waterbar must be open and should discharge into an area where the ground surface is protected by vegetation that is unburned, if possible.
6. When hand lines follow a ridge where there is no vegetation either side, or where there is unburned vegetation on both sides (indirect line), re-contouring and waterbars should be designed to divert water equally to both sides of the ridge.
7. Utilize natural rolls and dips whenever possible.
8. Scatter branches, wood, rock, sod, pine, needles or other material to naturalize the fire line and further retard mineral soil movement. Scattered material should be randomly placed along the hand line. Strive for 65% to 85% ground cover on areas treated with scattered material to prevent mineral soil movement/channeling of the hand line. In grassy areas, replace soil and sod, waterbar as necessary and scatter rocks or limbs to naturalize the hand line location.
9. In some cases, chunking or berming may be used in combination with the above techniques to prevent access for unauthorized OHV use.
10. Remove all trash, equipment, and flagging.

**WATERBARS**

1. Water-bars should only be used on steep slopes and only when soil re-contouring (putting the soil disturbed by suppression activities back in place) alone is not sufficient to prevent erosion.
2. Water-bars for hand lines should be cut to a depth equal to the width of a standard fire shovel.
3. Water-bars for dozer lines should be no more than 1 foot deep and 2 feet wide.
4. Water-bars will be constructed diagonally across the control line at an angle of thirty-five to forty degrees. The outside end of the water-bar must be open and should discharge into an area where the ground surface is protected by vegetation that is unburned, if possible. Gravel or small cobble size rock armoring at the discharge end of the water-bar will also prevent erosion off the side of the water-bar.
5. Water-bars should be constructed at logical discharge points and guided by the spacing criteria as follows:

Fireline slope %	Maximum Distance Apart (feet)	<i>Recommended spacing for water-bars on firelines. Water-bars should be no further apart than this, but they may be closer. When in doubt, put in more.</i>
10-14	150	
15-20	90	
21-40	50	
41+	25	



designees.

ons as possible.  
 e surface drainage.  
 to prevent access for

, culverts, and paved roads

**NONMOTORIZED TRAILS**

1. Remove cut vegetation, rocks, trees from trails.
2. Reestablish and repair all drainage structures to pre-fire or functional condition.
3. Reestablish trail tread.
4. Stabilize and control erosion caused by suppression activity.

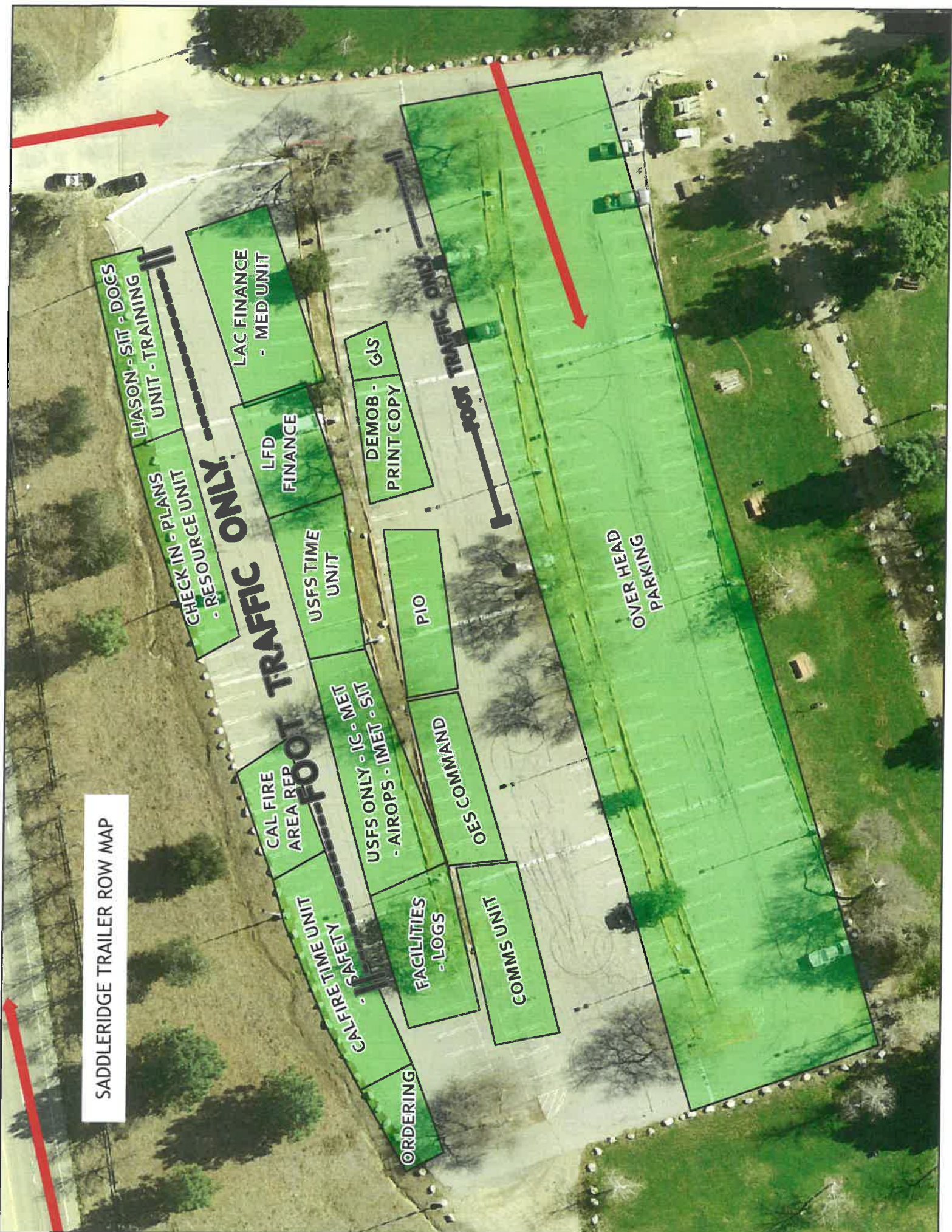
**RECREATION SITES**

1. Replace any barriers removed for access.

**VEHICLE BARRIERS** (Berms, gate, locking system etc)

1. Restore to pre-fire condition.

SADDLERIDGE TRAILER ROW MAP



LIASON - SIT - DOGS  
UNIT - TRAINING

CHECK IN - PLANS  
- RESOURCE UNIT

**FOOT TRAFFIC ONLY**

LAC FINANCE  
- MED UNIT

LFD  
FINANCE

USFS TIME  
UNIT

DEMOB -  
PRINT COPY GIS

PIO

OES COMMAND

CAL FIRE  
AREA REP

USFS ONLY - IC - SIT  
- AIROPS - IMET - SIT

FACILITIES  
- LOGS

COMM UNIT

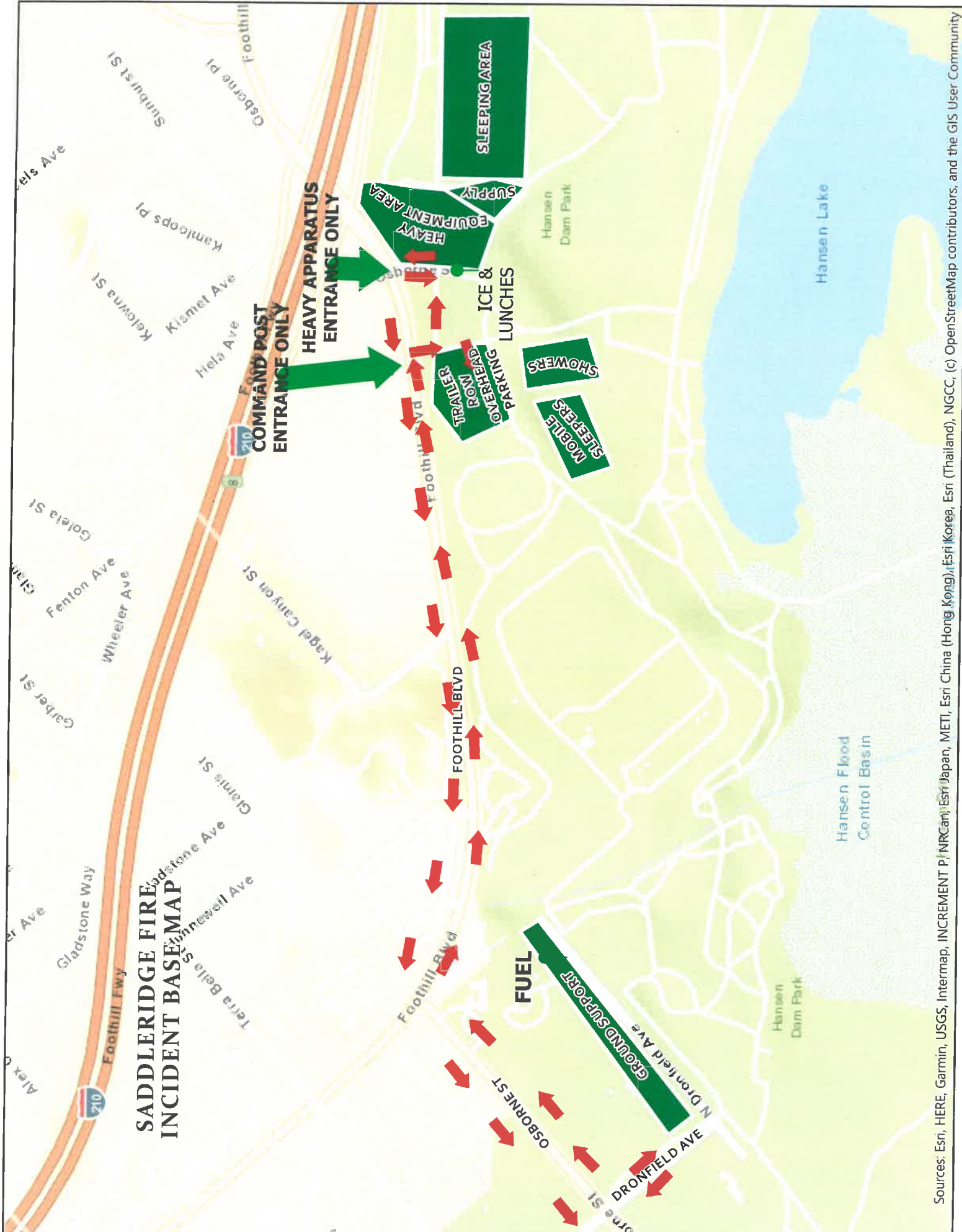
CAL FIRE TIME UNIT  
- SAFETY

ORDERING

**FOOT TRAFFIC ONLY**

OVERHEAD  
PARKING

# SADDLERIDGE FIRE INCIDENT BASE MAP





**UNIT LOG (ICS 214)**

**1. Incident Name:** Saddle Ridge  
**2. Operational Period:** Date From: 10/15/19 Date To: 10/16/19  
Time From: 0700 Time To: 0700

**3. Unit Name/Designators**  
**4. Unit Leader (Name and ICS Position)**

<b>5. Personnel Assigned/Designators</b>		
NAME	ICS POSITION	HOME BASE

<b>6. Activity Log (Continue on Reverse)</b>	
TIME	MAJOR EVENTS

**7. Prepared By:** \_\_\_\_\_ **Date/Time:** \_\_\_\_\_