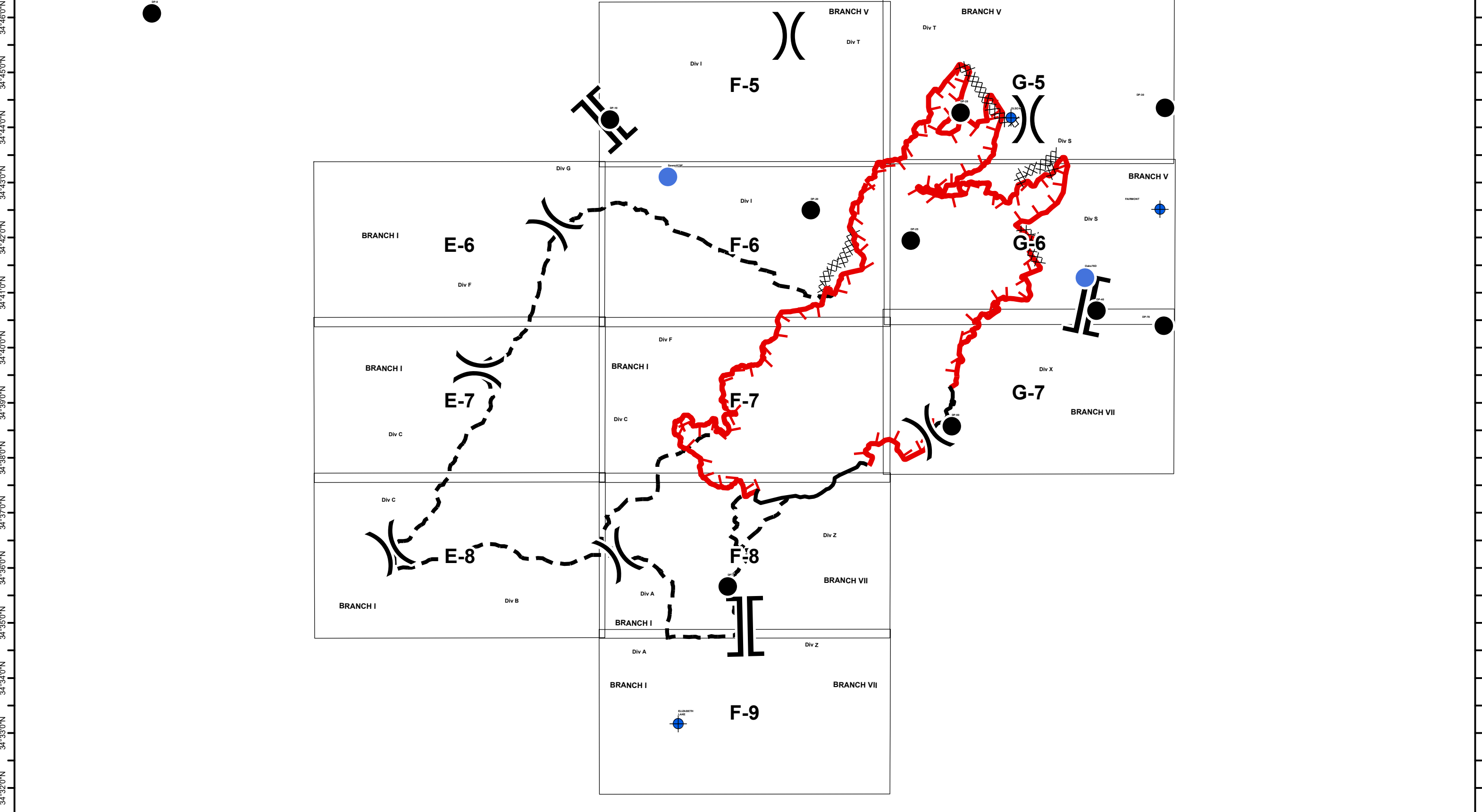


118°46'30"W 118°45'30"W 118°44'30"W 118°43'30"W 118°42'30"W 118°41'30"W 118°40'30"W 118°39'30"W 118°38'30"W 118°37'30"W 118°36'30"W 118°35'30"W 118°34'30"W 118°33'30"W 118°32'30"W 118°31'30"W 118°30'30"W 118°29'30"W 118°28'30"W 118°27'30"W 118°26'30"W 118°25'30"W 118°24'30"W 118°23'30"W 118°22'30"W 118°21'30"W 118°20'30"W



118°46'30"W 118°45'30"W 118°44'30"W 118°43'30"W 118°42'30"W 118°41'30"W 118°40'30"W 118°39'30"W 118°38'30"W 118°37'30"W 118°36'30"W 118°35'30"W 118°34'30"W 118°33'30"W 118°32'30"W 118°31'30"W 118°30'30"W 118°29'30"W 118°28'30"W 118°27'30"W 118°26'30"W 118°25'30"W 118°24'30"W 118°23'30"W 118°22'30"W 118°21'30"W 118°20'30"W



1:120,000  
1 inch = 1.89 miles



**Lake Fire**  
**CA-ANF-003273**  
**IAP**  
**August 15, 2020**

● Helispot ● Drop Point  
■ Incident Command Post ● Dip Site

Uncontrolled Fire Edge  
Contained Line  
Completed Dozer Line  
Planned Fire Line

**IAP Index**