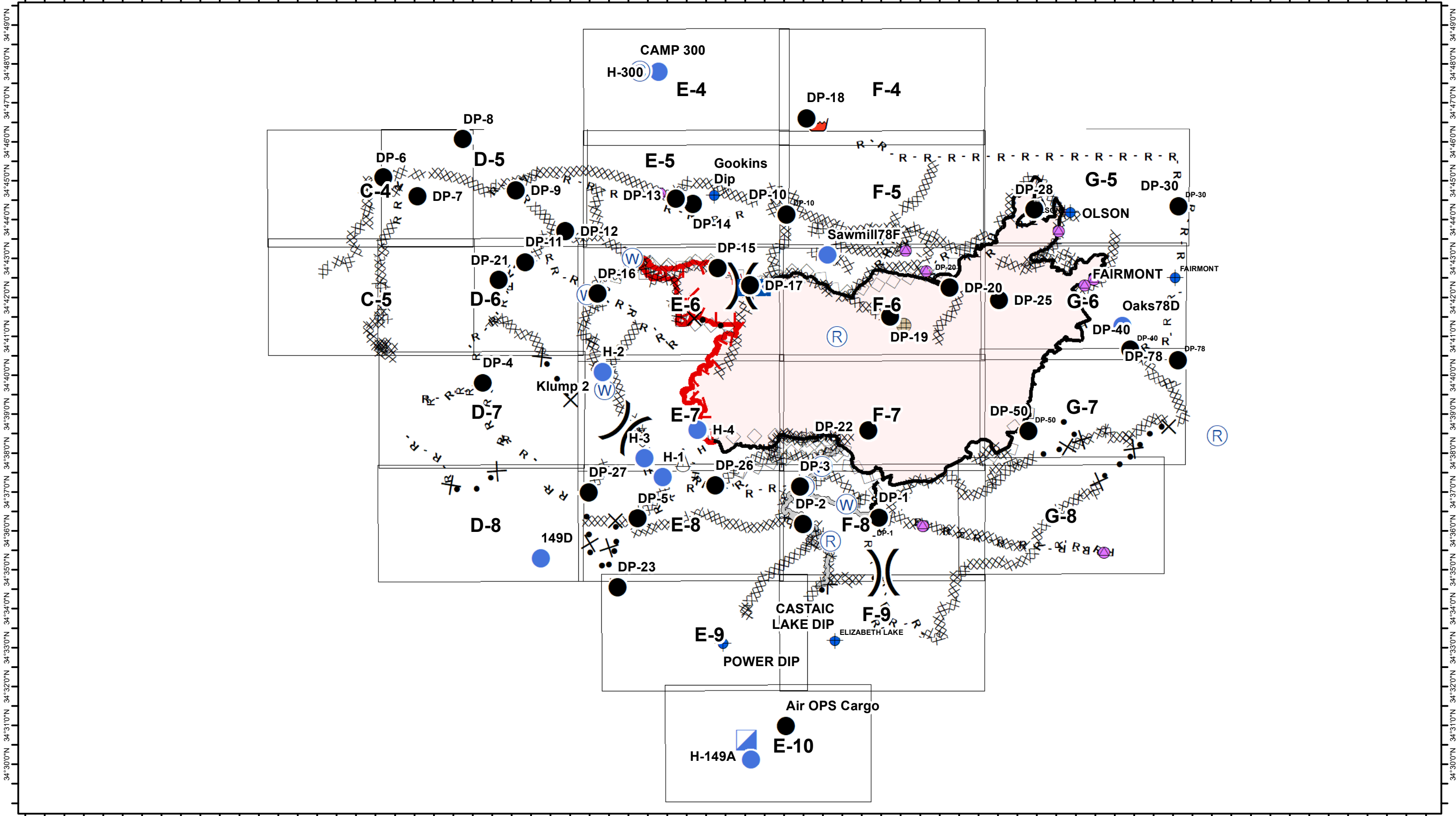


118°55'30"W 118°54'0"W 118°52'30"W 118°51'0"W 118°49'30"W 118°48'0"W 118°46'30"W 118°45'0"W 118°43'30"W 118°42'0"W 118°40'30"W 118°39'0"W 118°37'30"W 118°36'0"W 118°34'30"W 118°33'0"W 118°31'30"W 118°30'0"W 118°28'30"W 118°27'0"W 118°25'30"W 118°24'0"W 118°22'30"W 118°21'0"W 118°19'30"W

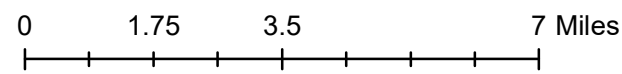


118°55'30"W 118°54'0"W 118°52'30"W 118°51'0"W 118°49'30"W 118°48'0"W 118°46'30"W 118°45'0"W 118°43'30"W 118°42'0"W 118°40'30"W 118°39'0"W 118°37'30"W 118°36'0"W 118°34'30"W 118°33'0"W 118°31'30"W 118°30'0"W 118°28'30"W 118°27'0"W 118°25'30"W 118°24'0"W 118°22'30"W 118°21'0"W 118°19'30"W



Lake Fire  
CA-ANF-003273  
IAP  
August 27, 2020 Day

- Drop Point
- Hellspot
- ◆ Dip Site
- 🔥 Retardant/Mud Pit
- Ⓜ Water Source
- ⌋ Division Break
- ⌋ Branch Break
- 👤 Incident Command Post
- Other
- 🔴 Uncontrolled Fire Edge
- ▬ Contained Line
- ⊗ Completed Dozer Line
- H - Completed Hand Line
- R - Road as Completed Line
- ▬ Planned Fire Line
- Planned Secondary Line
- ▬ Access or Improved Road
- Ⓡ Repeater



IAP Index