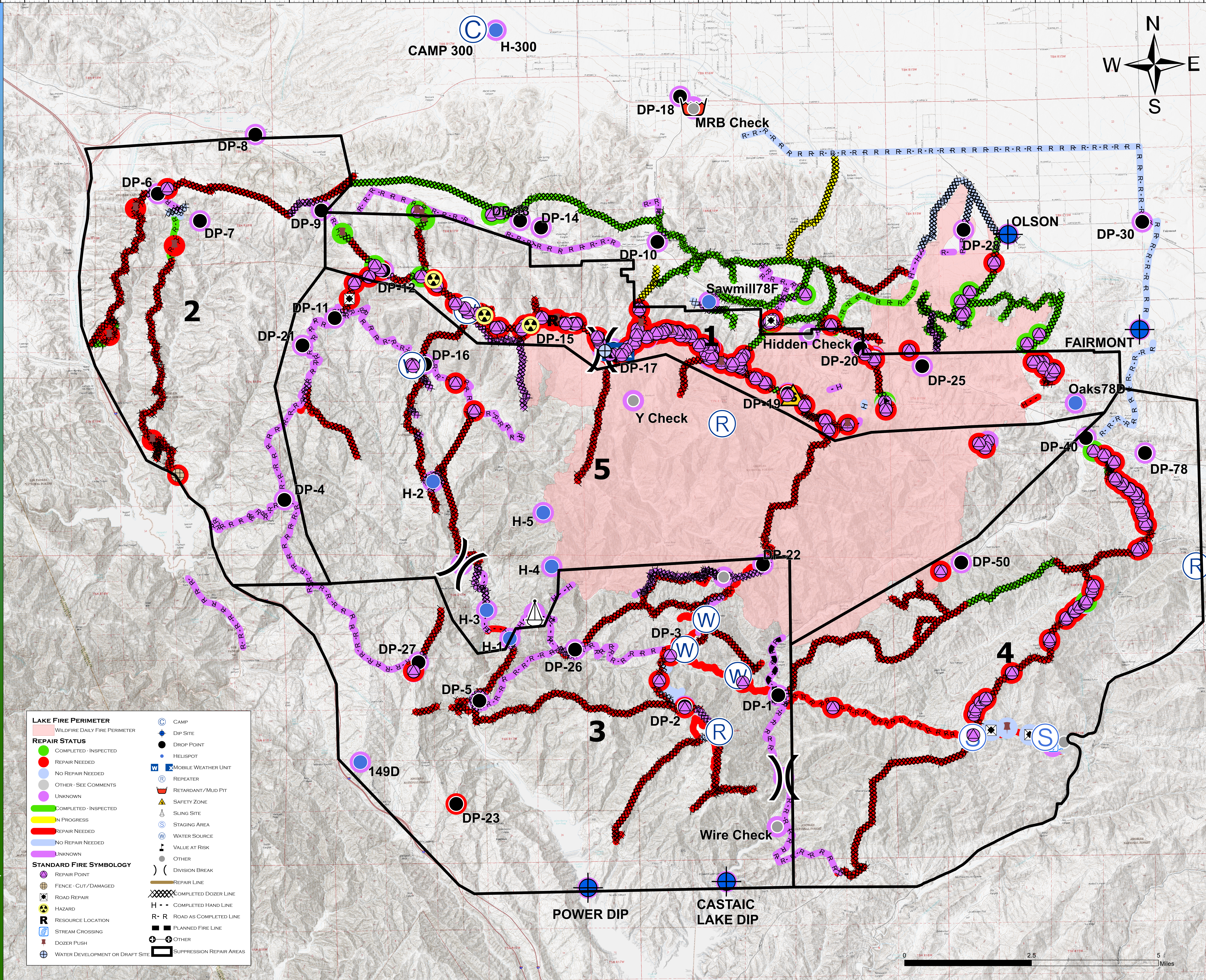


SUPPRESSION REPAIR MAP

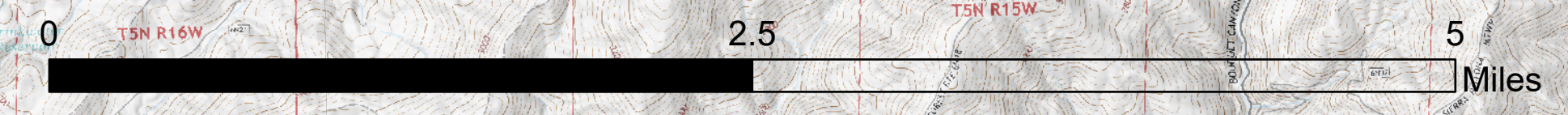
LAKE FIRE  
CA-ANF-003273



ANGEL'S FIRE GIS LAB  
9/14/2020 2:16  
NORTH AMERICAN 1983 DATUM, LAT/LONG GRID



| LAKE FIRE PERIMETER   |                                 |
|-----------------------|---------------------------------|
|                       | WILDFIRE DAILY FIRE PERIMETER   |
| REPAIR STATUS         |                                 |
|                       | COMPLETED - INSPECTED           |
|                       | REPAIR NEEDED                   |
|                       | NO REPAIR NEEDED                |
|                       | OTHER - SEE COMMENTS            |
|                       | UNKNOWN                         |
|                       | COMPLETED - INSPECTED           |
|                       | IN PROGRESS                     |
|                       | REPAIR NEEDED                   |
|                       | NO REPAIR NEEDED                |
|                       | UNKNOWN                         |
| STANDARD FIRE SYMBOLY |                                 |
|                       | REPAIR POINT                    |
|                       | FENCE - CUT/DAMAGED             |
|                       | ROAD REPAIR                     |
|                       | HAZARD                          |
|                       | RESOURCE LOCATION               |
|                       | STREAM CROSSING                 |
|                       | DOZER PUSH                      |
|                       | WATER DEVELOPMENT OR DRAFT SITE |
|                       | CAMP                            |
|                       | DIP SITE                        |
|                       | DROP POINT                      |
|                       | HELISPOT                        |
|                       | MOBILE WEATHER UNIT             |
|                       | REPEATER                        |
|                       | RETARDANT/MUD PIT               |
|                       | SAFETY ZONE                     |
|                       | SLING SITE                      |
|                       | STAGING AREA                    |
|                       | WATER SOURCE                    |
|                       | VALUE AT RISK                   |
|                       | OTHER                           |
|                       | DIVISION BREAK                  |
|                       | REPAIR LINE                     |
|                       | COMPLETED DOZER LINE            |
|                       | COMPLETED HAND LINE             |
|                       | ROAD AS COMPLETED LINE          |
|                       | PLANNED FIRE LINE               |
|                       | OTHER                           |
|                       | SUPPRESSION REPAIR AREAS        |



118°50.5'W 118°49.5'W 118°48.5'W 118°47.5'W 118°46.5'W 118°45.5'W 118°44.5'W 118°43.5'W 118°42.5'W 118°41.5'W 118°40.5'W 118°39.5'W 118°38.5'W 118°37.5'W 118°36.5'W 118°35.5'W 118°34.5'W 118°33.5'W 118°32.5'W 118°31.5'W 118°30.5'W 118°29.5'W 118°28.5'W 118°27.5'W 118°26.5'W 118°25.5'W 118°24.5'W