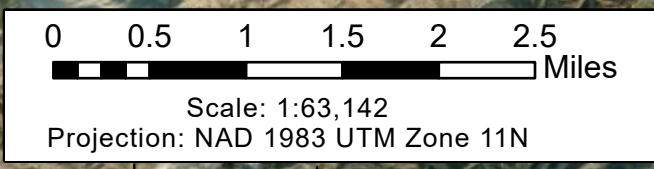
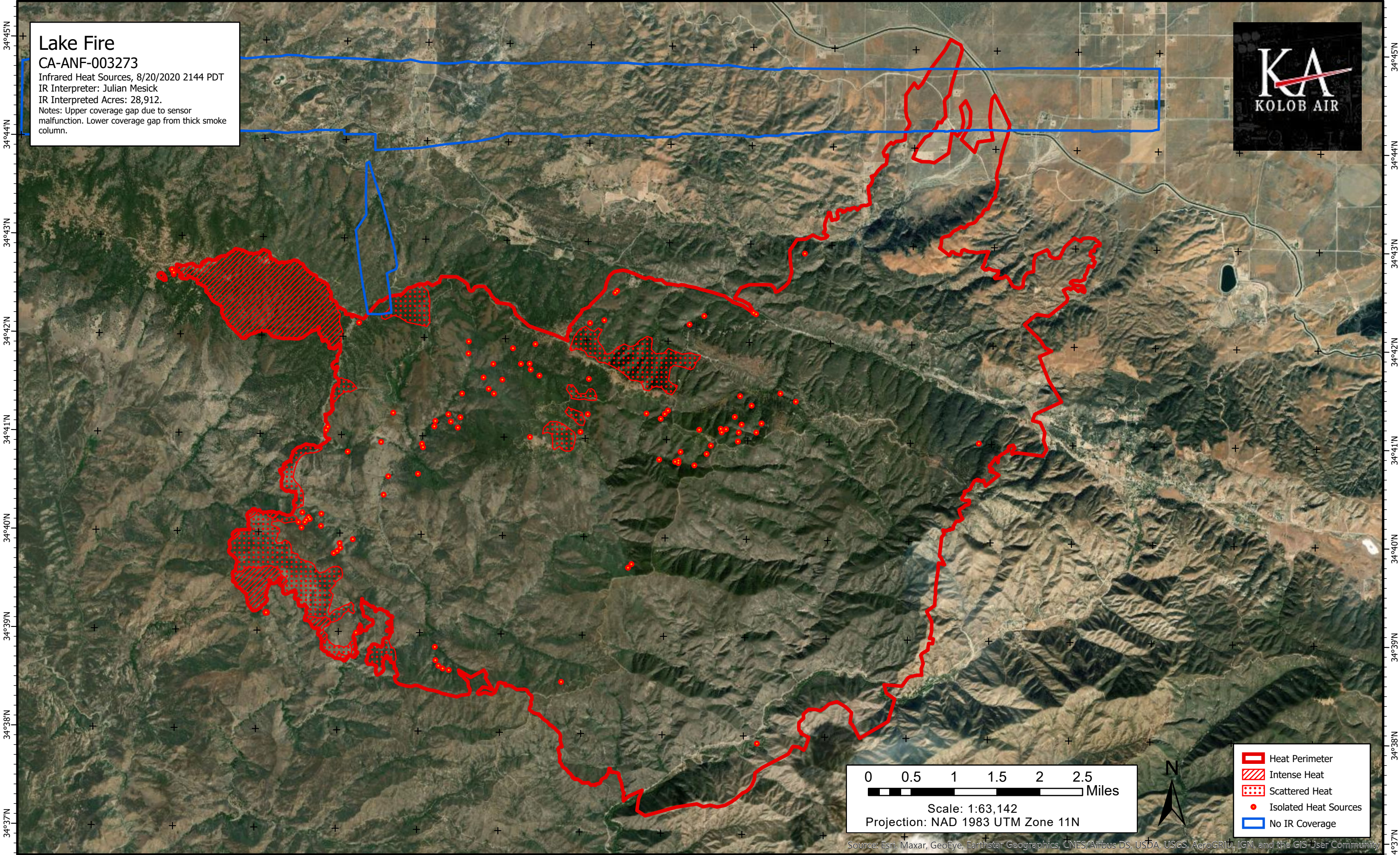



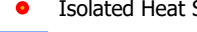
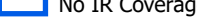


118°41'W 118°40'W 118°39'W 118°38'W 118°37'W 118°36'W 118°35'W 118°34'W 118°33'W 118°32'W 118°31'W 118°30'W 118°29'W 118°28'W 118°27'W 118°26'W 118°25'W

# Lake Fire CA-ANF-003273

Infrared Heat Sources, 8/20/2020 2144 PDT  
IR Interpreter: Julian Mesick  
IR Interpreted Acres: 28,912.  
Notes: Upper coverage gap due to sensor malfunction. Lower coverage gap from thick smoke column.



-  Heat Perimeter
-  Intense Heat
-  Scattered Heat
-  Isolated Heat Sources
-  No IR Coverage

118°40'W 118°39'W 118°38'W 118°37'W 118°36'W 118°35'W 118°34'W 118°33'W 118°32'W 118°31'W 118°30'W 118°29'W 118°28'W 118°27'W 118°26'W 118°25'W

Source: Esri, Maxar, GeoEye, Earthstar Geographics, CNES/Airbus DS, USDA, USGS, AeroGRID, IGN, and the GIS User Community