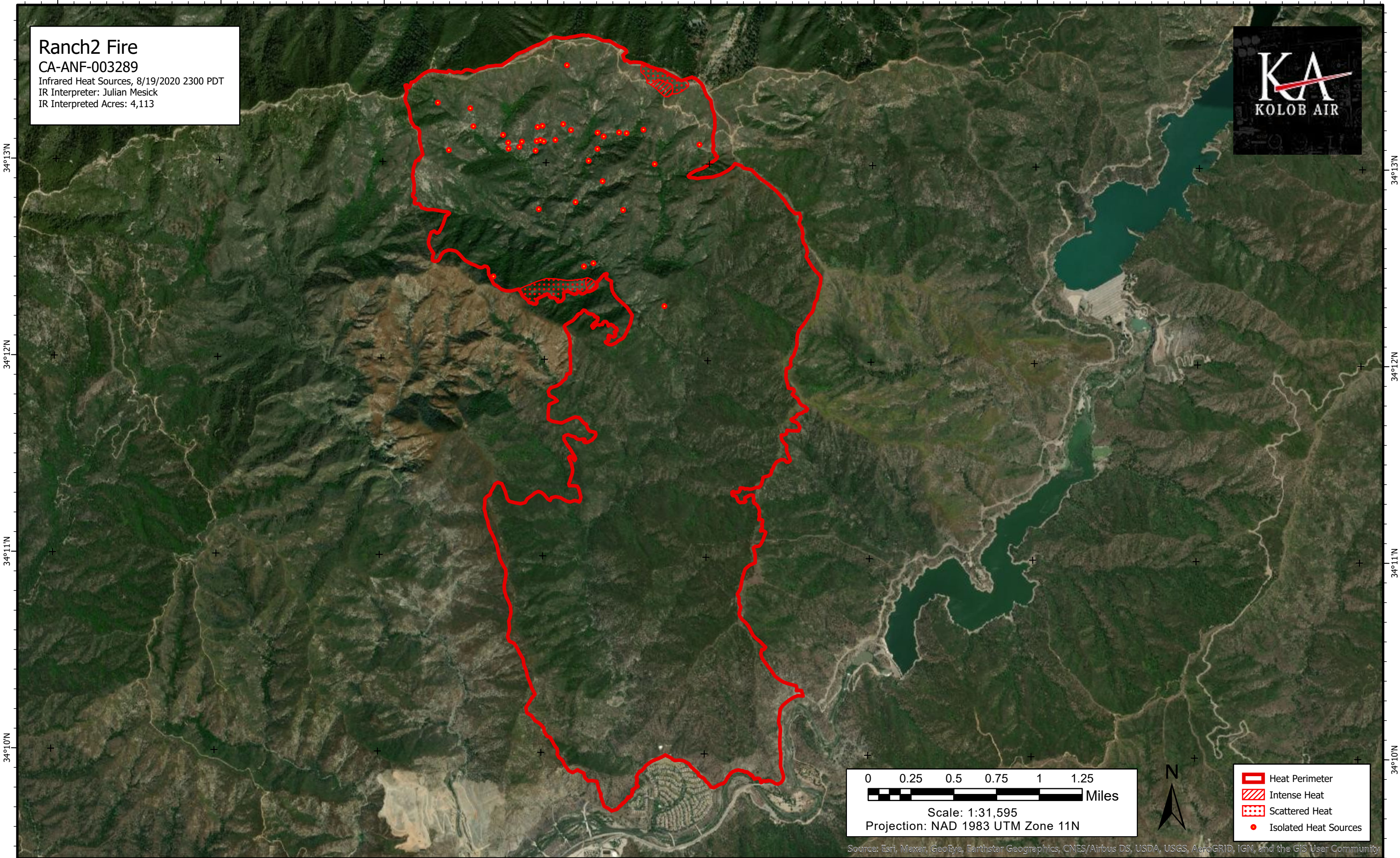


117°58'W 117°57'W 117°56'W 117°55'W 117°54'W 117°53'W 117°52'W 117°51'W 117°50'W

Ranch2 Fire
CA-ANF-003289
Infrared Heat Sources, 8/19/2020 2300 PDT
IR Interpreter: Julian Mesick
IR Interpreted Acres: 4,113



34°13'N

34°12'N

34°11'N

34°10'N

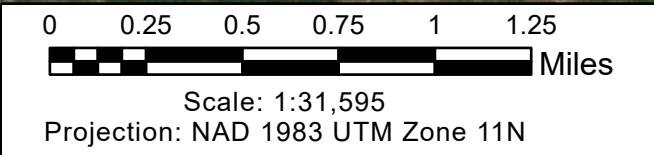
34°13'N

34°12'N

34°11'N

34°10'N

117°58'W 117°57'W 117°56'W 117°55'W 117°54'W 117°53'W 117°52'W 117°51'W 117°50'W



- Heat Perimeter
- Intense Heat
- Scattered Heat
- Isolated Heat Sources

Source: Esri, Maxar, GeoEye, Earthstar Geographics, CNES/Airbus DS, USDA, USGS, AeroGRID, IGN, and the GIS User Community