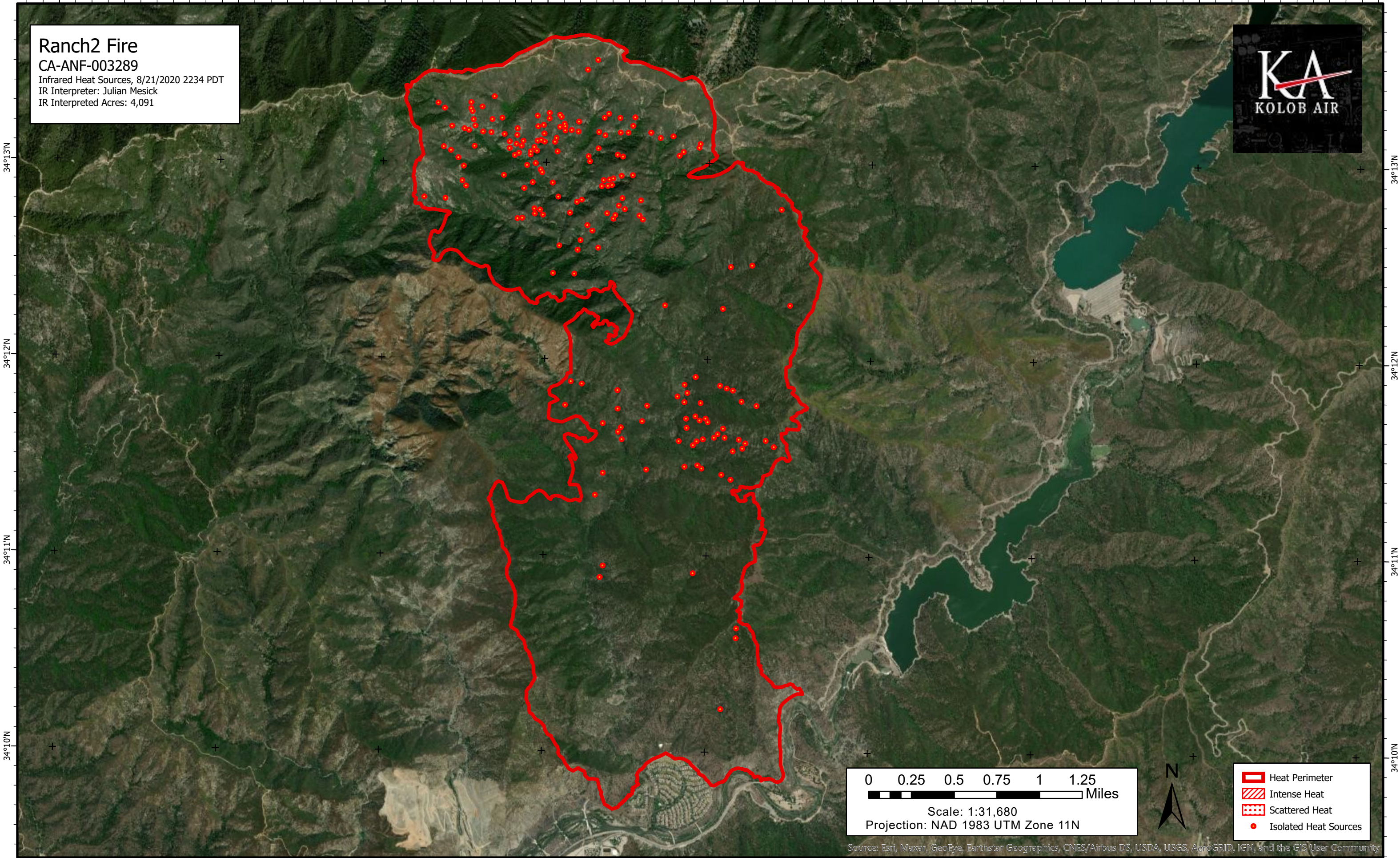


117°58'W 117°57'W 117°56'W 117°55'W 117°54'W 117°53'W 117°52'W 117°51'W 117°50'W

Ranch2 Fire
CA-ANF-003289
Infrared Heat Sources, 8/21/2020 2234 PDT
IR Interpreter: Julian Mesick
IR Interpreted Acres: 4,091



34°13'N

34°12'N

34°11'N

34°10'N

34°13'N

34°12'N

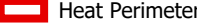



34°11'N

34°10'N

117°58'W 117°57'W 117°56'W 117°55'W 117°54'W 117°53'W 117°52'W 117°51'W 117°50'W

0 0.25 0.5 0.75 1 1.25 Miles
Scale: 1:31,680
Projection: NAD 1983 UTM Zone 11N



-  Heat Perimeter
-  Intense Heat
-  Scattered Heat
-  Isolated Heat Sources

Source: Esri, Maxar, GeoEye, Earthstar Geographics, CNES/Airbus DS, USDA, USGS, AeroGRID, IGN, and the GIS User Community