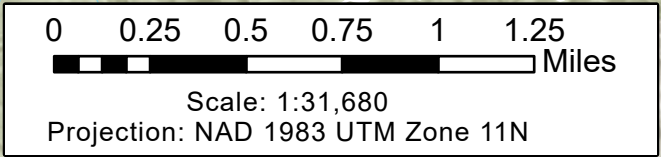
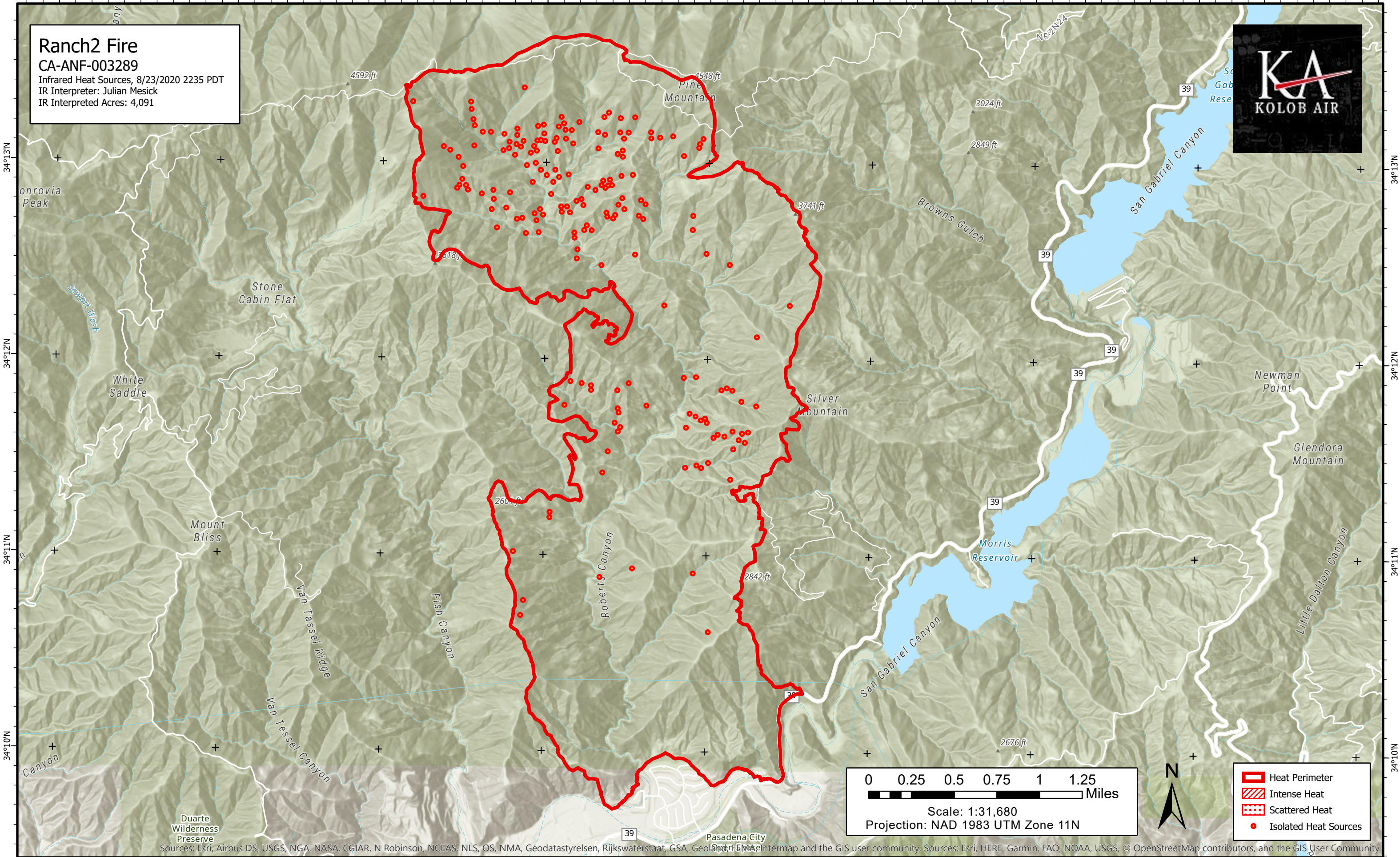


117°58'W 117°57'W 117°56'W 117°55'W 117°54'W 117°53'W 117°52'W 117°51'W 117°50'W

Ranch2 Fire
CA-ANF-003289
Infrared Heat Sources, 8/23/2020 2235 PDT
IR Interpreter: Julian Mesick
IR Interpreted Acres: 4,091



- Heat Perimeter
- Intense Heat
- Scattered Heat
- Isolated Heat Sources

Sources: Esri, Airbus DS, USGS, NGA, NASA, CGIAR, N Robinson, NCEAS, NLS, OS, NMA, Geodastyrelsen, Rijkswaterstaat, GSA, Geoland, FEMA, Intermap and the GIS user community. Sources: Esri, HERE, Garmin, FAO, NOAA, USGS, © OpenStreetMap contributors, and the GIS User Community

117°58'W 117°57'W 117°56'W 117°55'W 117°54'W 117°53'W 117°52'W 117°51'W 117°50'W