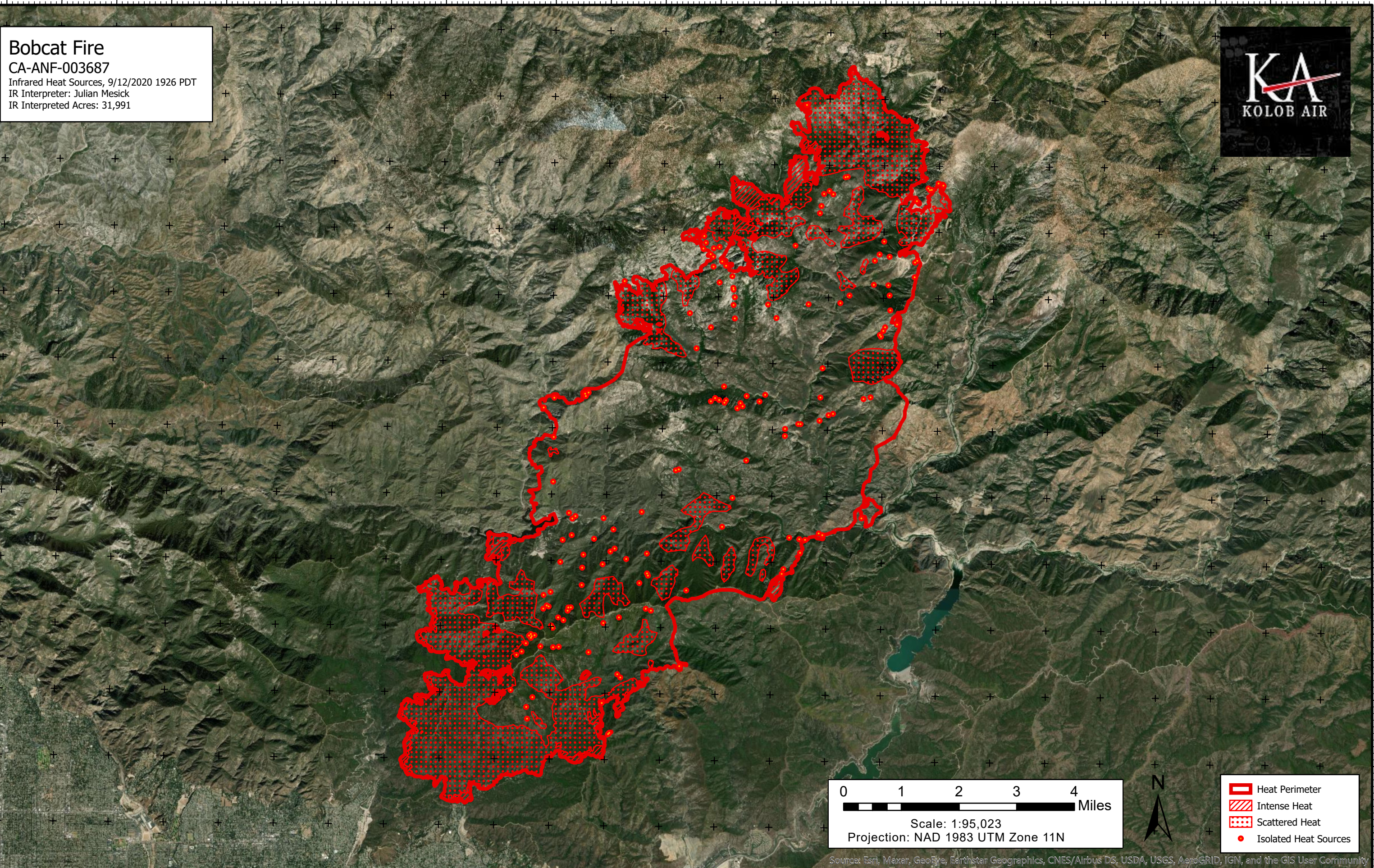
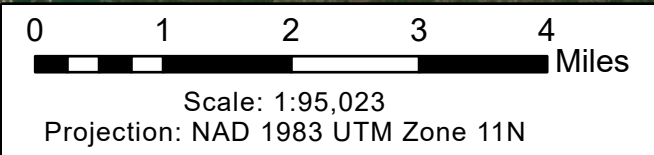


118°8'W 118°7'W 118°6'W 118°5'W 118°4'W 118°3'W 118°2'W 118°1'W 118°W 117°59'W 117°58'W 117°57'W 117°56'W 117°55'W 117°54'W 117°53'W 117°52'W 117°51'W 117°50'W 117°49'W 117°48'W 117°47'W 117°46'W 117°45'W 117°44'W



Bobcat Fire
CA-ANF-003687
Infrared Heat Sources, 9/12/2020 1926 PDT
IR Interpreter: Julian Mesick
IR Interpreted Acres: 31,991



- Heat Perimeter
- Intense Heat
- Scattered Heat
- Isolated Heat Sources

Source: Esri, Maxar, GeoEye, Earthstar Geographics, CNES/Airbus DS, USDA, USGS, AeroGRID, IGN, and the GIS User Community

118°8'W 118°7'W 118°6'W 118°5'W 118°4'W 118°3'W 118°2'W 118°1'W 118°W 117°59'W 117°58'W 117°57'W 117°56'W 117°55'W 117°54'W 117°53'W 117°52'W 117°51'W 117°50'W 117°49'W 117°48'W 117°47'W 117°46'W 117°45'W 117°44'W