

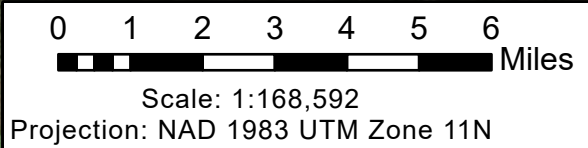
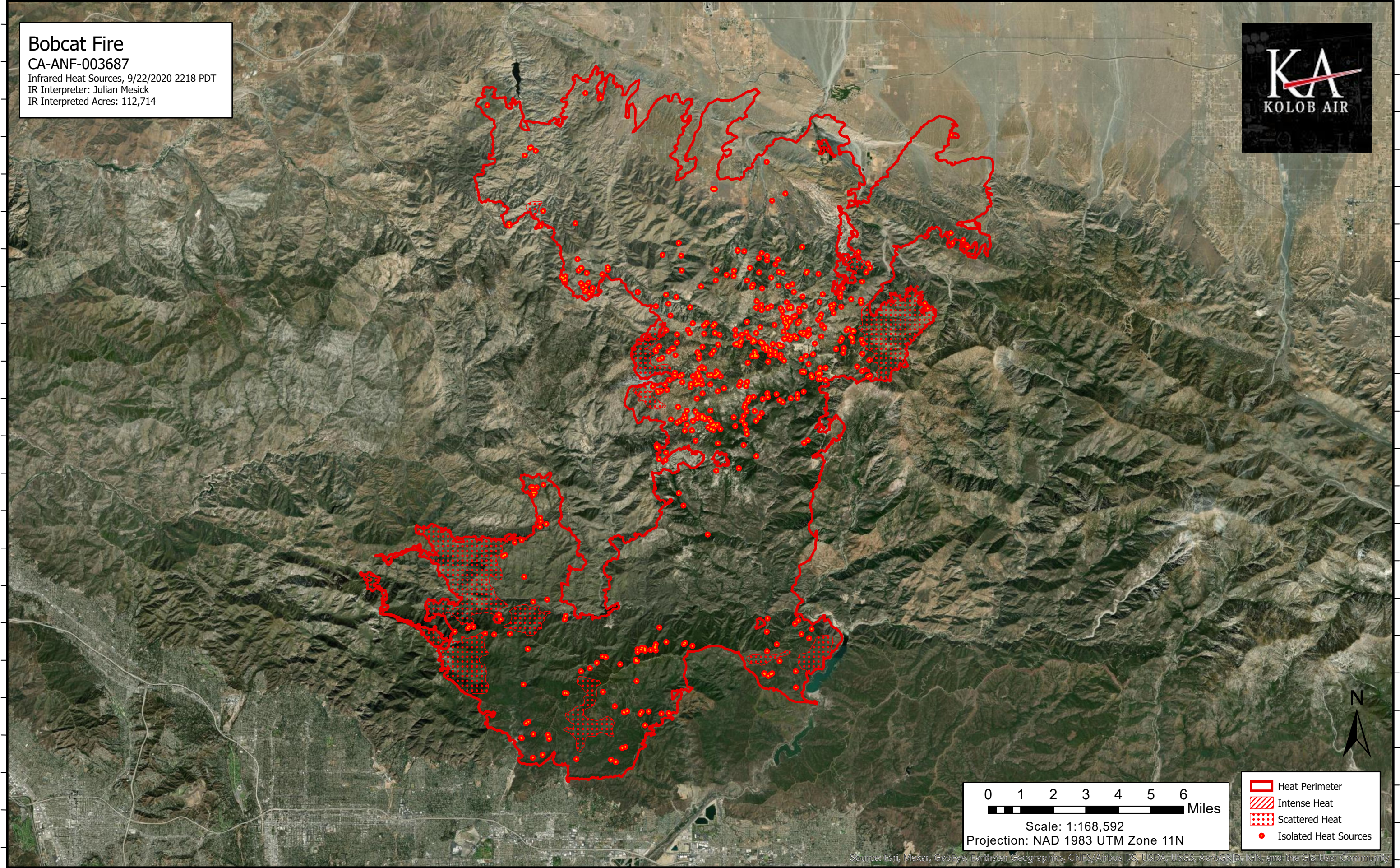
118°16'W 118°14'W 118°12'W 118°10'W 118°8'W 118°6'W 118°4'W 118°2'W 118°W 117°58'W 117°56'W 117°54'W 117°52'W 117°50'W 117°48'W 117°46'W 117°44'W 117°42'W 117°40'W 117°38'W 117°36'W 117°34'W

**Bobcat Fire**  
CA-ANF-003687  
Infrared Heat Sources, 9/22/2020 2218 PDT  
IR Interpreter: Julian Mesick  
IR Interpreted Acres: 112,714



34°30'N  
34°28'N  
34°26'N  
34°24'N  
34°22'N  
34°20'N  
34°18'N  
34°16'N  
34°14'N  
34°12'N  
34°10'N  
34°8'N

34°30'N  
34°28'N  
34°26'N  
34°24'N  
34°22'N  
34°20'N  
34°18'N  
34°16'N  
34°14'N  
34°12'N  
34°10'N  
34°8'N



- Heat Perimeter
- Intense Heat
- Scattered Heat
- Isolated Heat Sources



Source: Esri, Maxar, GeoEye, Earthstar Geographics, CNES/Airbus DS, USDA, USGS, AeroGRID, IGN, and the GIS User Community

118°16'W 118°14'W 118°12'W 118°10'W 118°8'W 118°6'W 118°4'W 118°2'W 118°W 117°58'W 117°56'W 117°54'W 117°52'W 117°50'W 117°48'W 117°46'W 117°44'W 117°42'W 117°40'W 117°38'W 117°36'W 117°34'W