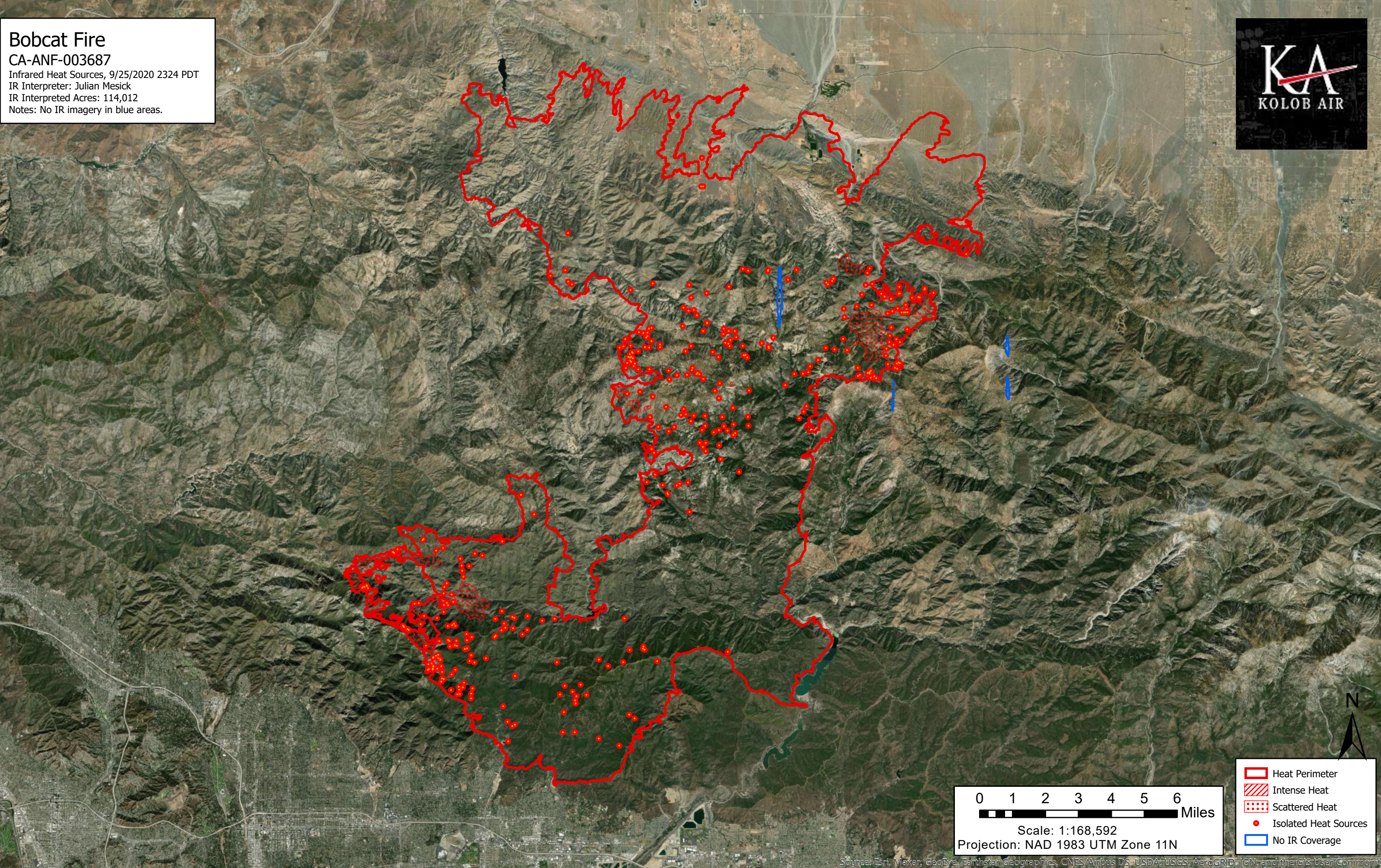
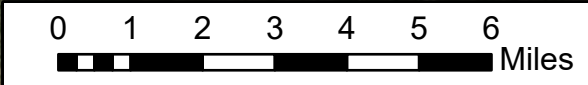


118°16'W 118°14'W 118°12'W 118°10'W 118°8'W 118°6'W 118°4'W 118°2'W 118°W 117°58'W 117°56'W 117°54'W 117°52'W 117°50'W 117°48'W 117°46'W 117°44'W 117°42'W 117°40'W 117°38'W 117°36'W 117°34'W



**Bobcat Fire**  
CA-ANF-003687  
Infrared Heat Sources, 9/25/2020 2324 PDT  
IR Interpreter: Julian Mesick  
IR Interpreted Acres: 114,012  
Notes: No IR imagery in blue areas.



Scale: 1:168,592  
Projection: NAD 1983 UTM Zone 11N

- Heat Perimeter
- Intense Heat
- Scattered Heat
- Isolated Heat Sources
- No IR Coverage



118°16'W 118°14'W 118°12'W 118°10'W 118°8'W 118°6'W 118°4'W 118°2'W 118°W 117°58'W 117°56'W 117°54'W 117°52'W 117°50'W 117°48'W 117°46'W 117°44'W 117°42'W 117°40'W 117°38'W 117°36'W 117°34'W

Source: Esri, Maxar, GeoEye, Earthstar Geographics, CNES/Airbus DS, USDA, USGS, AeroGRID, IGN, and the GIS User Community